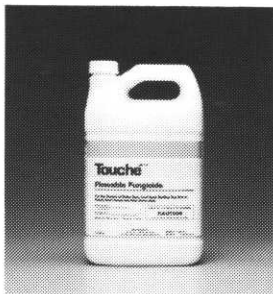


# LESCO™

## LEADERS IN TURF FUNGICIDES

- **Touché™** provides long lasting control of many major turf diseases including leaf spot, dollar spot and brown patch.
- **LESCO** offers a wide range of products for turf and ornamental disease control. Available in sprayable, granular and fertilizer combination options.



**(800) 321-5325 • Fax (800) 673-3030**

LESCO and Touché are trademarks of LESCO, Inc.

# MTGF UPDATE

By Patrick A. Walton, CGCS  
*Rolling Green Country Club*

The MTGF held Board Meetings on February 17 and March 18 at North Star Turf Supply. The MTGF Executive Director Search Committee has offered the Executive Director position to the top candidate and awaits an answer. The MTGF Executive Director position will be a 50% job share position with the University of Minnesota.

**Hillcrest CC's Mike Brower** is the MGCSA director who serves on the MTGF Conference Committee. The 1998 MTGF Conference and Show will be held December 9, 10 and 11 at the Minneapolis Convention Center. Mike is working hard to ensure that the MTGF Conference continues to be a strong turf conference.

If you have any feelings to share on how the MTGF Conference and Show can or should improve, contact Mike Brower at (612) 777-7463 or myself, Pat Walton, at (612) 478-2179. The cost of the conference and show for vendors and attendees will remain the same as this past year.

**The Annual MTGF Golf Tournament will be held July 27th at Elk River Country Club.** Please try and participate in this tournament. It is a good opportunity to meet fellow professionals in the turf and grounds industry.

**The MTGF, MGA and the University of Minnesota** will be meeting on March 20 to reorganize the direction of the Rosemount Project.

## QUALITY SUPPLIER OF TURF

- **Washed** and Regular Turf (Sod) in 1½ yd. or up to 55 yd. Big Roll Size (42" Wide)

### TURF TYPES:

- ELITE KENTUCKY BLUEGRASS BLEND
- SPORTS TURF  
BLUEGRASS/P. RYEGRASS BLEND  
BENTGRASS



### MEMBER

NCTGA	MGCSA
MSTMA	WTA
SDGSA	ISTMA
MTGF	TPI

For Quality Turf Contact:  
**(612) 674-7937 • FAX: (612) 674-7044**

**8651 Naples St. N.E.  
Blaine, MN 55449**

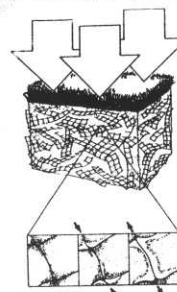
## QUALITY CONSTRUCTION & RECONSTRUCTION

- **Golf Courses**
- **Sports Fields**



### NETLON® ADVANCED TURF SYSTEMS

Self-Cultivating means healthier turf and better drainage.



### NETLON® MESH ELEMENTS AND MIXES

*For Compaction Resistance on cart paths, sports fields and other high use areas.*

For Quality Construction & Nelton® Products Contact:  
**(612) 784-0657 • FAX: (612) 784-6001**