

## No More Bouncing Around: Service Center Answers Your Questions

Beginning July 31, when you call GCSAA you'll receive an even higher level of customer service. GCSAA's service center will be open to meet as many of your member needs as possible with one phone call.

Let's say you want to change your address, check your membership status, subscribe to the Employment Referral Service (ERS) and get an information packet. No longer will you be bounced from the membership department to the career development department to information services. You'll be able to gather all this information and sign up for these services with just one phone call to one service center representative.

GCSAA recognizes that your time is valuable, and the goal of the service center is to keep you on course, so you can get back to business.



*Specializing in*  
**Re-Design & Construction  
of Golf Courses**

### MAIN OFFICE

2 South 2nd Avenue — Suite 120  
Sauk Rapids, MN 56379

(320) 203-8451

MINNESOTA: 800-630-9298

FAX: (320) 253-4160

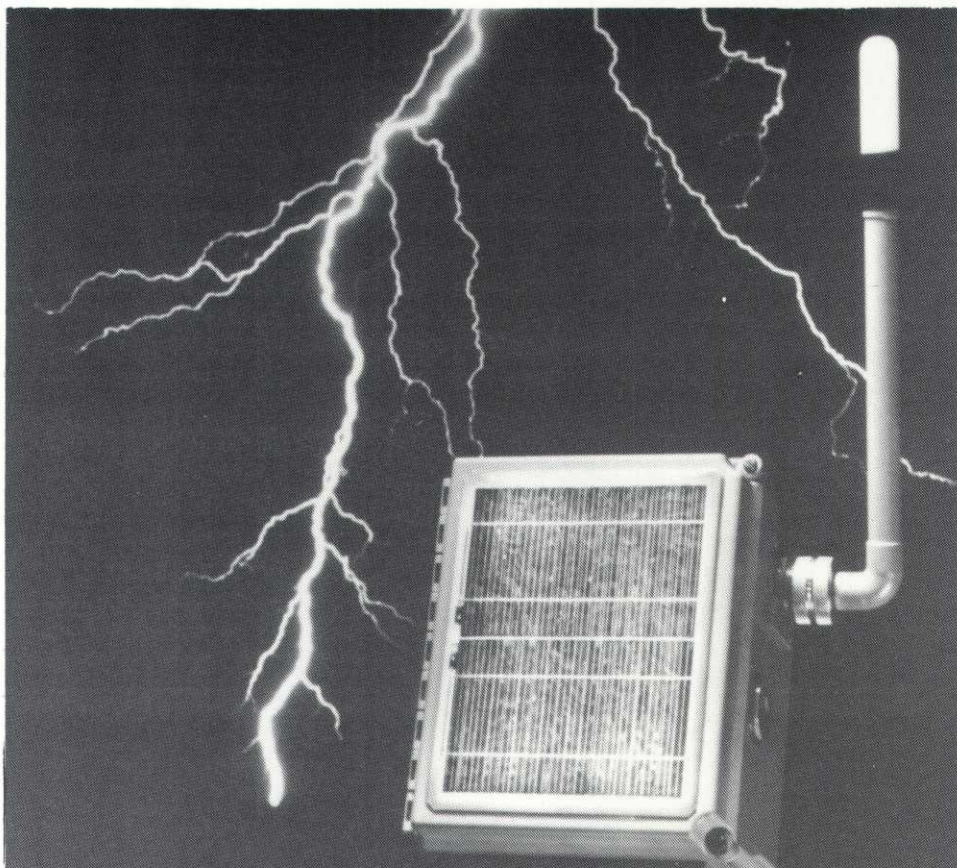
### ELK RIVER OFFICE

817 Gates Ave., Elk River, MN 55330

(612) 441-5127

# ESID

ELECTRICAL STORM IDENTIFICATION DEVICE



Early warning of thunderstorm activity in your area is essential when you need to make critical decisions regarding personnel safety and the isolation of sensitive equipment. The **USGA, PGA**, and over 500 individual golf courses rely on **Global Atmospherics Inc.**, manufacturer of **ESID**.

**Renowned organizations such as NASA, Seaworld, the National Weather Service, the U.S. Military, American Airlines, MCI** and hundreds of customers in over 30 countries worldwide have chosen **Global Atmospherics** to meet their lightning warning, detection and information needs. This depth of experience is just one of the reasons that led **TORO**, the leading turf management organization in the world and **QPS**, manufacturer of the #1 golf course siren system, **COURSE ALERT**, to select **Global Atmospherics** to co-develop a product to meet the unique needs of their golfing customers, friends and associates.

That product is **ESID**

When you need...

- **100% Thunderstorm Detection Efficiency**
- **Complete Warning / System Shut-down Automation**
- **Zero False Alarms**
- **Highly Accurate Range Information**
- **Easy Installation**
- **Low Maintenance**
- **Patented State of the Art Technology**

...and the **confidence** of teaming up with the **World Leader** in lightning detection and location.

**MTI** DISTRIBUTING CO. **TORO**

Contact: **Dean Chaltas** at **612-475-2200** ext. 224

14900 - 21st Avenue North, Plymouth, MN 55447