

ON THE FOURTH TEE
at The Preserve is Head
Golf Course Superintendent
Mike Bohnenstingl.

'Sneak Preview' Provides An Early Peek At The Preserve In Brainerd Lakes Area

For the month of September and possibly a few days in October, the highly-touted Preserve golf course will present a one-month "sneak preview" of its picturesque 18 holes on a limited basis.

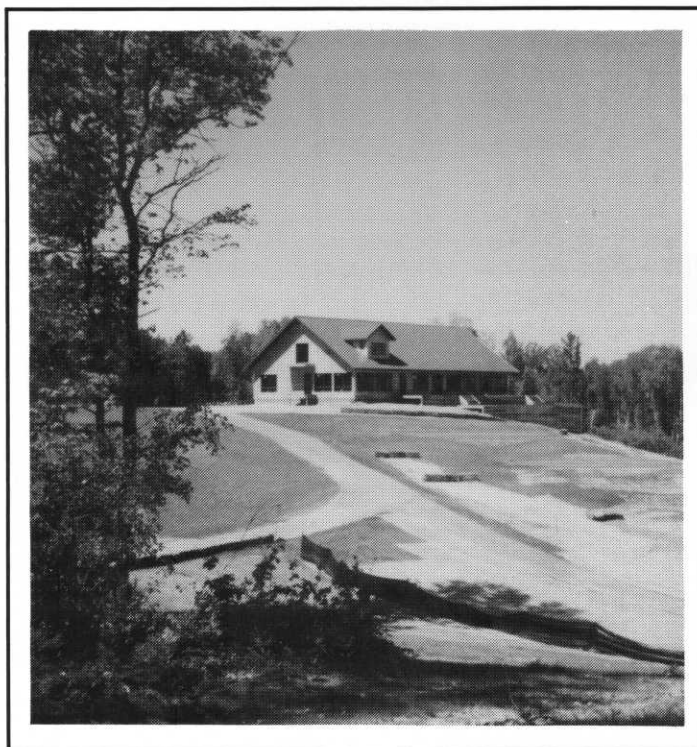
For Mark Bohnenstingl, newly-appointed head golf course superintendent, it's an excellent time to see how golfers react to The Preserve, even though there's still work to be done on the course and inside the clubhouse.

"This will provide a great opportunity to check out what remains to be done and also to review the positive results of what already has been accomplished," said Bohnenstingl, most recently assistant superintendent at Minnesota Valley Country Club before accepting the head position at The Preserve earlier this summer.

Under construction for the past two years, The Preserve is located five miles north of downtown Nisswa and two miles south of Pequot Lakes in Sibley Township. Visitors should go seven-tenths of a mile east of Highway 371 on County Road 107 and watch for The Preserve's entrance on the left.

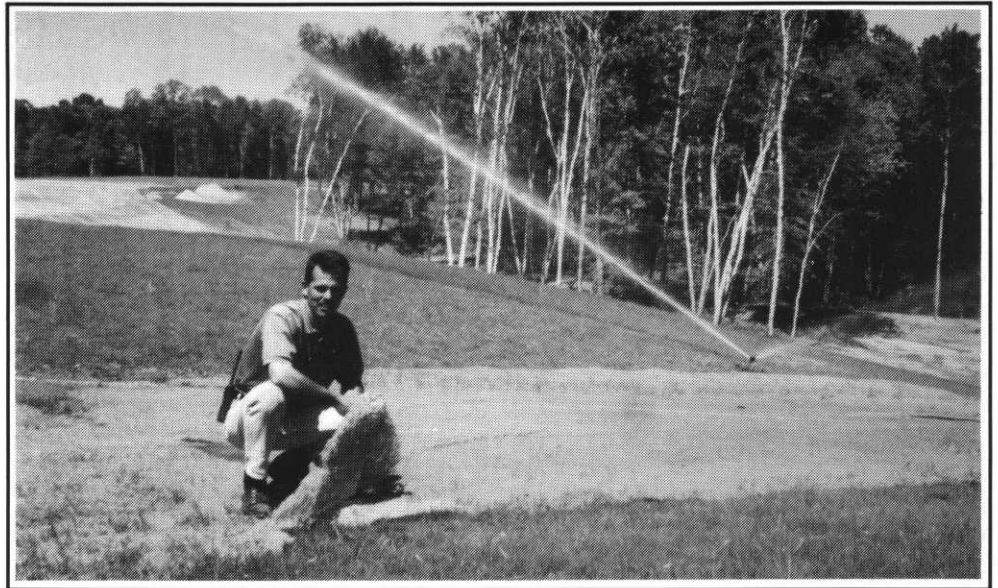
Majority ownership was purchased by Grand View Lodge this past spring from Dan Helbling, who has been retained as a consultant. The Nisswa resort now has a total of 54 holes, including the new 18 at The Preserve, 27 more at The Pines and nine at the original Garden Course at Gull Lake.

(Continued on Page 8)



THE NEW CLUBHOUSE at The Preserve is framed in and scheduled to be completed during the forthcoming winter.

**DISPLAYING
A SLICE
OF FUTERRA**
which was used
to control erosion
after heavy rainfalls
earlier this year,
is Superintendent
Mike Bohnenstingl.



**THIS
“BEFORE”
PHOTO**
shows the
placement
of the
Futerra
at the
18th green.

**THIS
“AFTER”
PHOTO**
shows how
the grass
took hold
after a couple
of weeks.





AN APPEALING BALANCE of pine and deciduous trees borders The Preserve's fairways, which weave their way around water and marshes.

The Preserve—

(Continued from Page 8)

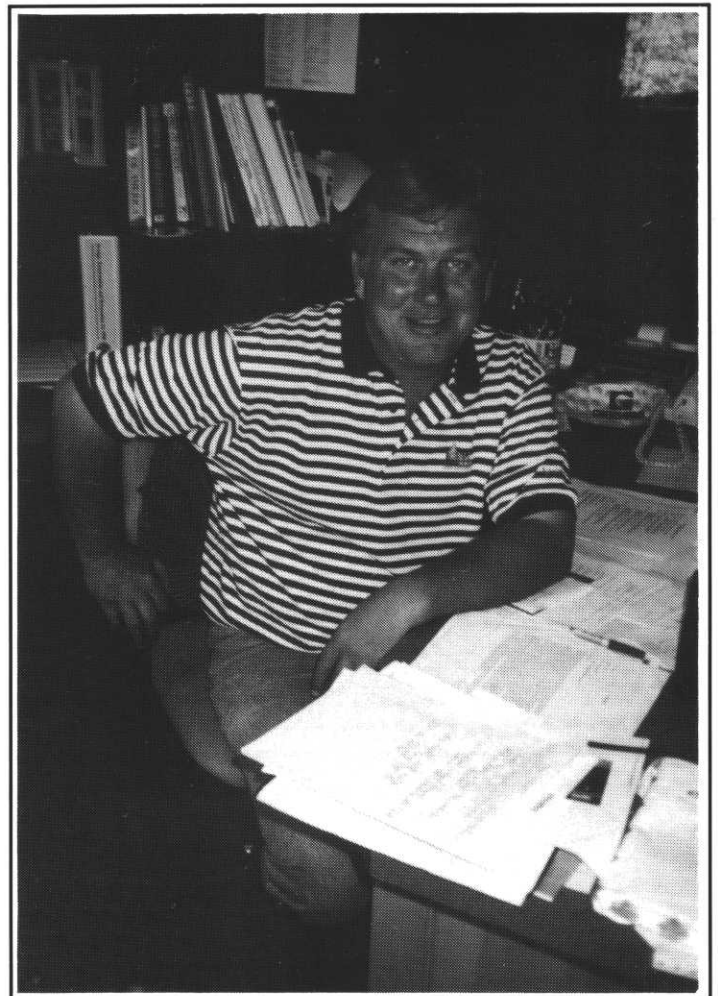
The new par 72 course, offering several spectacular vistas, has a balanced network of woods, water and marsh on its rolling terrain. In many ways its beauty reminds golfers of The Pines at Grand View Lodge, yet it definitely has its own appealing character. With four tees on each hole, the course plays anywhere from 5,100 to 6,800 yards, thus making it enjoyable for newcomers but also challenging for championship golfers from the back tees.

“Play during the preview month of September will be on a limited basis for the lucky golfers who obtain tee times,” said Tom Kientzle, CGCS, Grand View’s director of golf. Tee times may be obtained by calling 218/963-3146 or 88-THE-PINES.

Soft spikes will be required to golf at The Preserve. Players are urged to have them on when they get to the course, but pro shop personnel will help as much as possible to make changes.

“Play at The Pines has mushroomed over the past few years, and we needed more facilities to accommodate golfers who want to play excellent golf courses in this area,” said Mark Ronnei. “In addition, we will be extending our promotion of Grand View Lodge and our golf courses in such areas as Texas, Oklahoma and other southern states. We are most fortunate in so many ways that The Preserve complements our facilities at The Pines so well, truly making Grand View Lodge an attractive golf destination at a family resort.”

“Green fees this year will be only \$25 for 18 holes and \$10 per person for a cart,” said Kientzle. “The new clubhouse will have much to offer when it is completed this winter, but the course itself is ready for play, although we have several final touches to complete.”



“THE PRESERVE COMPLEMENTS The Pines at Grand View Lodge well,” says Tom Kientzle, CGCS, director of golf for the resort’s 54 holes.

The Preserve—

(Continued from Page 10)

Although the clubhouse has not been completed, space has been developed to serve the golfing public, according to Mark Neva, Grand View's head golf professional at The Pines. Assistant professionals Eric Petersons and Chuck Klecatsky are scheduled to oversee that operation when it begins.

"We're excited about the flexibility The Preserve provides," said Neva. "Even since The Pines expanded to 27 holes, there has been considerable pressure for tee times and The Preserve will help considerably in this respect. Besides, it also is a great golf course and offers even more variety for area golfers as well as guests at Grand View Lodge."

For Bohnenstingl, the opportunity to come to The Preserve was most appealing.

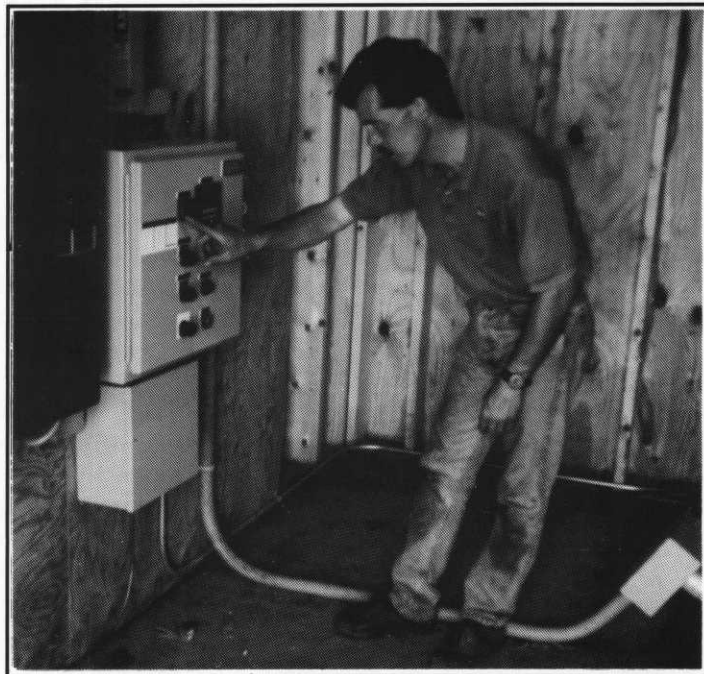
"It's been a pleasure to be involved in helping out on the development of a new golf course, and furthermore, it's almost like coming home," he said. "I went to college at Bemidji and also had a great experience as an assistant at Madden's at Gull Lake. My wife Becky also was an employee at Madden's and now we've bought a home in Nisswa, and my brother Chad is an assistant superintendent at Ruttgers at Bay Lake. Besides, The Preserve is a fantastic course and obviously should even get better as it matures."

A 1980 graduate of Wheaton (Minn.) High School, Bohnenstingl earned his bachelor of science degree in industrial psychology at Bemidji State in 1984. From 1989-91

he enhanced his turf management knowledge by taking several technical courses at Anoka Technical College.

From 1981-91, he was employed on the summer maintenance staff of Madden's where he was promoted to assistant superintendent at Minnesota Valley.

Becky served as catering director at Golden Valley Country Club before moving to Nisswa.



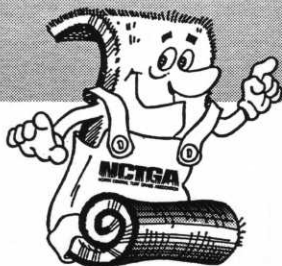
CHECKING variable frequency drive pumping system at The Preserve is Superintendent Bohnenstingl.

QUALITY SUPPLIER OF TURF

- Washed and Regular Turf (Sod) in 1 1/2 yd. or up to 55 yd. Big Roll Size (42" Wide)

TURF TYPES:

- ELITE KENTUCKY BLUEGRASS BLEND
- SPORTS TURF
BLUEGRASS/P. RYEGRASS BLEND
BENTGRASS



MEMBER

NCTGA	MGCSA
MSTMA	WTA
SDGSA	ISTMA
MTGF	TPI

For Quality Turf Contact:
(612) 674-7937 • FAX: (612) 674-7044

**8651 Naples St. N.E.
Blaine, MN 55449**

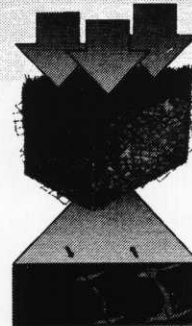
QUALITY CONSTRUCTION & RECONSTRUCTION

- Golf Courses
- Sports Fields



NETLON® ADVANCED TURF SYSTEMS

Self-Cultivating means healthier turf and better drainage.



NETLON® MESH ELEMENTS AND MIXES

For Compaction Resistance on cart paths, sports fields and other high use areas.

For Quality Construction & Nelon® Products Contact:
(612) 784-0657 • FAX: (612) 784-6001