

# HOLE

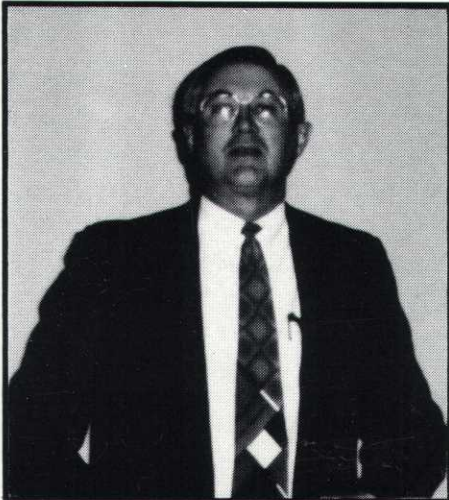


# NOTES

**VOL. 27, NO. 2**

AFFILIATED WITH THE GOLF COURSE SUPERINTENDENTS ASSOCIATION OF AMERICA

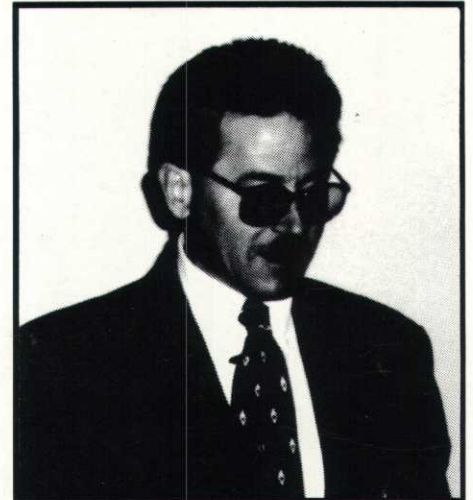
**APRIL 1996**



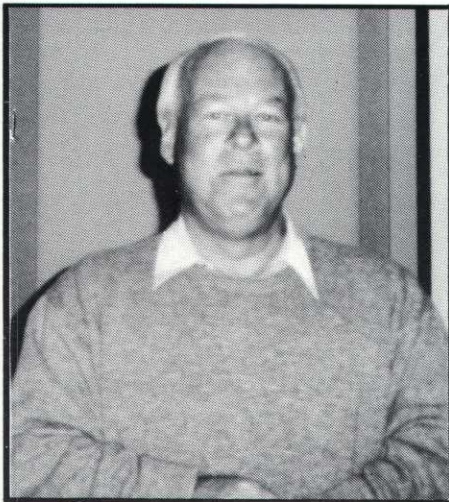
**DR. PHIL LARSON**  
University of Minnesota



**ROSS GALARNEAULT**  
Minnesota Golf Association



**TOMMY D. WITT, CGCS**  
GCSAA Representative



**DON WOHLNHAUS**  
Center for Personal Development



**VIC OSTEEN**  
Growth Seminars



**ROBERT C. VAVREK**  
USGA Agronomist

*These Six Speakers Helped Make The  
March Mini-Seminar a Super Success*

**SECOND CLASS MAIL  
PLEASE DELIVER PROMPTLY**