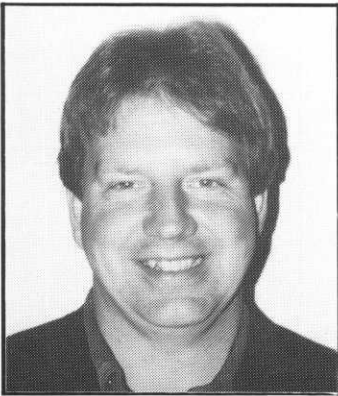
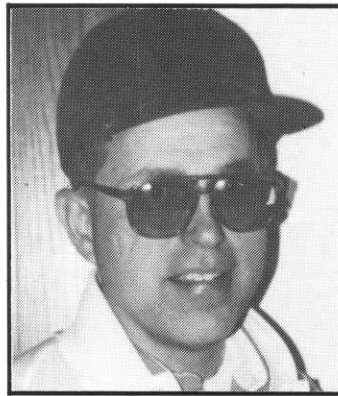


## What Is Your Favorite Part About Spring?



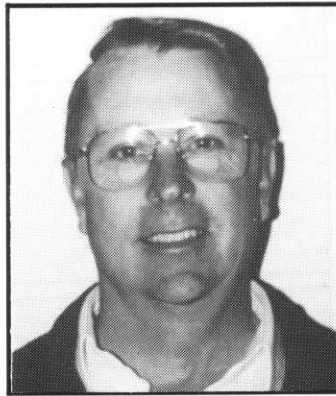
**PAUL MAYES**  
The Links at Northfork

"My favorite part of Spring is getting out of my office and onto the golf course. I love watching the turf coming out of dormancy and the buds appearing on the trees. Spring-time also gives me a chance to see our wildlife come out of their protector from winter and move around the golf course."



**DICK KOLTER**  
Westfield Golf Club

"The one thing that I like the most about Spring is the additional daylight the season brings. On the golf course, I am always happy to see that all the grass has come through the winter undamaged and the irrigation system does not have any leaks."



**JOHN QUEENSLAND**  
Cedar River Country Club

"I like putting out freshly painted benches and ballwashers etc. First cutting of grass also smells so good... seeing members coming back to golf after a long winter... starting up new equipment... turning water systems on... seeing greens coming out of snow."



**BUTCH GREENINGER**  
MTI Distributing Co.

"The fact that it feels like a new beginning and everyone that I deal with is upbeat and looking forward to the coming season and its new challenges that are sure to surface for all of us in the industry."

### MEMBERSHIP REPORT

APRIL 13, 1992  
LAKE CITY GOLF CLUB

#### NEW MEMBERS—APRIL 13, 1992

Name	Club	Class
Todd Carlson	Northland Country Club	BII
Kyle Howieson	Cimarron Park & G.C.	B
John Ewens	Esquaguma C.C.	C
Scott Held	The Pines	C
Dick Lemmerhirt	Pumpco of Mn.	F
Peter Loyd	Golf Course Services	F
Damon Morgan	Edgewater G.C. & Restaurant	B
Joe Nelson	Enviro Mn. Inc.	F
Richard Randall	Hiawatha G.C.	A
Gerald Sunde	Sunde Engineering Inc.	F
Leroy Wurm	Albion Ridges G.C.	D
Chris Youngbauer	Pine River G.C.	BII
Todd Zemke	Burl Oaks G.C.	D

#### RECLASSIFICATIONS—APRIL 13, 1992

Name	Club	Class
David Burhop	Bracketts Crossing C.C.	BII to B
Tom Johanns	Bemidji Town & C.C.	BII to B
Greg Iden	Shoreland C.C.	B to A
Steve Spaulding	Elm Creek Golf Links	C to BII
David Wood	St. Cloud C.C.	D to BII
Jeffrey Youngbauer	Montevideo C.C.	C to BII
Darren Armstrong	Macalgrove C.C.	BII to B

*Mike Olson, Membership Chairman*

### SCHOLARSHIP APPLICATIONS

MUST BE RETURNED TO THE MGCSA  
OFFICE BY JULY 1, 1992

APPLICATIONS MAY BE OBTAINED BY  
CALLING THE BUSINESS OFFICE AT:

**(612) 473-0557**

# LESCO

Has it! Everything you need for  
professional turf management.

- Fertilizers •Control Products •Seed
- Irrigation •Equipment •Replacement Parts •Golf Course Accessories •Safety Products
- Service Brochures • Low Voltage Lighting

**(800) 321-5325**

**Your Growth Partner**

LESCO, Inc., 20005 Lake Rd., Rocky River, Ohio 44116