

The Winter of 1991-92

* * *

The Final Word . . . Hopefully

Spring has arrived, the turf is starting to grow and we are seeing some unsettling sights. Reports are coming in from all over the state, of tan turf, where there should be green. What caused the tan patches? I'll leave the official explanation up to the experts; on my golf course I have seen where the ice just sat a little too long, some crown hydration, maybe even some low temperature kill. Superintendents throughout the state are starting to put to use their collective talents and skills to bring back to life putting surfaces that are scarred, fairways that are barren and tees that have no turf to be seen anywhere.



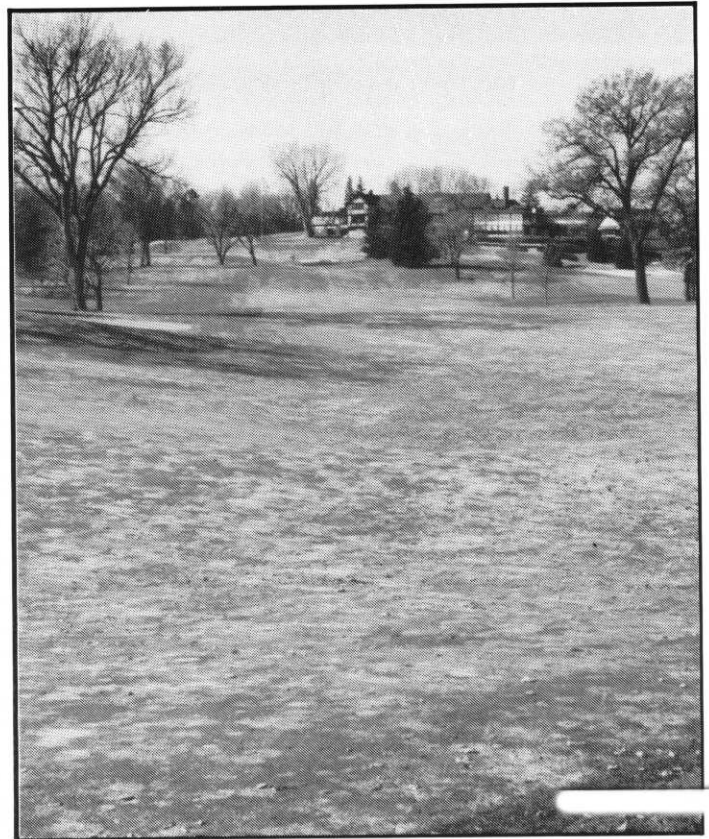
Nothing was applied at the sod nursery at Braemar G.C.



FARIBAULT GOLF & COUNTRY CLUB
Freezing rain caused damage to Amur Maple Trees.



BRAEMAR GOLF COURSE
Plant protectants applied to the right and left of this slice.



INTERLACHEN COUNTRY CLUB
Due to snow cover plant protectants could not be applied.

Introducing The Perfect Bag For Greens And Tees.



For overseeding low cut areas and establishing greens and tees, no other fertilizer provides the kind of coverage and nutrient distribution that Country Club 10-18-18 does.

Country Club
10-18-18 

Paul Olson
Territory Account Manager
Roseville, MN (612) 483-4782