

Cankers on Trees:

(Continued from Page 16)

rapidly. Some fungi break through the host's defenses every year to form perennial cankers (Fig. 1). A few fungi are capable of invading healthy trees and killing them. An example is chestnut blight. The fungus responsible, *Endothia parasitica*, decimated American chestnut trees earli-

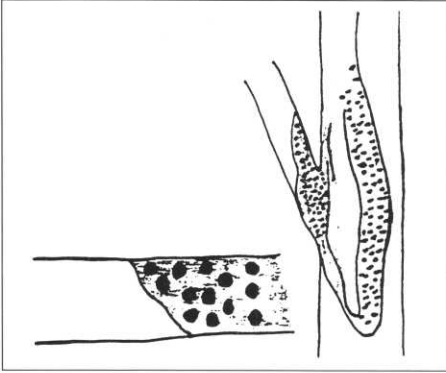


Fig. 2. Closeup of twig with fruiting bodies.

er this century.

CONTROL

Most canker-causing fungi attack stressed or injured trees. Therefore, the

best treatment for cankers is PREVENTION. Keep trees healthy and prevent wounds. In winter, wrap thin-barked trees such as maple and apply to prevent sunscald and frost cracks. In periods of low rainfall, water valuable trees thoroughly once per week, twice per week on sandy soils. Do not plant trees too close together. As trees mature, overcrowding causes stress due to increased competition for water and nutrients. Proper fertilization and removal of dead wood is also helpful.

Remove branches with expanding cankers caused by fungi and bacteria several inches below the canker. Prune during dry weather to minimize spread and disinfect pruning equipment between each cut (a 9 parts water to 1 part household bleach works well).

FOR SALE

1988 Jacobson F-133 • 5-gang,
6-knife mower. Approx. 600 hours.
Good condition. BEST OFFER.

Tom Dawson 333-3487



Specializing in
**Re-Design & Construction
of Golf Courses**

*Consultants
Project Management*

Contact:
Gerald "Gary" Rohling

817 Gates Avenue
Elk River, MN 55330

(612) 441-5127
Fax (612) 441-3851

TURF SUPPLY COMPANY

2797 Eagandale Blvd.

Eagan, MN 55121

**"ANAEROBIC" SOIL CONDITIONS
HAVE YOU STANDING
ON DRY GROUND**

Our complete line of ADJUVANT PRODUCTS
Will PENETRATE your problem

TURF SUPPLY COMPANY
*The most complete source of WETTING AGENTS
for your Course.*

(612) 454-3106 --- 1-800-551-4857

TARTAN PARK: A Brief History

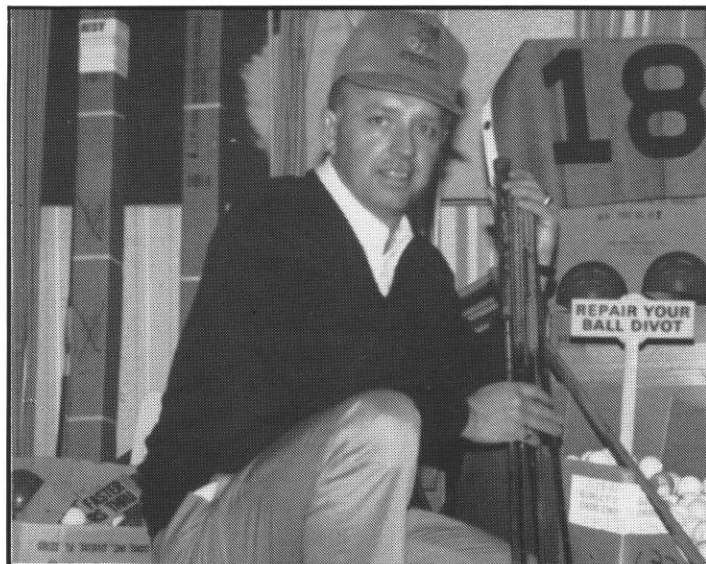
When many people who are not familiar with 3M or Tartan Park think of either, they think of "Scotch" tape and a 27 hole golf course. Like 3M, Tartan Park is a multi-faceted complex that is operated by a staff of trained professionals.

The property that makes up Tartan Park Recreation Area consists of 483 acres and is located adjacent to Lake Elmo in Washington County. The land at Tartan Park was acquired in 1959, with the golf course opening in 1966, and the clubhouse opening in 1968. The recreational outings at the park are part of the 3M Club of St. Paul, Inc. The professional staff at Tartan Park is responsible for the administration of the 3M Club and the facilities.

There is much more to Tartan Park than the well manicured 27 hole golf course, there are the 12 tennis courts, 4 lighted and fenced softball fields, 4 bocce ball courts and the Hexagon Picnic shelters. When winter arrives the staff prepares cross country ski trails and snowmobile trails. The two large picnic areas feature anything to make a family picnic a perfect summer family event keeping everyone entertained from the smallest toddler to the retired 3M'er who would like to get in a quick game of horseshoes. Of course no recreational facility is complete without a center of operations, Tartan Park's clubhouse is well supplied with dining areas, conference rooms, sport shop and meeting rooms.

The idea behind the 3M Club is to provide members with constructive outlets for their recreational, hobby and cultural interests. In addition to the recreational advantages that the Club offers to employees, there is also the strong bond of fellowship which flourishes when people share mutual interests.

Compiled from information provided by 3M Club of St. Paul, Inc.



Joe Moris

FOR SALE

1988 Lesco 500 Fairway Mower
Fully Operational

Best offer

200-gallon 1982 Wanner Sprayer
Stainless Tank, Trailer Model

Best offer

Contact:

**Doug at Minikahda Club
926-4167**



Distributors for these professional products for turf, aquatics & ornamentals—

Applied Biochemists • Cutrine
Brayton • Blended & Homogenous Fertilizer
Clearys • 3336, PMAS, Spotrete
Dupont • Tersan 1991, Tupersan, Manzate 200
Gordons • Trimec, Betasan, Tri-Mec Bent
ICI • Gro Safe
Mobay • Oftanol, Bayleton, Dyrene, Tempo
Noram • Nitroform, Banol, Prograss, Nutralene
Harris labs • Soil • Water Testing
HPI • Evergreen Covers
Sustane - Natural Organic Fertilizer
Brandt • Turf Mix • Turf Mix Plus • Chelated Minors
Ciba-Geigy • Subdue, Banner, Pace, Exhibit
Sprint 330

For more information, contact...

LARRY THORNTON
612/723-0151 or
1-800-642-2736



DowElanco • Turflon, Dursban, Gallery, Confront
Balan, Surflan, Rubigan, Team, Broadway
Hoechst • Acclaim
Grace-Sierra • Vorlan, Duosan, Calo-Clor, Hydraflo,
Once, Peters
Monsanto • Roundup, Dimension
Rhone Poulenc • Chipco 26019, Ronstar, Sevin, Alliette WDG
Fermenta • Daconil, Dacthal
Wilbur Ellis • Bivert • R-11, Trifol, Defommer
Riverdale • Triamine, Jet Spray, Dissolve, Triplet
Price Lawn • Spreaders
Becker Underwood • Spray Dyes • Turf Mark
Van DeHave (Advanta) - Grass Seed
BASF • Vantage, Curalan DF, Basagran, Drive

Wilbur-Ellis Co.
800-642-2736