

THE WOODHILL JANUARY SPORTS OUTING



FOREARM SHIVER- The inimitable Taj Mahal delivers a frosty return of serve.



LIFE ON THE EDGE- Kevin Clunis tries to sneak in through the tradesmen's entrance.



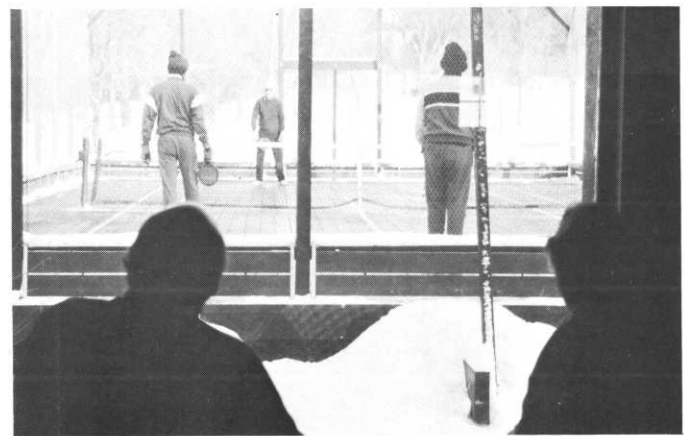
SWISS CHEESE ALA WYSOCKI- We had to put Dale in the nets. He had all the equipment.



GETTING DOWN TO BUSINESS- All you need to know about Employees Right To Eat Law.



IS THERE A DOCTOR IN THE HOUSE?- "I'd rather face my green committee than go through this again."



LUXURY BOXES- Perfect for entertaining clients who are already in the bag.