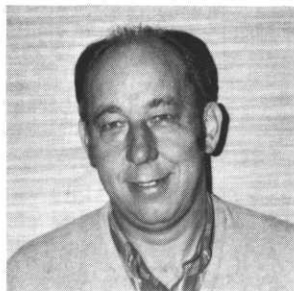


improvement to those in the golf course and turfgrass management profession. It will bring some of the nation's top researchers, educators, golf course superintendents and turfgrass managers together for this unique educational conference.

The conference will feature seven of GCSAA's most popular continuing education seminars, staff technician training courses, a national 'selling and buying' type exhibition trade show, a turfgrass research conference, a golf/turfgrass market research workshop, an outside turfgrass equipment demonstration and a national golf championship to benefit turfgrass research.

"September is an excellent time for manufacturers and distributors of golf course equipment and supplies to demonstrate their products," said GCSAA President Eugene D. Baston, CGCS, "as this is the time of the year when golf course managers plan purchases. We believe this mid-year conference will be very beneficial to our members and to our advertisers and distributors.



**OLYMPIC  
CART PATHS  
BY  
ORLAND MAENKE  
OLYMPIC HILLS  
GOLF CLUB**

All clubs have certain problems with allowing carts out after a good rain. As the years passed, the demand for carts grew and in turn the fleet also grew. With this, of course, the problems increased. This past summer we decided that a major cart path improvement and extension was in order.

After careful measurement and consideration toward play, we found that 12,780 sq. yards of rock path extension and 4,500 sq. yards of asphalt improvement would be needed.

We began by cutting and removing the sod at 1 1/2", then recut at 1 1/2" with the sod cutter to get our 3" rock depth.

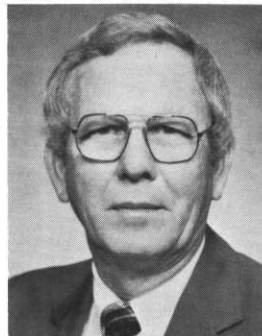
One of our club members hired the crew to remove the sod and relay it in an open lot. This saved us the cost of removing the first 1 1/2" and gained the member a beautiful play area for his kids and their friends.

We removed the second 1 1/2" of dirt with a front loader and dump truck, hauling it to a holding area to be used later for other course projects. Then the rock was hauled in by semi-trucks to various on street locations. From there we hauled it to the paths. Leveling was done by the tractors loader bucket and back blade, leaving a small amount of edge to clean up with shovels.

The sod cutting and all other labor, excluding sod removal, was done by my staff with little or no interference to their regular course duties.

The Asphalt Company came in, finished their 4,500 sq. and were out in 1 1/2 days; thus completing our project. We no longer have days where carts are not allowed; only days where carts must remain on the paths.

With our new system you do not have to leave a path from #2 green to #7 tee or from #12 green to the clubhouse.



**NEW G.C.S.A.A.  
PRESIDENT**

Eugene D. Baston, CGCS, Birmingham, Ala., was elected president of the 6500-member Golf Course Superintendents Association of America (GCSAA) during the Association's Annual Membership Meeting, February 12, 1985. He succeeds James W. Timmerman, CGCS, Bloomfield, Michigan.

Riley L. Stottern, CGCS, golf course superintendent for the Jeremy Ranch Golf Club, Park City, Utah, was elected vice president.

continued on Page 7