



AFFILIATED WITH GOLF COURSE SUPERINTENDENTS' ASSN. OF AMERICA

VOLUME 13 - NUMBER 11

NOVEMBER 1984

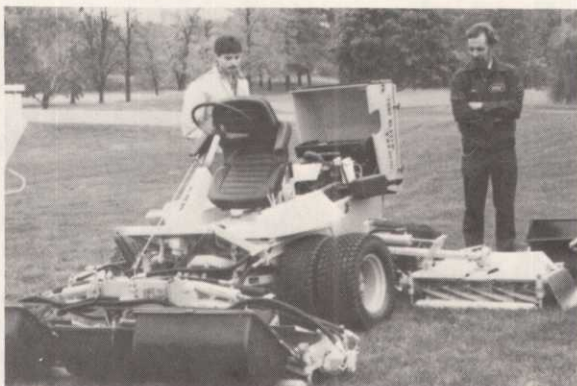
## INTERACTION AT INTERLACHEN



**NOW HEAR THIS!** Host Superintendent Doug Mahal gives up some secrets on putting green care.



**"BEDDY BYE".** Doctor Donald White discusses how to put your course to bed for the winter.



**HIGH-POWERED.** Kromer Co. shows off new five gang fairway mower to interested superintendents.



**DON'T MISS IT!** Co-Chairman Jim Wodash puts finishing touches on plans for super big turf conference.