

# Minnesota Golf Course Superintendents' Association

AFFILIATED WITH THE GOLF COURSE SUPERINTENDENTS' ASSOCIATION OF AMERICA

MAY 1981

## HOLE



## NOTES

MAILING ADDRESS: 6550 YORK AVE. SOUTH SUITE 301 EDINA, MINNESOTA 55435 PHONE:(612) 927-4643 EDITING COMMITTEE: DALE CALDWELL LARRY MUELLER & DENNIS HENDRICKSON

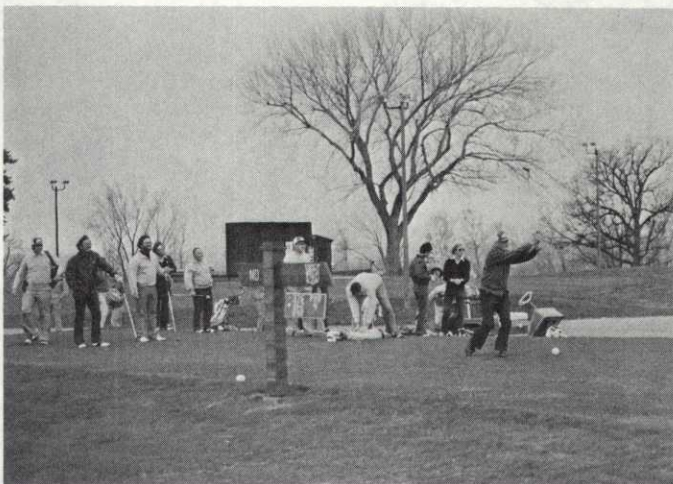
## LEARN & PLAY AT MANKATO



**NOW HEAR THIS!** Boots Fuller, Host Superintendent, discusses the USGA recommendations for the Mankato C.C.



**DECEPTIVE.** No, the Mankato clubhouse does not sit on the 18th Green. Actually, it's 80 yds. away.



**SENIOR SENIOR.** Carl Anderson, Life Member, opens another season with a mighty whack.



**TAYLOR TALKS.** Don Taylor of the U of M discusses size of sand particles as related to topdressing greens.