

Minnesota Golf Course Superintendents' Association

AFFILIATED WITH THE GOLF COURSE SUPERINTENDENTS' ASSOCIATION OF AMERICA

JUNE 1981

HOLE



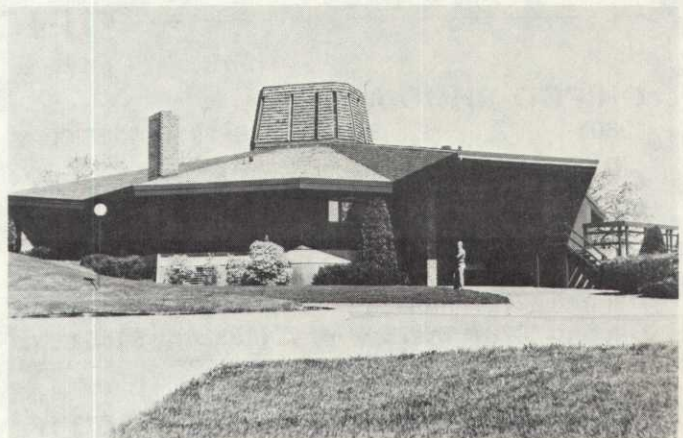
NOTES

MAILING ADDRESS: 6550 YORK AVE. SOUTH SUITE 301 EDINA, MINNESOTA 55435 PHONE:(612) 927-4643 EDITING COMMITTEE: DALE CALDWELL LARRY MUELLER & DENNIS HENDRICKSON

SCENES FROM ST. CLOUD



EDUCATION. Jim Lyne of the Cushman Company held forth on repair and maintenance.



STRIKING. St. Cloud Country Club's modern clubhouse belies historic setting on the banks of the Mississippi.



CHALLENGE. 185 yard drop shot Par 3 offers plenty of scenery as well as difficulty.



EQUIPMENT. Cushman products were on display and attracted lots of attention.