

Minnesota Golf Course Superintendents' Association

AFFILIATED WITH THE GOLF COURSE SUPERINTENDENTS' ASSOCIATION OF AMERICA

JULY, 1981

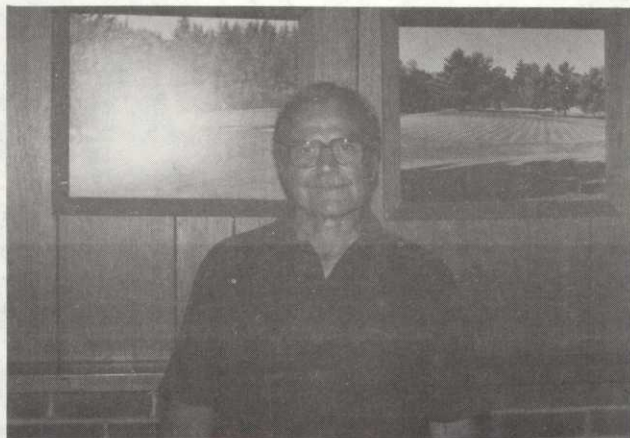
HOLE



NOTES

MAILING ADDRESS: 6550 YORK AVE. SOUTH SUITE 301 EDINA, MINNESOTA 55435 PHONE:(612) 927-4643 EDITING COMMITTEE: DALE CALDWELL LARRY MUELLER & DENNIS HENDRICKSON

MORA MEETING MEMORIES



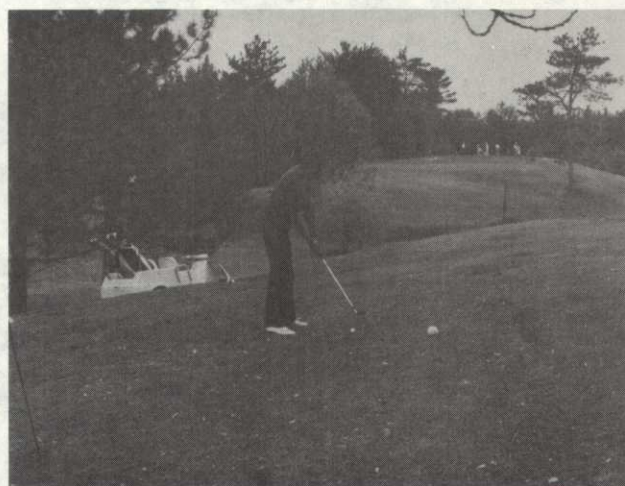
GENIAL HOST. Fred Anderson saw to it that a great time was had by all attendees.



NUTS & BOLTS. New Hahn topdressing machine is explained in great detail at Robertson display.

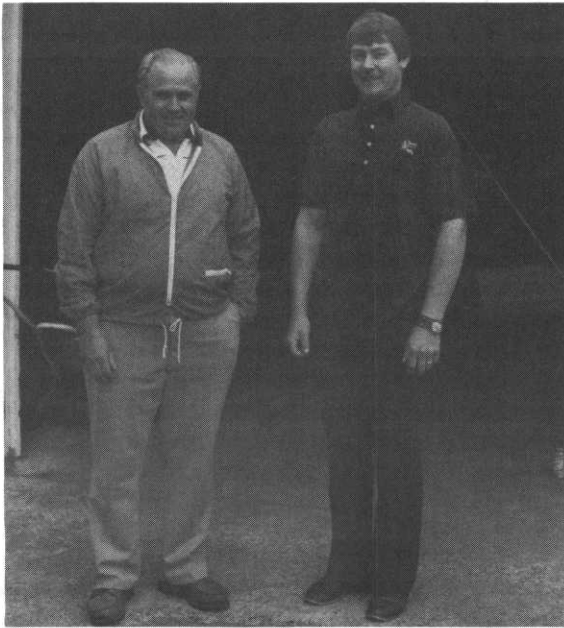


IDEA SHARING. Left to right, Carl Tychsen, Dick Ulrick and Irv Novak discuss turf problems.



SOME CHALLENGE. Jim Brown of Spicer tangles with difficult Par 3 at Mora Country Club.

MORE FROM MORA



WELCOME BACK. Lyle Olson, right, is back in the area as superintendent at Forest Hills C.C. after a year's absence. With him is Bob Messerli, his mechanic.



BRAINS. Left to right, Nick Dunn, Joe Wilmes, Russ Rose, John Wiley and Roger Kisch discuss sandtop dressing.

Call US
for the best
in Turf Equipment,
The KROMER CO
612/472-4167



- *MYERS Sprayers
- *SMITHCO Red Rider, Trucksters, Sprayers,
Trap Rakes
- *HOWARD 48" to 82" Rotary Mowers
- *HECKENDORN 36" to 88" Rotary Mowers
- *TURF-VAC Leaf & Debris Vacuums
- *ROSEMAN Gang Mowers
- *DIADEM Fertilizer Spreaders
- *HEFTY Diesel & Gas Tractors
- *DAVIS 500 Golf Cars
- *KWH Blowers & Mist Blowers
- *TEX. REF. Tire Seal
- *WD-40 Preservative

KROMER CO

3455 County Road 44, Mound, Mn. 55364
TELEPHONE 612-472-4167

Question Of The Month

WHAT DO YOU USE AS A MEASURING POINT TO RESTRICT THE USE OF GOLF CARS ON RAINY DAYS?

___ INCHES OF RAIN. LIST AMOUNT

___ OBSERVE CONDITIONS ON KNOWN WET AREAS

___ GOLF CARS GO REGARDLESS OF GROUND CONDITIONS

___ OTHER METHODS. PLEASE DESCRIBE:

___ NUMBER OF GOLF CARS AT YOUR COURSE

_____ NAME

_____ CLUB

MAIL TO: M.G.C.S.A., SUITE 301
6550 YORK AVENUE SOUTH, EDINA 55435