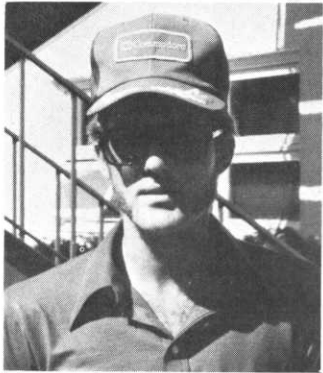


This can easily be done if the 40 rods (660 feet) distance is laid out in an area to be sprayed and permanent markers are put in flush with the ground so they will not affect mowing, etc. The operator can then time himself through this measured distance each time he sprays. By comparing this time with the time from the calibration calculations, he will know if he is on target for travel speed.

It is also advisable to occasionally measure the amount of chemical and water mixture used in this distance to find out if the application rate has changed due to nozzle wear or pressure changes. A chemical and water mixture may also have a different application rate than water so this should be checked after calibrating with water and before applying the mixture.



CONGRATULATIONS. CARLOS!

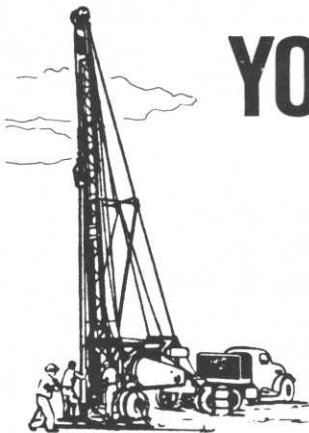
Carlos G. Stimson, superintendent of Brookings (S.D.) Country Club, Route 4, Lake Campbell, has been designated a Certified Golf Course Superintendent by the Golf Course Superintendents' Association of America.

Stimson, superintendent of the Brookings course since March 1975, received the honor at a May 10 new members party at the club. The award was presented by Green Chairman Bill Parriot.

Carlos and his wife, Jean, live at Route 4, Brookings. They have a nine month old son, Christopher.

In order to become certified, an applicant must be currently employed as a golf course superintendent with five years' experience and a Class A member of G.C.S.A.A. for two years. He also must pass a rigorous six hour examination testing his knowledge of the rules of golf, practical turf management, plant protectant chemicals, business administration, personnel management and the history, ethics, purpose and procedures of G.C.S.A.A. and his profession.

The certification program was instituted by G.C.S.A.A. in 1971 as a means of recognizing outstanding and progressive superintendents. More than 500 G.C.S.A.A. members are now entitled to use the letters "CGCS" after their names.



YOUR BEST SOURCE OF WATER

- Experienced well drilling contractors
 - Well and pump maintenance and repairs
 - 3-D well photo surveys
 - 24-hour answering service

Bergerson-Caswell, Inc.

CALL FOR A FREE ESTIMATE
612-479-3121

5115 Industrial St., Maple Plain, Mn. 55359

MEMBER: M.G.C.S.A. AND G.W.I.