

# Minnesota Golf Course Superintendents' Association

AFFILIATED WITH THE GOLF COURSE SUPERINTENDENTS' ASSOCIATION OF AMERICA

JUNE 1979

# HOLE



# NOTES

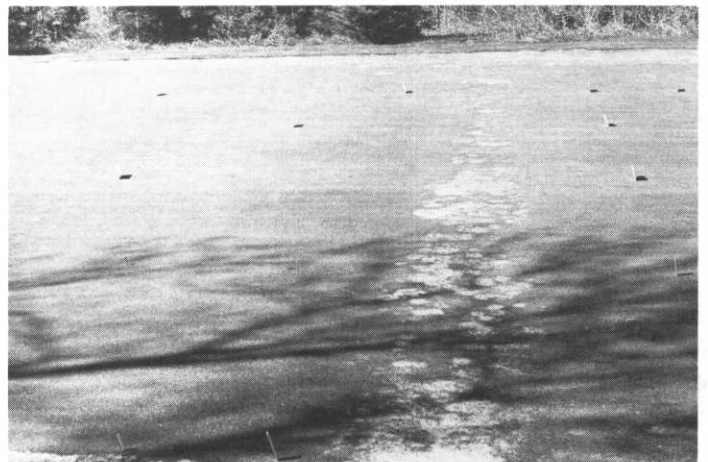
MAILING ADDRESS: 6550 YORK AVENUE SOUTH SUITE 301  
EDINA, MINNESOTA 55435 PHONE: (612) 927-4643

EDITING COMMITTEE: D. DeSPLINTER,  
G. OSTLER, L. MUELLER, J. LINDBLAD

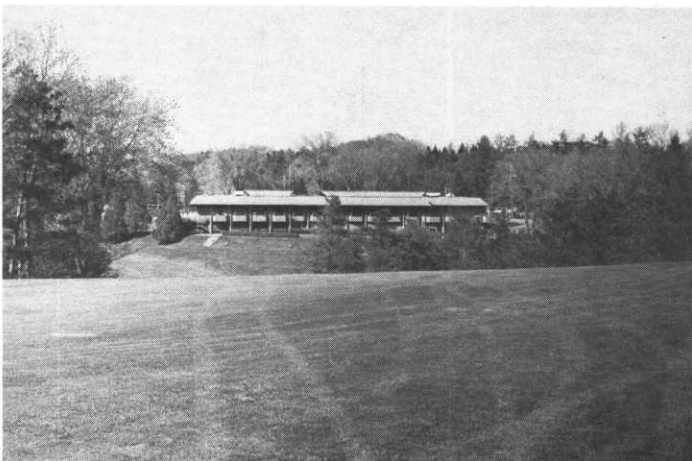
## ROCHESTER TURF PLOTS



OVERALL VIEW. Rochester Turf Plot was located behind third green in background.



PERFECT YEAR. Last winter produced perfect conditions to test preventive chemicals. Note untreated area.



IDEAL SETTING. Rochester Country Club Clubhouse nestled among the pines as seen from fourth fairway.



TIGHT. Narrow pine-lined fairways are normal for all holes at Rochester C.C.