

# Minnesota Golf Course Superintendents' Association

AFFILIATED WITH THE GOLF COURSE SUPERINTENDENTS' ASSOCIATION OF AMERICA

SEPTEMBER 1978

# HOLE



# NOTES

MAILING ADDRESS: 6550 YORK AVENUE SOUTH SUITE 301  
EDINA, MINNESOTA 55435 PHONE: (612) 927-4643

EDITING COMMITTEE: G. OSTLER, CHAIRMAN  
K. SCOTT, B. JOHNSON, G. JENNRICH

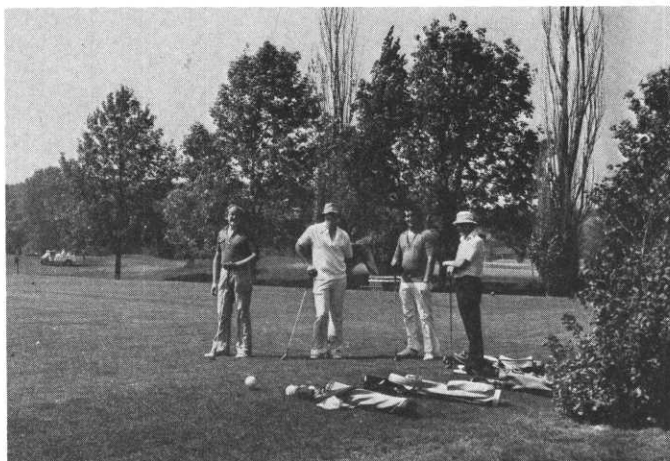
## HOT TIME IN NORTHFIELD



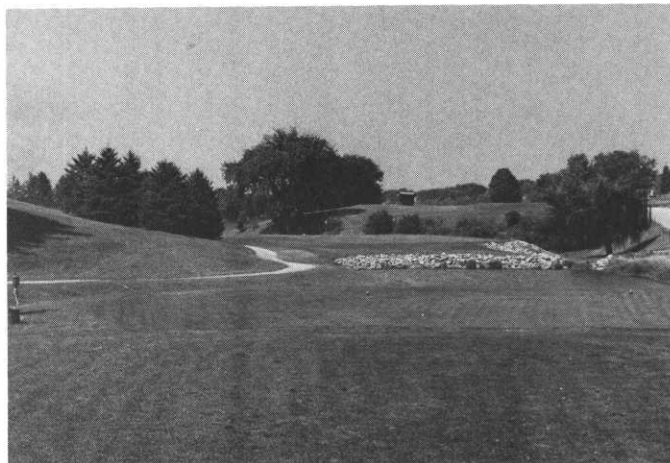
ADVICE. Host Superintendent Allen Ista, left, gets a sage opinion from Paul Miller.



TOO HOT TO WALK. Dick DeSplinter, right, relaxes while Dean Sime and Bill Johnson pose.



WHEW! Light shirts and brimmed hats give small respite from hot spell.



ROCKY SHORE. Great Par 3 features water in front and all around the right and rear.