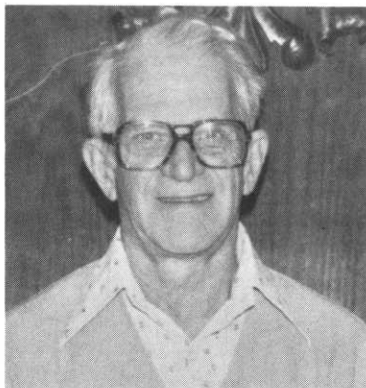


# MEET YOUR SUPERINTENDENTS !



JOHN LIGHTFOOT of the Cloquet Country Club is one of the extremely dedicated workers in the quest for a better turf. John not only belongs to M.G.C.S.A. which he joined in 1965 and G.C.S.A.A. but he also was the motivating force behind the formation of the Arrowhead Turf Association in 1968. This association is comprised mainly of superintendents in northeastern Minnesota with John serving as an officer in the organization from its inception until this spring. John also showed his desire to learn by becoming Minnesota's second Certified Golf Course Superintendent on December 6, 1974. John has served as superintendent at Cloquet since 1965 after previously having a long background in landscaping. When not at the course John likes to enjoy gardening and square dancing with his wife, Edith.



DALE CALDWELL is still serving his first full year at the Town and Country Club in St. Paul having been appointed superintendent of that club in July of last year. Prior to that Dale had served as the Assistant Superintendent at the Interlachen Country Club as well as working part time at Moorhead Country Club and Willmar Golf Club while attending school. Dale is well fortified with turf knowledge having received a Bachelor of Science degree in Turf Grass Management from Penn State University. A member of M.G.C.S.A. since 1974, Dale also belongs to the G.C.S.A.A. One of Dale's favorite hobbies is photography and I am sure two of his favorite photographic subjects are his wife, Linda, and their four and one-half month old daughter, Kim.

## Nutrient deficiencies, weeds, diseases, thin turf, insects.

For the superintendent who has everything . . . or anything . . . or who just wants to make a good thing better . . . ProTurf offers research tested, golf course proven professional turf products.

Just give me a call.



A division of  
O. M. Scott & Sons

### Mike Redmond

Technical Representative  
8364 Kentucky Avenue North  
Brooklyn Park, Minn. 55445  
Telephone: 612/425-1028

