

Minnesota Golf Course Superintendents' Association

AFFILIATED WITH THE GOLF COURSE SUPERINTENDENTS' ASSOCIATION OF AMERICA

MARCH 1978

HOLE

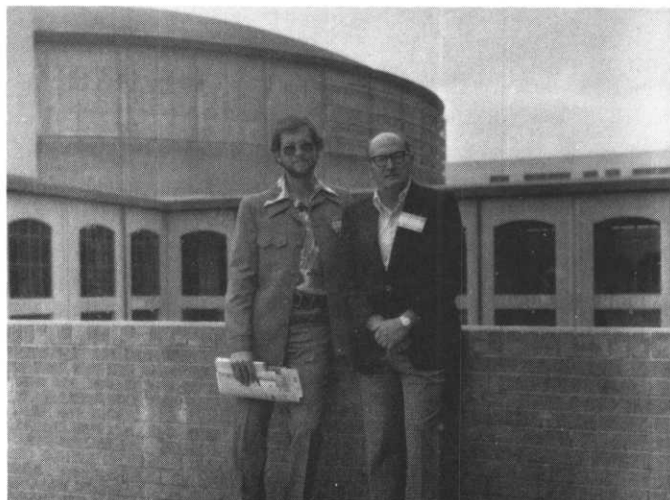


NOTES

MAILING ADDRESS: 6550 YORK AVENUE SOUTH SUITE 301
EDINA, MINNESOTA 55435 PHONE: (612) 927-4643

EDITING COMMITTEE: G. OSTLER, CHAIRMAN
K. SCOTT, B. JOHNSON, G. JENNRICH

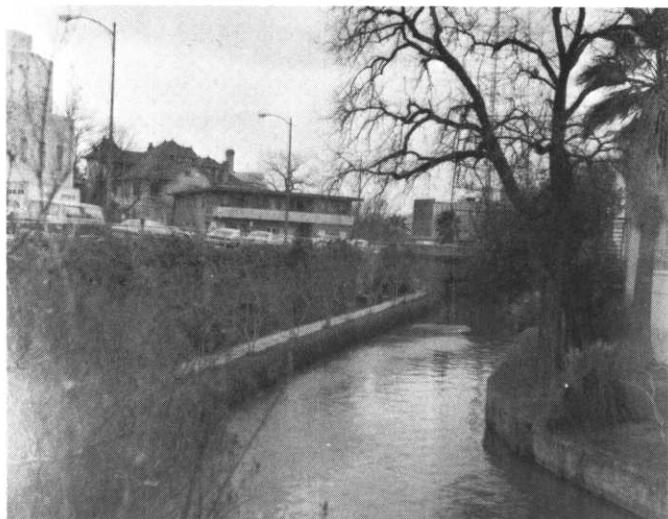
SAN ANTONIO SCENES



Dennis Hendrickson, left, and John Fuller pose before entering Convention Center.



The Alamo on a bright sunny day fascinates visiting superintendents.



San Antonio Canal near El Tropicano Motel, center of Minnesota activities.



Boots Fuller, left, and Dick DeSplinter inspect Texas A&M turf plots.