

# 1978 GCSAA ELECTION RESULTS

President



George W. Cleaver (Maryland)

Vice President



Charles H. Tadge (Ohio)

NEW DIRECTOR

James A. Wyllie (Ontario)



James A. Wyllie, CGCS, has been turf manager of the Lambton Golf and Country Club, Ltd., Toronto, Ontario, since 1967. Previously, he was general manager and superintendent of Huntington Golf and Country Club, Nashville, Ontario.

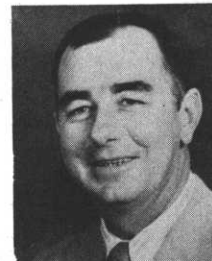
Wyllie has taken the turf management course at the University of Guelph, Ontario. He also attended

Runnymede Collegiate.

Wyllie, a 17-year member of GCSAA, has served as president of both the Canadian and Ontario GCSAs. He is a member of the Advisory Council of the Canadian Turfgrass Research Foundation.

In his community, Wyllie is convenor and coach of the Brampton Minor Hockey Association and past chairman of the Brampton Cubs and Scouts.

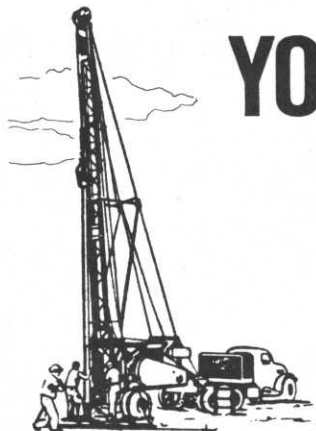
REELECTED DIRECTOR



David C. Holler (Pennsylvania)

ADDITIONAL BOARD MEMBERS

Louis D. Haines, Secretary-Treasurer  
Michael R. Bavier, Director  
R. H. Eichner, Director  
Melvin B. Lucas, Director  
Ted W. Woehrle, Past President



## YOUR BEST SOURCE OF WATER

- Experienced well drilling contractors
- Well and pump maintenance and repairs
  - 3-D well photo surveys
  - 24-hour answering service

**Bergerson-Caswell, Inc.**

CALL FOR A FREE ESTIMATE  
612-479-3121

5115 Industrial St., Maple Plain, Mn. 55359

MEMBER: M.G.C.S.A. AND G.W.I.