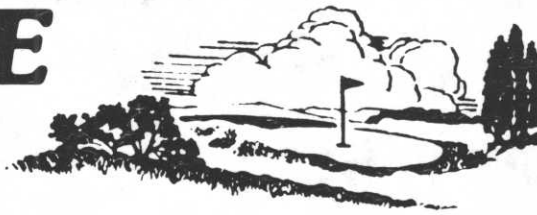


# Minnesota Golf Course Superintendents' Association

AFFILIATED WITH THE GOLF COURSE SUPERINTENDENTS' ASSOCIATION OF AMERICA

JULY 1978

## HOLE

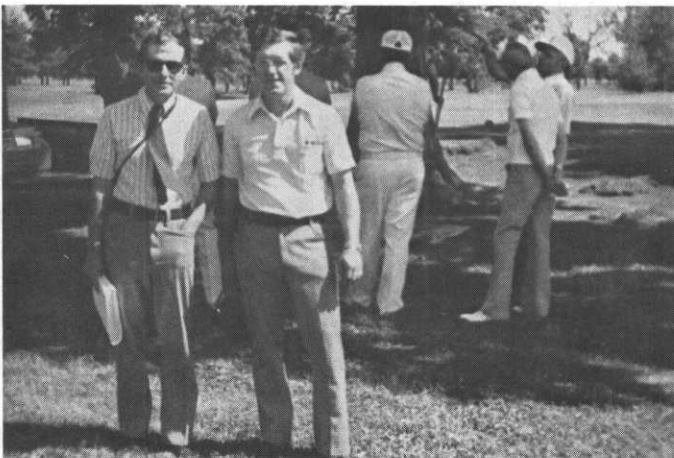


## NOTES

MAILING ADDRESS: 6550 YORK AVENUE SOUTH SUITE 301  
EDINA, MINNESOTA 55435 PHONE: (612) 927-4643

EDITING COMMITTEE: G. OSTLER, CHAIRMAN  
K. SCOTT, B. JOHNSON, G. JENNRICH

## ELM INJECTION DEMO



LEADERS. Dr. David French, left, Dept. of Plant Pathology, U of M and President Keith Scott ready to start demonstration.



WORKERS. Drilling holes and inserting tubes in roots excavated at base of elm.



TANGLE. Typical network of tubes leading to each tapped root on elm.



ONLOOKERS. Part of the interested crowd that attended the demonstration at the Austin Country Club.