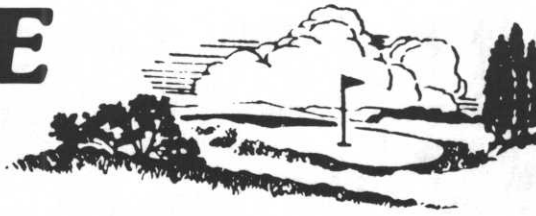


# Minnesota Golf Course Superintendents' Association

AFFILIATED WITH THE GOLF COURSE SUPERINTENDENTS' ASSOCIATION OF AMERICA

AUGUST 1978

# HOLE



# NOTES

MAILING ADDRESS: 6550 YORK AVENUE SOUTH SUITE 301  
EDINA, MINNESOTA 55435 PHONE: (612) 927-4643

EDITING COMMITTEE: G. OSTLER, CHAIRMAN  
K. SCOTT, B. JOHNSON, G. JENNRICH

## MGCSA PICNIC PERFECT



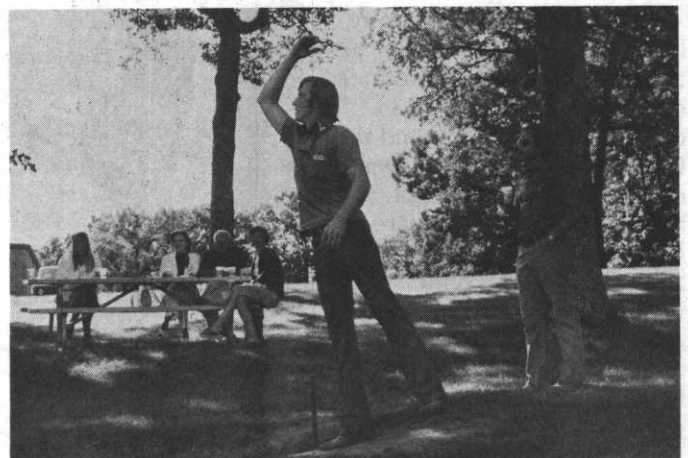
SMOKEY. Host Supe Joe Morris in checkered pants advises food and drink host, Milt Wiley, behind smoke.



GOING NOWHERE. Energetic kids loved covered treadmill. Lots of action... no results.



DIZZY. Only children have the stomach to stand much of this ride.



RINGER. Guess who? Shows excellent form in the good old game of horseshoes.