



Above: Bruce Schweiger at the Noer Center

Below: Bruce has been involved in the industry a long time as proven by this picture of him helping Joe Wollner draw prizewinners.



O.J. Noer Turfgrass  
Research  
and Education Facility  
2502 County Highway M  
Verona, WI 53593

Phone: (608) 845-2535  
Fax: (608) 845-8162  
Email: plkoch@wisc.edu  
Website: <http://tdl.wisc.edu>

## PROGRO <sup>solutions</sup>

ABSOLUTE CONFIDENCE

**Servicing the professional  
golf, lawn care, landscape  
and sports turf markets**

Proudly representing the  
following Brands...

Armor Tech Products	Holganix Bio
Arysta	Hydro Pak Soil Surfactants
Barenbrug Seeds	JRM
BASF	KNOX Fertilizers
Calcium Products	Miltona
EC Grow Fertilizers	Olsen Brand Fertilizers
EnP Specialty Liquids	Par Aide
Foliar Pak	SePro
Greenleaf Technologies	Standard
Greens Groomer	Valent

### **Brett Ziegler**

Regional Agronomist  
Chicago/Wisconsin  
847.302.9673  
[brett@progro-solutions.com](mailto:brett@progro-solutions.com)

### **Mike Werth**

Regional Agronomist  
Wisconsin/Illinois  
608.214.7011  
[mike@progro-solutions.com](mailto:mike@progro-solutions.com)

**Business & Distribution Center**  
**21969 N. Pepper Rd.**  
**Barrington, IL 60010**  
**847.381.9333**  
**[www.progro-solutions.com](http://www.progro-solutions.com)**

## Questions?

By David Brandenburg, Golf Course Manager, Rolling Meadows Golf Course

I was saddened when I heard Steve Spears the long time superintendent at St. Germaine Golf Course had passed away in early May. We were not good friends but friends just the same and we would talk at conferences and the occasional phone call. I knew him enough to know he know he loved working at the golf course and was excited about his young family.

We both served on the boards of our respective associations at the same time and we had both worked with the same golf professional giving us a reason to talk. Steve always had a smile to offer and seemed happy in the northwoods.

I was further saddened a couple days later when I heard Dick Henken a Fond du Lac native and former golf professional had passed away. I didn't know a lot about Dick but I knew his dad and brother well. The times I met Dick he had a huge smile and away about him that made people comfortable.

Dick has lived in Florida for some time with his wife and children. He was looking forward to his son's graduation and daughter's wedding this summer.

Dick and Steve died the same way, they took their own lives. Suicide is a hard word to say and a harder word to imagine. It leaves questions, anger and doubts in the minds of those behind. Why? Should I have known? Could I have helped? Did I cause this? Along with the questions it leaves feelings of grief and sadness for the family but also a feeling of helplessness.

From my point of view it seemed Dick and Steve seemed to have the best years of their lives in front of them. Neither was rich but neither was poor. They had families who loved them and they had jobs they seemed to enjoy. I am sure there were troubles as well but we all have troubles.



Steve Spears shown speaking at the NGLGCSA Spring Symposium in 2012. Steve passed away on May 6th, 2013.

So what can we as friends and family do? Perhaps nothing could have kept these two men around to see the golden years. We will never know the hows or whys of their situations. What we can do is keep in touch with friends and family. Stop a few minutes in our daily lives and call someone who you haven't heard from in a while.

Thank you to Jay Pritzle and the Northern Great Lakes chapter for organizing a golf fundraiser to set up a education fund for Steve and Marci's children Ethan and Ella. It was a beautiful day at the St. Germain Golf Course and a great time was had by all who attendend.

-----

AGRICULTURAL CHEMICALS: Prices Paid United States, March 2010-2013				
Commodity	2010	2011	2012	2013
Dollars per gallon				
2, 4-D, 4 lb./gal.	18.00	18.00	20.10	20.40
Acetochlor, 6.4-7 lb./gal.	70.30	69.60	70.80	74.50
Atrazine (AAtrex), 4 lb./gal.	18.90	17.30	17.60	17.80
Glyphosate (Roundup), 4 lb./gal.	22.80	16.80	17.90	18.20
Pendimethalin (Prowl), 3.3 lb./gal.	36.30	38.70	40.40	41.60
Simazine (Princep), 4 lb./gal.	25.60	24.50	25.40	26.40
Cyfluthrin (Baythroid), 2 lb./gal.	310.00	294.00	302.00	303.00

Source: USDA, NASS

FERTILIZER: Prices Paid North Central Region 1/, March 2010-2013				
Commodity	2010	2011	2012	2013
Dollars per ton				
Anhydrous Ammonia	520	776	812	877
Nitrogen Solution, 28%	260	358	381	395
Sulfate of Ammonia	300	386	413	487
Urea 44-46%	446	519	547	574
Superphosphate	465	536	582	636
Muriate of Potash	501	594	641	581

1/North Central States: IL, IN, IA, MI, MN, MO, OH, and WI.

Source: USDA, NASS

FUEL: Prices Paid Lake States Region 1/, March 2010-2013				
Commodity	2010	2011	2012	2013
Dollars per gallon				
Gasoline, unleaded				
Service station 2/	2.79	3.54	3.79	3.67
Bulk delivery 2/	2.84	3.56	3.80	3.67
Diesel fuel, bulk delivery 3/	2.57	3.54	3.66	3.58
L.P. gas, bulk delivery 3/	1.88	1.97	2.06	1.79

1/Lake States: MI, MN, WI. 2/Includes all taxes. 3/Excludes all taxes.

Source: USDA, NASS

FARM MACHINERY: Prices Paid United States, March 2010-2013				
Commodity	2010	2011	2012	2013
Dollars				
Tractor, 2-wheel drive				
30-39 PTO horsepower	18,800	19,000	19,000	19,900
70-89 PTO horsepower	39,900	41,000	43,000	44,000
140-159 PTO horsepower	114,000	123,000	128,000	133,000
Manure spreader				
225-310 bu. capacity	13,500	14,200	15,700	16,200
Mower-conditioner, pull type				
8-10 ft. sickle	20,200	20,800	21,700	22,400
14-16 ft. sickle	30,600	32,700	33,500	34,200
Baler, 1200-1500 lb. round bale	25,100	25,900	28,000	28,500

Source: USDA, NASS

Numbers from the United States Department of Agriculture - National Agricultural Statistics Service show chemicals, fertilizer, gasoline and machinery are all on the rise.



Thanks to your donations the Par-4Research program raised \$10,960 for Turf Research Programs at UW Madison.

Funds are raised through a online auction of donated rounds of golf and golf related items. The four year total is over \$39,000.

Look for your chance to participate next spring.



As editor I apologize for the lateness of this issue. Work at the golf course takes precedence over work on the magazine and this spring kept most of us busier than usual as we fought with Mother Nature to maintain quality golf courses.

The problems from the herbicide Imprelis seem to keep growing as many courses are having arborists revisit their properties to look at additional pines as well as honey locust, poplars as well as other species.

The use of this herbicide caused many sleepless nights for golf course superintends but one recently confided in me that the payments from DuPont have been a savior in a way for his club.

That may be an overstatement but I do know the payments have allowed golf courses to invest in capital equipment and repairs.

The March issue of Golf Digest highlighted the top 50 professional players in earnings for 2012. At the bottom was Tom Lehman with only \$3.1 million on course and \$1.75 million off course earnings. I say only because Tiger Woods tops the list with \$9.1 million in on course earnings and a whopping \$77 million in off course earnings.

Arnold and Jack are listed Third and Fourth with \$36 million and \$28 million primarily in off course revenue.

The highest female was Paula Creamer at 44th with \$875,000 on the course and \$4.5 million off the course. Wisconsin's own Steve Stricker was 34th with \$3.8 million on the links and \$2.5 million off course.

When you use the best, it shows.

With a portfolio of products unmatched in the industry, Syngenta is a necessity for every great business. From herbicides to fungicides to growth regulators, we have everything you need to maintain healthy turf.

Contact Phil Spitz to learn more about Syngenta products.  
Cell: 414-429-2015 philip.spitz@syngenta.com

www.greencastonline.com

©2011 Syngenta Crop Protection, LLC, 410 Being Road, Greensboro, NC 27409. Important: Always read and follow label instructions before buying or using Syngenta products. The label contains important conditions of sale, including limitations of remedy and warranty. Meridian®, Renexon®, and Tenacity® are not currently registered for use in all states. Please check with your state or local extension service prior to buying or using these products. Scientar® GC is a Restricted Use Pesticide. Aaward®, Barricade®, Barricade®, Concept®, Decolil ULTRAD®, Decolil Weather-Stat®, Decolil Z®, Decolil Z®, Falcide®, Healdy®, Heritage®, Insectar®, Medallion®, Meridian®, Monument®, Renexon®, Tenacity®, Tenacity®, and the Syngenta logo are trademarks of a Syngenta Group Company.

# EDITOR'S NOTEBOOK

## Wisconsin Weekly Weather, Selected Cities, Ending as of 7:00 a.m. on June 23, 2013

City	Temperature						Growing degree days (modified base 50) 1/		Precipitation				
	Avg. max.	Avg. min.	High max.	Low min.	Avg.	Avg. dep. from normal *	Mar. 1 to Jun. 22	Mar. 1 To Jun. 22 normal*	Last Week	Since Jun. 1	Jun. 1 dep. from normal *	Year to date	Year dep. from normal *
Eau Claire	80	59	85	54	69	+2	702	782	2.30	3.85	+0.75	23.90	+10.48
Green Bay	78	56	86	45	67	+1	686	697	0.93	2.96	+0.56	16.72	+4.70
La Crosse	84	62	90	56	73	+3	826	889	2.56	4.40	+1.64	23.32	+9.61
Madison	81	60	86	47	70	+3	831	877	2.60	5.92	+3.07	26.01	+11.72
Milwaukee	77	58	85	49	67	0	668	n.a.	1.42	3.65	+1.19	23.16	+7.72

1/ Formula used: GDD = (daily maximum (86°) + daily minimum (50°))/2-50°; where 86° is used if the maximum exceeds 86° and 50° is used if the minimum falls below 50°. \*Normal based on 1971-2000 data. Source: NCEP/NOAA Climate Prediction Center <http://www.cpc.ncep.noaa.gov>. n.a.=not available. T=trace. Source: USDA, NASS, Wisconsin Field Office.

Cold and wet was the name of the game this spring as golf courses struggled to get open, provide good playing conditions and then attract play during cold wet weather. The chart above and right are from the United States Department of Agriculture – National Agricultural Statistics Service.

Above you can see temperatures and growing degree days are not too far behind normal but through June 23rd all areas surveyed are way above normal precipitation.

The chart on the right shows days suitable for field work which could correspond to days suitable for golf course work. After last years early spring and plenty of days for golf this year has been a rude awakening. The only good thing that comes from the rain days is polished equipment and spotless shop floors as crews were put on cleanup detail when it was too wet to work.

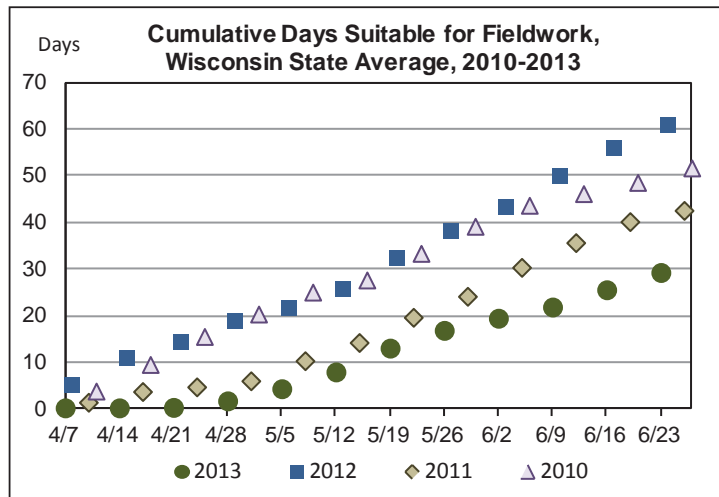
Application timing for seedhead suppression and take all patch became a crap shoot even for those using local growing degree days as a guide.

If I had a quarter for every customers who said “at least your saving money not having to run the pumps” I would be rich. I have given up on explaining the little amount pumping costs compared to the revenue losses we have seen.

It is easy for golf course staffs to get frustrated because work is not getting done but also because the reduced play levels will likely add to budget woes.

-----

If you are looking to step back in time get out in your plus



fours and hickory shafted clubs the Hickory Golfers of Wisconsin have officially been formed as a chapter of the international association. Along with the 4th annual Kummel Cup Aug. 16-18 at Lawsonia Links additional events will be held May 11 at Whistling Straits, July 27 at Tuscumbia and Sept. 28 at Cherokee CC.

-----

It is hard to believe July 4th will have passed by the time you are reading this. I look forward to seeing many of you at the Wisconsin Turfgrass Field Day on July 30th at the Noer Center.

**Wisconsin Turf Equipment Corp.**  
Established in 1956

\*Deep Tine Aeration \* Core Aerification Services  
\*Vibrating Tine Aeration / Seeding  
\*Reel Grinding \*Tune-ups \* Oil Changes  
\*General Maintenance \* Grass Seed  
Equipment Rental \* Line Marking Paints \* Overseeding  
Custom made Hydraulic Hoses \* Used & Demo'd Equipment

800-443-1840  
sales@wisconsinturf.com  
www.wisconsinturf.com

1306 West B-R Townline Rd. Beloit, WI 53511-9002

**Bayer Environmental Science**

**John M. Turner**  
Sr. Sales Specialist - Golf  
Bayer Environmental Science

Cell Phone: (630) 215-6110  
Office: (630) 443-7807  
Fax: (630) 443-7839  
Email: [john.turner@bayercropscience.com](mailto:john.turner@bayercropscience.com)





**LEFT: The 2013 WPGA / WGCSA Super-Pro tournament was won by (left) Charlie Brown, PGA Professional and (right) John Feiner, Golf Course Superintendent with a net score of 66.**

### PREVIOUS WINNERS

- 2012 - Seth Jamison / Craig Filley (Nakoma)
- 2011 - Eddie Terasa / Randy DuPont (North Hills)
- 2010 - Charlie Brown / John Feiner (Johnson Park)
- 2009 - Tom Dolby / Jay Pritzl (Timber Ridge)
- 2008 - Tom Dolby / Jay Pritzl (Timber Ridge)
- 2007 - Charlie Brown / John Feiner (Johnson Park)
- 2006 - Don DuChateau / Jim Van Herwynen (South Hills)
- 2005 - Charlie Brown / John Feiner (Johnson Park)
- 2004 - Eddie Terasa / Randy DuPont (North Hills)
- 2003 - Fred Hancock / Jeff Barlow (Waupaca)
- 2002 - Charlie Brown / John Feiner (Johnson Park)
- 2001 - John Freeman / Jeff Millies (Edgewood)



## The WPGA / WGCSA Super Pro

at Brown Deere Golf Club, Milwaukee WI  
 HOSTS - Tim Wegner, Golf Course Superintendent and  
 Scott Evans, Head Golf Professional



### 18 Hole Modified Chapman (Alternat Shot) Format

#### Top Ten in Division 1 -

Made up of PGA Members, Apprentices and Pre Apprentices and WGCSA Members from the same facility.

Place	Name - Pro Name - Super Name - Course	Gross	Hcp	Net Total	Team Winnings
1st	Charlie Brown, John Feiner Johnson Park GC	71	4.90	66.10	\$550.00
2nd	John Freeman, Jeff Millies Edgewood GC	74	7.65	66.35	\$420.00
3rd	Don DuChateau, Jim VanHerwynen South Hills	86	15.60	70.40	\$330.00
4th	Scott LeMire, Jeff Barlow Waupaca CC	76	5.55	70.45	\$260.00
5th	Peter Mogg, Mike Becker Horseshoe Bay GC	76	5.20	70.80	\$200.00
6th	William Rabuck, Joe Kuta Hartford GC	77	5.85	71.15	\$160.00
7th	Jason Haack, Scott Bushman Fox Valley GC	74	2.60	71.40	\$120.00
8th	Michael Crowley, Travis Krauklis Morningstar	77	4.65	72.35	\$ 80.00
9th	Jason Hogue, Steve Blake Ridgeway CC	74	1.55	72.45	
10th	Bill Graham, Jim Shaw Chenequa CC	78	4.55	73.45	

#### Top Ten in Division 2 - All other teams, including teams that have a member without a handicap.

Place	Name - Player 1 Name - Player 2 Representing	Gross	Hcp	Net Total	Team Winnings
1st	Mark Voeller, Mark Lockhart Golf Galaxy	66	3.50	62.50	\$420.00
2nd	Jeff Ellingson, Peter Meyer Edelweiss Chalet / National GG	69	3.05	65.95	\$280.00
3rd	Mike Schmeiden, Mark Robel Evergreen GC / Reinders	81	14.90	66.10	\$180.00
4th	Steve Fischer, Darrin DiChristopher Premier Golf & Utility Veh	81	9.50	71.50	\$120.00
5th	Andy Gieryn, Brian Blake Whitnall Park GC	92	20.00	72.00	\$ 80.00
6th	Ryan Wagner, John Aufderhaar Watertown CC	75	1.30	73.70	
7th	Phil Frederickson, Martin Kennedy Door Creek GC	82	8.00	74.00	
7th	Hanc Spivey, Mike Stein Dretzka Park GC	92	18.00	74.00	
9th	Brian Johnson, Joe Shirk Evergreen GC	82	7.00	75.00	
10th	Wes Toton, Erich Lange Country Club Estates GC	82	6.50	75.50	