

TABLE OF CONTENTS

THE PRESIDENT'S MESSAGE WINTER...SAYS WHO?	3
GAZING IN THE GRASS Shorter Mowing Heights are Hazardous to Summer Health.	4
PERSONALITY PROFILE So Abler's Gone...What's Next?	11
WISCONSIN PATHOLOGY REPORT Preventative Application of Fungicides for the Control of Dollar Spot	12
WGCSA Operational Reports – Lessons Learned from 2005	19
WISCONSIN ENTOMOLOGY REPORT At Long Last: Meridian (thiamethoxam) is Slated for EPA Registration in Late 2006.	29
WISCONSIN SOILS REPORT Carbonate and Organic Amendment Stability in Sand Putting Greens	31
GOLF IN THE FLATLANDS The Season Upcoming.	37
THE EDITOR'S NOTEBOOK It's All About The Weather	40
JOTTINGS FROM THE GOLF COURSE JOURNAL A Surprise! 2006 GCSAA Conference Was Surprisingly Good	47
NOTES FROM THE NOER FACILITY Noer Facility to Host International Turf Field Day	59
TDL Moss Control in Wisconsin: A Step in the Right Direction	62
BADGER STATE TURF CLIPPINGS	64

ABOUT THE COVER

Golf course artist Jennifer Samerdyke captures the essence of spring with her cover for this issue. It is a view from the first tee at the Wisconsin Old World Golf Club.

"The snow is barely gone, gray drifts of it, Compressed to ice, still lying cold upon The frozen ground beneath (where shade Persists) – and then a gentle rain comes down, The first of the spring season's showers: soft Its fall upon the sodden earth, upon The matted grasses, bleached but redolent

Of springtime odors, mix of damp, decay And fresh green growth. Already hillsides show A delicate, pale greenish cast, washed as They are of winter's refuse. Myriad Young blades of grasses are there; pervading all An elemental tenderness; the year; With one small flower open, now come round Again."

Spring's Coming
By Victor Carl Friesen

THE GRASS ROOTS

THE GRASS ROOTS is a bi-monthly publication of the Wisconsin Golf Course Superintendents Association, printed in Waunakee, Wisconsin by Kramer Printing. No part of THE GRASS ROOTS may be reprinted without expressed written permission by the editor.

EDITOR AND PUBLISHER
Monroe S. Miller
Blackhawk Country Club
P.O. Box 5129
Madison, WI 53705
groots@charter.net

EDITORIAL STAFF AND BUSINESS AFFAIRS
Dave Brandenburg
P.O. Box 314
Theresa, WI 53091



Front Row: L-R: Brian Zimmerman, Dustin Riley, Mike Lyons and Jeff Millies. Back Row: L-R: David Oberle, Eric Jasin, Chad Harrington, Randy Dupont & Mike Werth.

2006-2007 WGCSA OFFICERS AND DIRECTORS

PRESIDENT

Mike Lyons
Old Hickory CC
316 Grove Street
Beaver Dam, WI 53916
E-mail: mlyons@powerweb.net

DIRECTORS

Eric Jasin
Lake Arrowhead GC
426 St. Andrews Trail
Nekoosa, WI 54457
E-mail: arrowheadlakes@hotmail.com

VICE PRESIDENT

Dustin Riley
Oconomowoc GC
W35235 Delafield Rd.
Oconomowoc, WI 53966
E-mail: ogcristley@voyager.net

Randy Dupont
North Hills CC
7519 Arthur Rd.
Hartford, WI 53027
E-mail: rmdnhcc@earthlink.net

TREASURER

Brian Zimmerman
Milwaukee Co. Parks
9480 Watertown Plank Rd.
Wauwatosa, WI 53226
E-mail: bzimmerman@milwcnty.com

Chad Harrington
Autumn Ridge GC
335 Berge Street
Valders, WI 54245
E-mail: puter@lakefield.net

SECRETARY

Jeff Millies
Edgewood GC
W238 S9560 Kuzendorf Ct.
Big Bend, WI 53103
E-mail: jmillies@wi.rr.com

Michael Werth
Monroe CC
2639 Hillcrest Ct.
Monroe, WI 53566
E-mail: werthashot@tds.net

PAST PRESIDENT

Marc Davison
Green Bay CC
2400 Klondike Rd.
Green Bay, WI 54311
E-mail: mdavison@usxchange.net



Visit our web site at:
www.wgcsa.com



WINTER...SAYS WHO?

By Mike Lyons, Golf Course Superintendent, Old Hickory Country Club

As I sit down and begin to write my message, it's 50 degrees outside. There is no snow to speak off, and the golf course has never looked better. There is only one problem — it's January! Some courses have even opened up for play.

The WTA Winter Expo has come and gone. The speakers and topics were very good and well presented. The superintendent panel was once again outstanding. Thank you gentleman for volunteering your time and thoughts. Their presentations were so good that we have included them in this issue of the *Grass Roots*.

The last issue of the *Grass Roots* had the late Wayne Otto on the cover. What Wayne meant to this profession is hard to put into words. Mike Handrich did a wonderful job in describing what Wayne meant to him. I feel the Wee-One Foundation is doing important work in Wayne's name. We'd like everyone to become members and help with this very worthy cause. It was mentioned at the Expo that the Wee-One Foundation has made donations totaling \$81,000. Well, just recently, another member and his family have been helped through the Wee-One. The total now is nearing \$100,000. That is incredible. Please consider joining. I hope and pray I never need assistance, but it is truly comforting to know help is there if needed.

The GIS was recently held in Atlanta. I have not been able to attend many, but I am always amazed at the trade show; and the education is outstanding. My only complaint was that my hotel was too far away; we are a little slow here in Beaver Dam, but when did



taxis stop having a meter? I was just told how much. At least I think I was in a taxi.

Finally, I hope those who attended the Wisconsin Room this

year enjoyed themselves. This year's and last would not have been possible without the generosity and support of our local vendors. In this issue of the *Grass Roots* there is a list of all those who made it possible. When you are making decisions on a purchase, please keep those vendors in mind. Without their continued support, the Wisconsin Room would not be possible. Once again, thank you all!

Well, the golfing season is almost here. I hope everyone came through winter okay. I look forward to seeing many of you at our monthly meetings. Take care. ♣





Shorter Mowing Heights are Hazardous to Summer Health

By Dr. John Stier, Department of Horticulture, University of Wisconsin-Madison

Last year was a difficult year for golf course superintendents across the upper Midwest. Severe winterkill occurred on many golf courses followed by hot, dry summer conditions which reduced overseeding success and regrowth from surviving plants. In Madison, Wisconsin, additional pressure came from advocacy groups to reduce if not eliminate fungicide use on golf courses. For the most part, golfers just wanted to golf, expecting the near-perfect conditions to which they've become accustomed.

In the past 25 years we've seen amazing advancements in turf management. Automatic irrigation systems are now commonplace, mowers offer a better quality of cut, new fertilizer options offer a range of nutrient release timings, growth regulators now are used to enhance turf quality, and highly-specific, more environmentally benign pesticides are being used. The Golf Course Superintendents Association of America (GCSAA) now requires new superintendents to have a college degree to meet certification requirements; indeed, many superintendents had formal education in turf management even before the GCSAA's Professional Development Initiative went into effect.

In spite of the improvements in turf management the industry continues to struggle with maintaining putting green quality. As technology and education have improved, golfer expectations have evolved to demand consistently lower mowing heights and higher quality turf. Putting greens that were being mowed at nearly 0.25 inch heights 25 years ago are now being mowed at 0.1 inch, a 60% reduction! As turf

maintenance costs climb it becomes more important than ever to understand how the grass grows, the stresses it must tolerate, and how management can be altered to continue to provide acceptable-quality turf without increased budgets. Specifically, what effects do the lower mowing heights have on the turf?

Adaptation of turfgrasses to mowing

Mowing simulates the animal grazing which is capable of stimulating photosynthesis, leaf growth, and protein production in grasses adapted for turf (Casler and Duncan, 2003). Among turfgrasses, proper mowing height can actually increase plant density compared to unmowed swards. Creeping bentgrass (*Agrostis palustris* Huds.) is the species most commonly used

for putting greens with Penncross, Pennlinks, Penneagle, Seaside, and Emerald being the most widely used. Some recent cultivars which are gaining use include SR1020, L-93, and the Penn A and G series (McCarty et al., 2001). Ten years ago the optimal mowing height recommended for creeping bentgrass was 0.2-0.5 inches (Turgeon, 1996). Some newer cultivars are sold with a recommended mowing height of only 0.125-0.156 inches (McCarty et al., 2001). Although the newer cultivars may be capable of maintaining high turf density at 0.125 inch mowing height, research is starting to show the lower mowing heights are still detrimental and require increased inputs compared to taller mowing heights (Bruneau et al., 2001). In Wisconsin the predominant type of creeping bent-

Specializing in Nuisance Goose Management

WI: (414) 235-1635
 IL: (708) 448-8878
 WGCgoose@covad.net
 www.wildgoosechasers.com

Migratory Bird
 Management



MBM OFFERS AN INTEGRATED PROGRAM:

Border Collie Chase Program
 Egg Depredation
 Applicator of Flight Control®
 Landscape Modification
 Wildlife Signage

HOW WE DIFFER FROM OUR COMPETITORS:

- Trained Well-Educated Handlers
- Supportive Hazing Techniques to Supplement Border Collie Program
- Site Specific Management Program
- Commercially Insured
- Data Collections, Reporting, & Analysis
- Staff Biologists
- Licensed Personnel

grass is likely Penncross due to its long history of being the most commonly sold variety.

Turf growth and natural response to summer stresses

All green plants including turf-grasses depend on having green leaf tissues collect and transform the sun's energy into chemical energy via photosynthesis. The chemical energy is stored in the bonds which hold sugar molecules, produced by photosynthesis, together. Photosynthesis can occur at any temperature above freezing, with an optimal temperature range of 68-86° F for most cool-season plants (Jones, 1992). Of course many other variables affect photosynthetic rate including amount of sunlight, carbon dioxide (CO₂) supplied by air exchange between the atmosphere and the plant, water, and other factors. Plants "burn" the sugars over time in the process known as respiration in order to generate energy for growth. While photosynthesis occurs only during daytime, respiration occurs twenty-four hours a day, seven days a week and 365 days each year. Thus, sufficient photosynthesis is needed during the days of the growing season to supply energy to the plants when they are not actively photosynthesizing. Mowing temporarily increases respiration as the plants use a burst of energy to repair the leaf damage, though the benefits of mowing far outweigh the respiratory cost.

Summer imposes an additional stress on turf physiology apart from golf traffic. The high temperatures decrease the efficiency with which plants can "fix" CO₂ into sugars. Under optimal conditions, the plants use less energy in photosynthesis than they produce, resulting in a net gain of energy-rich sugars. As temperatures increase, even within the "optimal" range for photosynthesis, a conflicting process known as photorespiration causes oxygen to compete with CO₂ for

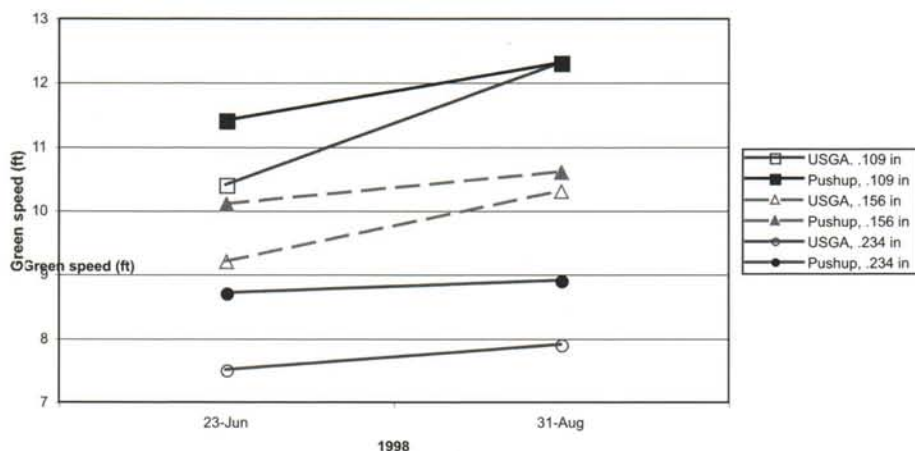


Fig. 1. Effect of mowing height (in = inches) on green speed over the summer (after Kussow, 1998).

sugar production, resulting in a net loss of energy in the plant. High humidity becomes more common in summer and reduces the amount of CO₂ uptake which also reduces photosynthesis. As temperatures increase plants produce less shoot and root growth because their enzymatic processes don't function as well as at cooler temperatures. For example, seven instead of five days may be required to produce a new leaf which reduces the recovery rate for ball marks, skids, etc. Finally, respiration increases as temperatures increase, which causes plants to "burn" additional sugars even though they are less likely to produce new growth.

The various summer stresses ultimately lead to less shoot and root growth and shorter shoot and root lives. Turf density is reduced which allows weeds such as annual bluegrass (*Poa annua*) and algae to flourish. The stresses also produce a turf which is even less capable of withstanding continuing or additional stresses such as traffic, shade, drought, and disease. Too much stress kills turf.

Evidence for harmful effects of increasingly lower mowing heights

The push for increasingly lower green heights is the demand for faster green speed. The most thorough study I've ever seen was the

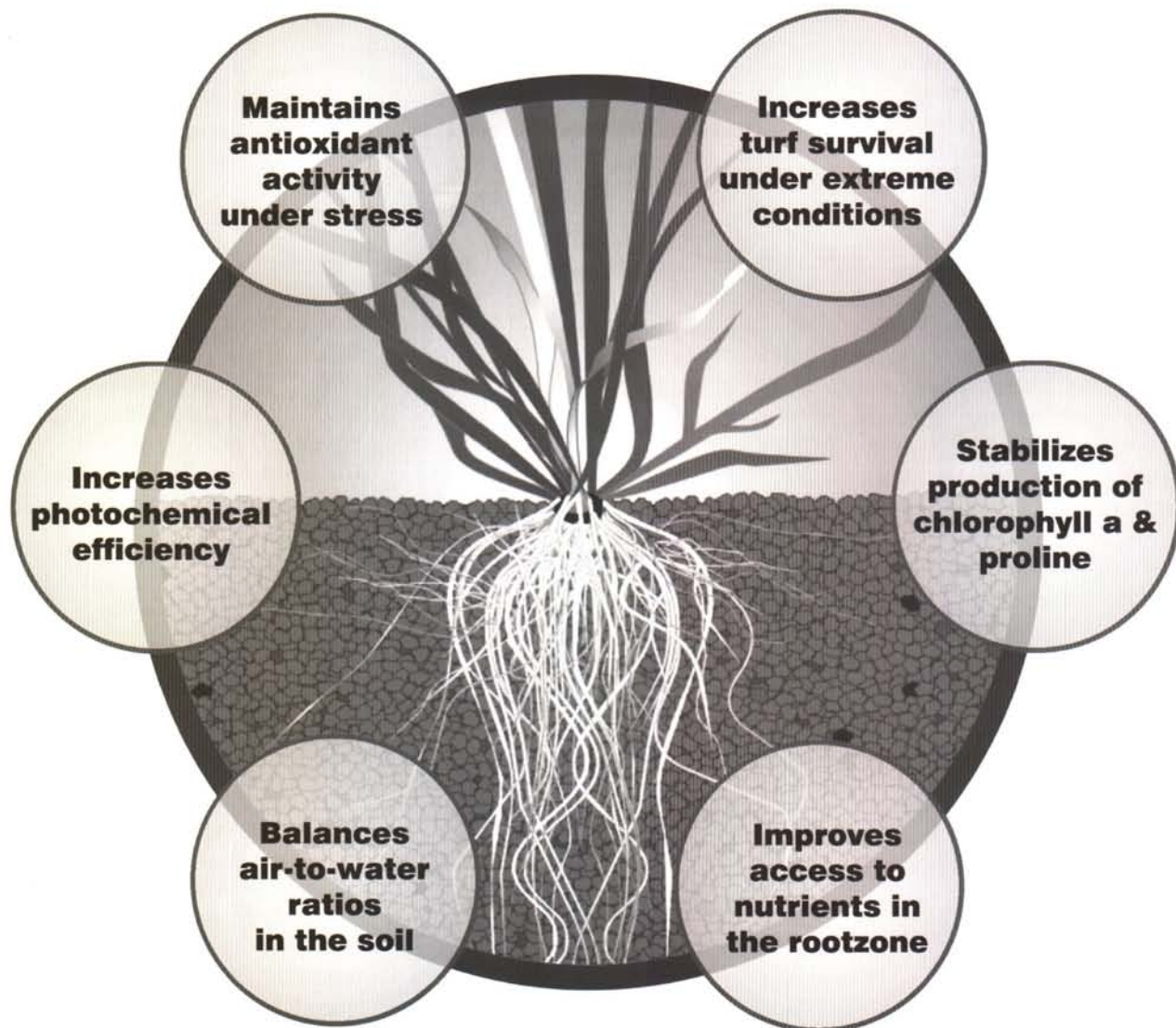
putting green management study conducted by Dr. Kussow at the University of Wisconsin-Madison between 1993-2000. Fig. 1 shows the greatest speed was obtained at 0.109 inch mowing height compared to 0.156 and 0.234 inch mowing heights. The most striking results, though, were the increases in green speed during the course of the summer even though mowing height stayed the same. The changes were greatest at the 0.109 inch mowing height and least at the 0.234 inch mowing height. Differences between soil type are evident in Fig. 1, with USGA greens often providing less speed, except when summer conditions and low mowing height stressed the turf in which case both soil types provided similar speeds (0.109 and 0.156 inch heights in August). By 31 August 1998, 'Penncross' putting green turf had 35.6 tillers/in² of ground when mowed at 0.109 inch compared to 39.1 and 41.8 tillers/in² when mowed at 0.156 and 0.234 inch heights, respectively. 'Providence' performed similarly to 'Penncross' while 'Crenshaw', developed specifically for summer stress conditions, only had reduced density when mowed at 0.109 inches (Kussow, 1998).

The reduced tiller density at the lower mowing heights allowed

AQUATROLS[®]

Revolution[®]

An essential tool for protecting your turf against stress.



**For more information contact Larry Lennert - Territory Manager:
(414) 545-0259 or larry.lennert@aquatrols.com**

AQUATROLS[®]

Phone (800) 257-7797 • Fax: (856) 537-6018
www.aquatrols.com

algae to develop (Fig. 2). By August, algae was present on approximately 80-90% of the putting green surfaces when the turf was mowed at 0.109 inch. Turf mowed at 0.156 inch height had less than 10% algae cover while no algae grew when turf was maintained at 0.234 inch height. Putting green quality was best at 0.156 inch height based on a combination of bentgrass cover and uniformity, amount of grain, and degree of upright growth.

The combination of low mowing height and summer stress also greatly decreased turf root mass in Kussow's study. As most turf managers know a well-developed, actively growing root system is vital to continued survival and development of the green turf appreciated by all golfers. Root mass declined by 50% between spring and summer when turf was mowed at 0.109 inches, 35% at 0.156 inches, and hardly at all at 0.234 inch height (Fig. 3). Especially disturbing was the lack of root recovery as the growing season drew to a close in October. These plants would have entered winter with diminished carbohydrate reserves and less chance of survival and reduced spring growth. Clearly summer stress has long term impacts when combined with excessively low mowing heights.

Even the new bentgrasses marketed for low mowing height conditions such as the Penn A and G series perform better at 0.156 inch height compared to 0.125 inch (Bruneau et al., 2001). Cultivars such as 'G-6' are still susceptible to summer stress as shown in Fig. 4 which compares summer turf quality to turf quality averaged over the entire year. Just as disturbing is the obvious importance of fungicide applications for maintaining putting greens: turf quality was markedly reduced in the absence of preventive fungicide applications regardless of mowing

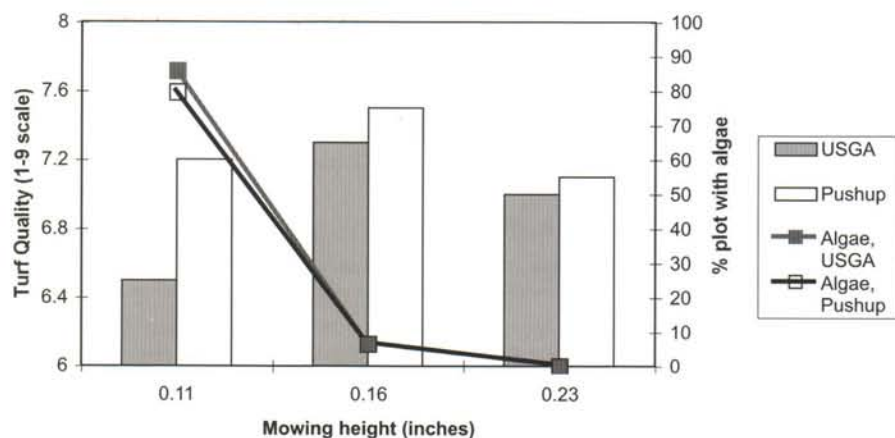


Fig. 2. Effect of mowing height on turf quality and algae development on a Penncross putting green, Madison, WI (after Kussow, 1998). Bars show turf quality; the two lines show the amount of algae present at each mowing height.

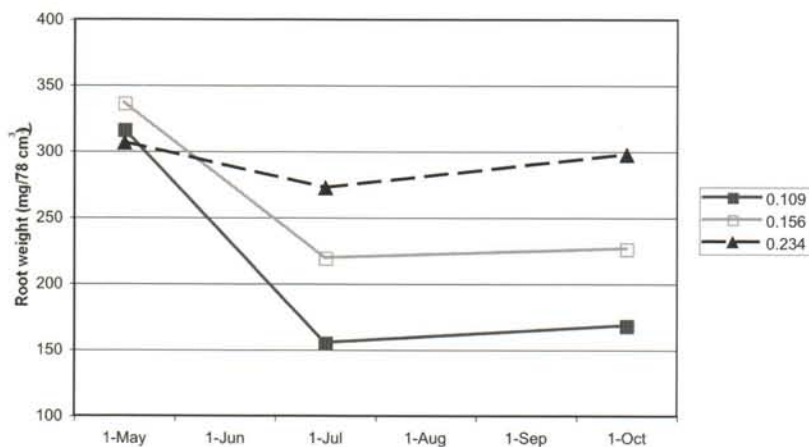


Fig. 3. Summer stress decreases 'Penncross' creeping bentgrass root weight depending on mowing height, Madison, WI (after Kussow, 1998).

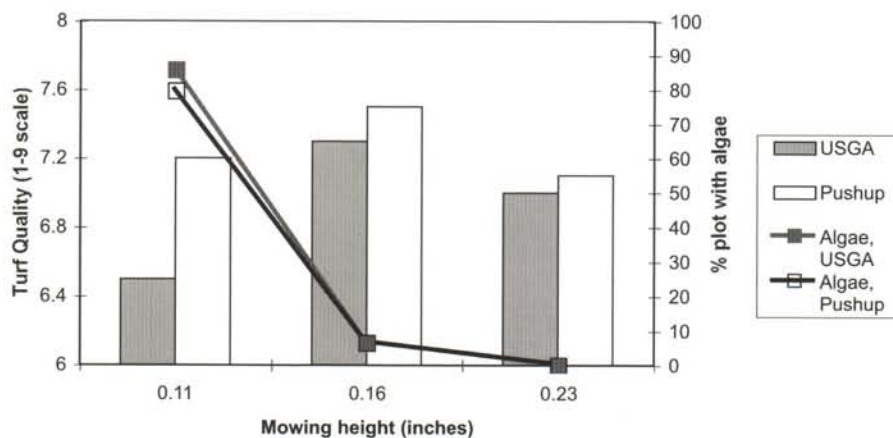


Fig. 4. Quality of 'G-6' creeping bentgrass dependent on mowing height, time of season, and preventive fungicide applications, Pinehurst, NC (after Bruneau et al., 2001).

WGCSA Members - We're Here For *You!*

*Proud members and supporters the WGCSA
for over 20 years!*

Quality Products & Exceptional Service

- ✓ Fines Free™ Topdressing
- ✓ North Face™ Bunker Sand
- ✓ 7:2:1 Blend
- ✓ Divot Repair
- ✓ Custom Mixes
- ✓ Cart Path Granite
- ✓ Boulders & Cobbles
- ✓ Best™ Bunker Sand
- ✓ Sand Storage
- ✓ Curbing
- ✓ Complimentary Testing

Please call us today to schedule a
site visit or receive pricing.



715-258-8566

www.waupacasand.com

height. Of 19 cultivars tested, including four of the Penn A and G series, all had turf quality similar to Penncross in the absence of fungicide applications (Bruneau et al., 2001). Unless golfer expectations change it is unlikely the industry will ever be able to provide acceptable quality putting green turf at mowing heights below 0.156-0.25 inch without fungicides. The only hope might be if multigenic (i.e., multiple genes) resistance for all common diseases can be bred into turf cultivars. Such efforts will be costly and require many years, though gene maps being developed by researchers like Dr. Jung at the University of Wisconsin-Madison and Drs. Scott Warnke and Reed Barker at the United States Department of Agriculture will facilitate breeding efforts.

Balancing mowing height and golfer demand (conclusion)

The driving force behind the push for increasingly lower mowing heights is apparently golfer demand, at least from key individuals. Lower mowing heights undoubtedly decrease turf quality by increasing the potential for algal or moss invasion and turf death from various environmental stresses. Summer heat stress may precondition turf to fail in the winter even if it survives the summer.

Maintaining a consistent putting green speed can be challenging. As seen in Fig. 1, speeds change over the summer even when mowing height is kept constant because of decreasing turf density and development. Green speed change is least noticed at the now unacceptably high mowing height of .234 inches, probably because this is close to the optimal cutting height range for creeping bentgrass and the turf is not severely stressed.

A mowing height of 0.156 inches seems to provide a balance between turf quality and inputs. Even the new A and G series per-

form better at .156 inches than at lower mowing heights. Data from Bruneau et al. (2001) clearly show the need for fungicide especially at lower mowing heights. The data discussed here are food for thought as we continue to balance current and likely regulations on fungicides, water use, and possibly turf management changes due to rising fuel costs. In short, the low mowing heights of today are simply not suitable to a low input, environmentally sustainable golf course. Few superintendents I know would challenge the concept of increasing mowing heights if golfers would accept less green speed but such a concept will need to gain ground through bodies like the PGA and Wisconsin State Golf Association before reality can be achieved.

References

Bruneau, A.H., C.A. Bigelow, R.J. Cooper, and D.C. Bowman. 2001. Performance of creeping bentgrass cultivars maintained at two mowing heights and

under two fungicide regimes in North Carolina. *Int. Turfgrass Soc. Res. J.* 9:835-841.

Casler, M.D., and R.R. Duncan. 2003. Origins of the turfgrasses. *In* M.D. Casler and R.R.

Duncan (ed.) *Turfgrass biology, genetics and breeding*. John Wiley & Sons, Inc., Hoboken, NJ.

Jones, H.G. 1992. *Plants and microclimate: a quantitative approach to environmental plant physiology*, 2nd ed. University Press, Cambridge, Great Britain.

Kussow, W. 1998. *Putting Green Management Systems*. Wisc. Turf Res. Reports XV:85-93.

McCarty, B., G. Landry, Jr., and A.R. Mazur. *Turfgrasses*. pp. 3-44. *In* L.B. McCarty (ed.) *Best golf course management practices*. Prentice-Hall, Upper Saddle River, NJ.

Turgeon, A.J. 1996. *Turfgrass management*, 4th ed. Prentice-Hall, Englewood Cliffs, NJ. ♣

SOD

grown on Irrigated Sand

Try our Sand Based Kentucky Bluegrass, Bentgrass and Fine Fescue Sod all grown under Fertigation to give you the highest quality with the least amount of root stress and soil incompatibility. Excellent drainage.

Call us for current delivered pricing to your location.

Robert H. Heath Farms Inc.

14531 1st Ave

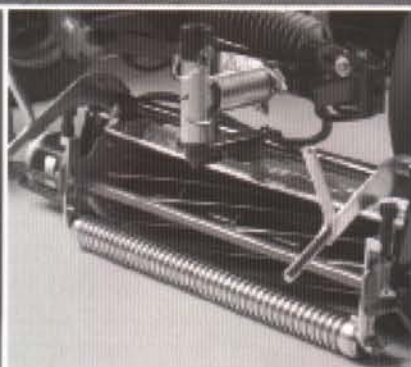
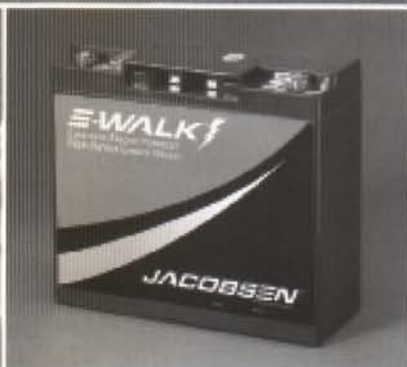
Coloma, WI 54930

Phone: 715-228-4106 • Fax: 715-228-4107

Email: heath@uniontel.net



No fuel. No fumes. No noise.



The Jacobsen E-Walk™ and E-Plex™ electric, precision-cut greens mowers.

Revolutionary, ultra-quiet walk-behind and triplex greens mowers deliver tournament quality results without uttering a sound. It's a perfect solution for early morning maintenance near homes along the fairways and next to greens.

There's no gas to spill, no hydraulic fluids to leak, no emissions and best of all, no noise. And the E-Plex and E-Walk costs only pennies a day to operate thanks to a convenient rechargeable battery pack.

Whether you choose the E-Walk with a 22 inch cutting width or the E-Plex with its 62 inch cutting width you'll be getting an 80% parts commonality with other quality Jacobsen greens mowers. Plus you get the industry's best warranty programs and parts access from CustomerOne™.

For a free demonstration of the E-Walk and E-Plex greens mowers or the other Jacobsen equipment come see us or give us a call.



**Get easy payments on equipment, parts and service.
Apply for the Jacobsen Card at your dealer today!**



JACOBSEN
A Textron Company

Jacobsen, A Textron Company
www.jacobsen.com

Wisconsin Turf Equipment Corp.
1917 W Court St • Janesville, WI 53547
1-(800) 443-1840
turf@jvl.net • wisconsinturf.com