

Table 2. Efficacy of fungicides and tank mixtures for reducing dollar spot severity at OJ Noer, Big Foot CC and Milwaukee CC in 2005.

Treatment	Rate	OJ Noer ^a		Big Foot CC ^a		Milwaukee CC ^b	
		Aug 4 ^c	Aug 30 ^d	Jul 29 ^c	Aug 26 ^d	Jul 28 ^c	Aug 26 ^d
1 Non-treated control		28.3	56.3 a	12.5	107.0a	71.8	15.0bc
2 Chipco 26GT	4 FL OZ/M	47.3	0.0d	25.5	0.8e	56.3	5.0cd
3 Chipco 26GT	2 FL OZ/M	45.0	1.5d	17.8	7.0e	68.8	5.0cd
4 Emerald	0.18 OZ/M	43.3	0.5d	7.5	0.0e	67.5	0.0d
5 Banner Maxx	2 FL OZ/M	42.3	4.5cd	54.3	2.0e	50.0	0.0d
6 Banner Maxx	0.5 FL OZ/M	31.5	8.8cd	10.3	23.5de	47.5	5.0cd
7 Spotrete	5 OZ/M	32.5	38.8b	31.3	69.0a-d	66.3	21.3b
8 3336F	4 FL OZ/M	22.8	14.5cd	27.3	85.3ab	67.5	31.3a
9 Curalan EG	1 OZ/M	14.5	0.3d	25.5	0.3e	53.8	2.5d
10 Turfcide 400	3 FL OZ/M	17.3	25.3bc	19.0	79.0abc	56.3	21.3b
11 Fore Rainshield	8 OZ/M	8.8	15.3bc	17.5	60.5bcd	57.5	30.0a
12 Daconil Ultrex	5 OZ/M	19.5	0.0d	25.8	0.8e	50.0	3.8cd
13 Daconil Ultrex	1.8 OZ/M	18.8	14.5cd	36.3	39.3cde	76.3	7.5cd
14 Rubigan AS	1.5 FL OZ/M	15.8	11.0cd	22.0	27.8de	52.5	5.0cd
15 Eagle	2.4 FL OZ/M	10.3	2.0d	26.3	7.0e	50.0	0.0d
16 Lynx	2 FL OZ/M	17.3	0.3d	18.8	1.8e	51.3	0.0d
17 Bayleton	1 OZ/M	9.0	0.3d	36.3	1.3e	48.8	1.3d
18 Bayleton	0.25 OZ/M	30.8	6.5cd	43.8	32.5de	61.3	6.3cd
19 Banner MAXX	2 FL OZ/M	10.8	0.0d	66.8	0.0e	62.5	0.0d
20 Chipco 26GT	4 FL OZ/M	16.3	0.3d	27.5	0.3e	55.0	0.0d
21 Banner MAXX	0.5 FL OZ/M	27.0	0.0d	17.5	0.0e	61.3	0.0d
22 Curalan EG	1 OZ/M	7.3	0.0d	40.3	0.3e	52.5	0.0d
23 Banner MAXX	2 FL OZ/M	14.8	0.0d	22.0	0.0e	65.0	0.0d
24 Daconil Ultrex	5 OZ/M	18.5	3.8cd	14.0	9.0e	73.8	0.0d
25 Banner MAXX	0.5 FL OZ/M	15.5	0.3d	36.5	0.0e	48.8	0.0d
26 Bayleton	1 OZ/M	23.8	0.5d	28.3	8.3e	71.3	0.0d
Banner MAXX	0.5 FL OZ/M						
Bayleton	0.25 OZ/M						

^a Number of dollar spot infection centers (DSIC's, 2-inch diameter) per 3 x 5 ft plot.

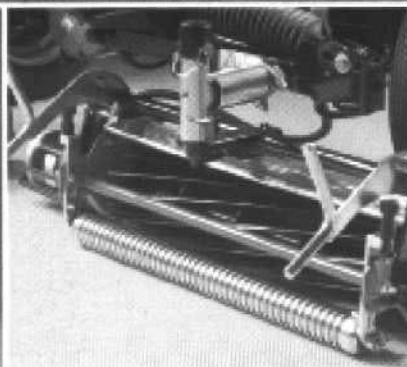
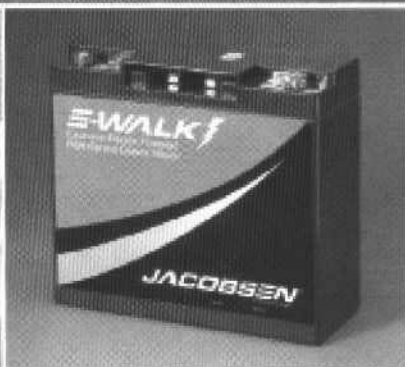
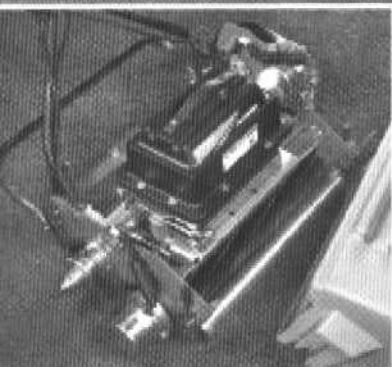
^b The percent dollar spot disease per 3 x 5 ft plot.

^c Initial dollar spot severity at the time of first application of treatments

^d Dollar spot severity two weeks after the second fungicide treatment and four weeks after the study began.



No fuel. No fumes. No noise.



The Jacobsen E-Walk™ and E-Plex™ electric, precision-cut greens mowers.

Revolutionary, ultra-quiet walk-behind and triplex greens mowers deliver tournament quality results without uttering a sound. It's a perfect solution for early morning maintenance near homes along the fairways and next to greens.

There's no gas to spill, no hydraulic fluids to leak, no emissions and best of all, no noise. And the E-Plex and E-Walk costs only pennies a day to operate thanks to a convenient rechargeable battery pack.

Whether you choose the E-Walk with a 22 inch cutting width or the E-Plex with its 62 inch cutting width you'll be getting an 80% parts commonality with other quality Jacobsen greens mowers. Plus you get the industry's best warranty programs and parts access from CustomerOne™.

For a free demonstration of the E-Walk and E-Plex greens mowers or the other Jacobsen equipment come see us or give us a call.



**Get easy payments on equipment, parts and service.
Apply for the Jacobsen Card at your dealer today!**

JACOBSEN
A Textron Company

Jacobsen, A Textron Company
www.jacobsen.com

Wisconsin Turf Equipment Corp.
1917 W Court St • Janesville, WI 53547
1-(800) 443-1840

turf@jvlnet.com • wisconsinturf.com

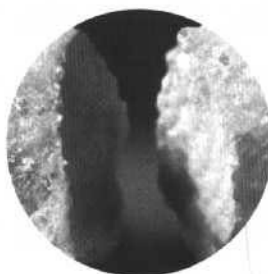
oz/M) (Table 2). Most demethylation inhibitor (DMI) fungicides had good control. Eagle 2.4 fl oz/1000 ft² (treatment 15) had an acceptable control but Bayleton 1 oz/1000 ft³ (treatment 17) had the best effect in this study. The iprodione (treatments 2 and 3) and the vincozlin (treatment 9) all significantly reduced the disease. Other fungicides showing excellent control were Lynx (treatment 16) and Emerald (treatment 4) as in the other locations. Various combinations of two different fungicides worked well. In some cases, the half rates of tank-mixed fungicides had the same excellent dollar spot control as the full rates. Examples of this would be the half rate Chipco 26GT/Banner MAXX tank-mix (treatment 20) and Curalan EG/Banner MAXX (treatment 22) and the full rate mix of the same products, treatment 19 and treatment 21, respectively.

At Big Foot CC where the disease pressure was heavy, most fungicide treatments significantly reduced dollar spot severity as compared with the non-treated control, but the half rates of single fungicides could not hold the disease (Table 2). DMI fungicides were variable on controlling the disease. Rubigan AS (treatment 14) did not keep the disease below 20 DSIC's per plot. High rate Banner MAXX (treatment 5), Eagle (treatment 15), and high rate Bayleton (treatment 17) worked the best among the DMI's tested. Among the contact fungicides, high rate Daconil Ultrex (treatment 12) consistently had the best control as at OJ Noer. Here again, the combination treatments were consistently effective. All of the full rate combinations, and the half rate of Banner MAXX/Chipco 26GT (treatment 20) and Banner MAXX/Curalan EG (treatment 22) had excellent control.

The trial conducted at Milwaukee CC was hampered by the rapid progression of the disease before our study. At the time of the first spraying the percent disease ranged from 25 to 85% over all plots (Table 2). Due to the very high initial disease pressure at Milwaukee CC, the treatments were evaluated using the percent disease instead of a spot count. The results were similar to those at OJ Noer and Big Foot CC. The tank-mixed fungicides continued to have excellent control and half-rate mixes performed just as well as full rate mixes. One thing of note at Milwaukee CC is that disease pressure seemed dramatically less in the second rating (Aug 26) than the first rating (July 28). On the non-treated control plots, the disease rating was initially 71.8% on July 28 and became reduced to 15.0% on August 26.

The half rates of single fungicides worked well at the moderate disease pressure but broke down under the heavy disease pressure. In all of our field locations, the low rate tank mixtures continued to hold up as

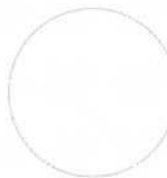
well as the high rate combinations. What are the best fungicides of reducing dollar spot severity in our study? Among the treatments tested, treatments 2, 4, 9, 12, 16, 17, 19, 20, 21, 22, 23, and 25 consistently had excellent control of dollar spot in all three locations. Preventative fungicide applications are always preferable for dollar spot management, but dollar spot outbreaks are unavoidable because of changing environmental conditions and the persistent nature of this pathogen. Because of this, a curative fungicide approach is an important thing to keep in mind. These field evaluations of various fungicides commercially available in Wisconsin will provide valuable guidance to local turfgrass managers for dollar spot management. We would like to thank two superintendents, Pat Sisk and Jim Knulty, for their participation, not only for maintaining the plots, but also rating the disease severity. Their cooperative efforts were essential in carrying out this study. ♣



How can something that lasts so long...work so fast?

With methylene urea and sulfate of ammonia combined in each tiny granule, MESA works immediately to provide a rich green color. And by slowly releasing its nitrogen, MESA lasts considerably longer than sulfur-coated urea without causing unwanted flush growth.

Extended-release MESA greens faster and lasts longer than SCU.



So protect your turf with fast acting, long lasting MESA. Look for Lebanon Pro 25-2-5 with 51% MESA. For more information, see your LebanonTurf Distributor, or call 1-800-233-0628. Or, visit www.LebanonTurf.com.

LebanonTurf

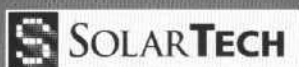


IR Ingersoll-Rand Milwaukee

Meeting the Needs of Wisconsin's Construction Industries



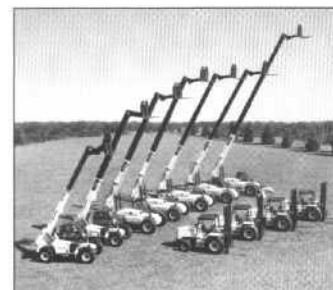
Light Tower



Message & Arrow Boards



Soil & Asphalt Compactor



Forklifts:
Complete Inventory



Club Car Utility Vehicle with plow & cab



Generators from
G20 to G575



Air Compressors
up to 1600 CFM

Rentals • Sales • Parts • Service

- Soil and Asphalt Compactors
- Air Tools
- Hoist
- Generators
- Message & Arrow Boards
- Compressors
- Light Towers
- Rock Drills
- Fork Lifts
- Utility Vehicles



DIRECT[™]

On-Site Construction Equipment Service

Ingersoll Rand Equipment Service Company

1-800-338-5436

12311 W. Silver Spring Dr. • Milwaukee, WI 53225

www.irmil.com



EXPO 2006 “A Crowd Pleaser”

By **Tom Schwab**, O.J. Noer Turfgrass Research and Education Facility, University of Wisconsin-Madison

Midwest turf managers got a treat on January 10th and 11th, when they attended the revamped Wisconsin Turfgrass and Greenscape EXPO. Attendance numbered 268 individuals from all walks of turf management. Local speakers provided the majority of education, along with several experts from Minnesota, Illinois, and Rhode Island who all gave enlightening presentations. The weather was even a treat as attendees enjoyed some rare blue skies and temperatures in the 40s.

The EXPO committee can't take the credit for the good weather but they can for finding excellent education. They decided to incorporate more local speakers into this year's show because of all the lessons learned in Wisconsin from this brutal year of ice damage in the spring and drought conditions during the summer. Jerry Kershasky from Westmoor

Country Club described the round-table portion of the golf section best. He said it was similar to the Wisconsin Golf Turf Symposium where one subject is chosen and intensely discussed to find all the answers. The panel of local experts in the round-table included Mike Handrich from Racine CC, Rod Johnson from Sheboygan Pine Hills, Gary Tanko of Sentry World, and Pat Sisk of Milwaukee CC.

Local expertise was also evident by our roster of UW-Madison turf professors who talked about everything from mowing heights, to changing the makeup of root-zones, and controlling prominent insect and disease problems. UW professors additionally talked about tree health, remote sensing

tools, and the new NR151 technical standard that will soon affect everyone who manages more than 5 acres of turf.

Sports field managers benefited from the local expertise of Raechal Volkening from the Milwaukee Brewers organization, Chris Brindley from UW-Stevens Point, Dan Wyatt from UW-Madison, Alan Johnson from the Packers, and several state high school field managers. They talked about managing fields with budgets that are shrinking, maintenance of the new increasingly popular infill artificial turf surfaces, and developing creative internship and volunteer programs.

Lawn and landscape professionals learned about immigration laws, invasive species initiatives,

Steuer
TURF FARM

Growers of
'Quality'
Bluegrass

Mineral & Peat

Pickup or Delivery
414-425-7767








Ed Witkowski
Mike Kozlowski

Full Line of Turf Products
Chemicals
Competitive Pricing
New Product Information
Satisfaction Guaranteed

805 Ela Avenue
Waterford, WI 53185
262-534-3334 • Fax 262-534-2990



BOB F.

BRETT

CHRISTINE

JEREMY

KARI

BOB M.

SHARON



**SAME GREAT
PEOPLE.
SAME GREAT
SERVICE.
MORE
EXCELLENT
PRODUCTS
THAN EVER.**

**FINES FREE
TOPDRESSING®**

**NORTH FACE
BUNKER SAND®**

7:2:1® BLEND

WAUPACA SAND AND SOLUTIONS

CART PATH GRANITE

NITROGREEN SAND®

BEST BUNKER SAND

CUSTOM MIXES

info@waupacasand.com

(715) 258-8566

woody ornamental and perennial flower care, and much more. EXPO had something for everyone that works with turf including taking care of the other plants we are responsible for.

Turf equipment technicians greatly benefited from EXPO '06, with the very popular Turf Equipment Technician's Workshop that was held on the first day. Nearly 30 mechanics attended to learn everything about reel mowers including maintenance, rebuilding, grinding, setup, and problem diagnosis.

Last but not least was the trade show, which was reworked this year to add more punch. It took place over fewer hours than in past years, but those hours were more productive for both the exhibitors and attendees. The trade show was held on the first day and it was strictly trade-show-only hours for the whole time it was open. This allowed exhibitors undistracted time to display and talk about their wares without conflicts from educational presentations. A listing of the 37 EXPO exhibitors is shown on page 50 as a reference. They

help to bring you the great education of EXPO, so please return the favor by giving them a chance for your 2006 business.

The exhibitors likewise helped sponsor the exciting raffle that was part of EXPO this year. Just ask Doug DeVries from Reid Municipal Golf Course how exciting it was. Doug won the Grand Prize \$1,000 travel voucher. Other prizes included a pair of Badger men's basketball tickets donated by John Powless, a Home Depot Gift Card from UAP, four Chicago Blackhawks hockey tickets



Dr. John Stier gave several informative presentations at this year's EXPO.



Doug DeVries displays his \$1,000 Grand Prize raffle voucher.



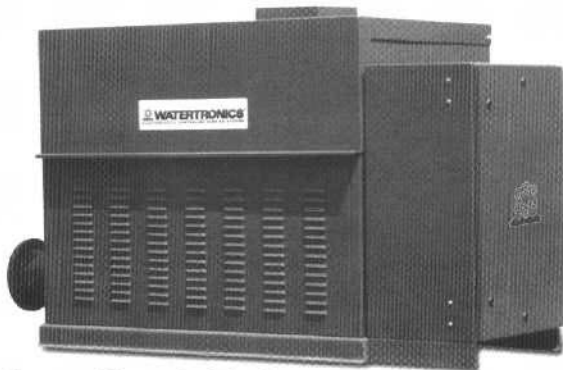
Dean Musbach presents Reinders' annual Daconil promotion check to WTA president Rich Riggs. This promotion has generously given nearly \$109,000 towards turf research in Wisconsin since its inception.



EXPO organizer and raffle prize drawer Audra Anderson made several attendees' day by picking their lucky tickets.

WATERTRONICS®

Evolution Series

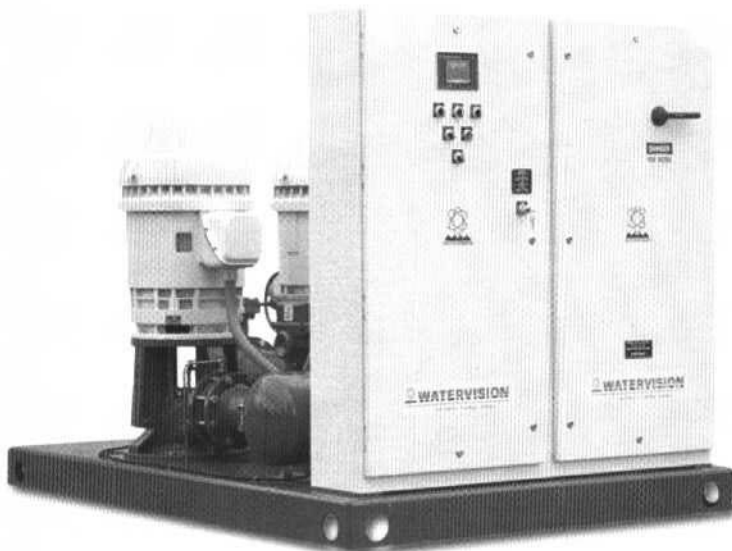


Super Sport - Turf

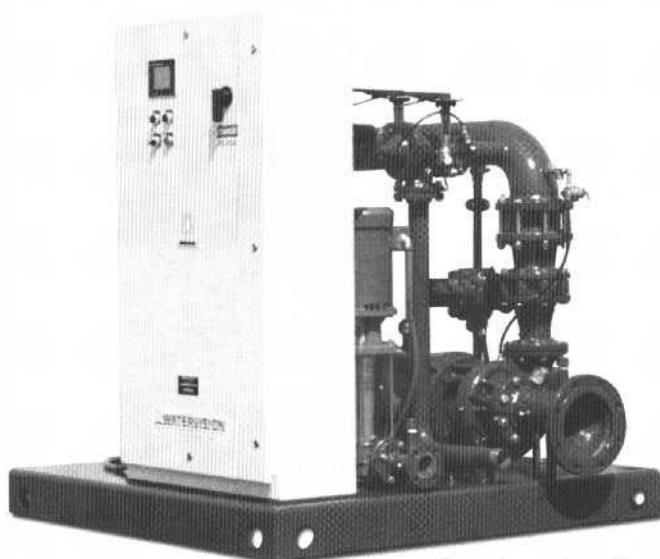
The "Evolution Series" pumping system is a proven concept from Watertronics that utilizes a VFD driven jockey/pressure maintenance pump and Electronic Butterfly Valve controlled main pump(s). This control system allows for VFD control of the pump that most benefits from it. Conventional VFD stations share one drive between all main pumps which can cause "across-line" start/stop surges.

Benefits and features of an Evolution Pump Station include:

- VFD driven jockey pump which efficiently performs dual duties of pressure maintenance, while serving as the primary supplier of incidental daytime syringing and hand watering up to 150 GPM.
- Additional pumps are individually pressure regulated with Watertronics' Electronic Butterfly Valve, ensuring surge-free starts and stops.
- Lower horsepower and smaller electrical in-rush of the VFD regulated jockey pump normally will not incur utility "time-of-day" penalties.
- Available with Watervision™ remote monitoring software and Pumplink™ irrigation control software interface.



Vertical Turbine



Horizontal Centrifugal

The "Evolution Series" control system is available on all Watertronics' Vertical Turbine, Horizontal Centrifugal, Super Sport Turf, and BlackMax™ Submerged pumping systems. Call a Watertronics' representative today and find out why our "Evolution Series" may be the best choice for your irrigation pumping system needs.

from Cleary Chemical, an Al Harris autographed Packers' jersey from Reinders, and a pair of Packers' tickets for next season donated by the Packers.

Many other awards were presented during EXPO. The luncheon banquet afforded time for the WTA to accept several donations to the Wisconsin Distinguished Graduate Fellowship. The Fellowship is a program that guarantees important Wisconsin turf research will be conducted indefinitely. Many UW-Madison turf students also received awards that were important to their more immediate future of paying

for books and tuition. The list of 2006 scholarship recipients and donators is listed below. The turf industry is stronger for the contributions from all these individuals.

The turf industry is likewise stronger because of all the great education of EXPO. Thanks go to all the educators, trade show participants, and attendees that continue to make EXPO one of the best turf meetings available. Everyone involved was especially pleased with this year's show.

2006 Wisconsin Turfgrass and Greenscape EXPO Research and Scholarship Recipients

Scholarship Donor

WGCSA/James R. Love Scholarship
 Chalet Nursery Scholarship
 J.W. Turf John Buck Scholarship
 Bayer Environmental Scholarship
 Spring Valley Turf Products Scholarship
 WTA Scholarship
 WTA Scholarship
 WTA Scholarship
 WTA Scholarship
 David Mergatroyd Memorial Scholarship

Recipient

Dan Lloyd
 Dan Lloyd
 William Kreuser
 Adam Moeller
 Shannon Barstow
 Steve Sartorius
 Brad DeBels
 Michael Boettcher
 Patrick Bastron
 Paul Nelson

Amount

\$1,500
 \$500
 \$1,000
 \$1,000
 \$600
 \$600
 \$600
 \$600
 \$600
 \$500

Turf Research Donor

DHD Tree Products
 Horst/ Aquatrols
 WI Turf
 Reinders/ Daconil

Recipient

Distinguished Graduate Fellowship
 Distinguished Graduate Fellowship
 Distinguished Graduate Fellowship
 Distinguished Graduate Fellowship

Amount

\$1,000
 \$1,700
 \$1,250
 \$4,750



The UW-Madison turf student scholarship recipients pictured with the scholarship and research donators.

2006 Wisconsin Turfgrass and Greenscape EXPO Exhibitors

The Andersons

David Louttit
219-662-1014
Fertilizers, fertilizer combination products, spreaders.

BASF

David Oberlet
651-681-8050

Badger Turf & Grounds Club

Bayer

Kerry Anderson
847-910-3130

Cleary Chemical

Tim Keating 630-885-3130
Turf & ornamental plant protectants.

Cotree Sprayer & Equipment Co

Kevin White 920-356-0121
Custom built sprayers, parts and service.

DHD Tree Products

Dan Quast 920-386-9000
Fertilizer, plant protectants, tree supplies, greens roller.

Dow AgroSciences

Beth Whitehouse
608-216-5066
Ornamental and technical products. Offers high-quality insecticides, herbicides and fungicides to professionals in lawn care, golf course and nursery business.

Ero-Tex

Scott Bordeau
262-387-1934
Erosion control & turf reinforcement mats, bunker liners, winter green protection system.

Gempler's

Kim Karls 608-662-3301
Handpicked commercial grade supplies direct to your dock or doorstep.

Herfort Norby G C Architects

Kevin Norby 952-942-0266
Golf course design, practice facilities, irrigation, renovations, restorations.

Horst Distributing

Grant Mortimer
920-849-2341
Turf maintenance equipment and supplies.

Lesco

Robert Wasser
262-206-0775
Fertilizer, seed, control products, equipment and golf accessories.

Midwest Turf Products

Cubby O'Brien
630-742-5124
Plant protectants, fertilizers & accessories for the turf professional.

Milorganite

Jaime Staufenbeil
414-221-6816
Organic nitrogen fertilizer.

National Golf Graphics

Peter Meyer 608-222-9363
Golf course signage, accessories, flags & on course drinking water systems.

National Seed

Dan Biddick
208-890-4453
Seed, fertilizer, mulch, erosion blankets.

North Pacific Ag Products

Darren MacFarlane
800-461-3477

Olds Seed Solutions

Chris Wendorf
608-249-9291
Seed and custom seed blends.

Paul's Turf & Tree Nursery

Paul Huggett
608-655-3600
Sod and tree needs.

Pendelton Turf Supply

Ed Witkowski
262-534-3334
Seed, fertilizer, pesticides, tee and green supplies.

ProGreen Plus

Mike Akin
414-751-1113
Fertilizers, aquatic supplies, seed and chemicals.

ProSource One

Conrad Stynchula
608-249-8500
Distributor of plant protectants, fertilizer and seed to the turfgrass market.

Rain Now

Paul Roessler
608-850-7246
Above ground watering systems

Reinders

Dean Musbach
262-786-3300
Distributor of commercial turf equipment, fertilizer, grass seed, herbicides, fungicides, irrigation products, landscape supplies and ice control salt.

Riesterer & Schnell / Green Image

Deanna Boldrey
920-751-8787
John Deere turf equipment and One Source supplies.

Sports Turf Specialists

Terry Donahoe
651-775-0002

Syngenta

Steve Abler 920-860-6374
A complete portfolio of turf care products.

Tiziani Xcite

Mike Schaefer
262-370-5208
Turf, commercial and rough utility vehicles.

UAP Professional Products

Shawn Hilliard
608-516-4006
Pesticides, fertilizers and seed.

Waupaca Sand & Solutions

Brett Grams
715-258-8566
Supplier of quality topdressings, sand mixes, decorative stone, compost to sports fields and golf courses for over 25 years.

Wisconsin Turf Equipment

Gary Huenerberg
608-752-8766
Full line of turf maintenance equipment and supplies featuring, Jacobsen, Smithco, Turfco, National, Jacklin Seed, Lebanon fertilizer & Pro's Choice. Contract deep-tine aerification.

Wisconsin Sports Turf Managers

Brett Grams 715-258-8566
Committed to enhancing the professionalism of athletic field managers in Wisconsin.

Wisconsin Turfgrass Association

Audra Anderson
608-845-6536
Dedicated to better turf through research and education.

Wolosek Landscaping

Dan Wolosek
715-423-3909
Manufacturing golf course topdressing sand.

Yamaha Golf Car

Anne Kloss 608-527-4348
Golf Car Sales

