

from one end of the course to the other. "We bought the material and asked a lot of questions," Gary recalls. "It took a lot of time to do this on our own."

During the 17 years they owned the course they also planted approximately 1,000 trees. "It was pretty barren when we got here—probably only 30 trees on the course," Gary says. "We planted trees to give the course some direction and definition. It really made it look more like a golf course."

They also built and rebuilt many greens and tees, put in bunkers, and laid a couple of miles of tile because many holes on the course were in low areas. "Probably one thing unique to the course - we had a flood control system," Gary points out. "All the water on the course from the ponds and creek were tied together. We had a dam on the course where we picked up the water and pushed it out into the marsh which was across the road from us. Our pumping system was capable of pumping 30,000 gallons of water per minute—the same pumps that cranberry growers use to flood their fields."

Superintendents help out...

Gary was glad for the network of superintendents, and he joined WGCSA in 1983. He especially remembers the help he received from superintendent Roger

Bell who was at North Shore Country Club in Menasha at the time, just 15 miles from Brillion. "I got to know Roger real well. He helped us out a lot," Gary recalls.

"Superintendents are always more than willing to help each other with problems," he continues. "If you call them up, they'll give you whatever help you need with whatever issue you're dealing with. Roger helped me in the early 1980s when I had some pythium on our greens. I didn't know what it was at the time because it had never been this far north. I went to see Roger and, fortunately or unfortunately, he had the same thing. He knew it was pythium and he gave me some Terramec SP to spray on it which controlled the pythium. I was also first in line to buy Roger's used equipment each year."

Since Deer Run was not a destination course and wasn't close to any urban area (Brillion is a town of 3,000), the Huenerbergs needed something to act as a draw, to keep customers coming back. They chose to maintain optimal playing conditions and to advertise heavily in Appleton (20 miles away), Manitowoc (25 miles away) and Green Bay (30 miles away). "We would also draw somewhat from Fond du Lac which was kind of unusual for a 9-hole course," Gary adds.

"We did fine with just 9 holes," he continues. "Of

COUNTRY CLUB TURF AND GREENS



- Premium Pencross Bentgrass SOD
- Washed and Unwashed available
- Renovations, additions planned?? Short on Labor??

WE WILL INSTALL YOUR SOD FOR YOU!

Serving the Superintendents in the five state area since 1987.

FREE delivery with purchase over 500 yards

.81 cents per square foot or \$7.25 per square yard

*Call Vic Peterson with questions at (952) 446-8222
or e-mail order requests to vicp@countryclubturf.com*

course, through the years people always asked us if we were going to expand to 18. We kicked the idea around many times and actually had land available to do it. We looked at the cost. We did a lot of talking to other golf course owners who went from 9 to 18 holes. It was a huge investment. The way our course was situated, we probably would have had to put up a new club house. And we were still in a town of 3,000 people and a county (Calumet) with more cows than people. We stayed at 9."

New group for course owners...

Networking with other golf course owners was important to Gary - so important that he and five other owners started a new organization, Golf Course Owners of Wisconsin. "It's an organization for the privately owned public golf courses in the state," Gary explains. "We started it in the early 1980s. The six of us did a lot of traveling in those early days to sign up new members. Now the group represents more than 150 owners in four different sections of the state.

"Since golf course owners have similar goals, our reason for getting together was to share ideas and help each other out," Gary continues. "I'm kind of

proud of that organization. There was nothing like it in Wisconsin until we decided to get this going."

Private owners have a unique set of challenges and opportunities. "If you're the owner and you decide to do something, you can do it today," Gary points out. "You don't have to wait for a committee. It's your investment, and it's your livelihood on the line. Management is simpler. But there are good years and bad years no matter how the course is owned or managed."

After 17 years of owning and improving Deer Run, the Huenerbergs sold it in 1996. "We weren't really looking to sell the course," Gary explains. "It was our long-range plan that my wife, Karol, and I would take over the course when my parents, Elwood and Muriel, were at retirement age. Then someone approached us and made an offer. We came to an agreement and sold it.

"I considered it as a chance to pursue a different career path," Gary continues. "I had enjoyed running the golf course, but I was looking for something that would give me more time for family than running your own business does. Since we had a small 9-hole course, we were involved with everything from working on the course during the day to working in the club house at

A Continuing Tradition of Quality
in Golf Course Renovation
Restoration and New
Construction



[608] 836-7041

FAX: [608] 831-4236

WWW.BRUCEGOLF.COM

night, plus the bookwork and everything else. At the time we sold I didn't know *what* I was going to do, but I knew I'd come up with something."

Sales at Wisconsin Turf...

Through the golf course network, Gary learned of an opening at Wisconsin Turf Equipment Corporation in Janesville. He applied for a job as a sales rep for southwestern Wisconsin, and he got it. "For my first venture into working for somebody else, I couldn't have picked a better company," Gary believes. "Wisconsin Turf has been run by the Christopherson family since 1956. It's a large company with a small family atmosphere. I was hired by Lyle Christopherson and Curt Larson, who worked there for 39 years and is known by everyone in the turf business. The transition was smooth."

As a sales rep, Gary's territory ran up to LaCrosse, over to Wisconsin Rapids, and south. He was out on the road five days a week giving equipment demonstrations and talking to superintendents. He drove about 45,000 miles a year.

"One of my worries when I went into sales was that I wouldn't be able to stay current with the knowledge that a superintendent needs," Gary points out. "I found that I learn a lot more by being out there talking

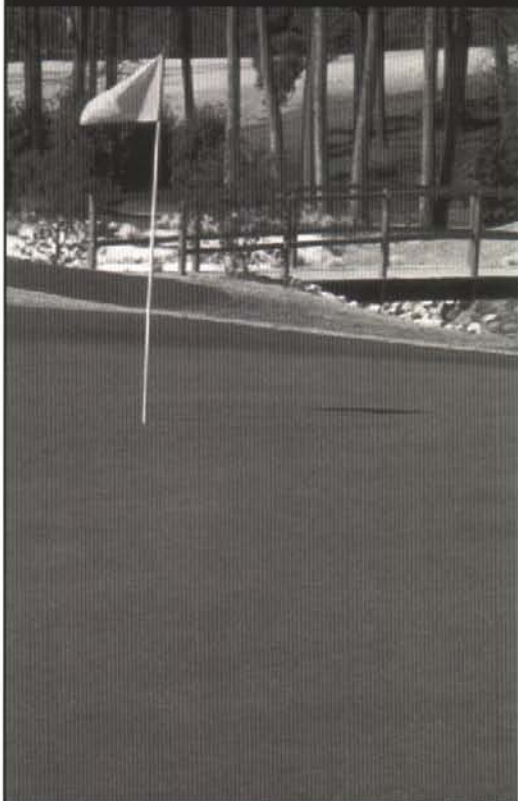
with the guys, seeing what they're doing, seeing the good ideas that they have. I've learned more being out on the road in the last five years than I learned in the previous 17 years working on the same course. If you're at six, seven, eight golf courses in a day, you see a lot of things."

For his work, Gary was honored with a Jacobson Pacesetter Award in 2001. The award recognizes outstanding sales performance and total customer service. His award was for the best rep in the Midwest, the Dakotas, and all of Canada. "It was my third year at the company. It was an honor to be recognized," Gary admits.

Director of sales and marketing...

On October 1, Gary was promoted to director of sales and marketing - a newly created position at Wisconsin Turf. "I'm writing the book as I go," Gary says of his new duties. "Actually, a lot of what I do I was already doing as a sales rep. I was picking up some of the things that needed to be done, like coordinating demonstrations with the other salesmen and dealing with some of our vendors.

"Our main product line is Jacobson, Cushman and Ryan," Gary explains. "We also work with many secondary companies, like Smithco, Turfco, and National. I like to describe our company as carrying everything

Consider Primo MAXX® the turf's personal trainer.

Get your turf in top shape. Primo MAXX PGR makes turf thicker and stronger. Preparing it for summer's toughest challenges, like heat, drought, and disease. Not to mention everyday wear and tear. So it can be in prime condition all season long.



Contact Jim Shone at 1-708-217-8509 to learn more
about Syngenta products.

Important: Always read and follow label instructions before buying or using this product.
©2002 Syngenta. Syngenta Professional Products, Greensboro, NC 27419. MAXX®, Primo®, and the Syngenta logo
are trademarks of a Syngenta Group Company.

www.syngentaprofessionalproducts.com



WATERTRONICS®

Evolution Series



Super Sport - Turf

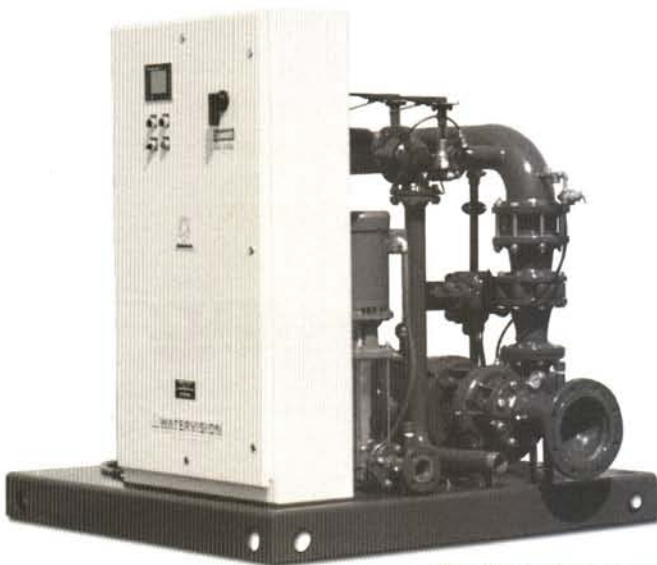
The "Evolution Series" pumping system is a proven concept from Watertronics that utilizes a VFD driven jockey/pressure maintenance pump and Electronic Butterfly Valve controlled main pump(s). This control system allows for VFD control of the pump that most benefits from it. Conventional VFD stations share one drive between all main pumps which can cause "across-line" start/stop surges.

Benefits and features of an Evolution Pump Station include:

- VFD driven jockey pump which efficiently performs dual duties of pressure maintenance, while serving as the primary supplier of incidental daytime syringing and hand watering up to 150 GPM.
- Additional pumps are individually pressure regulated with Watertronics' Electronic Butterfly Valve, ensuring surge-free starts and stops.
- Lower horsepower and smaller electrical in-rush of the VFD regulated jockey pump normally will not incur utility "time-of-day" penalties.
- Available with Watervision™ remote monitoring software and Pumplink™ irrigation control software interface.



Vertical Turbine



Horizontal Centrifugal

The "Evolution Series" control system is available on all Watertronics' Vertical Turbine, Horizontal Centrifugal, Super Sport Turf, and BlackMax™ Submerged pumping systems. Call a Watertronics' representative today and find out why our "Evolution Series" may be the best choice for your irrigation pumping system needs.



WATERTRONICS®
ELECTRONICALLY CONTROLLED PUMPING SYSTEMS

525 Industrial Drive, P.O. Box 530, Hartland, WI 53029-0530
Phone: 262-367-5000 • 800-356-6686 • Fax: 262-367-5551
Visit our website at: www.watertronics.com

you need for turf except irrigation. We have seed, we have fertilizer, we do custom aerification. We have everything you need."

Working with vendors, Gary looks at their new products and evaluates them as to whether or not Wisconsin Turf should carry them. When they do add new products, he determines how to market them and he introduces the sales staff to the new product. He also rides with sales reps on occasion to see how they're doing and to give them pointers.

His goals for the new job? "To continue to expand the company as far as new products," Gary answers. "There are constantly new companies coming up with equipment that makes the job easier for golf course superintendents. I want to get those products out to our customer base so they can give them a try and we can evaluate them.

"I also want to work more with the web site because that seems to be the first place people go if they're looking for something," Gary adds. "I'm thinking of adding a list of used equipment that we offer so superintendents can go to it for a quick reference."

Off the job, on the course...

When he's not working, Gary's biggest hobby is golf. "When we owned the course, I got to play maybe one

9-hole round a week," he recalls. "And when I was on the road as a sales rep, I didn't get to play much, either, even though I was on courses all week long."

He and his wife, Karol, are also very active in their Wisconsin Synod Lutheran churches - St. Matthew's now that they're in Janesville, and Trinity when they were in Brillion. Karol is a registered nurse specializing in IV therapy at Mercy Hospital in Janesville. She has always worked full-time as a nurse, even when they owned the golf course. "She helped with payroll and in the club house when we owned the course, but she always worked as a full-time nurse, too," Gary points out.

Gary and Karol have one son, Ryan, who is 16 years old. "He's very interested in the golf course business," Gary points out. "In fact, at this point his plan is to get a degree in turfgrass management and become a superintendent. When he was 4 years old he was my golf car man. He'd wash them and put them away. And he helped my dad and me a lot with irrigation at night."

If son Ryan follows through with his plans, he'll be a fourth generation superintendent. Sounds like a future *Personality Profile*, doesn't it? ♣

COLUMBIA ParCar 

Call for a free demonstration!
And to learn of our special WI course offers at
no cost or obligation!



Eagle Sponsor
of the Golf
Course Owners
of Wisconsin.

- Gas & Electric Golf Cars & Utility Vehicles
- New, Used and Reconditioned
- Full Sales and Service
- Additional Cars for Special Events
- Lease Financing Available

SALES & SERVICE

Madison, WI Reedsburg, WI
(608) 249-6600 (608) 524-8888
(800) 222-4653



Proudly Manufactured By
Wisconsin Craftsmen

BREATHE NEW LIFE INTO YOUR TIRED TURF EQUIPMENT.

KOHLER. Repower Kits get your equipment performing like the day you bought it – maybe even better.



KOHLER REPOWER KITS:

- **Are cost effective.**
- **Deliver advanced engine performance.**
- **Provide worldwide customer support.**
- **Offer unconditional Kohler Quality.**
- **Are easy to install.**

**With Kohler Repower Kits,
your equipment isn't rebuilt...
It's reborn.**

For more information, call today.



KOHLERengines
BORN TO RUN™

Seek the innovation.™ Demand the power.™
www.kohlerengines.com 1-800-544-2444



Winter Turf EXPO Gets a Facelift

By Tom Schwab, O.J. Noer Turfgrass Research and Education Facility, University of Wisconsin-Madison

The Wisconsin Turfgrass and Greenscape EXPO 2004 is scheduled for January 5th, 6th, and 7th. The Marriott Madison West's hospitable convention center will again provide the location. The location and early January time slot are the same as past years, but that is where the similarities end. The EXPO planning committee did many interviews with attendees to see what they wanted in the show. Many of those suggestions will be implemented. Make sure you experience the ambitious changes for this year. Conference registration brochures will be mailed out in early-November.

There are so many important changes and I'll try to outline them here. One of the notable changes is we pumped-up the list of education by getting more big-name speakers. Those names include James Snow from the USGA and Dr. Harry Niemczyk, professor emeritus from The Ohio State University. Other big name speakers include Dr. James Beard, former professor from Michigan State and Texas A&M. Every golf course superintendent owns Dr. Beard's "Turf Management for Golf Courses!" And then there is former Green Bay Packer turned motivational speaker Blaise Winter who will give the keynote address. You won't need coffee that morning. Blaise radiates enough energy to motivate everyone in the crowd.

That names a few of the nationally renowned speakers coming to EXPO. There are so many more that will be just as educational, just not as nationally recognized. Those presenters will give information on everything from how to

winterize an irrigation system to controlling geese and other wildlife problems. There will be talks on new turf management findings from your UW turf researchers. Les Werner from the UW-Stevens Point will present information on chainsaw safety and tree pruning. And there will be so much more education.

A Speaker's Booth in the trade show area will be a new addition for this year. An area will be set aside in the exhibition hall where you will be able to talk individually with all the presenters. When not giving presentations, the speakers will staff this booth to give attendees one-on-one advice to individual questions.

The main educational sessions will be divided into twice as many categories this year rather than the customary three. There will be



James Snow from the USGA will be one of many nationally renowned speakers at this year's EXPO.

education for mechanics, staff, and turfgrass business owners among the traditional categories. This is the year that you will want to bring other people from your organization. Not only will there be more specific education for others on your staff but there will be a much reduced cost for them as well. Half price registration will be charged



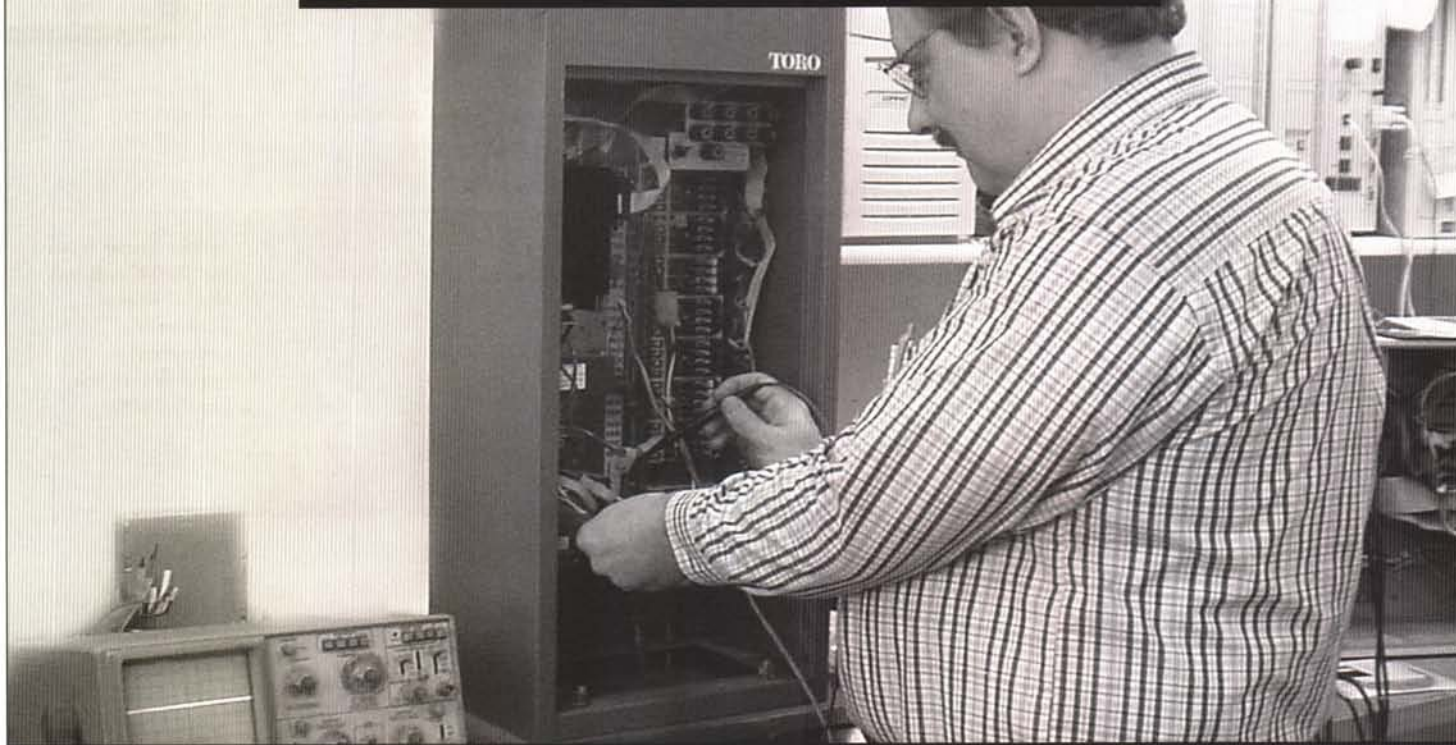
Ed Witkowski
Mike Kozlowski

Full Line of Turf Products
Chemicals
Competitive Pricing
New Product Information
Satisfaction Guaranteed

805 Ela Avenue
Waterford, WI 53185
262-534-3334 • Fax 262-534-2990



Have Reinders Handle Your Winter Irrigation Service Needs



Preventative maintenance for all types of controllers



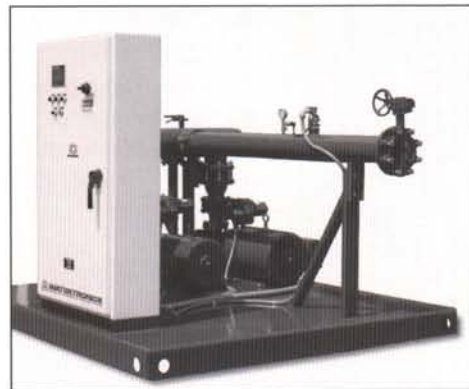
Aerator service



Toro Modem Alignment

- Network 8000
- LTC 2.0
- LTC+

1-800-785-3306



Watertronics pump station service

**Sprinklers • Controllers • Central Control Systems • Fountains • Valve Boxes
PVC Pipe • Wire • Repair Couplings • Drain Tile • Aerators • Valves**

Reinders

Solutions & Supplies for the Green Industry

Proud Supplier of Turf Equipment to the Milwaukee Brewers and Green Bay Packers



MILWAUKEE
(262) 786-3306
13400 Watertown Plank Road
(800) 785-3306
Elm Grove

WAUKESHA
(262) 524-0200
W239 N390
Pewaukee Road
(Hwy. J)

KENOSHA
(262) 857-3306
20830A 75th Street
(Hwy. 50)
Bristol

MADISON
(608) 244-0200
4217 Nakoosa Trail

APPLETON
(920) 788-0200
900 Randolph Drive
Little Chute

STEVENS POINT
(715) 342-3600
3510 Post Road (Hwy. 54 & 51)
Plover

www.reinders.com

for additional attendees from the same organization. All these attendees will appreciate the specific education to help them in their individual work areas.

They will also be impressed with how huge the trade show is anticipated to be. Why do I think the trade show is going to be larger than ever? This is because we have nearly the number of exhibitors registered as of October 1st that we had for all of last year's show.

The trade show layout will return to the traditional open layout format used over several years. We listened to you when you told us you didn't like the maze-like layout from the past couple years. The schedule in the trade show this year will also be different. There will be specific times that each industry may visit the exhibitions. For instance sports turf people will have a break in their education to visit the trade show from 10:00 to 11:00, and golf turf people will have a break from 11:00 to 12:00. This will allow you time to get more individual attention without the crowds.

The vendors are going to sponsor a new addition to EXPO. They will hold a Tuesday night get-together in one of the convention center's pubs. This social gathering will allow you time to get a bite to eat after Tuesday's education then return to visit with your friends and enjoy a cold one without having to leave the hotel.

So many changes are occurring at this year's EXPO. They are all changes that you requested and ones that will be positively received. This is true whether you've never attended or have come to every WTA Winter Turf EXPO. Tell all your peers and especially bring others from your organization. Remember that others from the same organization get in for half price. You will all be very pleased with the new look of EXPO. ♣



Wisconsin Turfgrass Association

Presents

The Winter Turfgrass and Greenscape Expo 2004

Workshops - Monday January 5th, 9am-3pm

Sessions - Tuesday January 6th, 8am-4pm

Reception - Tuesday January 6th, 7pm-11pm

Sessions - Wednesday January 7th, 8am-4pm

List of Speakers: James Snow - USGA
Dr. Harry Niemczyk
Blaise Winter - Keynote Speaker
Dr. James Beard
Many Other Speakers

New For 2004: 7 sections of interest
Lower Cost for additional attendees
Tuesday Luncheon Keynote
Tuesday Night Get together
Ask the Speaker (in Exhibit Hall)

If you have any interest in the Turfgrass industry it will be a benefit for you to attend. Whether you are involved in golf, sports fields, parks, commercial properties, lawn care, business owners, or mechanics.

Mark Your Calendars and plan to attend with your entire staff!

Registration Materials will be in the mail soon!

Please contact Audra at 608-845-6536 if you do not receive the registration packet.



Insecticides

- Chipco® Choice™
- Chipco® TopChoice™
- Chipco® FireStar™
- DeltaGard®
- Sevin®
- Merit®
- Dylox®
- Tempo®
- Nematicur®*

Fungicides

- 26GT®
- ProStar®
- Banol®
- Chipco® Signature™
- Compass®
- Bayleton®

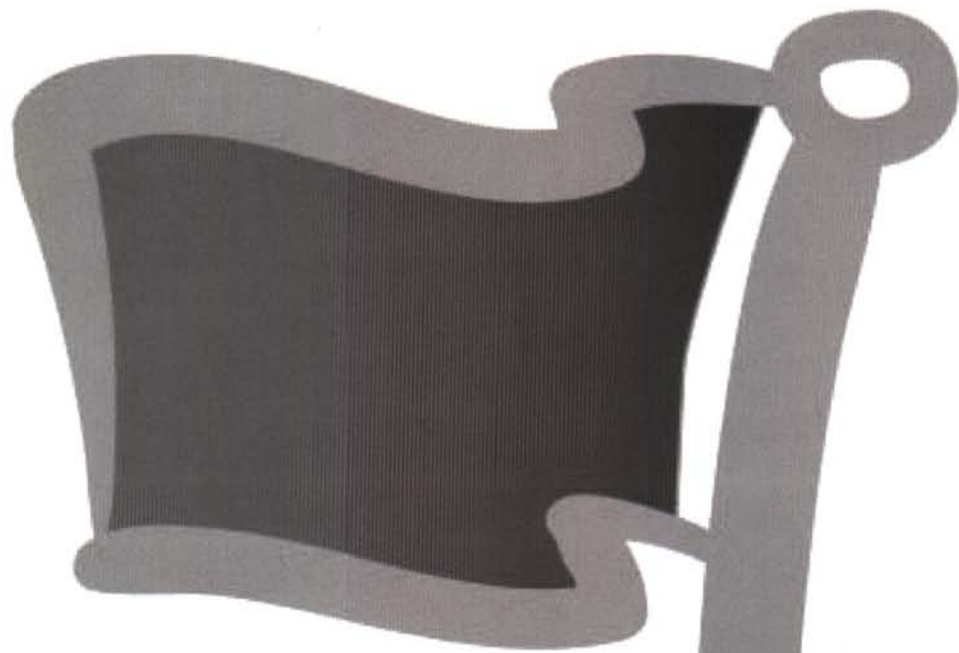
Herbicides

- Ronstar®
- Prograss®
- Acclaim® Extra
- Illoxan®
- Finale®
- Sencor®
- Revolver®

Plant Growth Regulator

- Proxy®

*Nematicide



Keeping Golf Courses Green

with effective, responsible controls



Kerry Anderson
Sales Representative
(815) 923-1323

