

TABLE OF CONTENTS

THE PRESIDENT'S MESSAGE If There's a Will, There's a Way!	3
TDL Know Thy Disease	5
MISCELLANY April Meeting At Evergreen Golf Club	9
BADGER TURF AND GROUNDS CLUB Influences of Base Saturation Ratios on Creeping Bentgrass Establishment	11
PERSONALITY PROFILE 10 Years + 58 Columns + 61 Personalities = Lots of Memories	16
GAZING IN THE GRASS Straddling the Environmental Border of Lake Tahoe	23
WISCONSIN ENTOMOLOGY REPORT Thresholds Are Different For Everyone	29
NOTES FROM THE NOER FACILITY Fundraising For Turfgrass Research At the Bog	30
TALES FROM THE BACK NINE Kidd	33
WISCONSIN PATHOLOGY REPORT Applications of DNA Marker Technology to Turfgrass Pathology Research	37
FROM ACROSS THE COUNTRY PDI - Something To Think About	42
MISCELLANY May Meeting At Janesville Country Club	47
JOTTINGS FROM THE GOLF COURSE JOURNAL The Mound Builders	48
THE EDITOR'S NOTEBOOK Nature Roars; Wisconsin Superintendents Suffer	53
MISCELLANY Touched By a Friend	57
MISCELLANY Lake Noer	61
POA TRIVIA	64

ABOUT THE COVER

Noted landscape artist J.L. Samerdyke has taken the favorite holes of Mike Handrich and Jeff Bottensek for her cover subjects. Mike is hosting the 2000 Wisconsin State Amateur Tournament at Racine Country Club and offers the scenic 1st hole as his favorite. It is a par 5, and the fairway bunker on the left side has a tree in the middle of it. Jeff and Stevens Point Country Club will welcome professionals and amateurs for the 2000 Wisconsin State Open. He likes a par 5 at his course, the scenic 15th.

These two venerable older courses are among Wisconsin's finest and will serve as superb venues for Wisconsin two most important golf competitions.

The longer I live the more beautiful life becomes. The earth's beauty grows on me. If you foolishly ignore beauty, you'll soon find yourself without it. Your life will be impoverished. But if you wisely invest in beauty, it will remain with you all the days of your life.

— Frank Lloyd Wright
Spring Green, Wisconsin

THE GRASS ROOTS

THE GRASS ROOTS is a bi-monthly publication of the Wisconsin Golf Course Superintendents Association, printed in Madison, Wisconsin by Kramer Printing. No part of THE GRASS ROOTS may be reprinted without expressed written permission by the editor.

EDITOR AND PUBLISHER
Monroe S. Miller
Blackhawk Country Club
P.O. Box 5129
Madison, WI 53705
groots@globaldialog.com

EDITORIAL STAFF AND BUSINESS AFFAIRS
Dave Brandenburg
P.O. Box 314
Theresa, WI 53091



BOARD OF DIRECTORS
Front row: (L-R) Dan Williams, Kris Pinkerton, David Brandenburg, Mike Kactro. Back row (L-R) Scott Schaller, Gordon Waddington, Marc Davison, Mike Lyons, Mike Berwick

1999-2000 WGCSA OFFICERS AND DIRECTORS

PRESIDENT Kris Pinkerton Oshkosh Country Club 11 West Ripple Oshkosh, WI 54901	DIRECTORS Dan Williams Riverview Country Club N1385 Ellen Lane Greenville, WI 54942
VICE PRESIDENT Dave Brandenburg P.O. Box 314 Theresa, WI 53091	Mike Berwick N5973 Canal Street Princeton, WI 54968
TREASURER Marc Davison Green Bay Country Club 1864 Charles Street DePere, WI 54115	Mike Kactro 704 W. Washington Hartford, WI 53027
SECRETARY Michael Lyons Old Hickory Country Club 316 York Street Beaver Dam, WI 53416	Gordon Waddington N80 W5241 Bywater Grafton, WI 53012
	PAST PRESIDENT Scott Schaller North Shore Golf Club W6788 Windward Drive Greenville, WI 54942



If There's a Will, There's a Way!

By **Kris Pinkerton**, Golf Course Superintendent, Oshkosh Country Club



Many times we have heard about the importance of education, communication and good old experience. With all the variables in our world of golf course management, the continual execution of proper decisions is paramount. Sometimes the slightest deviation from solid practices can lead to dead grass, upset golfers or in some cases, loss of employment.

However, golf course management is not all that difficult! I say so, because there are many superintendents who have become successful using non-standard approaches. If our business was so complicated and difficult, successful programs would only be allowed by the following of strict guide lines. This thought in no way is meant to imply that there is only one correct method used for maintaining turfgrass on your course. Proper skills and education can promote faster advancement, greater potential and job security over time.


So if skills are a contributory, but not an ultimate determining factor in golf course management, what is the key to success that we desire? Dedication comes to mind!

Superintendents like Wayne Otto, Danny Quast, Carl Grassl and many more like them, have made deep sacrifices and dedicated themselves to something they wanted to do. I'm sure they gave up other activities and aspects of life to pursue their dreams. They should not be pitied because of what they gave up in order to follow their desires. The sacrifices that they make are voluntary. Today their hard work is paying off. Today we watch them reap the benefits of years of hard work and dedication. Their efforts are to be applauded! But this message is not about patting them on the back, rather there is a lesson to convey.

The above named superintendents and others like them wanted it more than anybody else did. Their years of dedication, work and present success attest to that. Their will was so strong that nothing stood in their way. Supers like Wayne, Danny, Carl and others started out just as the rest of us. Yes, maybe they were

blessed with a "green thumb." But their drive and desire, their will, carried them from the start, through the good and the bad, over many years to where they are today.

However, the benefits of dedication are not limited to those few who reach the top of the mountain respectively. Dedication can reward us at all levels. Just knowing that you put forth a genuine effort, and that effort produced the best playing conditions possible, no matter the level of your golf course, is rewarding.

Unfortunately, there is no blueprint to will and desire. Essentially, desire is up to you. You just have to look within yourself to find it. Will and desire can also influence our relationships and every aspect of our daily personal lives. Your return on investment in all areas of life is directly related to the amount of energy that you, and only you, put forth. We get back exactly what we put in! 





Leafminers



Thrips



Lepidoptera

wasted



Beneficials



Ornamentals



Workers

conserved

Running your business means walking a fine line. You have to eliminate insect pests, but you have to do it without harming beneficial insects, plants or your workers. The answer? Conserve* SC turf and ornamental insect control. Nothing's better at controlling tough insect pests. And since it's derived from a naturally occurring organism, Conserve also controls your worries about plant damage and beneficials. Conserve. It's not a synthetic. It's not a biological. It's business insurance.

 **Dow AgroSciences**
Conserve* SC
 Turf and Ornamental
 Insect Control



www.dowagro.com/turf 1-800-255-3726
 Always read and follow label directions.
 *Trademark of Dow AgroSciences LLC



United
Horticultural Supply

PROFESSIONAL TURF PRODUCTS

Shawn Hilliard

800/362-8049

Fax 608/846-1115



Know Thy Disease

By Jeff Gregos, Department of Plant Pathology, University of Wisconsin-Madison

Over the past couple of months, Noernet has had several discussions about diseases that were thought to be present on golf courses in Wisconsin. Some of these diseases included leaf spots and pythium blight. Upon further investigation it was found that none of these claims was true and the proper pathogen was diagnosed. This article is to help clear up all of the confusion on this topic and to assist with proper diagnosis in the future.

Question: I think that I have leaf spot active on my greens in the spring. How do I know that it is really leaf spot?

Answer: Leaf spots on bentgrass are not that common. As for the leaf spots diagnosed on bentgrass in Wisconsin, I have found only two. These include *Bipolaris sorokiniana* and *Drechslera catenaria*. Another leaf spot of bentgrass is red leaf spot caused by *Drechslera erythrospila*, but this pathogen has

not been diagnoses in the TDL as of yet. Out of these three pathogens only one is active in the spring of the year, *D. catenaria* (Leaf Blight). When using only plant and stand symptoms, leaf blight can be easily confused with other disease such as take-all patch. The symptoms include a leaf tip dieback, which is similar to what is seen with take-all patch in older stands. Without the aid of a microscope the two diseases would be very difficult to distinguish. After an incubation period spores would form on the leaves of the infected plants from the leaf blight disease and diagnosis would be relatively simple. If spores do not form, your problem is not a leaf spot.

As a side note it should be mentioned that Helminthosporium diseases no longer exist. Sometime in the 1980's it was decided that these pathogens would be broken up into two groups. Drechslera pathogens were named after a pathologist at the UW at the beginning of the last century and Bipolaris pathogens received their name because the spores germinate from both ends.

Question: Now that I know that I do not have leaf spot and that in fact it is take-all patch, why do I have it on older greens and what can I do for it now (after symptom expression)?

Answer: Unlike what most people think, take-all patch does not just infect younger stands of bentgrass. Take-all patch (TAP) is probably active on every golf course in Wisconsin, but symptoms are not always observed. Another difficult thing about this pathogen is that the symptoms show up long after the pathogen had its way with your piece of grass.

As you may know TAP goes through a decline period where symptom expression gradually fades out over time in younger stands of bentgrass. But, with a turfgrass ecosystem as with any ecosystem, populations of organisms are always changing. A good example of this would be the competition between moose and timber wolves on Isle Royale. The populations fluctuate over time. When the moose are high the wolves will be low and vice versa due to their dependence on each other and climatic changes. Similarly, the same thing happens in the turf ecosystem. Take-all also has natural predators which can be affected by weather, fungicide applications, fertilization, soil moisture, etc. Many of these answers are left unexplained and much more research is needed in this area.

As for curing TAP in the spring, leave the sprayers in

Our Business Is Growing.

With superior fertilizers, combination products and seeds, Lebanon Turf Products can solve any turf problem. Guaranteed. With over 200 different product offerings and a fleet of turf-care professionals on staff, we can answer your toughest questions and provide you with the perfect product for your soil conditions and turf needs. Call your nearest Lebanon Turf Products dealer or distributor for information. Or 1-800-233-0628.

Country Club
greenskeeper

ISOtek³¹

NX-PRO

par ex

Lebanon Pro

ISOPRO

ProScape

Frank Baden
Territory Manager
Bettendorf, IA
(319) 332-9288

the shed. But if it will make you sleep better at night your options are limited. The only chemistries that have shown some success with treating it are the DMI's (Banner, Bayleton, Eagle, Rubigan, etc.) and the strobilurins (Heritage). But, I could save you some money by telling you to include these into your snow mold protection program and get you a lot better control. The symptoms that you are observing now are from damage that occurred in the fall. This pathogen seems to be more active in the fall because the soil temperature hovers in its optimum range for development longer than it does in the spring. The magic numbers for soil temperature are 55-70°F. If a spring application is made it should be when the average soil temperature is around 55°F. After 70°F you are wasting money. In the fall the first application should be made when the soil temperature drops below 70°F and repeated 28 days later.

Now that we are past these crucial temperatures this year, it is time to deal with what you have. First thing is to ensure good root growth. This can be done with aeration and maintaining an adequate level of phosphorus. The other major factor is pH of the top inch of soil. You will want a pH lower than 7.0 to help reduce the severity of this disease. The second thing to do is to provide ade-

quate moisture to these areas. I know that everyone tells you that it is wrong to irrigate lightly and frequently, but this is a time for just that. I have seen this to be a very effective method to reduce symptom development at a golf course in the Madison area throughout the summer, and even eliminated the need for fungicide applications. This works because much of the root system is dysfunctional and is unable to use a lot of the water provided in a deep and infrequent watering regime.

One other factor to consider is your fungicides and irrigation water. The pH of these are usually on the alkaline side and can have an extreme effect on soil pH (at least irrigation water). At the Noer we are initiating a study to examine if the pH of the soil is changed by repeated application of certain fungicides. As you know it is very difficult to change the soil pH, but the pH of the rhizosphere (around top one-inch) can be changed rather easily. This may be the reason that we are seeing more take-all on older stands.

Question: This spring I have seen patches that had mycelium that looked like pythium blight and streaking in some cases; was this really pythium?

Answer: No!!!!!! Sure we had some warm days this spring, but the nighttime temperatures were not there.

Tournament TM Golf Course Accessories



Featuring Quality Custom Embroidered Flags, Poles, Cups, Bunker Rakes, Ball Washers & More.

LESCO is the exclusive distributor for



Contact your LESCO Professional Golf Representative or call (800) 321-5325.



LESCO[®]

LESCO is a registered trademark of LESCO, Inc. Tournament and Grow With Us are trademarks of LESCO, Inc. Southern is a trademark of Southern Golf Products, Inc.

FAIRWAY AERIFICATION

SERVING THE UPPER MIDWEST



We understand the importance of minimizing costly down time on a busy golf course. That's why Seasonal Services is your first choice for fairway aeration.

At Seasonal Services we use two Cushman GA-60 Aerators. This provides faster, more efficient service to our clients with a superior hole quality for more effective aeration.

We offer prompt, convenient Daytime and Evening service and provide references if desired.

Ph: 262.392.3444
Fax: 262.392.3445

Porter-Achtenhagen
Seasonal Services Ltd.

Pythium requires several days with HOT and HUMID weather (90+ daytime, 68+ nighttime, 90+ humidity). We did not have this and we did not have pythium this spring! What we did have was actually two different diseases active this spring, microdochium patch (pink snow mold or fusarium patch to the old timers) and yellow patch (cool-season brown patch).

If these confused you, don't be ashamed. I have heard of several cases where pythium products have been applied before the person discovered that it was not pythium. Yes, microdochium streaks and yellow patch has mycelium that looks like pythium in the field. But, these are very easy to diagnose under the microscope and can save you thousands in pythium products if you send in a sample.

Microdochium patch is cause by *Microdochium nivale* (a.k.a. *Fusarium nivale*; once again the taxonomists must have some type of job security). In the field you will have orangish spots about an inch to two in diameter. These can coalesce to form large patches. This pathogen produces a large number of spores, which enables it to be easily transported by water and equipment, giving the streaking effect. Because of the high number of spores and their characteristic shape it is easy to diagnose under the microscope, but it does require a

magnification of 400x or more.

As for yellow patch, this one is cause by *Rhizoctonia cerealis*. Yes, it is a relative of our buddy from the summer, but this one likes it cold. In the field the symptoms will be somewhat similar to brown patch. The mycelia of all *Rhizoctonia* spp. are similar, but differ in the number of nuclei present in each cell. This is only determined after staining the hyphae and viewing at magnification of 1000x.

Question: What is the take home lesson from this article?

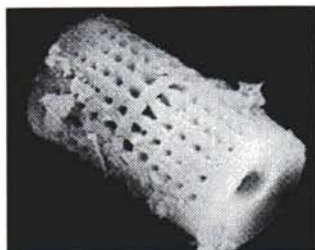
Answer: Support you local diagnostic lab (i.e. the Turf Diagnostic Lab) by getting a contract. The contract can be thought of in a couple of ways. First, it is an insurance policy to ensure that someone is actively employed in turf diagnostics that knows the crop and how to rectify your problems. Second, it is cheaper than a fungicide application. A \$500 dollar contract is cheaper than the price of fungicides to treat 18 greens. If we save you one application throughout the year, your investment has paid off. This also includes those wrong applications because you were treating the wrong disease. If you are interested in a contract or would like more info about the lab, feel free to give us a call at (608) 845-2535. ♡

After Aerating, Backfill With



from

ProGreen Plus 
A WISCONSIN COMPANY LLC



PSA is a calcined pure diatomaceous earth – 90.4% silica – like sand in its chemical composition. However, PSA is 82% pore space. These pore spaces improve the soil structure for greater root development.

BENEFITS OF USING PSA:

- Increases root zone oxygen
- Increases permeability
- Decreases compaction
- Decreases bulk density
- Increases root growth
- Facilitates the flow and exchange of plant-available air and water

Toll Free

1-888-PRO-GREEN

7 7 6 - 4 7 3 3

Mequon

11020 Buntrock Ave.
(262) **242-9100**

Fax: (262) 242-2117

New Berlin

16680 W. Cleveland Ave.
(262) **789-9550**

Fax: (262) 789-9509

To get 20 competitive quotes, you can make 20 calls...



or 1 click.



Introducing Greentrac.com® - a new way of purchasing that has vendors from around the globe competing for your business. Instantly.

Imagine this: you need supplies . . . sod, golf carts, computers. Anything you require to run your operation. You go to our website and enter your requirements in a simple electronic Request for Proposal (eRFP). Instantly, it goes out to vendors around the globe. Then, you sit back as they start competing for your business. Bids come in and, using whatever cri-

teria you want - price, delivery, features, warranties - you pick the winner. That's Greentrac.com, the revolutionary new service that's simply the easiest, most efficient way to purchase since the town marketplace. The cost to a buyer for using Greentrac.com? Zero. The savings in time, money and energy? Infinite.

Main Office: 2121 East Coast Highway, Suite 200 • Corona del Mar, CA 92625 • (877) 774-8722 TOLL-FREE • (949) 759-8131 FAX
David J. Oberle • Regional Director • 4250 Wexford Way • Eagan, MN 55122 • (651) 681-8050 TEL • (651) 681-8055 FAX • doberle@greentrac.com

For a free CD demonstrating what Greentrac.com can do for your business, call toll-free (877) 774-8722 or email us at customerservice@greentrac.com.



From screen to green, your best way to buy. And sell.™

www.greentrac.com

April Meeting At Evergreen Golf Club

By **Mike Berwick**, Golf Course Superintendent, Golf Courses of Lawsonia, Inc.

Bill Rogers hosted the opening golf and education meeting of the 2000 season on Monday, April 24, at the Evergreen Golf Club in Elkhorn. The weather was perfect and the golf course was in great condition. Eighty members and affiliates were present for the educational session and the four man scramble golf event.

After a burger and brat cookout buffet lunch, Dan Williams introduced our guest speaker, Mr. Steve Quale, Executive Director of The Golf Foundation of Wisconsin. Steve spoke on the topic of "The First Tee Program." Steve did a great job of explaining the goals and objectives of the program, even though it is still in the early stages of development. He stated that there are presently five programs that are either up and running or in the developmental stages in the state of Wisconsin.

The central theme of his talk was the importance of getting people interested in the game of golf at a young age to insure that there will be a need for the ever expanding number of golf courses and golf course superintendents to oversee them. By getting the youth of today interested at a young age and mak-

ing golf affordable for all children, the game will have a bright future.

Following golf a delicious assortment of hors d'oeuvres was served and the golf and event prizes were awarded.

Winners in the scramble event :

- 1st - Chris Wardwell, Brent Peterson, Jeff Townley, Mark Hjortness
- 2nd - Len Eibl, Robert Lorenzo, Harry Westbrook, Tim McGovern
- 3rd - Dan Shaw, Charlie Shaw, Mike Skenandore, Jim Ehnert

Winners of flag events:

Dustin Riley	Long Drive
Bill Rogers	Long Drive
James Krutilla	Closest to Pin
Brent Peterson	Closest to Pin

A special thanks to Bill Rogers and the entire staff at Evergreen Golf Club for a great day. ♣

Custom Verti-Drain with MST
Schedule today
(800) 743-2419

Serving the Midwest since 1989



Give Your Greens an Electrifying Cut!

Ransomes® E-Plex™ II

Mow up to 20 greens on one charge with the E-Plex II riding electric greens mower. The ultra-quiet E-Plex II is perfect for residential areas and early morning cutting. With fewer moving parts than its combustion-driven competitors, the E-Plex II is easier to maintain. This economical unit features an easy-to-service, swing-out center reel and quick-attach reels. And to ensure a precise cut, the E-Plex II allows you to control the clip rate by the ground speed. To make a big impact with little noise, come in or call today.



444 N. Madison Street
Chilton, Wisconsin 53014

800-279-2341

RANSOMES

TEXTRON
TURF CARE AND SPECIALTY PRODUCTS



www.tcsp.textron.com
ASRA-EPLEX-0599 © 1999 Textron Turf Care And Specialty Products
All rights reserved. Printed in the U.S.A.