

(Continued from page 49)

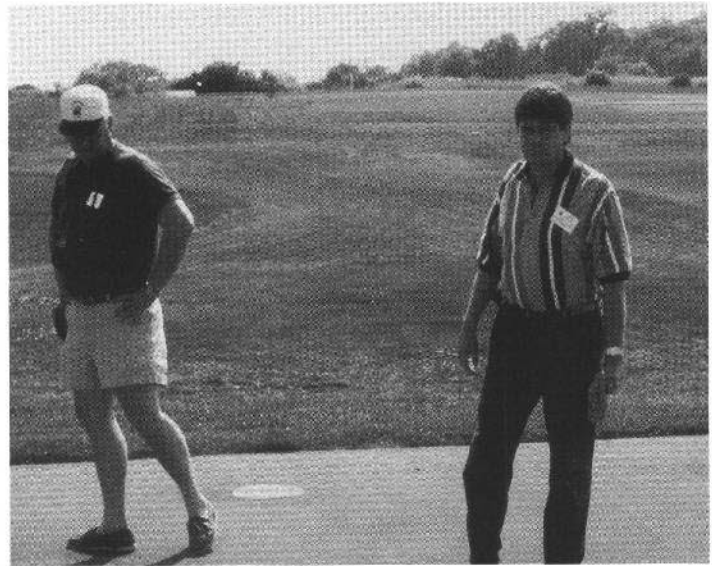
Following some further remarks from Dean Neal Jorgenson from the College of Agricultural and Life Sciences administration, the excitement began. I must admit that moderating five hours of research reports was one of the many highlights I've experienced in my short academic career.

Each state provided a "What's goin' on" type of report with general information about teaching and extension programming. The open floor discussion and questioning could have easily lasted the entire two days, but the enticing Noer Facility lay ahead for the afternoon.

Noer Facility Visit. Several of the researchers attended the meeting specifically to view the Noer Facility. Currently, Ohio State has a facility under construction with Purdue scheduled to build soon, as well as Minnesota and further expansion of the Michigan State University facility. I wish that each person even peripherally involved in the development of the Noer Facility could watch visitors turn green with envy. The fruits of all of your labor was apparent in the eyes of the researchers and brought to a crescendo when provided a personal tour by Dr. Kussow and myself.


Horicon Works. With the first day in the books and a wonderful Wisconsin dinner in our bellies we headed northeast to the John Deere Horicon Works. Dennis DePonte and his staff of engineers and retired engineers provided an in-depth and personal tour of the manufacturing facility. There was wonderful interaction among the attendees during the tour and many who have visited manufacturing facilities around the world marveled at the technological innovations that make the Horicon Facility one of the finest.


Mad Town Tour. As we boarded the bus for our return to Madison, I began to scheme of a way to really show off our great University and the city of Madison. Clearly, there would have been better tour guides than myself, yet, I gave it my all. We came in East Washington headed straight for the capital. The bus driver decided that a ride down State St. was appropriate, and having moved her after State St. was closed to traffic I was thrilled. Next stop was the UW Memorial Union terrace for some imbibing of refreshments and soaking up the atmosphere that makes the terrace a special place. A quick souvenir stop at the University bookstore and then on to Michael's Frozen Custard. All that was



Dr. Karl Danneberger from Ohio State University visited the Noer Facility during the NCR-10 meeting and will address Wisconsin Turf Manager at the Turf EXPO in January. That's Dr. Tom Voigt, U of Illinois Turf Extension Specialist on the left.

missing was the Farmers Market and a Badger Football game to make the day compete. Nevertheless, I was solicited by several researchers to do their sabbatical leaves here in Madison, as well as another who wished I had taken the GCSAA job so he could get this one!

Thanks. As you might imagine, the meeting was a resounding success and only strengthened the growing reputation of the program and industry have developed nationally. On a more personal note, I want to thank each and every one of you for allowing me the privilege to work for you in Wisconsin. As I talk with my colleagues, I realize that the partnership we have here in Wisconsin is truly unique and most enviable. I am grateful to be part of it. And with full minds and bellies all departed safely, waiting another 13 years to return. I'll look forward to that day also...



THOMAS J. EMMERICH
CERTIFIED IRRIGATION DESIGNER
• GOLF COURSE • COMMERCIAL • RESIDENTIAL •

- SYSTEM EVALUATIONS
- MASTER PLANNING
- TOTAL PACKAGE DESIGN SERVICES

T. J. EMMERICH ASSOCIATES, INC.
IRRIGATION CONSULTANTS
30556 BETTE ANN DRIVE
HARTLAND, WISCONSIN 53029
414-966-1051



DRAINAGE. DRAINAGE. DRAINAGE. 1995 SYMPOSIUM WILL COVER IT ALL!

Everybody from golf course superintendents to soil scientists to golf course architects will tell you the three most important things in golf course management are 1) drainage, 2) drainage, and 3) drainage. Who could argue with them?

The subject of drainage is one not yet covered in the decades long history of the Wisconsin Golf Turf Symposium, and the Symposium committee has a dynamite lineup scheduled to talk about it in Milwaukee on November 8 and 9, 1995.

Included as speakers are Dr. Paul Rieke of Michigan State, Peter Smith of Shinnecock Hills and Peter Beaves of Midwest Irrigation. Also, we will hear from GCSAA president Gary Grigg, George Frye, Dr. Albert Jarrett, Paul Eldredge and Bob Vavrek.

Details will be to you in the mail and in the November/December issue of THE GRASS ROOTS. Or, if you need immediate information on the Symposium (or anything else going on in Wisconsin golf), call Rod Johnson at 414-458-6048. He will be able to help you. ♣

Milorganite Initiates Turfgrass Research Donation Program

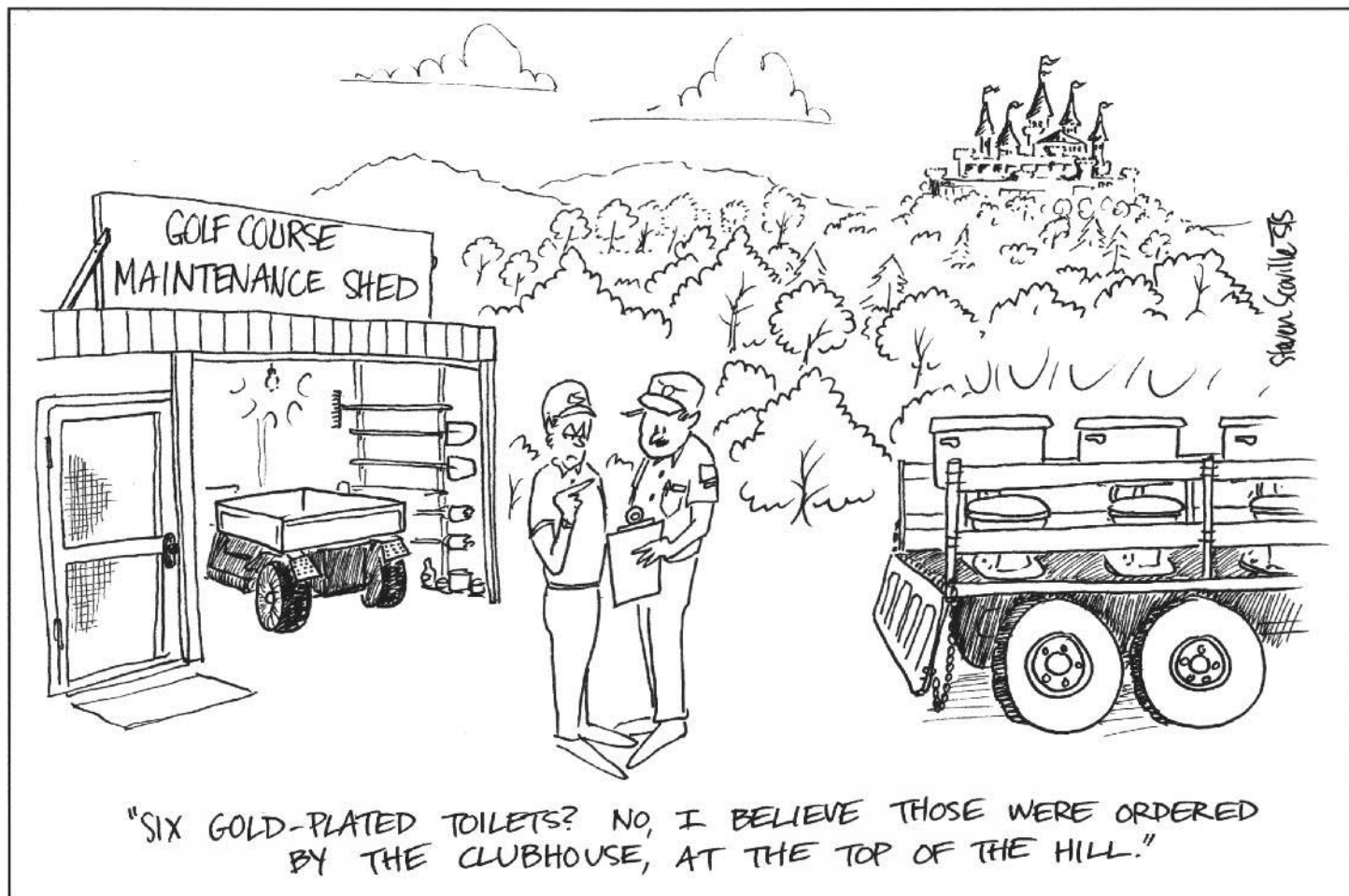
Golf course superintendents will be able to help the Wisconsin Turfgrass Association this fall when purchasing Milorganite.

For each ton of 50 pound bags or 1000 pound mini-bulk bags, MMSD will donate \$10 to your favorite turfgrass research organization. We here at THE GRASS ROOTS just assume it will be donated to the WTA!

Terry Ward, Al Nees and Larry Lennert have great appreciation for grass research from their long involvement in the NOER Turfgrass Research Foundation. The new program is a continuation of their research commitment.

The join the Reinders Daconil program and the Ciba Geigy research donation program in providing avenues of support for the WTA and all that goes on at the NOER Facility

Thanks! ♣





MEMO TO: GCSAA
FROM: Monroe S. Miller
RE: Chapter Affiliation Requirements
MYOB

Late in June a fairly innocuous piece of GCSAA correspondence arrived in my mail. *CHAPTER NETWORK NEWS* would normally have occupied a 30 second review before it hit the trash can. This one, however, had a front page title that caught my eye—*Proposed Affiliation Changes*. It piqued my curiosity, so I read it carefully.

My blood is still boiling. It seems somebody in Lawrence, Kansas thinks the Wisconsin Golf Course Superintendents Association is so desperate to be "affiliated" with the GCSAA that we will subordinate our organization to theirs, at the sacrifice of our independence. Fat chance. Actually, no chance. Zero, none.

I've known we were an affiliated chapter for a long time. In fact, as chapter historian I have reported in past issues of *THE GRASS ROOTS* that on July 14, 1935 our chapter was the second in the country to declare affiliation with what was at that time the National Association of Greenkeepers of America. To me, being affiliated merely meant our chapter supported the GCSAA. We received little or nothing in return.

Here is what GCSAA will now offer for "affiliation":

- 1. Delegate representation at annual or special meetings. Big deal.
- 2. Use of affiliated chapter logo—another big deal.
- 3. Cooperative programs—non-existent today, as near as I can tell, and not detailed for the future.

4. Executive staff benefits—since we have no paid executive staff, this is worthless to our Wisconsin chapter.

"And what," you might fairly ask, "do we have to do to receive these underwhelming benefits?"

1. Give the GCSAA an annual report of our finances. If this wasn't so outrageous, it would be laughable. For an organization with a history and track record of the GCSAA in fiscal prudence and judgment and responsibility to expect to review our money matters takes enormous gall. How we handle

our business affairs is of no interest to GCSAA and simply none of their business. In fact, they'd do well to run a ship as tight and efficient as ours.

2. A majority of our officers and directors have to be GCSAA members. Excuse me, but we choose our chapter officials on the basis of their leadership ability, commitment, professionalism, past involvement in the chapter and a host of other things. I doubt we will ever require membership in anything—Boy Scouts, the Lutheran Church, the Republican Party, the VFW or GCSAA—as a requisite.

3. Worst of all, in five-year intervals, affiliation requires we go from 51% to 100% membership in the GCSAA. Tyranny! That means all superintendent and assistant superintendent members of our Wisconsin chapter would have to belong to the GCSAA before they could join their own state chapter.

This requirement is the most absurd. It reeks of greed and arrogance. As if we would exclude any Wisconsin golf course superintendent or assistant from our chapter educational offerings, our meetings, the *GRASS ROOTS*, job assistance and the scores of other advantages just because they chose not to join GCSAA. Or couldn't afford it.

Membership in GCSAA will always be an individual decision and NOT a condition of membership in our state chapter.

Truth is, if they were to be requirements, they should be just the reverse: you cannot join GCSAA unless you already belong to a state chapter.

There are numerous other nickel and dime requirements that don't amount to much. My objection to these affiliation requirements lies in the above three items.

The schemers of this inane proposal are really out of touch. We are in a time when companies are downsizing. Citizens are sick and tired of local, state and federal bureaucrats and bureaucracies intruding into their lives; that is what recent elections have been about. We want less government, not more. Less intrusion, not more. Lower taxes, less interference and fewer rules.

There are reasons for the widespread cynicism of today, and GCSAA is not immune from it. The organization has enough to do without nosing into chapter business, unless invited. No one on the staff or in leadership positions is any smarter than we are. Staff haven't even been golf course superintendents or members of state chapters. We have members in our state chapter who have been GCSAA members longer than most or all of the GCSAA officers and directors. So, tell me, where is the expertise coming from?

I look at our chapter and I see a progressive, active, forward-thinking and responsible organization. We give

(Continued on page 55)

| | | |
|--------------------------|--|----------------------|
| TORO 3000 |  | TORO 3000 |
| | Golf Course Hydroinjection | |
| | Bill McMillan | |
| | <i>Serving Central Wisconsin</i> | |
| 2 MACHINES PER COURSE | 800490 TURF | DAY OR NIGHT |

Watertronics Pumping Systems Meeting Your Irrigation Management Needs

Effective golf course irrigation is one of your major concerns, as a superintendent. Maintaining your system can be time-consuming and expensive.

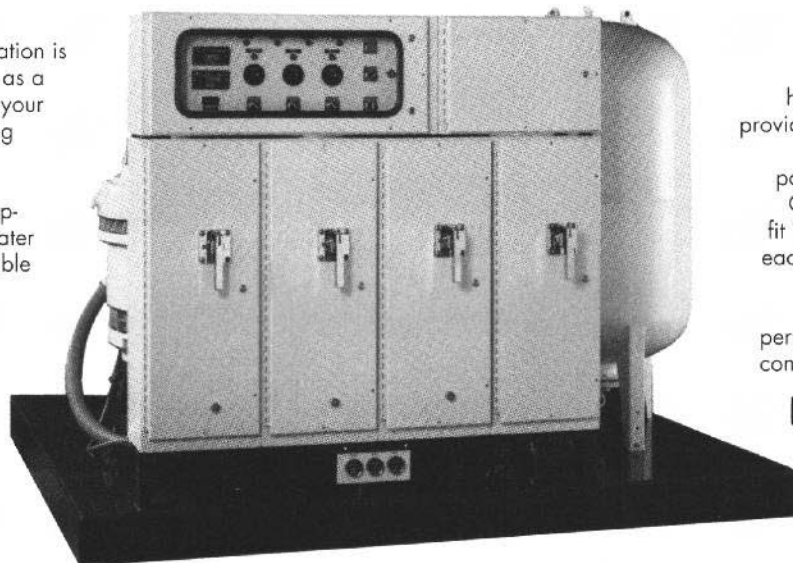
Now Watertronics™ electronically controlled pumping systems make efficient water management simple, affordable and automatic. Advanced microprocessor technology monitors and controls flow, pressure, pump sequence and water usage. Precisely and reliably. To save you time and money, year after year.

Watertronics systems offer electronic pressure regulating valves, VFD adjustable motor speed drives, and remote monitoring packages for optimum wire to water efficiency. Plus each station is dynamically flow tested at the factory.

Excellence in system design and construction

Watertronics systems include a selection of high quality pump configurations:

- Vertical Turbines
- Centrifugals
- Submersibles
- Wet Pit Systems
- Variable Speed
- Booster Stations



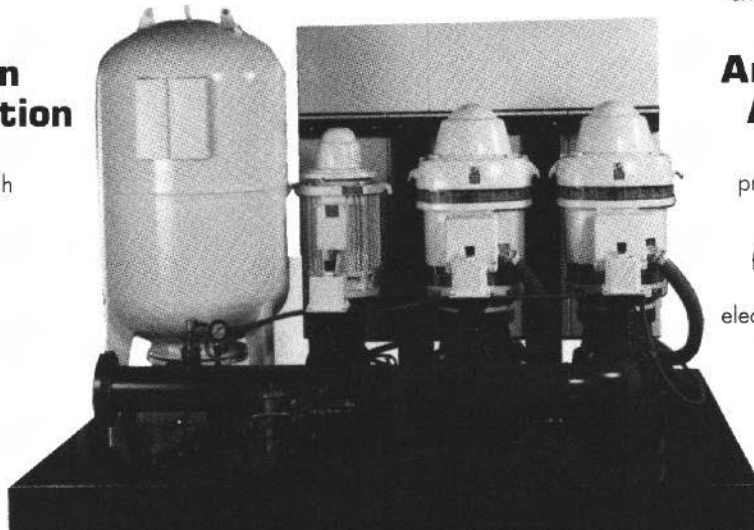
Custom fabricated modular controls to meet your local electrical code requirements.

Custom designed VT 1200 model delivers up to 1200 GPM at 125psi discharge pressure on only a 96" x 108" base.

High engineering and design standards plus heavy-duty construction provide the rugged dependability you expect in a packaged pump station. Custom-design services fit Watertronic systems to each application. No "off the shelf" models, that may not give you the performance capability or configuration you require.

Retro-Fit Controls Packages

Watertronics microprocessor based technology, electronically actuated regulating valves and VFD adjustable motor speed drives can easily be added, increasing performance and efficiency. This means you can retrofit your existing pumps without extensive renovation.



Amazingly Affordable

High-tech doesn't mean high price. Watertronics systems are surprisingly affordable.

But don't just take our word for it. Call us today to find out how easy and cost-effective electronically controlled pumping systems can be.

Toll Free: 800-356-6686
or (414) 367-5000

 **WATERTRONICS**
ELECTRONICALLY CONTROLLED PUMPING SYSTEMS

525 Industrial Drive, Hartland, Wisconsin 53029-0530

(Continued from page 53)

scholarships to UW-Madison turf students. We give formidable amounts of money to turfgrass research at the NOER Turfgrass Research Facility. We helped build the NOER Turfgrass Research Facility. We've run the Symposium for decades, absolutely one of the finest turfgrass educational offerings anywhere. We have an award-winning chapter publication. We gave the GCSAA \$10,000 for the University of Iowa cancer study. We have donated substantially to the TIF library at Michigan State University. The list could go on and on.

And, gee whiz, we did it all by ourselves, without any help from Lawrence. I'll bet we can continue on for years to come, with no more advice than we are getting now. And without affiliation, if need be.

In fact, the one time we asked for some help—the Town of Casey pre-emption issue that went to the U.S. Supreme Court—our request was met by GCSAA with a deaf ear.

Beyond these initial affiliation requirements—reporting, membership quotas,

et. al.—any fool can predict the next one: chapter dues payable to GCSAA. I prefer we continue to use our financial resources at our collective discretion. GCSAA has plenty of money.

If the stick to force affiliation is the meager list of offerings noted, then the stick is a feather.

Do not misunderstand. I am a long time—23 years—and loyal, faithful and altogether supportive GCSAA member. I have served on lots of committees, attended scores of seminars and attended 23 consecutive conferences. My GCSAA membership has been valuable and worthwhile, and I wouldn't think of not belonging. I recommend membership to all golf course superintendents. Every single one can benefit from membership.

But I am not arrogant enough to tell anybody they HAVE to belong. "I hope you do," I say, "but it is your choice." It would be very rewarding for those of us who are GCSAA members to see our chapter colleagues all decide to join us in the national organization. But they have to decide. Coercion just isn't our style. Never has been; never will be.

Those of us who choose to be GCSAA members will be members in full, regardless of chapter status. So why compromise our principles? If we want or need help for our chapter, we will ask for it. So far, since 1930, we have done real well. And I see no disaster looming on our state chapter's horizon.

The way to increase GCSAA membership is not by some strong arm tactic, but rather by making that membership desirable, valuable and important to every golf course superintendent. Do that and individuals will join. Let that be the initiative, not some requirement "because that's what the PGA does."

Our independence and our autonomy should be too important and too valuable to give these silly proposals serious consideration or even a second thought. The benefits of affiliation are negligible; the cost is too high.

I believe in unity and solidarity. These affiliation proposals, however, are likely to lead to alienation; they are divisive when the goal should be inclusion.

Forget it. 🌱

Spending too much time in the rough?



**Hanley's of Sun Prairie
will get you back on
the course fast with
the Cushman 6150
Wing Rotary Mower.**

The Cushman 6150 can mow at 7 m.p.h. with 1, 2, or 3 decks. It can cut up to 7 acres per hour with up to 10' 7" cutting width. Zero turning and fold up wings gives it maneuverability. It offers four wheel drive performance, and is easy to operate and service. The 14 m.p.h. transport speed will get you on and off the job fast.

Get in and out of the rough fast - Call Hanley's.

Hanley

Power Equipment & Turf Sales
641 W. Main Street • Sun Prairie, WI 53590
(608) 837-5111 • (608) 257-7815
Toll Free 1-800-279-1422


CUSHMAN
Driven to be the best.