

(Continued from page 49)

the dues money of all individuals making applications to the GCSAA if they were not also a member of a local chapter. Of course there must be an equal commitment on behalf of the WGCSA to reject the membership dues from any new member who is not willing to join GCSAA. That's going to be tough! How can we deny membership to someone into our chapter whose primary purpose for existence, mind you, is education and fellowship, especially an association made up of volunteers?

Before you scoff at this statement, did you know that there are 63 members of the GCSAA who are not members of either chapter within the State of Wisconsin. Why would anyone not want to join the Wisconsin or Northern Great Lakes Chapters? Sixty-three people. Wouldn't it be nice to realize a portion of that dues money going into the O.J. Noer Facility to fund additional research studies?

If the Wisconsin chapter of the GCSAA chooses to affiliate, one of the first things that you will more likely notice is a dues increase to pay for the liability insurance that will be mandated by the new agreement. The cost of the dues increase would have to cover the cost of an insurance premium that runs in the neighborhood of \$750 dollars per year, approximately \$4 per member per year. This insurance would protect members while they travel to and from meetings, and it would guard it against lawsuits brought on by third parties that a chapter could face. Also, if someone were to take chapter funds and use them for his or her own personal use, the liability insurance would provide coverage for that loss. Some homeowners insurance programs already provide limited coverages for volunteers, but they do not offer much, if any protection against an environmental lawsuit brought against the board and membership of the WGCSA by a third party. It is a good idea for each chapter to carry insurance coverage for its operations, activities and conduct and it would provide insurance for premises, operations, property, personal injury, special events and directors and officers liability.

In cooperating with the new agreement, some of our bylaws would have to be amended to conform with the standard bylaws set by GCSAA. Changes to our bylaws have always been made to reflect changes made on the national level and business has been done that way for as long as I have been a member of your board. However, some of the changes could take away the vote from some of our newer members, most notably a new assistant golf

course superintendent member of our organization. This will happen after the bylaws changes are approved in Orlando. Assistants who declare that they are "career" assistants would have to have a separate level of classification so that they can retain their vote.

GCSAA's goal is to work with the chapters to serve its members, to strengthen the affiliation between GCSAA and its members, to increase communication among the chapters and communication between GCSAA and the chapters, and to develop chapter programs and services to benefit the members. I am aware of leadership development programs that are already in the "draft" stage for the purpose of training chapter officers and directors. GCSAA has identified individuals who volunteer to serve their local chapter as key members whom might be effective leaders to enhance the image of the golf course superintendent on the national level. The overall system could be developed into an "airport-like" hub system linking all chapters together through GCSAA. Successful programs found in sister chapters would be shared by others seeking similar information. And the program wouldn't stop there. There is a strong push to develop better communications among chapters, I suppose very similar to the joint meeting between our chapter and the Minnesota Golf Course Superintendents chapter that was held in July of this year. Some of the programs being offered are of little or no use to the WGCSA, but like being in an all you can eat buffet line, you can take and eat what you like. GCSAA has worked very hard to identify and communicate with the leadership on the local chapter level. It has a charged mandate to improve the image of the golf course superintendent in the eyes of the golfing public everywhere and to send a positive message to the public at large about the favorable impact that golf courses have on the environment.

So where do we go from here? I sat next to a delegate from another chapter who informed me that his chapter, in principle, was against some of the restrictions found in the affiliation agreement, but he was told to vote for it anyhow as they felt that the measure would pass. I also sat behind a former president of GCSAA, whom I personally have never seen agree with anything, that once he understood the ideals of the agreement stated that he was all for the affiliation agreement. And at that meeting, the vote for passage of the proposed chapter affiliation agreement was more than a landslide, it was a slam dunk! Maybe when you find yourself in the company of a gracious host, as GCSAA is, people find

LEIBOLD IRRIGATION COMPANY

Professional
Installation of
Complete Golf
Course Irrigation
Systems.

"Satisfaction Guaranteed"



Excellence in Irrigation®

John Leibold
(815) 747-6024 Bus.
(319) 582-9351 Home
18950 Route 5 West
East Dubuque, IL 61025

**Tee to
green**
the keys to
keeping your course in
tournament condition
every day of the season

Your key Team Pro is:
John Turner
Senior Sales Representative
708-462-9866

10

NITROFORM®
NUTRALENE®
TURCAM®
BANOL®
PROSTAR®
PROXOL®
PROGRASS®
FINALE™
ACCLAIM®
ILLOXAN®

 **AgrEvo™**
A Company of
Hoechst and NOR-AM

that it is difficult to disagree and to debate the issue to support the opposite viewpoint. Most just nod their heads in agreement and are willing participants in the governing process like those with more articulate talent to express themselves.

However, do not misunderstand me. All issues were fairly discussed, concerns were voiced, understood and mediated in a fashion that favorable solutions were achieved. Everyone had a chance to voice their concerns and were given the opportunity to do so freely. But I can tell you this: the GCSAA board of directors and the chapter relations committee worked very long and hard in preparing and debating the issues and working out the bugs before presenting them to the delegates present. All the cards were laid out on the table before us for our inspection and review. These were very open and honest discussions that led to the final details of the chapter affiliation agreement. They were no smoke and mirrors, no scheming or backroom deals. All items were negotiable and were placed on the table to be refined during the debate. You can really tell that the board wants to hear and expects to hear our input and the input of all members on the issues.

The choices for the Wisconsin GCSA, a charter chapter of the GCSAA, are simple. We can join GCSAA and other chapters from across the country and abroad by renewing the affiliation agreement. Or we could allow our affiliation with GCSAA to lapse and simply become a chapter that chose not to follow affiliate. Remember that GCSAA is still made up of individual memberships. The individual members does not lose any rights or entitlements that are due him. Should we choose not to affiliate with GCSAA as a chapter, we would lose the ability to vote using a delegate. We could create a new set of bylaws with loopholes present to circumvent the process. We could form a new chapter made up of GCSAA members only and call ourselves the elite ones. But we would have to pay the new chapter registration fee of \$500 and other costs associated with the start up of a new chapter. Or we could hop on the bandwagon and influence the direction of future GCSAA directions. Is there a compromise that will allow both parties a "Win-Win" situation? The more I study the proposed changes, the more potential I see in making both the Wisconsin GCSA and GCSAA stronger entities. Although chapter dues are not being sought at present, the new affiliation agreement will call for a dues structure sometime in the future and will come as soon as the initial affiliation agreement is subject for review in the year 2000. Chapter dues will be justified by future GCSAA Boards as a means of supporting the numerous chapter programs that are to be developed. Maybe the price will be small in comparison to the benefits accrued.

Now if I could only get over my feelings of segregation, discrimination, and the ensuing fear of being sued as an officer of your chapter after I have just told someone we have to deny their application into our chapter because they do not meet the ability to pay for memberships into both organizations. It will be a difficult decision for all of us. ♣

Wisconsin Golf Turf Symposium

MARK YOUR CALENDAR!

November 8 & 9, 1995

Hyatt Regency Hotel – Milwaukee, Wisconsin

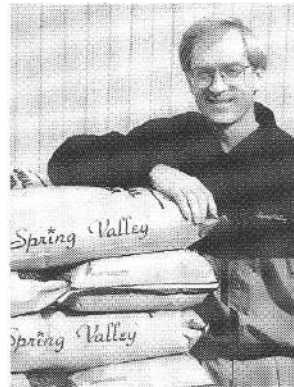
NEW



SPRING VALLEY®

**"TOP CUT"
MILORGANITE®**

Spring Valley is launching a series of new products made with a larger, granular size Milorganite, called "Top Cut". Top Cut is sized to blend uniformly with Nutralene®, GSL® sulfate of potash and SCU. Milorganite has exclusively endorsed Spring Valley to formulate fertilizer with this new granular product. Spring Valley's new "Top Cut" Milorganite products give you a clean, uniform spread, and the non-burning features you expect from Milorganite.



SPRING VALLEY Fertilizers
with
"Top Cut" Milorganite

12-1-12 (Fairway Special)
25-2-4
20-2-5 + TEAM®

**Only SPRING VALLEY has
"Top Cut" (granular) Milorganite**



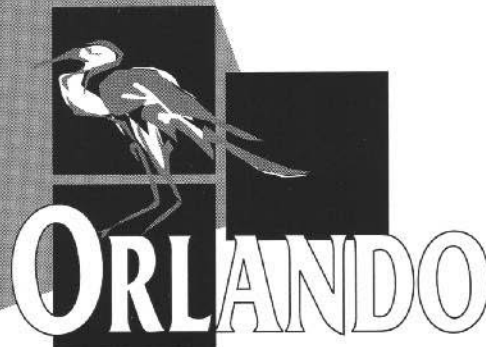
SPRING VALLEY®
Turf Products

Call for FREE sample
1-800-635-2123

Milorganite is a registered trademark of the MMSD
TEAM is a registered trademark of DawElanco
Nutralene is a registered trademark of AgrEvo
GSL is a registered trademark of Great Salt Lake Minerals

Discover the Magic of Orlando

at the
**GCSAA 67th International
Golf Course
Conference & Show**



February 5-11, 1996
Orange County Convention Center
Orlando, Florida

Discover new ideas from knowledgeable experts at numerous educational seminars and programs.

Discover new trends and products from more than 650 exhibits at the trade show.

Discover new colleagues for networking and sharing challenges and solutions.

Discover the fun of competing in the best golf championship of your lifetime. (GCSAA members only)

Register Today!



1421 Research Park Drive • Lawrence, KS • 66049-3859
800/472-7878 • Fax: 913/832-4420

NOW YOU HAVE A CHOICE!



40 OF THESE

OR



2 OF THESE

Milorganite Is Now Available In 1000 lb. Mini-Bulk Bags!
Call Your Milorganite Distributor for Details.

SOLID AGRONOMY



MILORGANITE DIVISION - MMSD • 1101 NORTH MARKET STREET • MILWAUKEE, WI 53202 • 800-287-9645

**From THE GRASS ROOTS Staff
and all of the Artists at Kramer Printing**

To our Faithful Readers...



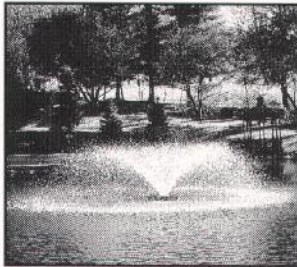
*Merry Christmas
and a
Happy New Year!*



Spring Valley Turf Products of Jackson, Wisconsin will be holding their annual Turf Fair on **Tuesday, March 5, 1996 at The Country Inn in Pewaukee, Wisconsin.**

For further information contact Jordan Sensibar at (800) 635-2123.

**OTTERBINE®....
Your Water Quality Management Specialists**



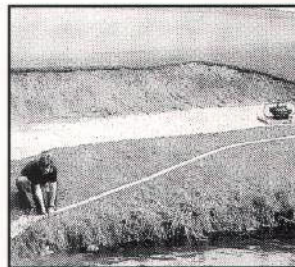
Surface Aerators

- Reduce the problem of algae, aquatic weeds and odor.
- Introduce O₂ into the pond.
- Available in a variety of spray patterns and sizes.



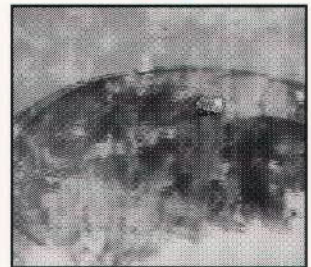
Sub-Surface Aerators

- Introduce O₂ into the pond bottom via Sub-Surface or Diffused Air.
- Perfect for shallow ponds.
- No visible spray pattern.



Bunker Pumper

- Removing water from bunkers, excavation sites or swimming pools.
- 280 GPM pumping rate.
- Floating, self priming portable - only 85 lbs!



Ottershield Lake Dye

- Transforms muddy water into **healthy blue water**.
- No stained clothes or hands - you never touch Ottershield.
- Neat, clean, packets.

Reinders

1 800 785-3306

Replace your old Otterbine with a new one and receive a discount of up to \$600.00!!

Elm Grove
13400 Watertown Plank Rd
(414) 786-3306.

Madison
4618 A Tompkins Dr.
(608) 223-0200

Appleton
900 Randolph Dr.
(414) 788-0200.