

Sentryworld Honored by WMC

By Gary Tanko

On May 23, 1995 I had the opportunity to accept an award that reflects favorably on all golf course superintendents in Wisconsin. The Wisconsin Manufacturers and Commerce, and the Wisconsin Environmental Working Group (an affiliate of WMC) have recognized SentryWorld Golf Course as the 1995 Wisconsin Business Friend of the Environment award winner. The award recognizes leadership in environmental protection.

There were three categories in which different companies around the state were recognized: pollution prevention, innovative technology and environmental stewardship. Criteria had to be demonstrated in a written report. From these, three winners were selected from each category.

I was very excited to receive the award, and I feel it will demonstrate to many people just how golf courses do provide leadership in environmental protection. Some of you may have read about the award in *CORPO-*

RATE REPORT or in local media. The criteria I noted was a big part of what all golf course superintendents already implement with great success. The New York Audubon Sanctuary Program is the driving force behind most of our environmental projects. The program is exciting and gives all of us a sense of pride and accomplishment. In this regard, I was speaking for many WGCSA members.

I find much of my time now is spent in creating wildlife habitat, planting aquatic vegetation, building homes for birds and bats and butterflies, climbing ladders to clean them, establishing bugger zones, turning out-of-play areas into native wild areas, recycling and composting. I am also completing construction of a safe pesticide mixing, containment and storage room.

You may ask, "when do you have time for all this important stuff?" I too, must be careful not to forget about those priorities of greens, tees and fairways. However, it becomes very easy

for me to focus on environmental areas — bird activity, buffer zones development and other things — rather than stimpmeter readings. The new challenges have really added to the joy of the work at SentryWorld, and my hope is that these environmental activities will please many of our players and add to their enjoyment of golf at our course.

Communication with local organizations — garden clubs, university faculty, technical schools, Boy Scouts — is very helpful in demonstrating what really goes on at a golf course. These efforts are very rewarding to them and to me and my staff.

The goal of the *Business Friend of the Environment* program is to show state policy makers, businesses and the public that sound environmental practices are good for Wisconsin's citizens and for the state economy. The exercise was a rewarding one for me, and I sincerely believe that its influence will be good for all golf course superintendents. ♣



NOW NONRESTRICTED

ConSyst[®]
FUNGICIDE

Distributed by:

 **SPRING VALLEY**[®]
Turf Products

1-800-635-2123

How to Keep Things From Turning Ugly.



From nutsedge to nightshade, fire ants to fungi, nobody works harder to protect your turf and ornamentals than Ciba-Geigy.

For All Your Turf
and Ornamentals
Needs See...



CIBA-GEIGY

Don Spier, Marketing Specialist
10 Devine Way • Sycamore,
Illinois 60178

(815) 895-7860

Your Course Plus Our Putter Creeping Bentgrass Equals Happier Golfers. Really.



Kellogg Inc.
Seeds and Supplies

Distributed By:
P.O. Box 684
Milwaukee
WI 53201-0694
Tel: 800-527-5495
Fax: 414-276-2769



Golfers appreciate beautiful turf. And from fairway to green, **Putter** Creeping Bentgrass from Jacklin Seed offers great looks. But the real test is on the green. Putter offers a true-line putting surface that outperforms the competition in test after test.

A rich, dark, bluish green in color, **Putter** is a hearty variety with fine leaf texture and improved disease resistance. **Putter** features a dwarf growth habit and

high shoot density. And, it's very aggressive against Poa Annua.

Find out more about how **Putter** can improve your game. Call your Jacklin Seed marketing representative at 800-688-SEED and we'll send you a free, information-packed booklet and a half pound sample of **Putter** for you to test on your own. Call today!



Putter® 
Creeping bentgrass

Jacklin Seed Company

5300 W. Riverbend Avenue • Post Falls, Idaho 83854-9499
208/773-7581 • 800/688-SEED • TWX 5107760582 Jacklin PFLS



The Green Seal marks Putter as a world premium turfgrass variety.

Call 800-688-SEED for a free, information-packed booklet and a half pound sample of Putter.

April Rains at Lake Arrowhead

By David Brandenburg

On Monday, April 24th over 90 WGCSA members met at Lake Arrowhead Golf Club in Nekoosa with host superintendent Brian Wilhelm to listen to our speaker Dr. Chuck Koval and to play a fine golf course. Unfortunately, due to persistent rains, the golf event was canceled. Even though we couldn't experience it, everyone appreciated the work by Brian and his staff to host the event, and hope we can someday return.

Dr. Koval's topic was "Controls of the Future" and to understand what is new, we briefly looked at the past and how those products did or didn't work. One common point everyone could take home was pest controls, old or new, only work as well as the applicator who follows the label and understands the life cycle of the pest.

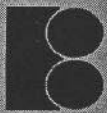
Presentations of appreciation and friendship were given to Dr. Koval by Mike Semler (on behalf of WGCSA) and Monroe Miller (on behalf of the WTA), as he prepares for retirement from the University of Wisconsin-Madison. Although the golf event was a rainout, everyone left Lake Arrowhead in good spirit and full of discussion.



Dr. Koval with WTA president Wayne Horman and WGCSA president Mike Semler.



The retiring Dr. Chuck Koval.



**the
bruce
company**
of Wisconsin, Inc.

Construction Services to the Golf Industry

Your source for Golf Course Construction, Reconstruction & Improvement.

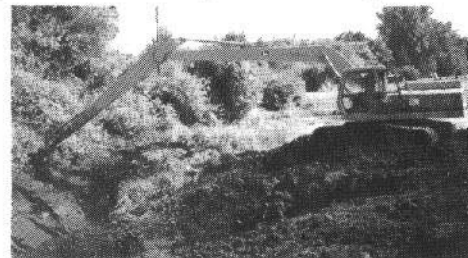
*You have the Projects, Ideas & Needs. We have the Experience & Equipment to do the job **Right the First time.***

*Many Trucks
Equipped with
High Floatation
Tires to
Minimize
Damage to your
Golf Course*



- Water Control Structures
- Pond Cleaning
- New Ponds
- Pond Lining
- Cart Paths

- New Construction
- Remodelling
- Irrigation
- Drainage
- Feature Shaping
- Trap Sand Replacement



*Specialized
Equipment
suited to
Cleaning your
existing Golf
Course
Water
Features.*

CALL US TODAY!!

Lee Bruce

(608) 836-7041

Carl Dowse

Established 1953



On a Personal Note...

By Dr. Julie Meyer
Department of Plant Pathology,
University of Wisconsin-Madison

In this issue, the pathology report will take on a more personal note. A second child is arriving soon in my family, and its impending arrival has sparked a time of reflection and deliberation between my husband, Wayne, and me. Reflection on what parenting has meant to us and how this will intensify with another child. Deliberation on how to balance our very satisfying professional lives with equally cherished family life and responsibility.

I've realized in talking with people over the past several weeks that most adults wrestle with these questions of priorities and lifestyle. And the solutions for each family are as personal and individual as the people in them. What I have decided to do for my solution is to "sequence" my major responsibilities to my young family and to my large extension clientele. Rather than work part-time at both of these large responsibilities, I have decided to take a one-year parental leave of absence, from July 1995 to July 1996.

A leave of absence will allow me to see the youngest child safely through the earliest childhood months and allow me some flexibility to determine how to best meet my commitments to my children and to the UW-Madison after this year.

What a hard decision it was to make! I will miss so many things about my daily working life, and miss so many people. But what makes me feel at peace about the decision is the knowledge of how good it is for children to be with their parents. I am lucky to have a husband who is also making arrangements to get his work done in ways that leave him time to be with his children in their daily lives.

A safety net of service in turf pathology will continue. I am especially concerned about you, the golf course superintendent, who, more than the grain crop grower, or even other kinds of turf managers, are literally under disease "pressure" during the season. I will see to it that four things continue

during my absence: the Turfgrass Disease Diagnostic Lab, the research trials at O.J. Noer facility, the fungicide evaluation trials, particularly for snow mold, and a compilation of research results and information in the *Wisconsin Turf Research Report* next winter.

For those of you who have not received an announcement, the Turfgrass Disease Diagnostic Laboratory (TDDL) is already in service and will continue during my leave. The new lab is intended to complement the existing Plant Pathogen Detection Clinic on the UW-Madison campus by providing disease diagnostic information and management recommendations specifically for turfgrass growers. The TDDL is housed in Room 285 Russell Labs in the Department of Plant Pathology. Steve Millett, Ph.D. candidate in Plant Pathology and Turfgrass Science, runs the daily operation of the clinic, with diagnostic support from myself, M.F. Heimann, Dr. Doug Maxwell and other faculty members in the department with skills in fungal disease diagnosis.

The new laboratory space and increased staff allows turfgrass samples sent to the TDDL to be processed immediately. When you send your sample in, you will be contacted within a day to confirm arrival and to discuss the preliminary diagnosis. If the diagnosis requires longer to confirm, you will be contacted regularly with progress reports. Final diagnosis and management recommendations for commercial samples will be discussed by phone or by FAX. The fee structure for the TDDL has been set at \$25.00 per sample for commercial turf managers, including golf course, sod farms and commercial lawn care companies. Please call Audra (608-845-6536) at the O.J. Noer facility for a brochure outlining the service, addresses, phone and FAX numbers, and tips for taking and sending samples.

Research progress will also contin-

ue in the able hands of Catherine Smejkal, who will maintain the ongoing research plots at O.J. Noer facility, and who will continue the snow mold fungicide trials this fall. I will be sure that the information from the 1994-1995 snow mold trials get to you in the next issue of the *GRASSROOTS*, and a summary of the year's turf pathology research be included in the next issue of the *Wisconsin Turfgrass Research Report*.

I wish you all the best season ever, with lots of hard, but satisfying work, the reward of green, healthy turf, and a job well done. Turf pathology at the University of Wisconsin is committed to helping you towards this goal! 🌱

4
fl. oz/1000² ft

4
oz/1000² ft

Outstanding, longlasting
control of dollar spot,
brown patch, pythium
and more.

RHONE POULENC AG COMPANY
P.O. Box 12014, 2 T. W. Alexander Drive
Research Triangle Park, NC 27709
919 / 549-2000



THE HUNDRED DAYS OF SUMMER

By Monroe S. Miller

The voice on the other end of the phone sounded worried. "I think maybe you should drive over here and see Larry. He needs some kind of help, and we don't know what to do."

The concerned voice that was pleading for a visit was John Kettel's. Johnny had worked at our shop for the first five years after high school and moved to Sweet Clover Country Club with Larry Strike when Larry got the superintendent's position.

They were a good team. Larry had been a cum laude graduate of the Madison campus turf program and spent time on both Bogey Calhoun's and Steady Eddie Middleton's crew before I hired him as my assistant. That is how John and Larry became such good friends.

It seemed a somewhat unlikely pair, given the difference in their educational background. But John was smart, and he had both a mechanical aptitude and a green thumb. His calling in life was golf course work.

Larry had the obvious nickname — Lucky. He should have been born in the 50s — the nickname would have been a scream then. After listening to the older guys for years, he finally got the license plates LS-MFT. In my youth it meant "Lucky Strike Means Fine Tobacco". It was one of America's most common and recognized ad lines. To Larry it stood for "Larry Strike Means Fine Turf". We laughed about it often.

That is something the kid always did easily — laugh. He was mild mannered, good natured and very happy to be in the world of golf turf. Bogey, Steady and I all knew he was a sure bet, especially with John at his side.

"What do you mean, John?" I asked, without a clue.

"I don't know, exactly, but he is a nervous wreck. He has become withdrawn, even with me. He's jumpy, worried all the time and just is not himself. Karen even called me about it. She is concerned like we are.

Maybe he just needs to talk to somebody."

"Don't worry, John," I assured him. "I'll call Calhoun and Middleton and see if there might be a time when we can get over there to visit with him."

"I think it's nerves," John added as an afterthought. "We are both a little inexperienced, and the heat and humidity of this summer are twice as bad as last year."

What golf course superintendent isn't nervous this time of year? For generations in Wisconsin, it has been called the "hundred days of summer." It has always been the same: from the end of May until the end of the first week of September, this work, our profession, can be a living hell. It is the time when nothing works, everything breaks and a loneliness sets in. I felt it in my mid-20s and I feel it now in my late 40s.

The mix is enough to challenge the most sane among us — fussy players, disease pressure, budget deficits, irrigation problems, a weak chairman or an unreasonable chairman, bugs, equipment troubles, heat, humidity, no rain when we need it and too much when we don't, and on and on and on. It is a wonder every golf course superintendent in Wisconsin doesn't have an ulcer the size of a quarter in his stomach. No sleep, no relaxation. Only the endless and unrelenting summer.

But you've got to handle it — in your own way, for sure. The reality is that the player hitting a nine-iron shot from a bad fairway lie doesn't care about your problems. He only cares about one thing: from the time he first tees it up until the final putt drops, the course better be good. Really good. Period. That's what he paid his money for and that is what he expects.

Bogey wasn't in his office, but Steady was. He said "I'll be right over" when I asked about driving up so see Lucky.

My shop was out of the way for Ed, but we thought it best to ride together and see if one of us had any theories on Larry. "Maybe John is just exaggerating," I offered.

"No, I don't think so." Eddie had a certainty in his voice.

"Last week I saw the LS-MFT plates and Larry's truck on the service road on the far end of our course. I was a little surprised to see it parked there, and really worried when I saw Larry slumped on the steering wheel. I rapped on the window and he nearly went through the roof. The kid was tightly wound. Honestly, when I was walking up to the truck, I thought maybe he was dead."

"What did he say? Why was he there?" I asked, half irritated Steady hadn't told me before now.

(Continued on page 47)

NATURAL ATHLETIC TURF INC. GOLF COURSE CONSTRUCTION & IMPROVEMENTS

*Specializing in Greens - Tees - Bunkers - Fairway
Construction - Feature Shaping - Drainage Systems*

By Contract or "T & M" basis. Also Astroturf Top Dressing drag mats

ROY G. ZEHREN • 11040 N. Buntrock Ave.,
Mequon, Wisconsin 53092 • (414) 242-5740



We Drive The World To Work And Play.

You may know Club Car as the most prestigious name on the golf course. But our Carryall Utility Vehicles are powerful enough to take on the toughest jobs at any work site, any day of the week. So no matter how hard you work or play, count on Club Car for world-class performance and the power to drive you there.



Club Car/Wisconsin • 2350 Commerce Drive • New Berlin, WI 53151 • Telephone (414) 786-8770 • FAX (414) 786-7588

(Continued from page 45)

"Well, once he got his color back, I asked him that and he just said he had to get away from everything and everybody for a little while. All my employees know that road and since he spent a summer on our crew, he know it was secluded and private.

"He said he needed to think a bit and needed a quiet place. He assured me that's all there was to it, started his truck and left. I guess I took him at his word."

It only took a few more minutes to get to the Sweet Clover shop. As soon as we parked, John was there. His face had a weary look, one that matched the concern in his voice earlier in the morning.

"I'm glad you guys came over; just don't tell Larry I called, OK?"

"Sure, sure John," I answered quickly, adding "but we aren't perfectly clear on what we are here for or what is wrong."

"Neither do I, but things aren't right with Larry. I can't get through to him. He hardly talks to any of us. He doesn't eat lunch. We seem to have lost direction and are always reacting to problems rather than trying to head them off. It is totally unlike him. But this morning I saw him stop his cart along the fifth hole near the woods. He walked about three steps and started vomiting. I am certain he didn't think anyone had seen him because he was surprised when I drove up and asked if he was sick."

John paused and then continued. "I pleaded with him to go see a doctor if he was sick. All he said was 'No, no, I'll be fine. Just nerves.'

"He has been drinking malox like soda pop. Karen stopped the other day and said he was withdrawn at home, too, wasn't sleeping and seemed pretty much miserable most of the time."

Ed and I took a Columbia utility vehicle and headed onto the SCCC course. John said to look for him on the 14th hole; he was fixing a satellite controller.

It had been a terrible month. The weather was miserable and fungicide budgets from LaCrosse to Sheboygan and a hundred miles on either side of that line were out the window. If Larry was having some sleepless nights, he wasn't the only one. But the Sweet Clover course looked to be in fine condition.

We found him where John said we would. He looked up briefly as we approached and quickly went back to

whatever he was doing, likely changing a fuse.

"How's it going, Lucky?" I offered with a smile as we stopped next to the satellite.

"What are you two doing here?" There was an irritated sound to his voice.

"I don't know about him," Eddie started, "but I want to know what the hell is wrong with you, anyway. Your wife is worried, your assistant is worried, and I still want to know why you

were hiding on my property last week. You have some tall explaining to do, so you might as well start. I have to get back to work."

Larry leaned back from the satellite. He was sitting on the ground and supported his weight with his arms behind him, palms flat in the grass.

"What if I said it was none of your business, Ed?"

"You better believe it's my business," Eddie shot back. "Fair weather friendship doesn't cut it with me. How

When It Comes to Turf Management ...

NOBODY KNOWS
LIKE YOUR
WILBUR-ELLIS PRO



Your one-stop shop for all turf management needs. Ask about our complete line of chemicals, fertilizers and seed.

Wilbur-Ellis...dedicated to quality, customer service and environmental stewardship.

Contact Ed Witkowski at

(414) 534-3334 or the 800 number nearest you:

IL 800-747-7400

WI 800-728-1090



®.™ registered or applied for Wilbur-Ellis Company. ©1993 WECO

many times have you called me with questions or asking for advice? Hundreds. How many times have I loaned you equipment? You know damn well that guy over there won't loan it to you, so you ask me. So when I ask you a question, a simple question, I expect an answer. Now."

I was surprised. My inclination was toward sympathy for the kid. He was young, somewhat inexperienced and probably having a difficult time psychologically with his work world. Ed obviously felt differently. He wasn't irritated; he was flat out mad.

Larry sat upright, startled by the tough talk, like I was. He looked Ed straight in the eye.

"I'm having a very hard time with the golf course," he said. "Not everybody has a big budget like Breezy Hill CC, and that makes it tough. I'm working 14 or 15 hours a day, the players are complaining all the time, and my wife is nagging me about not being home enough. Plus, the weather has been so bad that we just can't get on top.

"This season is unrelenting, and in two weeks we are hosting the Governor's Cup. I don't know how we will ever make it."

You could tell that Ed was mad. His face was burning red and he clenched his fist.

"Get up off the ground, Larry," he demanded. Larry complied, slowly, not exactly sure what had set off his old boss.

Ed walked over to him, stopping when his nose was about six inches from Larry's. Larry edged back, but Steady stepped forward so they stayed face to face. They could smell each others' mid-day bad breath.

"You sorry, selfish, whiny little jerk," Ed said with anger in his voice. "You're making everybody around you, including your family, miserable. Grow up and face the world with a little backbone.

"What the hell — do you think you are the only golf course superintendent with weather problems? Or a big tournament on the calendar? Or irrigation system trouble at the worst possible time? Let me tell you something, buddy boy. You don't have any problems here you cannot handle. That's what you get paid for, not to mope around looking for sympathy.

"Your nickname is a good one — you are lucky. Lucky to have a job, one that you were trained for. You are lucky to have a great family, an outstanding

assistant, good friends. What in the bloody hell is the matter with you? You're acting like a childish crybaby."

Before Larry could say anything, Ed answered his own question. "The problem with too many of your generation is you have no reference point. You have always had it good, and when circumstances get a little tough, you don't get tougher. You wilt, just like that Poa over there. You are pathetic.

"Here's my reference point," Ed went on. He used his right hand to unbutton the sleeve on his left arm.

"Here, see that? That's worth worrying about." Ed was furious. His left arm was in Larry's face. On the palm side of his arm, from his wrist to his elbow, was what looked like a big, bold red zipper. I knew immediately what it was — a scar from a serious injury of some kind. The center seam was half an inch across, and the cross scars — about a half inch apart, were somewhat smaller.

Larry's eyes were wide open and his skin was ashen.

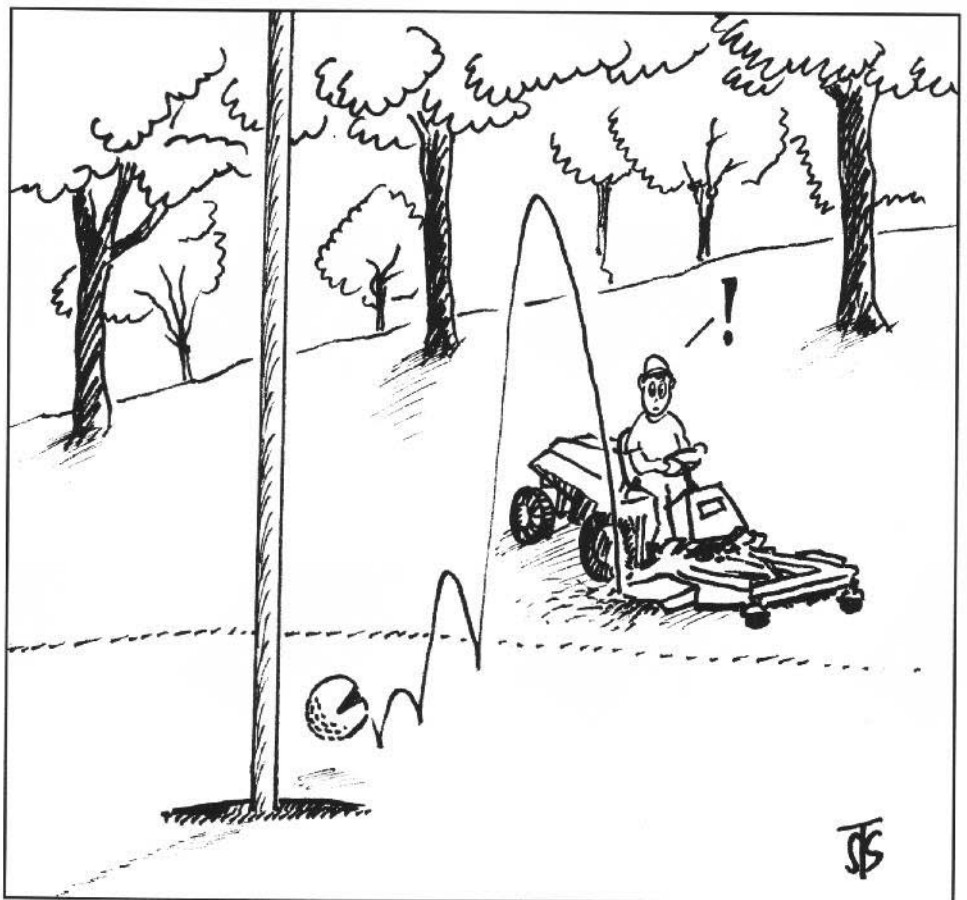
"Do you know how I got that, kid? I'll tell you how. I got stitched by a Chinese Communist AK-47 rifle somewhere between Phu Bai and Hue in 1969. I was walking point for my 101st

Airborne Division squad, in triple canopy jungle in the middle of the summer monsoon, and a North Vietnamese Army regular opened fire on me as I was reaching up to push my steel pot back from my forehead.

"He saw me first, but I saw him best. My face was the last thing that young soldier saw on this earth — he couldn't have been over 16.

"Every second of every minute of every hour of every day that I was in that war zone I was scared sheetless. For 12 months. I was homesick, dirty and tired all the time. My injury got me a medivac to Long Binh, surgery in Japan and in less than a month I was back with my unit, among the snakes and bugs and mud and stark fear of a combat zone. And my arm hurts me constantly. Always. It is a reminder, in no small way, not of how unlucky I was, but of how lucky I am to be alive today. Many of my Army buddies have their names on the black granite of the Vietnam War Veterans Memorial in Washington. I thank God every night before I sleep for giving me so much to be thankful for.

"You're worried? What about? Everything you worry about can be dealt with, if it even happens. Hell, you



worry about things that likely won't occur.

"You need to grow up." Ed turned and walked away, rolling his shirt sleeve back down and buttoning it.

I was startled and didn't know what to say. Larry hung his head.

Some of us had wondered why Steady always wore a long sleeve shirt, at work or away. We had noticed he held his left arm differently. He used it, but there was something about it. We just never asked.

I had tried several times to ask him about Nam, where he was and what he did and when he was there. After all, it was an experience we shared. But he wouldn't talk. So I just dropped it, figuring it was too painful for him.

A lot of things fell into place. When the GCSAA meeting was in D.C., Ed

and I went to the Vietnam War Memorial together. It was moving to me, but the tears rolled down his face. He wasn't crying and he didn't say a word.

Another time we were at a Packer game together, and a clown in front of us didn't take his hat off when the national anthem was played. Ed reached down, put his palm on the guy's head, crushed the hat and took it off his head for him. The guy turned around and started to object. "Shut your mouth and show some respect," was all Eddie had to say.

I knew now why, after these past couple of years, Ed has such a disgust for Bill Clinton. Clearly, Clinton's unwillingness to serve in the military was unsettling to Ed.

Ed had turned and started walking toward the shop. Larry said to me

"I'm really sorry" and started to run after Ed.

I sat there, wondering if what Ed had done was the right thing. Not that it mattered much now. I suppose maybe we all are a little too sensitive sometimes. Head problems — psychology to the sophisticated — are tricky and people suffering can go off the deep end.

I sat on the cart. Larry and Ed were walking together, and for a moment Eddie had put his arm around the young superintendent. I sighed the sound of relief, pretty sure Larry would have a whole new outlook, one that likely last for years to come.

I left them alone and drove back to the shop, taking a long route. This was a day the three of us wouldn't soon forget about. ♣

Entire Course gasping for air?

**Hanley's of Sun Prairie
will aerate it fast with
the *full course*
Ryan GA™ 30 Aerator.**



The GA™ 30 Aerator from Ryan can deliver green quality aeration to the entire course. Variable core spacing makes it as good on the fairways as it is on the greens and tees. You can aerate to a depth of 3 3/4" with this single piece of equipment. The 18 h.p. engine produces six m.p.h. speed for fast transport on and off the course.

Give your whole course the air it needs - Call Hanley's.

Hanley

Power Equipment & Turf Sales
641 W. Main Street • Sun Prairie, WI 53590
(608) 837-5111 • (608) 257-7815
Toll Free 1-800-279-1422

RANSOMES

RYAN
Driven to be the best.

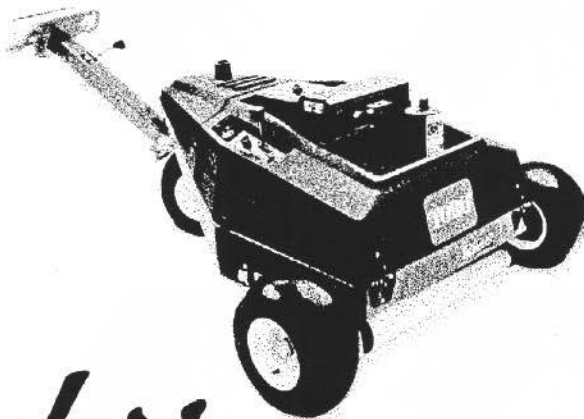
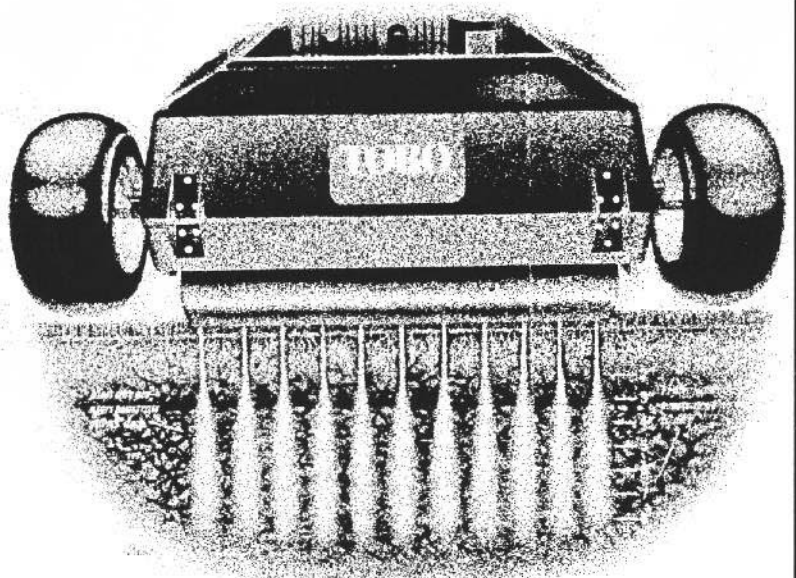
Reinders TURF EQUIPMENT

Aerate Without Disturbing Your Greens!

HydroJect 3000

Meet Toro's revolutionary Hydroject™ 3000. The only aerator that injects water at high velocity to penetrate compacted soils.

- The hydroject 3000 will penetrate 4 to 6 inches and beyond up to 20 inches if needed.
- No more soil cores
- Works on tees, fairways and anywhere you need aeration relief.
- No disturbed turf. No disrupted play.
- And the Hydroject is backed by Toro's Direct Today 48 Hour Part Delivery program.



The Professionals
That Keep You Cutting.

Reinders

TURF EQUIPMENT

13400 WATERTOWN PLANK ROAD, ELM GROVE WI 53122-0825

PHONES: LOCAL (414) 786-3301

800-782-3300