



Get a handful of sharp pencils and start working
on Professor Kussow's information lode
— It begins on page 39!



THE GRASS ROOTS

an official publication of the Wisconsin Golf Course Superintendents Association

Volume XIX, No. 6

November/December 1991

1991 Wisconsin Golf Turf Symposium Doak Hammers "Excessive" Maintenance

By Monroe S. Miller

"If a golf course needs to be in perfect condition for a golfer to play well, the design must be screwed up."

Tom Watson

Tom Doak, a golf course architect and author from Traverse City, Michigan, used the luncheon speaker's forum at this year's Wisconsin Golf Turf Symposium to criticize the maintenance extremes some players are demanding.

Those conditioning demands, coupled with heavy play, are straining some golf courses. He was also critical of some golf course architects whose designs demand excessive maintenance costs. These courses are out of reach to all but the very wealthy.

During his undergraduate study at Cornell University, Doak traveled extensively in the British Isles for a year. He visited and photographed 175 golf

courses. He shared his extensive photographic record of that year with the audience through slides.

"I've never met an American who, after playing a Scottish golf course, didn't absolutely love it," Doak said.

"But they don't want to see those playing conditions here."

Doak also blames TV golf for much of the crying for near perfect playing conditions. "Northern golfers watch tournaments on television all winter. They see golf courses in peak tournament condition and when their season comes around, they want the same conditions," he said.

Real estate projects have had a negative influence on golf courses, according to Doak. Too much emphasis is placed on appearance, too little on playability. The reason is a need to "sell memberships to pay for the place."

Session Chairmen

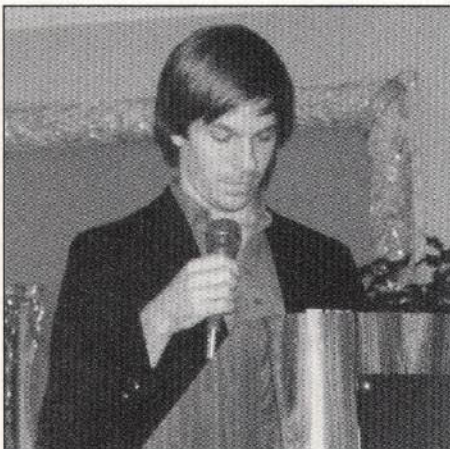
Kris Pinkerton, Tom Schwab and Randy Witt guided the educational sessions like pros.

The chair of each of the three sessions handles speaker introductions, keeps the program on time, makes necessary adjustments in meal and refreshment breaks and presents speaker mementos. Nice work by this crew.

Why Traffic?

The thrust of this year's theme was a reflection of a current problem in golf course management — traffic. The traffic takes the form of heavy play, cart traffic and excessive maintenance requirements.

Wear and tear are showing badly on older courses designed for a fraction of
(Continued on page 32)



Tom Doak



(Left to Right) Mike Vogt, Jerry Kershasky, Tony Coleman, and Jeff Parks