

# NOMINATIONS FOR WGCSEA FOR 1984

President:	Monroe S. Miller Superintendent Blackhawk Country Club Madison	Present: Vice-President
Vice-President	Danny H. Quast Superintendent Milwaukee Country Club Milwaukee	Present: Editor Grass Roots
Secretary	Willima R. Roberts Superintendent Sentry World Stevens Point	Present: Secretary
Treasurer	Donald Ferger Superintendent Country Club of Beloit Beloit	Present: Treasurer
Director (Two)	Allen Kress Superintendent Oneida Golf and Riding Club Green Bay	Present: Director
	Bruce Worzella Superintendent West Bend Country Club West Bend	Seeking first term
	Mark Keinert Assistant Superintendent North Hills Country Club Menomonee Falls	Seeking first term

Nominating Committee:  
 William Sell  
 Thomas R. Harrison  
 Wayne Otto  
 Roger C. Bell, Chairman

# The Grass Roots



**AN OFFICIAL PUBLICATION OF THE WISCONSIN GOLF COURSE SUPERINTENDENT ASSOCIATION**

VOLUME 2

SEPTEMBER/OCTOBER 1983

**Cover Picture:**

Nakoma Golf Club

**Editor:** Danny H. Quast  
8010 N. Range Line Road  
Milwaukee, Wisconsin 53209

## PRESIDENT'S MESSAGE

This is the time of year we all start looking at budgets, salaries, etc. for the coming year, and in doing so, we use our past as a gauge to prepare for the next fiscal period.

My reflection on the golf course business is that it has become so business oriented that many of us are struggling to do jobs of 4 or 5 people (bookkeeper, controller, purchasing agent, personnel manager, secretary, sales person).

We many times have not looked at it as overall, we have not expanded to meet these other challenges as other businesses have (example, computers, trained personnel, etc.).

The demand of our members/golfers are demands of excellence in turf. We know how to grow turf — what's getting in the way of getting our job done is the money and personnel to handle these other jobs and the support in getting them done.

I assert that we are leaving the age of replacing people with machines, that the pendulum has now swung back to emphasis on good personnel with the skills involving all realms of business.

It will be up to you to demand from your associations and other educational means the business training required for now and the future.

Regards,

Robert G. Boltz

# ANNOUNCING

## The Eighteenth Annual WISCONSIN GOLF TURF SYMPOSIUM

Dedicated to the Memory of O.J. Noer

<b>TOPIC:</b>	The Facts and Fallacies of POA ANNUA Management
<b>DATES:</b>	October 26 and 27, 1983
<b>PLACE:</b>	Pfister Hotel and Tower, Milwaukee, Wisconsin
<b>SPONSORS:</b>	Wisconsin Golf Course Superintendents Association and Milwaukee Metropolitan Sewerage District
<b>COST:</b>	\$40.00

Poa annua was the topic of our 1976 Symposium. Since that time we have seen radical changes in green, tee and fairway management practices. Chemicals, both pro and anti P.a. have come and gone. Poa annua remains with us and is still hotly debated in golf management discussions.

Your program committee decided it is time to open the can of worms again to keep us up to date on new techniques and chemicals being used today and provide an insight on future potentials for this ever-present plant. We hope the discussions will enable you to make enlightened decisions on go/no-go operations on your golf course.

Speakers this year are the cream of the crop. They have something important to say and can say it well. Adequate discussion time, both formal and informal, has been built into the program to allow you to clarify any points you feel necessary.

### SPECIAL NOTES

1. Make your room reservation by October 12, using the enclosed yellow form. There are other groups in the hotel and our rooms are held open only until this date.
2. Let US know if you intend to come by filling in the white card. It is very important for us to have an accurate count of the number of luncheons required.

### THE PLACE

The Pfister Hotel is in downtown Milwaukee at 424 East Wisconsin Avenue. Adjoining, sheltered parking is available in the hotel garage, entrance on Mason Street, one block north of Wisconsin Avenue. Limousine service is available from the airport.

### THE REGISTRATION FEE

Your registration fee \$40.00 includes

lunch, two cocktails and refreshments served Wednesday afternoon, coffee at the breaks and the Great Getaway on Thursday.

#### EXTRA SPECIAL

Remember that any funds in excess of expenses are contributed by the Wisconsin Golf Course Superintendents

Association to the O.J. Noer Research Foundation.

#### INFORMATION

For further information, contact any Association member, or Bob Welch, Milwaukee Metropolitan Sewerage District, 735 North Water Street, Milwaukee Wisconsin 53202. Telephone: (414) 225-2222.

## Tentative Program

### WISCONSIN GOLF TURF SYMPOSIUM

### October 26 and 27, 1983

#### Wednesday Morning Session

- 8:00 AM — Registration and Coffee
- 9:00 AM — Welcome and Opening Remarks  
Bob Boltz, President, Wisconsin GCSA
- 9:15 AM — Keynote Address  
*Poa annua* Management or Control:  
The Superintendents' Dilemma  
Stan Zontek, North Central Director, USGA Green Section
- 10:00 AM — Stretch
- 10:15 AM — Three approaches to *Poa annua* Management  
Ted Horton, Golf Course Superintendent  
Westchester Country Club, Port Chester, New York  
Monroe Miller, Golf Course Superintendent  
Blackhawk Country Club, Madison, Wisconsin  
Gordon Witteveen, Golf Course Superintendent  
Board of Trade Country Club, Woodbridge, Ontario
- 11:30 AM — Cocktails — Cash Bar
- 12:00 N — Luncheon Served
- 12:45 PM — Introductions  
James M. Latham, MMSD  
Special Guest Speaker  
Dr. Reinhold Aman  
Renown Linguistic Researcher, Lexicographer,  
and Publisher of his MALEDICTA Journal

#### Wednesday Afternoon Session

- 2:00 PM — Call to Order — Session Chairman  
Working with *Poa annua* in Wisconsin  
Dr. Gayle Worf — University of Wisconsin
- 2:45 PM — Break

(Continued on page 6)

# Wisconsin Golf Turf Symposium

(Continued from page 5)

- 3:00 PM — Potentials for *Poa annua* Improvement  
Dr. Don White — University of Minnesota
- 3:45 PM — General Discussion — All Wednesday Speakers
- 4:30 PM — Cocktails and Conversation

## Thursday Morning Session

- 9:00 AM — Call to Order — Session Chairman
- 9:15 AM — New Products for *Poa annua* Control  
Dr. Tom Perkins, Elanco, Inc.
- 10:00 AM — Suppression of Seedheads and Other Ideas  
Dr. Marty Petrovick, Cornell University
- 10:45 AM — Break
- 11:00 AM — The Holistic Approach to *Poa annua* Management  
Dr. Jim Watson — The Toro Company
- 11:45 PM — Final Discussion/Questions and Answers
- 12:15 PM — The Great Getaway  
Beer - Soda - Snacks

## Fast-acting nutrition for trees

That's what  
**STEMIX**<sup>®</sup>  
can do for  
your tree care  
program.

**DHD**  
TREE  
PRODUCTS, INC.



2467 SOUTH 170TH STREET  
NEW BERLIN, WI 53151  
(414) 784-3556

**Scotts  
most  
successful  
product is  
not available  
for sale...**



**only for advice and  
support... your  
ProTurf Tech Rep.**

*Dick Evenson*  
Technical Representative



*ProTurf Division*  
O M Scott & Sons

443 Woodview Drive  
Sun Prairie, Wisconsin 53590  
Phone: 608/837-6563

ROY G. ZEHREN

PH: (414) 242-5740

# NATURAL ATHLETIC TURF INC.

Specializing in

GOLF COURSE • RENOVATION • NEW COURT

TEES • GREENS • FAIRWAY TURFING • DRAINAGE  
SAND BUNKERS • RETAINING WALLS • NURSERY

ALSO

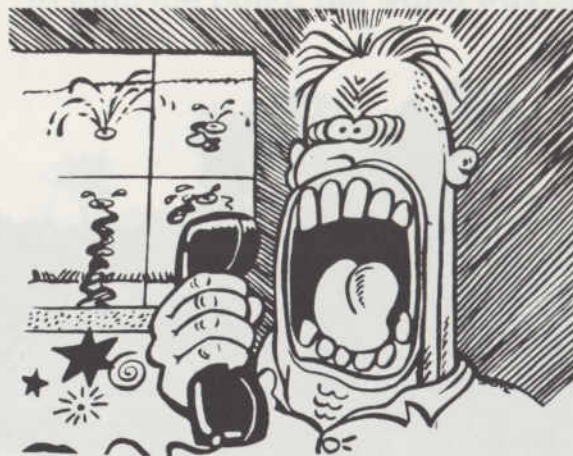
"PURR-WICK" & SAND SYSTEMS

ASTROTURF CH-4 "DRAG MATS"

BY CONTRACT OR "T & M" BASIS

11040 N. Buntrock Ave. Mequon, WI 53092

## SPRINKLER SYSTEM PROBLEM?



CALL REINDERS IRRIGATION SUPPLY

FOR

**RAIN-BIRD**

**TORO**

- PLASTIC PIPE
- DESIGN & SPECIFICATIONS
- PUMPS & CONTROLS
- REPAIR & SERVICE CONSULTATION

REINDERS IRRIGATION SUPPLY

13400 WATERTOWN PLANK ROAD

ELM GROVE, WIS. 53122

(414) 786-3163

# NEW BANOL™ TAKES THE WORRY OUT OF PYTHIUM.



New systemic action BANOL Turf Fungicide works in a low-cost program of prevention to eliminate the potential turf devastation of Pythium blight. Or BANOL can be used to stop Pythium once it starts. Of course, prevention is best!

BANOL has longer residual, up to 10-21 days, for less frequent applications and additional savings in labor, fuel and equipment. BANOL doesn't wash off like contact fungicides. Your irrigation program can be continued for good turf health and appearance. And BANOL is compatible in a tank mix with many other fungicides and insecticides.

For more information contact

REINDERS BROTHERS INC.  
13400 WATERTOWN PLANK RD.  
ELM GROVE, WISCONSIN 53122

## POLARIS E-Z-GO

**TEXTRON**

GARY MONFRE  
PARTS, SALES, SERVICE

E-Z-GO GOLF CARS

Waukesha, WI 53186  
414/542 7586  
414/344 0404

E-Z-GO CHICAGOLAND

24404 N. Hwy 12  
Lake Zurich, IL 60047  
(312) 438-5511

## Complete Tree Service



## EGELHOFF TREE SERVICE INC.

Thiensville, WI 242-3390



## **Nakoma Golf Club Report**

# **GOLF COURSE CONSTRUCTION**

by  
**Randall J. Smith, Supt.**

In 1980, Nakoma Golf Club which is one of the private Country Clubs in Madison, Wisconsin decided to update its 50+ year old golf course and to do so, wanted to proceed in an organized manner. One of our first steps was to create a Master Plan by which we could improve on various aspects of our course as funds, time, and membership desire permits. The firm of Killian and Nugent Golf Course Architects was selected to produce the Master Plan, hole by hole drawings, and detailed drawings and plans for specific areas as they are approved.

Priorities were established by need and

membership desire which lead us into one of the first major projects which included the construction of a small pond in front of the second green, a par 3 hole at Nakoma. The mens yardage from the white tees is 191 yards, with the ladies yardage being 116 from the red tee markers, a new tee also constructed in this project. A small 10 foot wide, 6 inch deep stagnant creek had been the water hazard for this green previously. The new hazard was designed as a somewhat free-formed shaped pond of approximately 4100 square feet and ranging in depth from 3 to 6 feet. The back shoreline along the green was to be

constructed with railroad ties with the remainder of the shoreline consisting of rock.

Once the completed plans were received following several meetings with the architects, the greens committee, and myself, the plans were submitted to the Board of Directors of Nakoma Golf Club for approval. Funds were allocated for the project and a permit was applied for from the Department of Natural Resources. A 30 day waiting period was required after a public notice with our intentions being published in our local newspaper. With no objections, our permit was issued.

We procured most of the supplies and materials for the project during the 30 day waiting period. Also during this period, we arranged for the contractors to come in to dig the pond and start the r.r. tie wall. The remainder of the work was to be accomplished by our own maintenance staff. A small temporary green was established in front of the proposed construction.

On May 1st, 1982 our project began when we moved in a wide tracked backhoe to begin digging the pond. On this part of our golf course there exists about 2 feet of peat layered over an organic clay which is basically the water table. This causes some unique problems in that there is little support for equipment to move over the terrain. This is why we had selected the wide tracked backhoe as well as a wide tracked dozer later in the construction to do the land forms.

The first part of the excavation was completed in a manner to erect the wall along the front of the green. A decision was made to use the more esthetic maxi-tie instead of used rail road ties. These ties were placed vertically in a large trench, each one fastened to the adjacent one with at least 3-10" barn spikes and with every 10th tie being secured with a threaded rod back into a concrete "deadman" located about 6 feet back into the bank. Approximately 200 maxi-ties were used for this part of the shoreline. Once in place, about 4 feet of clay was

formed in front of the ties and the rest of the 600 cubic yards of material was removed to form the pond. The water was continu-



ously pumped from the pond site for visibility and workability. The bottom and banks were carefully shaped to conform to the architects and D.N.R. specifications. This portion of the construction took about a week to accomplish.

The pond at this point was basically formed with a stockpile of about 600 yards of material setting next to the site to dry out. Our staff then placed Mirafi filter fabric along the remainder of the shoreline not constructed with the maxi-ties. The filter cloth covers the bank from the surface of the surrounding ground down into the pond — 15 feet — which is the width of the fabric. This material is used to stabilize the bank for erosion control and is also used to "float" the rocks (the rocks being more dense would normally sink into the less dense organic peat) which are used to establish the shoreline. A layer of 3-6" of 3" limestone (roadbed grade) was moved into place using cushman trucksters running on temporary plywood roads. This rock material was intended to be the shore but a sample of field stone 3"-10" was brought in as an example and a decision was made to use the field stone for the top layer and esthetics.

The field stones were unable to be purchased economically so we arranged to hand pick them from nearby farms. An

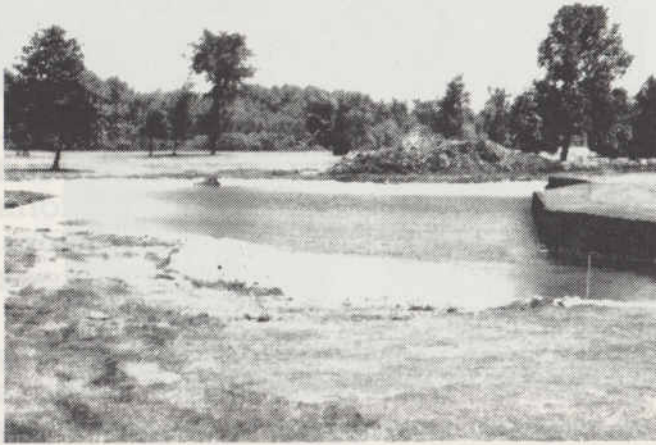
(Continued on page 10)



## Golf Course Construction

(Continued from page 9)

estimated 110-140 tons of hand picked rocks were brought in and transferred to small vehicles again running on plywood roads and delivered to the site. Once dumped, the rocks were hand laid into place. Most of the rocks were in place by Memorial Day, however due to much rain we were allowed to use the temporary green until the 4th of July tournaments to



afford us the additional time to complete the project.

A dozer was brought in to rough grade the bank of the green and around the pond, while we were installing a steel edging to designate specifically the water hazard edge rather than using colored stakes. Our staff then fine graded the area and sodded the entire construction site around the pond and green utilizing both our own sod and some purchased sod.

With the completion of the construction, the hole was reopened for the 4th of July tournaments. The cost of the project was close to \$11,000 which was twice the original estimate. This was due to a number of factors: using maxi-ties instead of used rail road ties, using field stone in

addition to the 3" limestone for shoreline, extra contracted equipment due to time restraints and wet conditions, and additional labor and materials beyond the original specifications.

The finished project met some opposition especially when 3 of the first 4 members were in the water after the hole was open. Similar results occurred throughout the tournaments and the following weeks. As golfers have learned to play the hole according to their abilities, however, we have been hearing much more satisfying comments.



### MILAEGER Well and Pump Co.

INDUSTRIES MUNICIPALITIES SUBDIVISIONS

- Deep Well Drilling and Pump Installation
- Well Development by Acidizing & Shooting
- All Makes of Pumps Repaired
- 24 Hour Service
- TONKA • Water Treatment Equipment

**BYRON JACKSON PUMPS**  
Division of Borg Warner Corporation

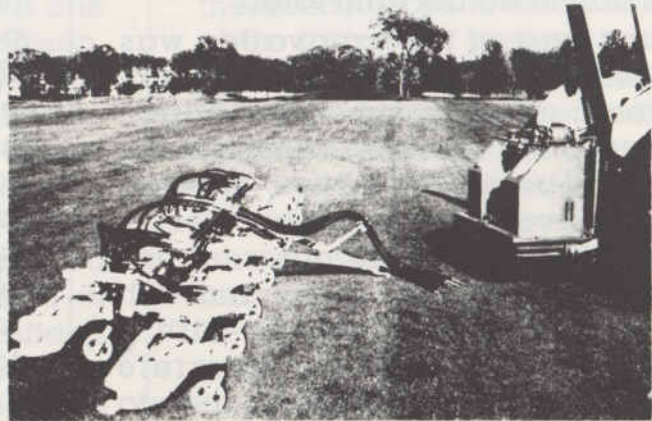
Line Shaft Turbine Pumps and Submersible Pumps  
to 500 HP and 1,000 ft. Settings  
Servicing Wisconsin and Illinois for Over

20950 Enterprise Ave.  
Brookfield, WI 53005  
(414) 784-3960

60 Years

640 Pearson Street  
Des Plaines, ILL 60018  
(312) 296-8707

### ROSEMAN HYDRA POWER MOWING REELS FOR THE SUPER CUT



### NORTHERN TURF EQUIPMENT, INC.

Pardeeville, WI  
(608) 429-3402

Chippewa Falls, WI  
(715) 834-8707