

Reinders

TURF EQUIPMENT — IRRIGATION SUPPLIES

13400 W. WATERTOWN PLANK RD., • ELM GROVE, WIS. 53122
PHONES: SALES (414) 786-3163 — OFFICE (414) 786-3300



Introducing the ultimate in turf cutting precision, the Toro HTM 175.
Distributors of:

par ex
PROFESSIONAL PRODUCTS



Diamond
Shamrock

BRAND®
Embark 2-S
PLANT GROWTH REGULATOR
for Turf

GORDON'S
PROFESSIONAL TURF PRODUCTS

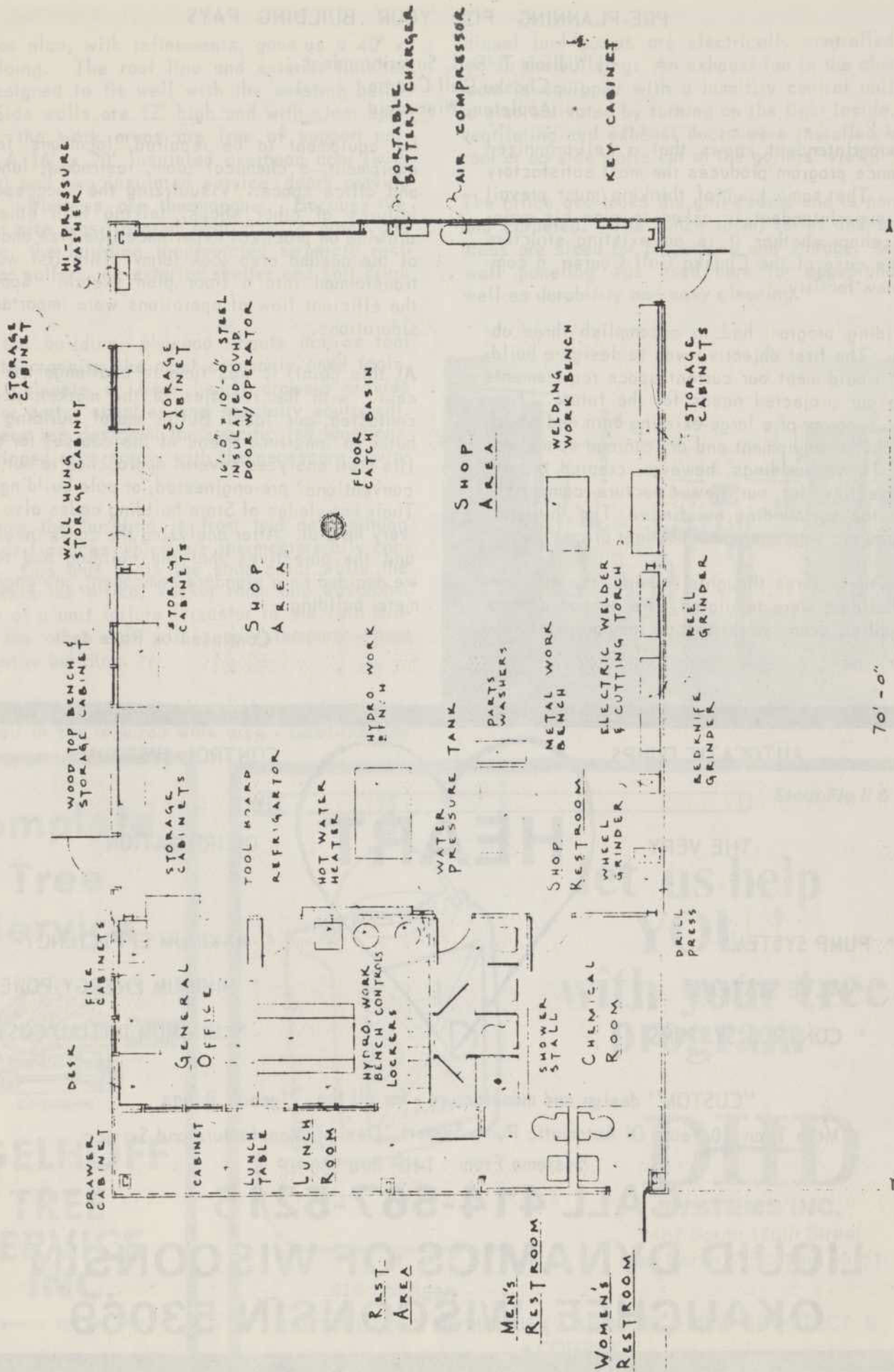
TORO®

Myers

TUCO

Foley®

CUSHMAN RYAN®



70'-0"

PRE-PLANNING FOR YOUR BUILDING PAYS

by William T. Sell, Superintendent
Chaska Golf Course
Appleton, Wisconsin

Every superintendent knows that a well-organized maintenance program produces the most satisfactory results. The same kind of thinking must prevail when a superintendent is asked to plan his maintenance shop—whether it is an existing structure or, in the case of the Chaska Golf Course, a completely new facility.

Our building program had to accomplish three objectives. The first objective was to design a building that would meet our current space requirements but also our projected needs for the future. Fortunately, because of a large existing barn and smaller farm sheds, equipment and dry storage space was ample. These buildings, however, created the second objective for our new structure—compatibility with the surrounding buildings. The third factor, of course, was a maximum budget price.

Keeping these three thoughts in mind, the functions of the building were tabulated. We needed a parts and supplies area, work space, temporary storage

for equipment to be repaired, locations for shop equipment, a chemical room, restrooms, lunchroom and office space. Visualizing the successes and failures of other shops, talking with others and drawing on practical experience, the size and shapes of the needed area took form. This list was then transformed into a floor plan sketch. Space and the efficient flow of operations were important considerations.

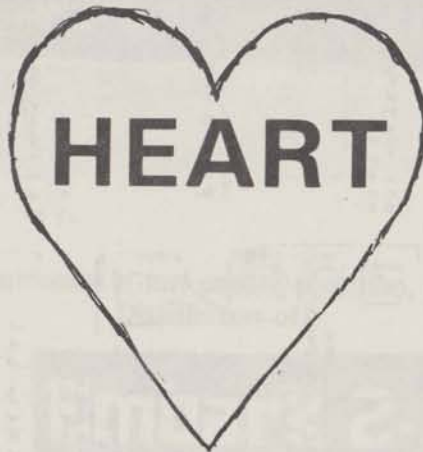
At this point, it was time to challenge the "concept" with the realities of the marketplace. We contacted our local Butler metal building distributor (a long-time friend of the course) for advice. His staff analyzed several approaches to our needs—conventional pre-engineered, or pole building types. Their knowledge of State building codes also proved very helpful. After analyzing the costs involved and the objectives that the building had to meet, we decided on a standard component, pre-engineered metal building.

Continued on Page 4

AUTOMATIC PUMPS

THE VERY

- * PUMP SYSTEMS
- * VALVE SYSTEMS
- * CONTROL SYSTEMS



CONTROL SYSTEMS

OF IRRIGATION

- * MAXIMUM EFFICIENCY
- * MINIMUM ENERGY-POWER
- * MINIMUM INITIAL COST

"CUSTOM" design and manufacture - for all the "good" things

More Than 30-Years Of Automatic Pump System Design, Manufacture and Service
Systems From 1-HP thru 500-HP

CALL 414-567-5215

**LIQUID DYNAMICS OF WISCONSIN
OKAUCHEE, WISCONSIN 53069**

The floor plan, with refinements, gave us a 40' x 70' building. The roof line and exterior finishes were designed to fit well with the existing buildings. Side walls are 12' high and with clear span framing, the work areas are free of support columns. A 16' x 20' insulated overhead door (with operator) and two insulated service doors provide access. Windows are thermopane. Because the building site was located near our 14 green and 15th tee, the building incorporated separate rest-rooms for golfers, an exterior shelter and soft drink machine.

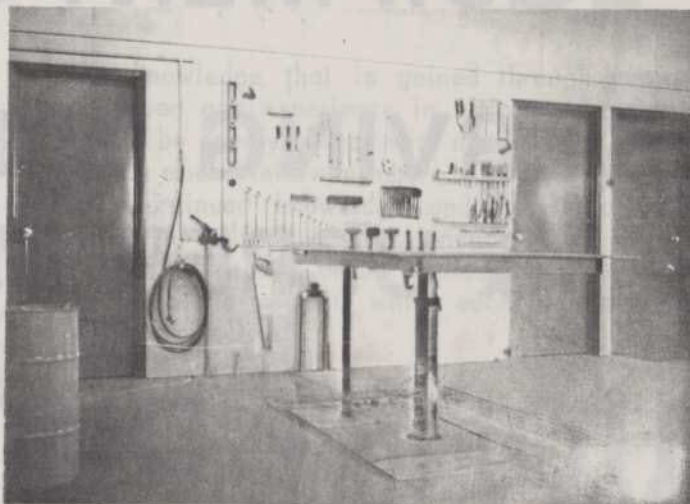
Inside the building, plywood sheets act as tool boards to organize the most commonly used tools. Storage cabinets or work bench drawers provide space for parts, supplies and specialty equipment. Shop areas are designed for specific job functions and equipped accordingly with the necessary equipment.

Heat from the building is from two ceiling-hung forced air furnaces which are thermostatically controlled. One unit heats the shop area, while the other heats the office, locker room and washroom. In case of a unit failure (disaster in the cold Midwest), the other unit will supply temporary heat to the entire building.

The lighting system is wired so lights can be turned on and off in the required work area. Gasoline and

diesel fuel pumps are electrically controlled from within the building. An exhaust fan in the chemical room is equipped with a humidity control unit and is also activated by turning on the light inside. All ventilating and exhaust ducts were installed in the roof or on side walls out of the golfers' view.

The office overlooks the golf course and is paneled and carpeted. The lunch room, toilet and shower areas are sized for proper use and storage. Marlite wall paneling was used here for appearance as well as durability and easy cleaning.



Complete Tree Service



EGELHOFF TREE SERVICE INC.

Thiensville, WI 242-3390



Stedi Flo II & V

let us help
YOU!
with your tree
program

DHD

SYSTEMS INC.

2467 South 170th Street
New Berlin, Wisconsin 53151

414-784-3556

DISTRIBUTORS OF MAUGET • ARBOTECT 20S • ARBOTECT S
• CORREX

HEADQUARTERS

FOR

**TURF MAINTENANCE,
EQUIPMENT & SUPPLIES**

**"SERVING N.E. WISCONSIN
& UPPER MICHIGAN"**

**HORST DISTRIBUTING
INC.**

**444 N. Madison Street,
Chilton, Wisconsin 53014**

PHONE 414-849-2341

**"Service Is Not Our Motto,
It's Our Business"**

LY-MAR

LTD.

DISTRIBUTOR

top name golf course
chemicals & supplies

8332 NORTH SANTA MONICA BLVD.
MILWAUKEE, WI 53217 (414) 352-9464

Acti-dione and Proxol TURF Products Programmed Disease and Insect Control

DON MASKE

AGRICULTURAL CHEMICAL SALES SPECIALIST

HOME: 824 PUTNAM DRIVE, LOCKPORT, ILLINOIS 60441
815/638-8154

TUCO DIVISION OF THE UPJOHN COMPANY



TUCO

Division of
The Upjohn Company

Creed

WISCONSIN GOLF COURSE
SUPERINTENDENTS ASSOCIATION

We, the members of the Wisconsin Golf Course Superintendents Association, depend upon the unity, as well as the professionalism of our membership to cultivate and maintain superior golf turf as well as golf atmosphere.

The knowledge that is gained through continued education and experience in turfgrass maintenance should be openly shared with mutual trust and camaraderie among fellow members. To strive for further and continued knowledge and excellence in all phases of golf course maintenance is our ambition. The Proud legacy of our profession depends upon the pride and integrity which each individual takes within himself.

 **NAPB**
NORTH AMERICAN
PLANT BREEDERS

REGAL

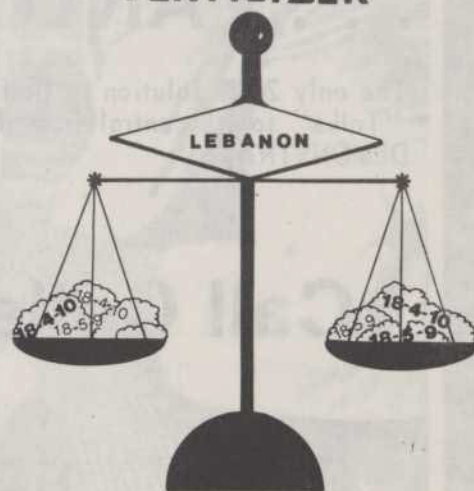
TURF-TYPE
PERENNIAL
RYEGRASS



- Incomparable color
Darkest green of any perennial
- Excellent texture
- Cuts clean and easy
- Reduced disease risks
- Good heat tolerance
and cold-hardiness

North American Plant Breeders
P.O. Box 2955
Mission, Kansas 66205
913/384-4940

COUNTRY CLUB THE BALANCED FERTILIZER



.....a valuable asset....
in growing good turf

FOR MORE INFORMATION CALL
LEBANON CHEMICAL CORP.
P.O. Box 647 Danville, IL 61832



Royal Coach Sprinklers

AUTHORIZED EXCLUSIVE DISTRIBUTOR

**"BRAND" NAME
SPRINKLER EQUIPMENT**

Royal Coach
Buckner
Nelson-Moody
RainBird
Safe-T-Lawn
Weather-Matic
Toro

**PVC, POLY & METAL
PIPE & FITTINGS**

Clow
Cresline
Plastiline
Flo-Controls
Smith-Blair

**ACCESSORIES &
SPECIAL EQUIPMENT**

Pumps & Motors
Automatic Control
Sand Separators
Valves
Valve Boxes
Hose & Fittings

AUTOMATIC "PACKAGE" PUMP SYSTEMS

... AND "THE COMPUTER"

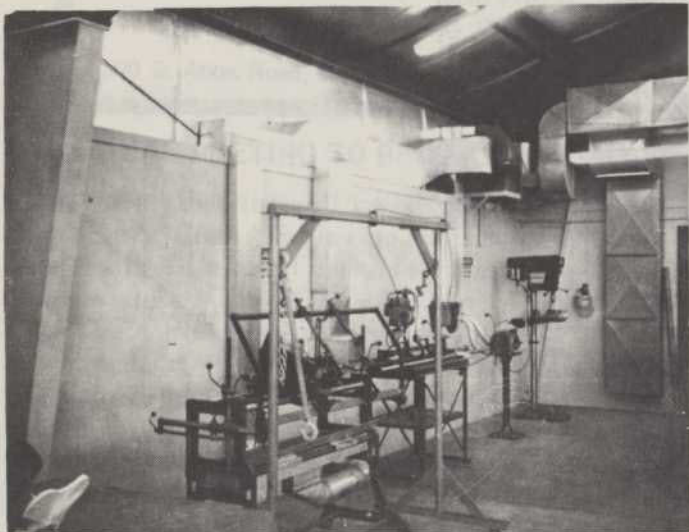
The only 200% solution to Golf Course Irrigation Control. The ROYAL COACH Computer "Talks" to its central from the field terminals - The field "Talks" back. WE WILL DEMONSTRATE!

Call Collect 414-645-2223

**BADGER TURF
& IRRIGATION SUPPLY, INC.**

3727 West National Avenue - Milwaukee, Wisconsin 53215

Defining our goals, talking and observing, and working closely with our builder helped us meet the three objectives of our building program. This planning not only organized our thinking and assigned priorities to all the items we felt were desirable, but it also created enough savings to add two important pieces of shop equipment. The first was an effective grinding exhaust system that removes



The Golf Course Choice in Wisconsin and the World



Since 1926

MILWAUKEE SEWERAGE COMMISSION
8500 South 5th Ave. Oak Creek, WI 53154

tailings to the outside. It now makes a long and tedious job bearable. The second bonus was a hydraulic work bench built from spare parts. This bench has eliminated many problems, giving us easier access to large, heavy machines and improving maintenance safety.

Pre-construction planning gave us more than our three objectives. But most importantly, it gave us an opportunity to think through our entire maintenance program and what the future may bring. Planning has really paid off.

Nutrient deficiencies, weeds, diseases, thin turf, insects.

For the superintendent
who has everything . . . or
anything . . . or who just wants
to make a good thing better . . .
ProTurf offers research fested,
golf course proven professional
turf products.

Just give me a call.



A division of
G. M. Scott & Son

DICK EVENSON
608/837-6563
443 Woodview Drive
Sun Prairie, Wis.



these great names...

baron

RAMBI

Touchdown

PENNCROSS

PENNEAGLE

Majestic

TRI PLEX BLUE

Jamestown

Diplomat

Yorktown

Yorktown II

TRI PLEX RYE

help make us the best name in turf.

LK

LOFT-KELLOGG SEED, INC.

P.O. Box 684 / 322 East Florida St., Milwaukee, Wisconsin 53201 • (414) 276-0373
