

# Reinders

TURF EQUIPMENT — IRRIGATION SUPPLIES

13400 W. WATERTOWN PLANK RD., • ELM GROVE, WIS. 53122

PHONES: SALES (414) 786-3163 — OFFICE (414) 786-3300



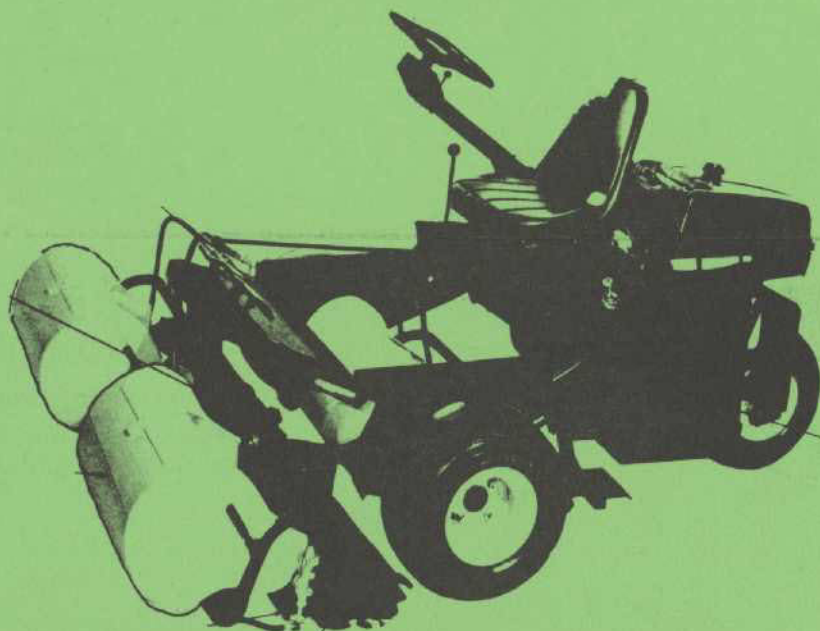
**Diamond  
Shamrock**



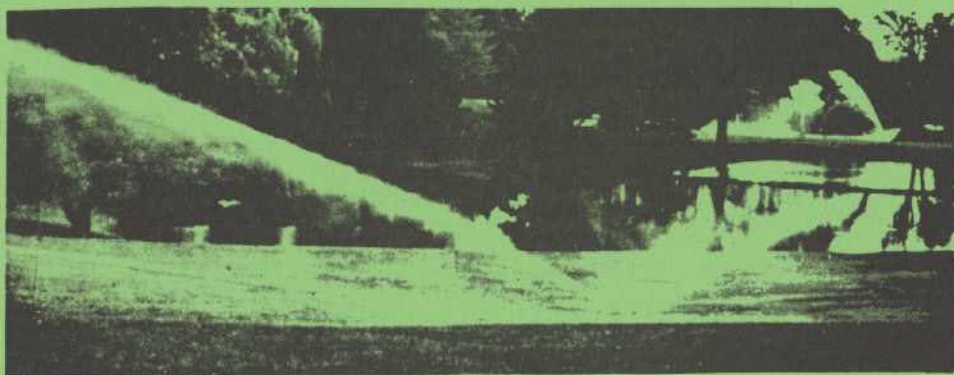
**Myers**



**Green Machine®**



**GORDON'S**  
PROFESSIONAL TURF PRODUCTS



**PAR-GX**  
PROFESSIONAL PRODUCTS

# CUSHMAN RYAN®



# POSITION AVAILABLE

Assistant Superintendent, South Hills Country Club.

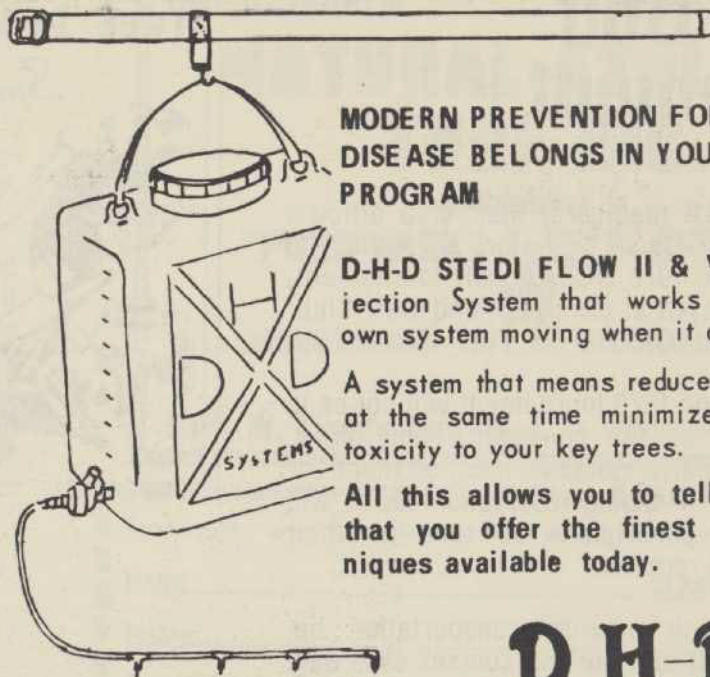
Contact: Marty Mikulski  
Golf Course Superintendent  
(414) 922-8455

## For Sale:

- 1) One seven gang Toro mowing unit, excellent condition.....\$1500.00
- 2) One Ryan Rollaire power roller, good condition.....\$400.00

For further information contact:

DON SCHIEFELBEIN  
Box A,  
Hillsboro, Wisconsin 54734  
(608) 489-2341



## MODERN PREVENTION FOR DUTCH ELM DISEASE BELONGS IN YOUR TREE PROGRAM

D-H-D STEDI FLOW II & V offers an injection System that works with the trees own system moving when it does.

A system that means reduced wounding and at the same time minimizes chances of toxicity to your key trees.

All this allows you to tell your members that you offer the finest injection techniques available today.

# D H-D

INJECTION SYSTEMS INC.

2467 So. 170th Street - New Berlin, Wisconsin 53151  
Phone 414-784-3556

WISCONSIN

# Turf

## EQUIPMENT CORPORATION

1917 W. COURT STREET • 752-8766 • BOX 708 • JANESVILLE, WISCONSIN 53545  
21520 W. GREENFIELD AVE. • 414 - 544-6421 • NEW BERLIN, WISCONSIN 53151

FROM HAULING CHEMICALS  
TO CARRYING PEOPLE....  
from climbing hills to  
plowing snow...the Jacob-  
sen UV - 4 is designed  
to handle a variety of  
utility vehicle needs.

Already used by railroads,  
airports, farms, ranches,  
riding stables, real  
estate developments, mu-  
nicipalities, parks, golf  
courses, cemeteries, and  
many other satisfied cus-  
tomers.





# GCSA Golf Tournament

All GCSAA members, their club officials and guests, and GCSAA exhibitors are invited to participate in the 1979 GCSAA golf tournament, which will be played at the Sea Island Golf Club, St. Simons Island, Ga.

Because the 1979 tournament will not be in the same area as the conference and show, separate housing arrangements must be made for the tournament. Housing reservation forms will be sent to all participants as soon as their registrations are received.

GCSAA will provide transportation between the Cloister and the golf courses each day.

Chairman of the GCSAA Tournament Committee is GCSAA Director Michael R. Bavier, CGCS, Palatine, ILL. The vice chairman is GCSAA Director Richard H. Eichner, CGCS, North Hollywood, Calif. Committee members are Gary Fox, Escondido, Calif.; Thomas C. Hamilton, Dallas, Texas; Frank E. Lamphier, Weston, Conn.; John P. Leeper, CGCS, Fort Wayne, Ind.; Robert A. Moore, Pennsauken, N.J.; Randy Nichols, Roswell, Ga.; Donald J. Pakkala, CGCS, Gladwyne, Pa.; Roy K. Stoddard, CGCS, San Jacinto, Calif.; Rebecca Tate, Frankfort, Mich.; and Donald W. Westfall, Topeka, Kan.

This tournament is 36-hole, stroke play, **OPEN TO A MAXIMUM OF 200 GCSAA members, their club officials and guests, and to GCSAA exhibitors.** USGA rules will apply except where modified by local rules. **This year's tournament is a two-day, shotgun start event.** If the tournament is interrupted by inclement weather, 18-hole scores will determine winners. Everyone playing net flights must have proof of his December 1978 handicaps from his golf club affiliation or other USGA-approved handicap system, or provide an average score on the TOURNAMENT REGISTRATION FORM.

Sea Island Golf Club is surrounded on three sides by water and contains large marshes and tidal streams and lakes. The club is known for its deep bunkers and outstanding layout - it is located on the site of an authentic, carefully maintained antebellum plantation. The ladies' tournament will be held at the Island Club, adjacent to the Sea Island Golf Club. It also features expanses of marshland and lakes.

continued on next page

## TREE PLANTING

*Specialists*



- Trees Moved up to 10" Diameter
- Commercial Planting
- Shade & Evergreen Trees
- Complete line of Nursery Stock
- Experienced with Golf Course Planting
- Fully Insured Free Estimates

## TALL TREES INC.

LARGE TREES PLANTED  
FOR INSTANT SHADE

Call **715-344-3669**

P.O. Box 397, Stevens Point, WI 54481



## Acti-dione and Proxol<sup>®</sup> TURF Products Programmed Disease and Insect Control

DON MASKE

AGRICULTURAL CHEMICAL SALES SPECIALIST

HOME: 924 PUTNAM DRIVE, LOCKPORT, ILLINOIS 60461  
815/838-8164

**TUCO**

DIVISION OF THE UPJOHN COMPANY



**TUCO**

Division of  
The Upjohn Company

## The Golf Course Choice in Wisconsin and the World



Since 1926

MILWAUKEE SEWERAGE COMMISSION  
8500 South 5th Ave. Oak Creek, WI 53154



# Position Information Service

Once again, the WISCONSIN GOLF COURSE SUPERINTENDENTS ASSOCIATION is offering Position Information Service registration to all dues paying members.

It will be necessary for all interested members to fill out the attached card and return it to the Secretary-Treasurer in order to receive the information. Persons registering will then be eligible to receive the details of position openings as they are processed by the Secretary-Treasurer's office.

All replies should be mailed directly to:

Jeff Bottensek, CGCS  
Secretary-Treasurer  
WGCSA  
1330 Ware Street  
P.O. Box 274  
Waupaca, Wisconsin 54981

ROY G. ZEHREN

PH: 414/242-5740

## NATURAL ATHLETIC TURF INC.

*Specializing in*  
**"PURR-WICK" TEES & GREENS**  
and  
**conventional turf & erosion control**

5322 W. County Line Rd.

Mequon, WI 53902

Please register me as a participant in the Position Information Service.

NAME \_\_\_\_\_ CLASS \_\_\_\_\_

Position \_\_\_\_\_

Business Address \_\_\_\_\_

Bus. Phone \_\_\_\_\_

Home Address \_\_\_\_\_

Home Phone \_\_\_\_\_

Please address all correspondence to:

Business \_\_\_\_\_

Home \_\_\_\_\_

## Nutrient deficiencies, weeds, diseases, thin turf, insects.

For the superintendent  
who has everything . . . or  
anything . . . or who just wants  
to make a good thing better . . .  
ProTurf offers research tested,  
golf course proven professional  
turf products.

Just give me a call.



A division of  
Q. M. Scott & Sons

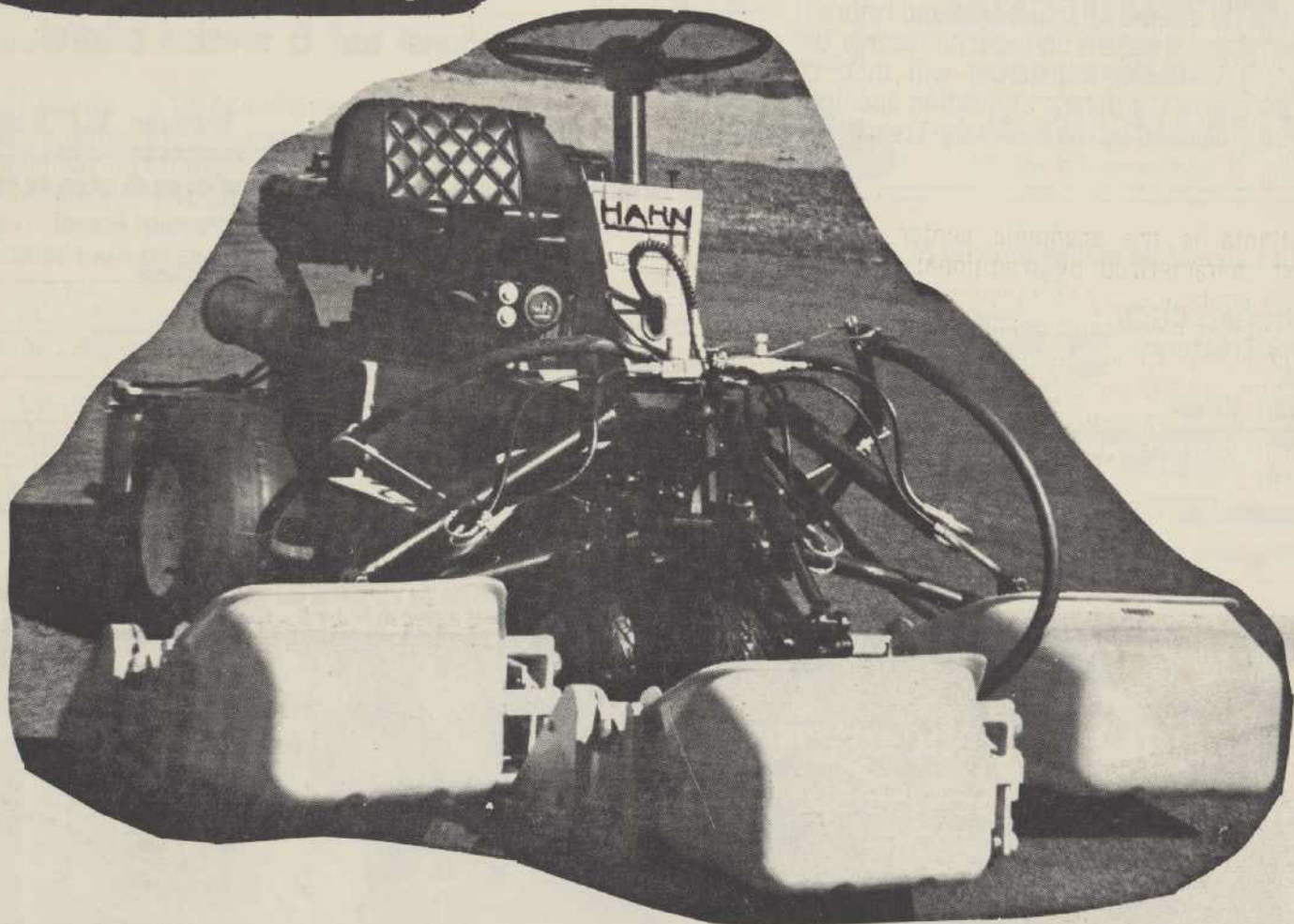
DICK EVENSON  
608/837-6563  
443 Woodview Drive  
Sun Prairie, Wis.





# Time is money on a golf course

That's why you need the  
Hahn Tournament Triplex



## FOUR MACHINES IN ONE.

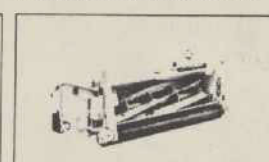
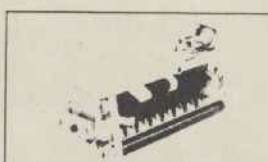
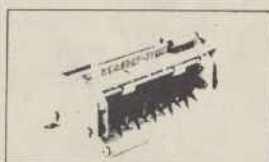
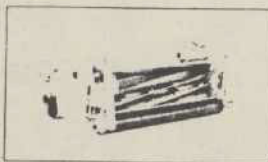
Heads change in just three minutes from greensmowing to verti-cutting, to spiking, to tee mowing, Hahn's quick-change, cable-driven heads make conversion easy and fast.

**Tournament Greensmower:**  
a clip of tournament precision. Each head is up front for maximum visibility and can be lifted individually. Cable drive ends hydraulic oil leaks on green.

**Triplex Vibra-Spiker:**  
high frequency vibration achieves good penetration. The size and speed of coverage allows frequent regular spiking, creating more healthy greens.

**Triplex Verti-Cutter:**  
patented, thin offset blades remove thatch and grain quickly and easily.

**Triplex Utility Mower:**  
ideal for approach and tee mowing. Variable speed permits cutting of all grasses. Ideal general purpose mower.



## NORTHERN TURF EQUIPMENT, INC.

Route 1, Box 152  
Pardeeville, WI 53954 Phone: 608/429-3402

Route 1, Box 89  
Chippewa Falls, WI 54729 Phone: 715/834-8707



# GCSAA Travels to Atlanta

Atlanta-- a young, exciting city with more than 150 years of history -- is the site of the 50th International Turfgrass Conference and Show, sponsored by the Golf Course Superintendents Association of America, Feb. 4-9.

A busy week awaits the more than 5,500 GCSAA members, exhibitors, speakers and representatives from allied associations, government, industry and education who will attend the conference and show in Atlanta's Georgia World Congress Center. But visitors also will find time to enjoy the excitement of the city and numerous social events.

Atlanta is the economic center of the Southeast characterized by traditional southern charm and contemporary cosmopolitan style. Its fine golf courses have traditionally tied the city to the golfing world. Atlanta is a past site of the U.S. Open Championship and a future site of the PGA Championship. Many of Atlanta's golf courses have been used as qualifying sites for major tournaments.

## Sisco Offers

THE FINEST TURF IRRIGATION SYSTEM... custom designed to meet your Club's specific needs.

Whatever your needs, we can furnish you a complete line of quality products and all the technical help you will ever need.

WE'RE THE EXPERTS IN ALL KINDS OF GOLF COURSE SYSTEMS!

Sprinkler Irrigation Supply Co. A division of A.J. Miller Inc.  
1738 Armitage Court, Addison, Ill. 60101

Call your SISCO man today!  
(312) 629-7730

Buckner®  
**Johns-Manville**

DERBY

HIGHLIGHT

## SELECT THE GRASSES WITH A TRACK RECORD

- \* DERBY • turf-type perennial ryegrass
- \* HIGHLIGHT - world champion Chewings-type fine fescue
- \* EMERALD - the superior creeping bent that blends beautifully with Penncross
- \* SCENIC - a top-notch among the Kentucky bluegrasses

## B & A SALES

Bob Gero

P.O. Box 386 Columbus, Wisconsin 53925  
(414) 623-2529

EMERALD

SCENIC

Visitors to the conference and show will not have to look far for entertainment. An informal get-acquainted party will be Monday night. The annual banquet Thursday evening will feature singer Kaye Hart and comedian Glenn Ash, who has entertained previous GCSAA banquet audiences.

A ladies' program also has been planned which will include a tour of some of Atlanta's most magnificent homes, a landmark tour that includes the Governor's Mansion and the Atlanta Historical Society's Swan House and a tour of Stone Mountain Park which features one of the world's largest stone relief carvings.

## MEET YOUR SPRAYER NEEDS EXACTLY!



TRAILER MOUNTED

SKID MOUNTED

### ACCESSORIES



GREENS BOOM



HOSE REEL



G-GUN



SCREW TYPE JACK

ALSO CHOOSE FROM FIBERGLASS TANKS/MECHANICAL AGITATION/PUMPS AND ENGINES/BOOMS/HAND GUNS, ETC. WRITE OR CALL:

Special Products Division  
**HANSON EQUIPMENT CO.**

301 CHARLES ST., SO. BELOIT, IL 61080  
815/389-2261

## Turf Management Supply

DISTRIBUTORS OF QUALITY FERTILIZERS, SEEDS,  
GOLF COURSE AND LANDSCAPE SUPPLIES

R2 NORWAY ROAD  
SUN PRAIRIE, WISCONSIN 53590  
Phone (608) 837-5598





# MILAEGER Well and Pump Co.

INDUSTRIES MUNICIPALITIES SUBDIVISIONS

- Deep Well Drilling and Pump Installation
- Well Development by Acidizing & Shooting
- All Makes of Pumps Repaired
- 24 Hour Service
- TONKA • Water Treatment Equipment

**BYRON JACKSON PUMPS**  
Division of Borg Warner Corporation

Line Shaft Turbine Pumps and Submersible Pumps  
to 500 HP and 1,000 ft. Settings

*Servicing Wisconsin and Illinois for Over  
60 Years.*

20950 Enterprise Ave.  
Brookfield, WI 53005  
(414) 784-3960

640 Pearson Street  
Des Plaines, ILL 60016  
(312) 296-8707

Prior to the conference, the association will sponsor eight in-depth seminars: **Principles of Landscape; Principles of Nutrition; Personnel; Irrigation Equipment/Operations; Insects; Weeds Cardiopulmonary Resuscitation Training; and Turf Disease Identification.**

The conference also will be preceded by GCSAA's 40th annual golf tournament at Sea Island Golf Club and the Island Club, St. Simons Island, Ga.

Other features of the event include social events, a visit to three Atlanta area golf courses and the ladies' program which includes a choice of tours.



## GCSAA Prepares for 50th Conference and Show

One hundred and thirty-three hours of educational sessions and seminars and a three-day turfgrass trade show will highlight the 50th International Turfgrass Conference and Show, sponsored by the Golf Course Superintendents Association of America in Atlanta Feb. 4-9. The theme for the annual gathering is "Appraising Our Past -- Discovering Our Future."

This year's show will be the largest in GCSAA's history with more exhibit space sold by November than the total sold for the 1978 show. Attendance is expected to exceed last year's record-breaking 5,500. More than 200 companies, nearly 30 of them new to GCSAA's show, have contracted for booths.

Seventy-seven speakers from universities, industry and the turfgrass field will present up-to-date information on a variety of topics relating to the needs of turfgrass managers. Session topics include: **The Way of Change**, a look at new trends in golf course management; **Water -- What's the Future?**; **Turf Management -- North**; **Turf Management -- South**; **Public Course Management**; **Research -- Appraising Discoveries**; **Are You an Executive?**; **Conflict Management**; **Course Management**; and a panel discussion of greens construction, sand topdressing and flood damage repair.

**Lake Shore Sand & Stone -**  
DIVISION OF

**CONSTRUCTION  
AGGREGATES CORP.**



**515 W. Canal Street  
Milwaukee, Wisconsin 53203**

**TELEPHONE: 414-271-0625**

**JAMES D. COOPER, MGR.**

**WASHED AND TREATED  
LAKE SAND  
FOR TOP DRESSING**

**CALL "JIM"  
FOR PRICES AND SPECIFICATIONS**



## JUST A REMINDER

As previously announced, the Wisconsin Golf Course Superintendents Association will hold its annual Dinner-Dance on Saturday, December 9, 1978 at the Pioneer Motor Inn in Oshkosh, Wisconsin. Check in time at the motel is after 4:00 p.m. on the 9th. Cocktails will be at 6:30 p.m. and dinner will be served at 7:30 p.m. Dancing to the house band will follow in the "Caboose Lounge"

The cost of the Dinner-Dance is \$32.00 per couple including tax and tip. Room cost per couple is \$32.40 including tax.

Plan to attend this ever-popular event.

**SUPPORT THE GCSAA  
SCHOLARSHIP  
AND RESEARCH FUND**

**LA PLANT**  
IRRIGATION CO., INC.

2651 SO. ONEIDA STREET  
GREEN BAY, WIS. 54304  
PHONE (414) 494-2132

WISCONSIN DISTRIBUTOR FOR

**Weather  matic.**

IRRIGATION SYSTEMS - A STANDARD OF EXCELLENCE

Call Collect for a Quote on Sprinklers, Valves, Controllers, Pipe,  
Fittings, Wire, Pumps and Accessories.

\* SALES \* SERVICE \* DESIGN \* INSTALLATION



HEADQUARTERS  
FOR

**TURF MAINTENANCE EQUIPMENT & SUPPLIES**

**"Serving N.E. Wisconsin & Upper Michigan"**

Distributing

**JACOBSEN TURF MAINTENANCE EQUIPMENT**

For Mowing, Aeration and Sweeping Large Turf Areas.

Over 50 Years of Leadership.

**HORST DISTRIBUTING, INC.**

444 North Madison Street

Chilton, Wisconsin 53014

**"Service is Not Our Motto, It's Our Business"**



The Cloister is a gracious resort hotel, with excellent dining rooms and outstanding recreation facilities. The hotel will extend group rates and complimentary green fees to GCSAA tournament players. The hotel operates on the American plan, including three full meals daily in the room price. Gentlemen are required to wear coats with ties in the dining room and club rooms.

Tournament players have two registration options. If they elect to stay at The Cloister, tournament fees are \$40 for men, \$30 for ladies, which includes a free practice round on Wednesday, golf car rental and green fees during the tournament, tee prizes, trophies and awards, tips, transportation between The Cloister and the courses and one victory banquet ticket. This fee does not include meals or lodging at The Cloister. Those who prefer not to stay at The Cloister will pay a tournament entry fee of \$80 for men and \$55 for ladies, which includes all of the above.

Housing information will be sent upon receipt of completed registration forms and entry fees.

The **DEADLINE** for receipt of tournament registrations is Dec. 31, 1978. Players who have



## Complete Tree Service

Large  
Tree  
Moving



Removal  
Spraying

Landscaping

## EGELHOFF TREE SERVICE INC.

Thiensville, WI 242-3390

not registered by Dec. 31, 1978, will not be accepted for tournament play.

All contestants must check in at the GCSAA tournament headquarters, The Cloister, Jan. 31, 1979, between 9:00 a.m. and 6:30 p.m. Contestants may check in by telephone. Information concerning starting times, pairings and transportation will be available at check-in.

**PENALTY:** Contestants who have not checked in by 6:30 p.m. Wednesday, Jan. 31, 1979, will be withdrawn automatically from the tournament. No refunds will be made.

All tournament contestants will be furnished golf cars both days; the cost is included in the entry fee. Contestants must bring their own clubs, shoes and other equipment, since rental golf equipment won't be available.

The ladie's tournament will be played Thursday, Feb. 1, 1979, at the Island Club.

The victory banquet will be Friday evening, Feb. 2, 1979 at the Cloister. Trophies and prizes will be presented during the program.

Each registration fee includes one banquet ticket, which may be picked up at check-in. Additional banquet tickets may be purchased for \$25 each, either in advance or at check-in, but no later than 6:30 p.m., Wednesday, Jan. 31, 1979. Transportation between Sea Island Golf Club and The Cloister will be provided.

## IRRIGATION for the GOLF COURSE

*"we are the pros"*

### PROFESSIONAL

- PLANNING
- DESIGN
- SPECIFICATION
- INSTALLATION
- SERVICE

### MANUFACTURE

- HORIZONTAL PUMP PLANTS
- VERTICAL PUMP PLANTS
- AUTOMATIC CONTROL

## WATER, USA

CALL 414-355-2080

10605 WEST  
MILWAUKEE 53224

GLENBROOK COURT  
WISCONSIN