



Brown Patch cont.

cause of the common warm temperature Brown Patch? To make a long story short, we didn't and it wasn't. The fungus superficially looked like **R. solani**, but there the relationship stopped. After much literature and laboratory searching the fungus turned out to be a **Ceratobasidium sp.**, a **Rhizoctonia** relative to **R. Solani** but completely different in temperature requirements and fungicide sensitivity.

The Current Situation

As more samples and reports of disease occurrences rolled in, it became apparent that we were not dealing with a curiosity but with a problem of consequence on golf turf. Symptoms have been reported on fairways, greens, tees and aprons.



Lakeshore

Equipment & Supply Co.

300 S. Abbe Road, Elyria, Ohio 44035 800-321-5951

Formulators and Distributors of...

• Herbicides • Insecticides • Fungicides • Fertilizers • Grass Seed • Irrigation Equipment • RVC Pipe • Asbestos Cement Pipe • Poly Pipe

Market Replacement Parts, Tires, Batteries Etc.

We could isolate the **Ceratobasidium** fungus from many of these turf areas; from some we could isolate neither **Ceratobasidium** nor **R. solani** but still other unidentified fungi. At present we believe that the disease is not going to become the scourge of turfgrass but merely another problem to be solved on the way to quality turf.

continued on next page



HEADQUARTERS
FOR

TURF MAINTENANCE EQUIPMENT & SUPPLIES

"Serving N.E. Wisconsin & Upper Michigan"

Distributing

JACOBSEN TURF MAINTENANCE EQUIPMENT

For Mowing, Aeration and Sweeping Large Turf Areas.

Over 50 Years of Leadership.

HORST DISTRIBUTING, INC.

444 North Madison Street

Chilton, Wisconsin 53014

"Service is Not Our Motto, It's Our Business"

Brown Patch cont.

It would appear that humid, cool weather is most favorable for disease development.

Where did the problem come from: Why *Ceratobasidium* now and not 10 years ago?

Any new problem always stimulates the question of why now? and not before? Answers have ranged from: the discontinuance of growing season use of mercury to the introduction of the benzimidazole systemic fungicides in wide use. Others have blamed shifts in the weather towards cooler, wetter summers. At this point there is no correct answer and there may never be one. The best we can do is speculate based on the facts on hand. Our best estimate is that the same shift towards cooler, wetter summers that has brought on increased Red Thread prevalence and severity has also

ROY G. ZEHREN

PH: 414/242-5740

NATURAL ATHLETIC TURF INC.

Specializing in
"PURR-WICK" TEES & GREENS
and
conventional turf & erosion control

5322 W. County Line Rd.

Mequon, WI 53902



brought Cool Weather Brown Patch to prominence. Fungi respond to their environment. Those that are favored by a change in the environment become more common; those that are less favored become less common.

cont. on next page

Nutrient deficiencies, weeds, diseases, thin turf, insects.

For the superintendent
who has everything . . . or
anything . . . or who just wants
to make a good thing better . . .
ProTurf offers research tested,
golf course proven professional
turf products.

Just give me a call.



A division of
Q. M. Scott & Sons

DICK EVENSON
608-255-6890
443 Woodview Dr.
Sun Prairie, WI





MILAEGER Well and Pump Co.

INDUSTRIES MUNICIPALITIES SUBDIVISIONS

- Deep Well Drilling and Pump Installation
- Well Development by Acidizing & Shooting
- All Makes of Pumps Repaired
- 24 Hour Service
- TONKA • Water Treatment Equipment

BYRON JACKSON PUMPS
Division of Borg Warner Corporation

Line Shaft Turbine Pumps and Submersible Pumps
to 500 HP and 1,000 ft. Settings

Servicing Wisconsin and Illinois for Over

60 Years.

20950 Enterprise Ave.
Brookfield, WI 53005
(414) 784-3960

640 Pearson Street
Des Plaines, ILL. 60016
(312) 296-8707



DERBY

HIGHLIGHT

SELECT THE GRASSES WITH A TRACK RECORD

- DERBY - turf-type perennial ryegrass
- HIGHLIGHT - world champion Chewings-type fine fescue
- EMERALD - the superior creeping bent that blends beautifully with Penncross
- SCENIC - a top-notch among the Kentucky bluegrasses

B & A SALES

Bob Gero

P.O. Box 386 Columbus, Wisconsin 53925
(414) 623-2529

EMERALD

SCENIC



The Golf Course Choice in Wisconsin and the World



Since 1926

MILWAUKEE SEWERAGE COMMISSION
8500 South 5th Ave. Oak Creek, WI 53154

Brown Patch cont.

Where do we go from there?

The major practical problem that the turfgrass manager faces is disease control to a level compatible with the uses of the area in question. At present we just do not have enough information about the disease to make clear recommendations for either cultural or fungicide control. Environmental manipulation does not seem to offer promise, especially for the golf course superintendent who is locked into a multitude of other concerns dealing with irrigation and culture. From a fungicide view the best recommendation would be to stick with success. If Cool Weather Brown Patch does appear and your current program is not holding it, then try shifting to other fungicides labeled and registered for Brown Patch until you meet with at least partial success. We are attempting to work out the fungicide situation. Dan Loughner, who is working on his M.S. in Plant Pathology with us, will be evaluating fungicides in the laboratory, greenhouse, and with luck, in the field. We will be screening both the *Rhizoctonia solani* warm temperature Brown Patch group as well as the *Ceratobasidium* cool temperature group of fungi.

Letter to the Editor:

It was brought to our attention recently that several superintendents in Wisconsin do not understand how or why the Milwaukee Sewerage Commission is involved with the Wisconsin Golf Turf Symposium. Perhaps your readers will be interested.

From the dark ages through 1963 it was our custom to host a dinner for the few Wisconsinites attending the G.C.S.A.A. Conference and Show. Facilities at San Diego

cont. on next page

Letter to the Editor cont.

were sparse and our group had to be scattered throughout the main dining room at our hotel. This, in itself, is bad, but the tab was worse since we could have been 50 in number.

Charlie Wilson decided there had to be a better way to show appreciation to those customers to whom we sell Milorganite directly. The Symposium Concept, thus born, amounted to our inviting golf course and other turfgrass customers to a one day session in Milwaukee at which we provided highly qualified speakers on one subject, plus lunch.

About that time there was some consternation at the University, as to who should run their Turf Conference. The upshot of the matter was that a meeting was called at Ozaukee Country Club to investigate means to get more golf course related information to the superintendents. Among those attending were John Stampfl (Milwaukee), Les Verhaalen (Brynwood), Charlie Shiley (North Hills), Ron Verhaalen (Ozaukee), Charlie Wilson and me. There may have been others.

Complete Tree Service

Large
Tree
Moving



Landscaping

Removal
Spraying

EGELHOFF TREE SERVICE INC.

Thiensville, WI 242-3390

IRRIGATION for the GOLF COURSE

"we are the pros"

PROFESSIONAL

- PLANNING
- DESIGN
- SPECIFICATION
- INSTALLATION
- SERVICE

MANUFACTURE

- HORIZONTAL PUMP PLANTS
- VERTICAL PUMP PLANTS
- AUTOMATIC CONTROL

WATER, USA

CALL 414-355-2080

10605 WEST
MILWAUKEE

53224

GLENBROOK COURT
WISCONSIN



Since it was beyond our means to increase the size of the audience, the Wisconsin G.C.S.A.A. group suggested that the meeting be expanded to a day and a half, a registration be charged to defray mailing, and food expenses, and since it was held in December a snow-insurance fund be established to insure

cont. on next page

Acti-dione® and Proxol® TURF Products Programmed Disease and Insect Control

DON MASKE

AGRICULTURAL CHEMICAL SALES SPECIALIST

HOME: 924 PUTNAM DRIVE, LOCKPORT, ILLINOIS 60441
815/838-8164

TUCO

DIVISION OF THE UPJOHN COMPANY



Division of
The Upjohn Company

Letter to the Editor cont.

against no-shows. Any overage is now donated to the O.J. Noer Research Foundation.

Since we were not involved in food, our participation was to assume the expenses of speakers. This has been continued ever since, with a few refinements.

Your readers may also be interested in the subjects covered:

1966: Winter Injury
1967: Physical Nature of Soil
1968: **Poa annua** (control)
1969: Satisfying the Golfer
1970: Chemical Nature of Soil
1971: Golf Course Management
1972: Recycling Golf Course Waste
1973: Thatch
1974: Drainage
1975: New Deal for Old Course
1976: Living with **Poa annua**
1977: Keeping Your Head on Straight
1978: Fast Grass

All other things being equal, these 13 years have proven to be a very synergistic exchange of information.

Sincerely,
James M. Lathan, Jr.
Chief Field Agronomist
Turf Service Bureau

Tentative Program 13th ANNUAL WISCONSING GOLF TURF SYMPOSIUM

Pfister Hotel - Milwaukee
October 25 and 26, 1978

WEDNESDAY, OCTOBER 25

8:00 A.M. - Registration and Coffee

9:00 A.M. - Watching and Listening to the World of Golf, Waxo Green, Sportswriter, **The Nashville Tennessean**, Nashville, Tennessee

MEET YOUR SPRAYER NEEDS EXACTLY!



TRAILER MOUNTED

SKID MOUNTED

ACCESSORIES



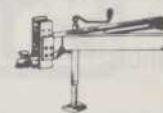
GREENS BOOM



HOSE REEL



G-GUN



SCREW TYPE JACK

ALSO CHOOSE FROM FIBERGLASS TANKS/MECHANICAL AGITATION/PUMPS AND ENGINES/BOOMS/HAND GUNS, ETC. WRITE OR CALL:

Special Products Division
HANSON EQUIPMENT CO.

301 CHARLES ST., SO. BELoit, IL 61080
815-389-2261

Turf Management Supply

DISTRIBUTORS OF QUALITY FERTILIZERS, SEEDS,
GOLF COURSE AND LANDSCAPE SUPPLIES

R2 NORWAY ROAD
SUN PRAIRIE, WISCONSIN 53590
Phone (608) 837-5598

10:00 A.M. - Taking Care of the Golfers, Ole Bill Lyons, Owner, The Lyons Den Golf Course, Canal Fulton, Ohio.

11:00 A.M. - Golf Course Playability Changes I have Seen Harold Sargent, Golf Professional and Former President, P.G.A. Atlanta Athletic Club, Duluth, Georgia. cont. on next page

LA PLANT
IRRIGATION CO., INC.

2651 SO. ONEIDA STREET
GREEN BAY, WIS. 54304
PHONE (414) 494-2132

WISCONSIN DISTRIBUTOR FOR

Weather  **matic.**

IRRIGATION SYSTEMS - A STANDARD OF EXCELLENCE

Call Collect for a Quote on Sprinklers, Valves, Controllers, Pipe,
Fittings, Wire, Pumps and Accessories.

* SALES * SERVICE * DESIGN * INSTALLATION

NOON - Lunch

2:00 P.M. - Research Toward Fast Grass in the Northeast, Dr. C.R. Skogley, University of Rhode Island, Kingston, Rhode Island.

2:45 P.M. - Short Break

3:15 P.M. - The Promise and Peril of the Stimpmeter, Carl Schwartzkopf, Director, North Central Region, U.S.-G.A. Green Section, Crystal Lake, Illinois

4:00 P.M. - Research Toward Fast Grass in the Midwest, Dr. Alfred J. Turgeon, University of Illinois, Urbana, Illinois

TREE PLANTING

Specialists



- Trees Moved up to 10" Diameter
- Commercial Planting
- Shade & Evergreen Trees
- Complete line of Nursery Stock
- Experienced with Golf Course Planting
- Fully Insured Free Estimates

TALL TREES INC.

**LARGE TREES PLANTED
FOR INSTANT SHADE**

Call **715-344-3669**

P.O. Box 397, Stevens Point, WI 54481



THURSDAY, OCTOBER 26

9:00 A.M. - What is Sacrificed for Unrealistic Goals, Theodore W. Woerhle, C.G.C.S., Oakland Hills Country Club, and former President, Golf Course Superintendents, Association of American, Troy, Michigan.

9:30 A.M. - High Quality Turf Under Stress, Bobby McGee, Atlanta Athletic Club, Duluth, Georgia.

10:00 A.M. - Break

10:30 A.M. - Fast Grass at a Unique Club, Thomas, F. Rewinski, National Golf Links of America, Southampton, New York

11:00 A.M. - Providing All Golfer's Desires for Playability, Garold M. Murphy, CGCS, Somerset Country Club, St. Paul, Minnesota.

**Sisco
Offers**

THE FINEST TURF IRRIGATION SYSTEM...custom designed to meet your Club's specific needs.

Whatever your needs, we can furnish you a complete line of quality products and all the technical help you will ever need.

WE'RE THE EXPERTS IN ALL KINDS OF GOLF COURSE SYSTEMS!

Sprinkler Irrigation Supply Co. A division of A.J. Miller Inc.

1738 Armitage Court, Addison, Ill. 60101

Call your SISCO man today!

(312) 629-7730

Buckner®



Johns-Manville

SPEAKERS PLEASE NOTE: We will enjoy your company at a get-together and dinner about 6:00 p.m., Tuesday night at the hotel, to meet all the participants and arrange for any special requirements you may have.

Reinders

TURF EQUIPMENT — IRRIGATION SUPPLIES

13400 W. WATERTOWN PLANK RD., • ELM GROVE, WIS. 53122

PHONES: SALES (414) 786-3163 — OFFICE (414) 786-3300



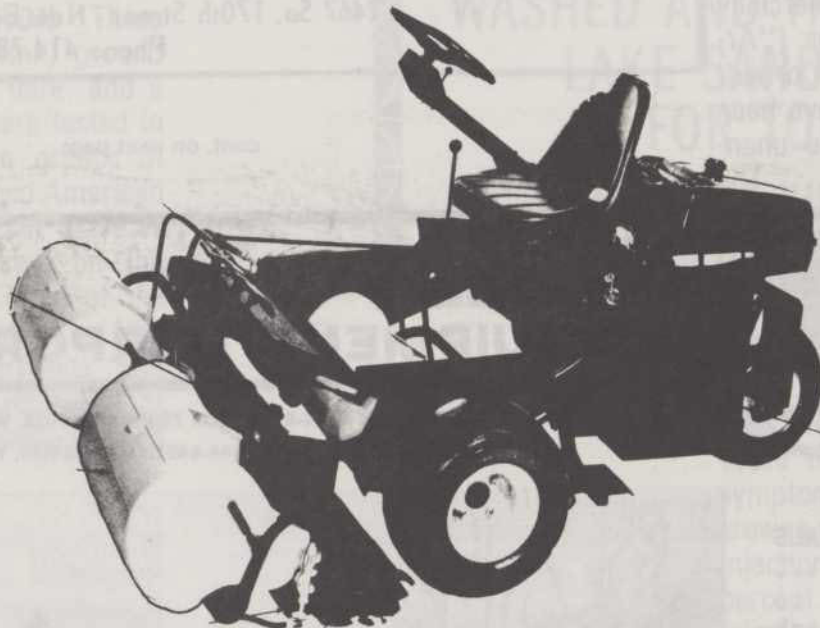
**Diamond
Shamrock**



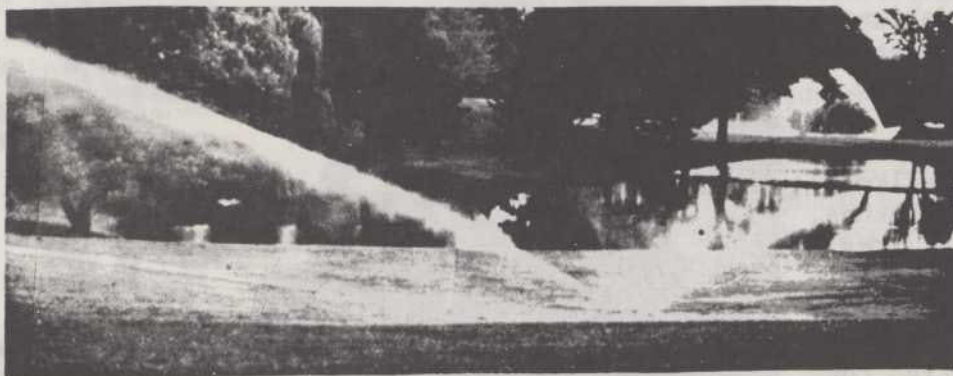
Myers



Green Machine



GORDON'S
PROFESSIONAL TURF PRODUCTS



PAR·GX
PROFESSIONAL PRODUCTS

CUSHMAN RYAN®

The following article was taken from
MINNESOTA HOLE NOTES

RESEARCH NOTE: Systemic Fungicides for Control of Dutch Elm Disease

by Mark Stennes and D.W. French

The primary control measure for Dutch elm disease is sanitation which includes early detection, elimination of dead and dying elms and disrupting of common root systems (Agricultural Extension Service Bulletin No. 211.) Systemic fungicides, if properly applied, can provide additional protection against Dutch elm disease for elms of high value.

Although the fungitoxic properties of the two commercially available systemic fungicides ("Arbotect" 20-S = TBX and "Correx" Lignasan BLP = MBC-P) have been known for some time, some unanswered questions remain. The



MODERN PREVENTION FOR DUTCH ELM DISEASE BELONGS IN YOUR TREE PROGRAM

D-H-D STEDI FLOW II & V offers an injection System that works with the trees own system moving when it does.

A system that means reduced wounding and at the same time minimizes chances of toxicity to your key trees.

All this allows you to tell your members that you offer the finest injection techniques available today.

D H-D

INJECTION SYSTEMS INC.

2467 So. 170th Street - New Berlin, Wisconsin 53151
Phone 414-784-3556

cont. on next page

WISCONSIN

Turf

EQUIPMENT CORPORATION

1917 W. COURT STREET • 752-8766 • BOX 708 • JANESVILLE, WISCONSIN 53545
21520 W. GREENFIELD AVE. • 414-544-6421 • NEW BERLIN, WISCONSIN 53151

FROM HAULING CHEMICALS
TO CARRYING PEOPLE....
from climbing hills to
plowing snow...the Jacob-
sen UV-4 is designed
to handle a variety of
utility vehicle needs.

Already used by railroads,
airports, farms, ranches,
riding stables, real
estate developments, mu-
nicipalities, parks, golf
courses, cemeteries, and
many other satisfied cus-
tomers.

