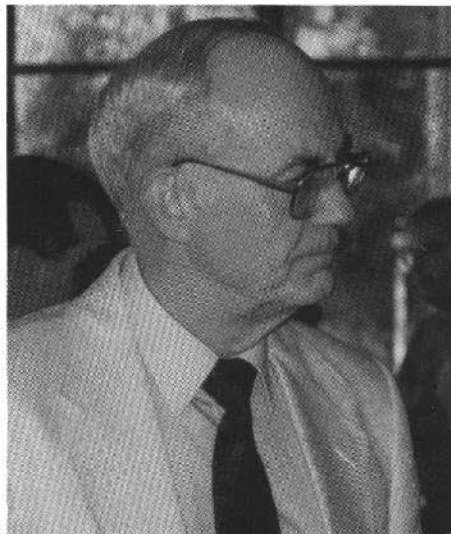


# He Really Did It — Gayle Worf RETIRES!

By Monroe S. Miller



The honored guest at Professor Worf's retirement reception!

Everyone else at Gayle Worf's retirement reception on Wednesday, June 17 may have been celebrating the end of his long and productive career as a plant pathologist and professor and administrator, but I wasn't.

Certainly I was there to honor him. But not to celebrate.

It is pretty difficult to celebrate a day one has been dreading for too long. The very minute Dr. Worf retired, my life and the lives of many other Wisconsin golf course superintendents got more difficult.

Gayle Worf was the epitome of the extension specialist and I cannot begin to count the number of times he got me out of trouble with disease identification, recommendations for treatment and plain good advice. He will sorely be missed.

But honor him we did on that June afternoon in the Alumni Lounge of the Wisconsin Center. Both the Wisconsin Golf Course Superintendents Association and the Wisconsin Turfgrass Association presented Gayle and Mary with travel gifts and good will. The hope on everyone's part was that such a gift will give them good memories that will last forever.

Gayle waited only a couple of days before he sent this letter to be shared with all of you.

Dear WGCSA members,

There really are no words that I know to adequately and properly say "thank you!"

I can say, though, that I have treasured those many occasions I have had to work with members of the turfgrass industry over the years. I've had so many good experiences that I dare not start ticking them off! As I was able to say Wednesday afternoon, though, I've had the opportunity to work with most crops in the state, turf has been my favorite. It's not just because it's a fascinating "crop" with so many challenges and so much value to society, real though these are. It's because I've never met more genuine people who are absolutely open, excited, and supportive of their industry. It's also because you have made so much progress professionally over the past two decades, and you have your goals set on even greater achievements. Your problems have been many, yet your vision has always been beyond them and upon a bright and optimistic future. To remain a part of it through naming the "Worf Conference Room" at the O.J. NOER CENTER is a special highlight. How wonderful!

Mary and I have not decided where we will travel with your gift yet. Rest assured that when we do make the journey, that we will take all our turf friends with us in our hearts!

Please convey our kindest wishes and gratitude to your membership.

Sincerely,  
Gayle L. Worf  
Plant Pathologist and  
Acting Associate Dean



**the  
bruce  
company** OF WISCONSIN, INC.

(608) 836-7041

**LEE BRUCE**  
GOLF COURSE CONSTRUCTION

2830 W. Beltline Hwy. • P.O. Box 330 • Middleton, Wisconsin 53562