

Irrigation Please!

By Tom Salaiz

Thanks to the hard working efforts of the crew from Midwest Irrigation, installation of the irrigation system for the Noer Facility was completed on June 4. Eight long working days were spent pulling 3,000' of 2.5" PVC main and 7,200' of poly pipe, and installing 72 electric valves and 288 sprinkler heads.

The same evening the irrigation installation was completed, weather forecasters were predicting showers the following day. Talk about a sophisticated irrigation system! I knew irrigation technology was improving by leaps and bounds, but this is ridiculous. Well, it turns out we received only a trace of precipitation, so we apparently have a few bugs to work out.

Actually, the TORO NETWORK 8000 irrigation system is operating perfectly. Designed by Mr. Tom Emmerich, this state-of-the-art system will simplify the management of research projects requiring different irrigation regimes.

The irrigation system (Figure 1) is designed to independently irrigate 72

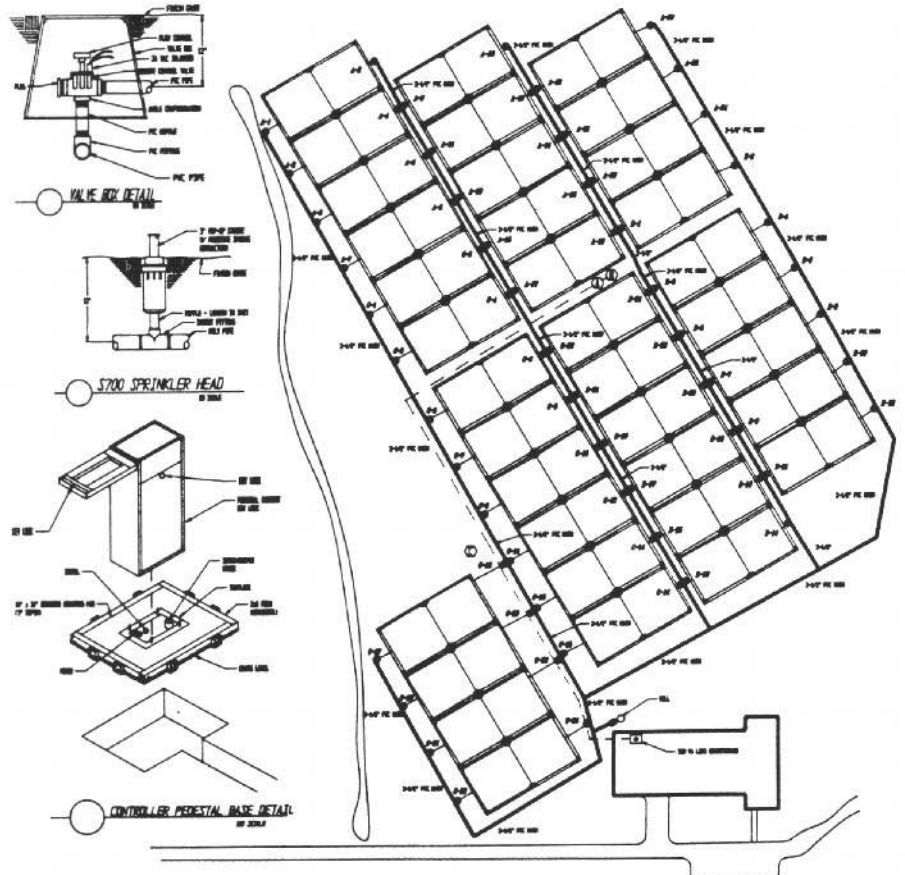


The irrigation system required thousands of feet of poly pipe.

FIGURE 1.

O.J. Noer Turfgrass Research and Education Facility

IRRIGATION PLAN



plots, 50 ft. x 50 ft. in size. This figures to just over four acres of irrigated research plots. Each plot is irrigated with four TORO Super 700 sprinklers. Three Network 8000 satellites are used for controlling irrigation with each satellite responsible for 24 plots.

The programming capabilities of the satellites allow for a large amount of irrigation scheduling flexibility. Each satellite has eight programs and start times with up to four programs able to run simultaneously. Other useful features include five irrigation cycles, sy-

ringing capabilities, and global percentage adjustments of watering times for all programmed stations.

A special *Thank You* is extended to the TORO Company and everyone who contributed to the purchase of the irrigation equipment. Reinders Irrigation Division was especially generous.

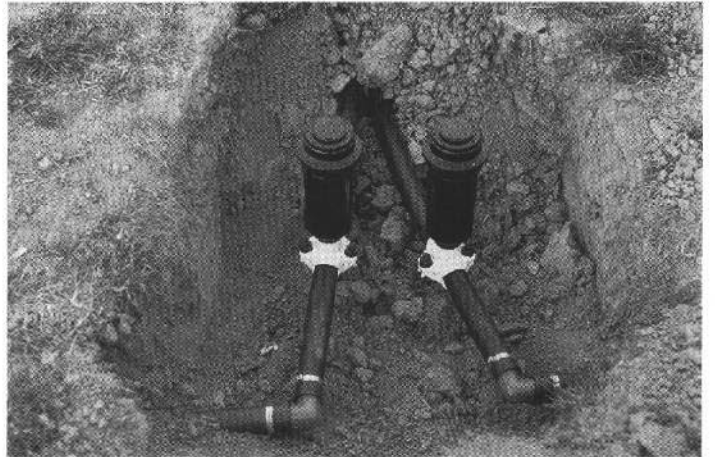
Also completed in early June were additional tree and woody ornamental plantings. Two Honeylocust were donated by Long Island Farm, seven Green Ash were donated by the Bruce Company, and McKay Nursery donated 29 Quaking Aspen, 71 Gray Dogwood, 63 Hazelnut, 23 Spiraea, and 17 Common Witchhazel. All the Green Ash and a majority of the Gray Dogwood were close to the fifth green of the University golf course, and the remainder of the plant material was on the grounds of the Noer Facility.



The Bruce Co. planted the donated materials for the Noer landscape planting plan.



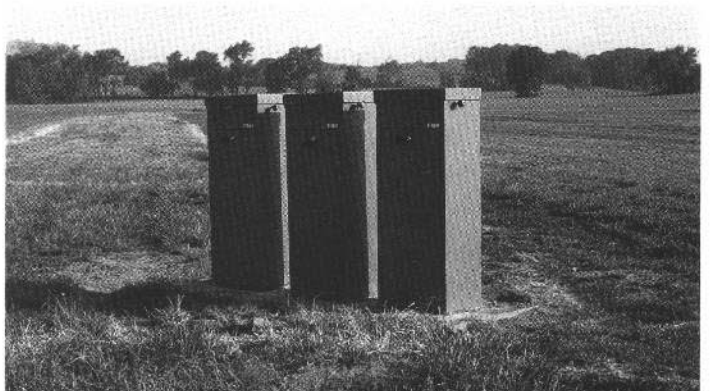
Midwest Irrigation pulled the main lines and control wires into the ground at the same time.



Kwikseal saddles and adjustable cutoff risers were used to hold the sprinkler head.



Two pieces of 1" poly pipe were pulled in tandem for adjoining plots.



Three Network 8000 satellites provide system control and are located side-by-side for convenience.



In this picture the plow is pulling poly pipe along the perimeter of a plot.



No more hose and rollerbase sprinklers!