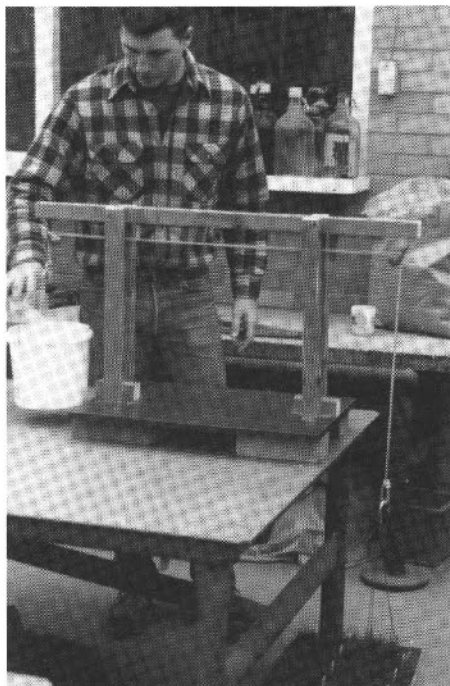


but, the iron applications did not seem to have a major effect on the rooting. The one pound application of nitrogen seemed to induce more shoot growth; hence, there was no substantial difference between iron applications in these treatments. The sod pieces treated with a second application of iron were noticeably darker but had a lower



Is that a Jacobsen mower?



Jeff devised a unique method for measuring root strength.

rooting response than comparable treatments.

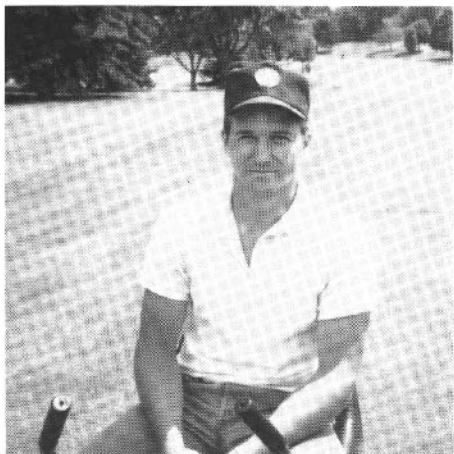
Iron application is useful in inducing strong roots for sod that is nitrogen deficient. Too much nitrogen, regardless of how much iron is applied, can be detrimental to strong root growth.

USGA Director speaks...

Continued from page 19.

Overall team best ball winners were Jeff Bottenzek and Dick Evenson. Second place went to Bryan Schmidt and Wayne Otto. Third place winners were Jerry Ebel and Bruce Worzella. Losing the tie breaker and finishing fourth were Pat Mertz and Chad Ball. Fifth place went to Jim Wunrow and Dave Murgatroyd.

This meeting was the second of three featuring USGA Green Section staff. Needless to say, it is always an honor to have the Green Section National Director take time from his busy schedule to be a part of someone else's. For the Wisconsin GCSA, it truly was a memorable meeting.



NOR-AM Scholarship winner Jeff Bahr.

BAHR TO RECEIVE NOR-AM SCHOLARSHIP

Jeff Bahr, a senior in Dr. Wayne Kussow's Turf and Grounds Management Program at the University of Wisconsin-Madison, has been chosen as the 1988-1989 recipient of the NOR-AM TURF SCHOLARSHIP. The announcement was made by John Turner, NOR-AM's representative for Wisconsin. The award will be formally presented to Jeff at the 1989 WTA Winter Turfgrass Conference and Annual Meeting next January.

John Turner has been absolutely dedicated to turfgrass education and deserves an applause for working to include Wisconsin in the generous NOR-AM program. Many fine young people have benefited from this financial aid.

Jeff Bahr is the son of WGCSA member and La Crosse Country Club Golf Course Superintendent Joe Bahr. Jeff was selected by a UW-Madison faculty committee.

Gelhar Sand

Serving Golf Courses Since 1919

Silica Sand-Washed, Screened and Blended to U.S.G.A. specifications.

Top dressing and Bunker Sand.

Chemical analysis of Washed Silica

Silica	97.941%
Iron Oxide	.018%
Aluminum Oxide	.012%
Calcium	.004%
Magnesium	.003%
Sodium	.001%
Potassium	.001%
Titanium	.001%

Silica Sand Top Dressing Screen Analysis

Mesh	% Retained
30	2.0
40	11.0
50	25.0
70	51.8
100	10.0
140	.2



P. O. Box 78 • Larsen, WI 54947

414-667-4792



COUNTRY CLUB greenskeeper

- Homogenous Granulation
- High Methylene Ureas (W.I.N.)
- Balanced Feeding
- Fits Your Budget

Gregory Senst
608-238-9715