

# DEEP AERATING WAYZATA AND SOUTH VIEW COUNTRY CLUBS

By Ralph Christopherson

It all started when Jim Linblad, Supt. of Wayzata Country Club, located on the outskirts of Minneapolis, called Curt Larson at Wisconsin Turf Equipment Corp., asking if we would be interested in aerating his greens with our deep Verti Drain aerator. We have been involved in doing custom aerating with the deep Verti Drain aerator for quite a few athletic fields in Wisconsin and northern Ill., but Curt was quite skeptical in traveling to Minnesota with our semi, carrying the aerator and a Jacobsen G-10 tractor, just to do one golf course. To come up with a price for travel, lodging, meals, and travel permit, which was fair for both parties, required a lot of consideration.

A few days later Roger Kisch of Southview Country Club called and talked to Dennis Christopherson about deep aerating three of his problem greens. When I came into the picture, Curt told me about the project and asked if I would be interested in traveling to Minneapolis with our man Friday, Pahl Olson. Besides driving semi Pahl is an excellent equipment operator and he even cooks hamburgers at Wisconsin Turf field days. The project sounded very interesting, so I agreed. The next day I called Orrin Eidsmoe, President of the R.L. Gould Co. of St. Paul, and asked if he would have time for a golf game while Pahl was doing the slow painful task of aerating Wayzata. Orrin was happy to accommodate me so the trip to Mn. was scheduled.

At 6:00 A.M. Tuesday, September 2nd Pahl picked me up at my home and after throwing my clubs and suitcase on the semi, we were off to Minneapolis. I had never traveled too far with Pahl before, but it didn't take me long to learn the passenger did not have the best seat. While Pahl was floating along on his air ride seat, I was bumping along, which was like riding a bucking bronco. At noon we arrived at Hudson, Wi., the last town before entering Mn., where we had lunch. At 1:30 P.M. we pulled into Southview Country Club and within a few minutes we met Roger Kisch, Supt. of Southview. He was confronted with three



Southview example of results.



Sod removal Wayzata

very hard compacted greens and after walking across his first problem green, I was very skeptical we could do the job without tearing out his shallow rooted bent and poa. The greens were extremely hard and using the Terra Care compaction probe for measuring hardness, I found his greens to measure 85 lbs, which is a very critical range for aerating.

The Verti Drain aerator can be equipped with various tines and for athletic fields we use a 1" diameter by 16" length tine. For the job we were about to attempt, we had the machine equipped with 3/4" by 12" tine and adjusted the Verti Drain to aerate at a 10" depth. Before going on the green, Pahl took a pass in the fairway to scour the tines.

The first green Roger had us start on was a long practice green and much to my amazement we did not tear up a single blade of grass, in fact the Verti Drain plunked into that hard surface like it was butter. Our next green I believe was #9, which was just as hard

as the practice green. Our first pass thru the middle of that green produced the same excellent results as the practice green.

After a few passes with the Verti Drain, I took the Terra Care scale and inserted the probe in the middle of the 4 x 5 pattern and could not believe the results. We reduced the compaction by 25 lbs. After probing different portions of the green the results were the same, from 85 lbs compaction to 60 lbs. If you are not acquainted with this tool, 45 to 60 lbs is a very desirable range. As soon as we completed aerating a green, Roger's capable crew followed up immediately with the Turfco top dresser, applying a material consisting of 80% sand and 20% peat. A drag mat, pulled behind a golf cart, followed on only a very limited basis and the final finish job was done with a 5 gang bristle brush. I don't know if this was a manufactured unit or built by Roger. For finishing the job, Roger contends the brush is not as severe on the grass, but I will say it certainly produced an excellent finished job.

From Southview we traveled across town to Wayzata Country Club where we were greeted by Jim Linblad, who was just finishing his busy day. His problem was completely different than Roger's at Southview. For the past few years he was experiencing a lot of trouble with his Toronto C15 greens. The club agreed with Jim's decision to replace the Toronto C15 with Penn-cross sod. Before laying his penn-cross, which was grown on fumigated soil, supplied from H & E Sod Co. of Chicago, Jim's program was as follows. Remove the Toronto C15 and have us aerate at a 10" depth with our Verti Drain aerator, have the Dail Hendrix Co. of Louisville, Kentucky come in and fumigate, followed up with fertilizing and then applying a heavy top dressing. After drag matting and leveling, the tedious task of laying 17 thousand yards of penn-cross was to follow. This sounded like a big, big fall project but after meeting the energetic Jim Lindblad, I was very convinced he would have Wayzata in excellent condition by the spring of 87.

By the time Pahl got our equipment unloaded and safely stored in Wayzata's barn, it was 6:00 P.M. Jim had motel reservations for us 15 miles from the club and he personally took the time to escort us to our motel, frankly I wonder if we would have found it on our own.

Wayzata's crew started their day at

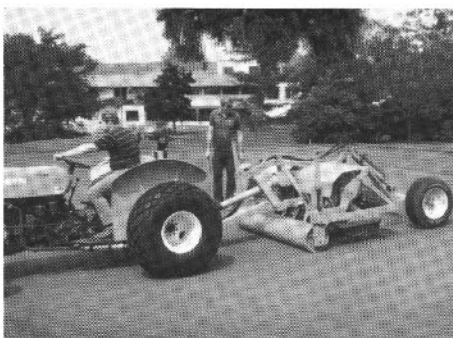
7:00 A.M. and Pahl and I were Johnny on the Spot when Jim and his crew arrived. Jim got us started on his sod stripped, large #18 green, and the results on the 1st pass was beautiful, and Jim was more than pleased in what he saw.

I probed the green with the Terra Care compaction scale before aerating and it measured a mere 45 lbs, so I suppose you are wondering why Jim wanted to go to the expense of a 10" deep aeration?? Jim's next operation was fumigating and he wanted the soil sterilized much deeper than just the surface.

Jim assigned me one of his qualified men to work with Pahl and mark all sprinklers, water and electric lines, so we would not damage any of the underground installations.

The next hour Jim gave me a tour of Wayzata's beautiful golf course, his maintenance building, office and their sod removal operation, which was very interesting. After cutting the sod, it was pushed into piles with two trap rakes equipped with a dozer blade. A tractor with a front end loader would scoop the sod into a dump truck and haul it off. While touring the course I had a chance to talk shop with Jim and I was very surprised to learn some of the courses in the Minneapolis area have been using light weight fairway mowers for as many as 7 years.

Jim knew of my intention of playing golf with Orrin that day, so he had his lovely wife, Mavis, chauffeur me to the



Rodger inspecting Pauls 1st pass at Southview



Bull-dozing sod in piles



Aerating Wayzata

Gould Co., which was close to an hour drive. Mavis was an excellent driver and whizzed their Ford van through the Minneapolis, St. Paul traffic like a veteran cabbie. After spending an enjoyable day with Orrin playing his Dellwood Country Club and discussing the trends in the turf business he brought me back to Wayzata about 5:00 P.M.

Pahl worked until 7:30 that night and completed 16 greens. On athletic fields, with less turning and maneuvering, we can do one half acre per hour, but golf course greens are considerably slower. It rained very hard that night so the next morning we did not get our 7:00 A.M. start, but we did get the last two greens completed by 10:30.

As we were loading, preparing to return to Janesville, Jim received a call from Chris Hague, Supt. of Hazeltine Country Club. He had a few problem greens and was interested in deep aerating. Because of our limited travel permit and some other previous commitments, I reluctantly had to decline going to Hazeltine. I did reassure Chris we would be happy to return next year if we scheduled enough work.

Is deep aeration here to stay??? With the results I have seen in Europe along with the custom work we have done in Wisconsin and Illinois, I firmly believe this tool is a real problem solver. If you have severe compaction sub soil, hard pan, or poor drainage, the Verti Drain deep aerator is a tool that can help you.

Our best to the  
"GREENEST  
THUMBS"  
in the State...  
enjoy a  
bountiful 1986!



WISCONSIN SECTION  
PGA OF AMERICA

## To Keep Your Course In Classic Condition, Use These High-Quality Products from NOR-AM

### ● NITROFORM® SLOW-RELEASE NITROGEN

Releases by slow bacterial action to provide consistent 38% nitrogen.

### ● TURCAM® INSECTICIDE

Controls a wide range of turf and ornamental pests.

### ● PROGRASS® HERBICIDE

Controls certain annual grasses and broadleaf weeds in ornamental turf.

### ● DELTIC® INSECTICIDE

Gives fast knockdown and long-term control of fleas, ticks and other pests.



### ● ACTI-DIONE® TURF AND ORNAMENTAL FUNGICIDES

Controls a broad range of diseases on turf grasses and ornamentals

### ● BANOL™ TURF AND ORNAMENTAL FUNGICIDE

Controls pythium and phytophthora

### ● PROXOL® 80SP INSECTICIDE

Controls white grubs, sod webworms, cutworms and armyworms in fine turf.

**NOR-AM**

JOHN TURNER  
(312) 985-6643