

PGA Annual Now Available

The 1984 Wisconsin PGA Annual is off the press and available to the Wisconsin golf industry. It is an excellent publication and Bob Brandenburg, Executive Director, has done his usual outstanding job in assembling this year's publication.

The cover of the Annual features the par 3 twelfth hole at WGCSA member Steve Schmidt's Butte des Morts Golf Club in Appleton. Check with your PGA Pro for a copy.

Hasselkus Releases Ornamentals

Dr. Edward Hasselkus, Professor of Horticulture and Landscape Architecture at the University of Wisconsin — Madison, recently released two new ornamental plants:

- *Betula platyphylla japonica* 'Whitespire' was formally released in 1983. Its merits include resistance to bronze birch borer, white bark, a narrow pyramidal form and tolerance of high temperatures.
- *Juniperus horizontalis* 'Wisconsin' was also formally released in 1983. Its merits include a low (8") height, dense center, and a superior foliage coloration in both summer and winter. A comparative study of the low-growing junipers was culminated in the publication: Schneider and Hasselkus — The best and worst ground cover junipers in the Midwest. Amer. Nurs. 158(2); 38-59.

These new plants are currently available commercially. Check with your nursery on their availability.

Dr. Hasselkus was the speaker at the WGCSA meeting held at Maple Crest Country Club last year.

Johnson promoted

LESCO, Inc., Rocky River, Ohio, has named Jim Johnson to a management position. Jim will manage LESCO Truck Sales in Wisconsin, Illinois, Indiana and Michigan. A LESCO Truck Salesman since March 1981, Jim has served customers in western Michigan, Chicago and southern Wisconsin.

Before joining LESCO, Johnson was assistant superintendent at the Country Club of Lansing (MI). He received his B.S. in Crop and Soil Science with a specialty in turfgrass from the Michigan State University. Jim, his wife Barbara and their daughter live in Mundelein, IL. He is a member of the Wisconsin Golf Course Superintendents Association.

Looking for a bargain?

Most people have their eyes open for a bargain and, for a professional urban plantsman, there isn't a better buy available than a copy of the URBAN PHYTONARIAN HANDBOOK. More than a dozen University of Wisconsin — Extension specialists from various disciplines have assembled the material in the handbook. As the name indicates, the book is intended to help in the evaluation, diagnosis and treatment of unhealthy plants found in the urban setting. It deals with problems of shade trees, turf, flowers and shrubs — all of which are part of any golf course environment. For those of us who are also gardeners at home, there is a section on home gardening, as well. The book also deals with weed problems and covers general pesticide information. The fact sheets contained within the handbook almost all feature colored photographs to assist in the diagnosis of plant problems.

Update packets are mailed to handbook owners as new or revised sections become available. The handbook can be purchased for \$28.00 plus tax from your Wisconsin County Extension office, or from:

Agricultural Bulletin Building
1535 Observatory Drive
Madison, Wisconsin 53706

The URBAN PHYTONARIAN HANDBOOK is prepared in limited numbers. If it is not available from your county agent's office, call 608-262-3346 to confirm its availability from the Agricultural Bulletin Office.

Distributor's role expanding

Red Roskopf, Sales Manager of Wisconsin Turf Equipment, sees a real change in the role of distributors of turf equipment and materials. He feels there is a need for distributor personnel to work more closely with Golf Course Superintendents in keeping abreast of the rapidly changing products available for use on golf courses. This includes more sophisticated machines, new applications for equipment already in the marketplace, and the introduction of pesticide materials with very specific targets. Red, speaking from his point of view, is very excited about this new sophistication in management and finds the need for closer ties with Superintendents interesting and challenging. He notes, for example, the new generations of fungicides have specific modes of actions that require more accurate application and timing of application,

that logic is essential to the use sequence of fungicides, and that a more thorough understanding of the materials available is necessary. Further, he says that frequency of cut and height of cut of some of the new mowing equipment need to be considered together. The role of the distributor will be one of providing Superintendents with the necessary technical information from manufacturers.

Roskopf noted that the business climate for Wisconsin Turf is improved over recent years, and they are experiencing some equipment shortages. They are having trouble, believe it or not, in getting delivery of walking greens mowers! He reports that the Terra large area aerifier is selling very well for them. He has been in close contact with Superintendents in the Milwaukee area that are working on *Poa annua* suppression/overseeding programs, and feels that there is good potential for long term success.

Help!

We are always in the need of contributing authors for the GRASSROOTS. Each and every member of the WGCSA has an interesting story to tell, an experience to share, a new idea that has worked well, or an opinion to express. The bottom line purpose of our newsletter is communication among our membership; why not participate by recording your thoughts and sending them to Monroe Miller, C/O Blackhawk Country Club?

We have very few "rules"; length of articles can vary between five paragraphs and five pages. Don't let the old "I cannot write very well" stand in your way. We aren't expecting anyone to win a Pulitzer Prize in journalism; we want only to share thoughts with one another. The subject matter is as broad as our job is. We do like photographs — black and white prints are preferred. We also like a brief biography of each author. Deadlines are critical — the printing dates for the remaining days of 1984 are July 1, September 1, and November 1. No exceptions! Material must be in my hands by those dates.

As you, hopefully, have noticed, each 1984 issue has a theme or a focus. We choose a topic we think is pertinent and emphasize that subject material with several articles. The first issue dealt with turfgrass research; the second newsletter spoke to the value of the USGA Green Section to Wisconsin Golf Course Superintendents. This issue has several articles dealing with the relationship between our advertisers and WGCSA members. Remaining issues have the following themes:

July/August —

The weather and the environment will be the common thread woven through this newsletter.

September/October —

The O.J. Noer Foundation is 25 years old in 1984. This issue will look at the history of the Foundation, the Symposium and O.J. Noer. These are important topics in the history and future of the WGCSA. Charlie Wilson, Jim Latham and Bob Welch have agreed to carry the bulk of the burden in preparing this issue.

November/December —

The heritage of the WGCSA will be treated in the year's final newsletter.

These coming issues are **not limited** to the above topics, however. Any material you feel important will be included in the GRASSROOTS. Just like anything else, the newsletter will only be as strong as the participation and the support from the membership. Lend a helping hand, please.

Plan ahead!

That's the advice from Ed Devinger, Turf Division Manager of Reinders Brothers. Ed reports that about 25% of his company's October stocking orders are still short, and that lead time will be more and more important when ordering new equipment. He also pointed out that grass seeds are in a critical shortage situation, and many just aren't available. The poor weather last year in the seed growing areas of the Northwest have left the industry without some bents, and many hybrid Kentucky

Bluegrass varieties are sold out. Ed says that situation will be with us until the fall crop comes in.

Reinders Brothers staff have a confident outlook on business in 1984 and are noticing some "loosening" of the municipal markets. They also are finding the lawn care industry professionals are very busy. One factor in this optimistic attitude expressed by Devinger is the fact that product prices are stable, welcome relief after too many years of escalating prices.

Reinders has appointed Paul Feldhake as their Milwaukee area Sales Representative. Feldhake, a native of Verona and a former UW—Madison student, has golf course experience in Minnesota and at Nakoma Golf Club in Madison.

There's still time

There is still time to notify the Wisconsin Department of Agriculture of your interest in participating as a cooperator in the 1984 Gypsy Moth Trapping Program. In the southern parts of the state, traps should be in place prior to July 14, so we are not under the press of time to sign up as a cooperator. Julie Nara, Entomology Specialist for the Department, reports that golf courses are particularly good trapping sites because of executive moves into urban locations where golf courses frequently found. The insect is usually carried into an area by vehicles and posses-

sions of individuals coming from places infected with the Gypsy Moth. Details on cooperating were included in the last issue of the GRASSROOTS. For more details or additional information, contact Julie Nara at (608) 267-7727 or call (608) 266-2295 and leave a message.

A message from the CMAA-Badger Chapter

It is difficult to imagine when looking out at the golf course from my office that 3 days ago on Easter Day we had 4 inches of snow. The first thing that came to my mind was the Manager-President-Superintendent-PGA Pro Golf Tournament to be held at Milwaukee Country Club on May 14, 1984 and I am keeping my fingers crossed that it will neither snow nor rain.

All preparations are underway and I know it will be an outstanding day for all participants. We have some outstanding prizes and surprises which will make this day one to remember.

I look forward to seeing many of you there, until then, good weather to all of you.

Bernie Sturm
President, Wisconsin Badger
Chapter, CMAA
Blackhawk Country Club

INSIST ON EXCELLENCE

L.W. ALLEN OFFERS A COMPREHENSIVE VARIETY OF QUALITY PUMPING AND CONTROL SYSTEMS TO ACCOMMODATE THE NEEDS OF ANY GOLF COURSE IRRIGATION SYSTEM.

FIFTY YEARS EXPERIENCE IN SALES, SERVICE AND ENGINEERING CONSULTING ENABLES US TO HELP YOU IN THE PLANNING OF A NEW PUMP PLANT FOR YOUR IRRIGATION SYSTEM OR IN THE UPDATING OF AN EXISTING STATION.

WE ALSO OFFER COMPLETE MACHINE SHOP FACILITIES FOR PUMP REBUILDING AND REPAIR, AND WE MAKE FIELD SERVICE CALLS ANYWHERE IN WISCONSIN.

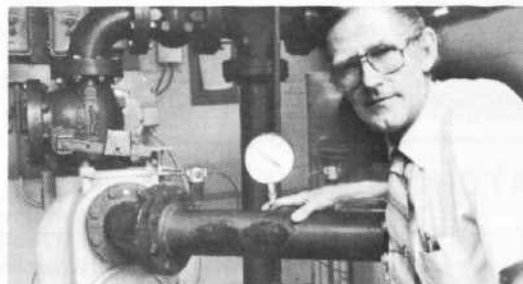


50 Years

L.W. ALLEN, INC.

2714 Industrial Drive
Madison, WI 53713

800-362-7266
608-222-8622



- Electric motors for all applications
- Centrifugal and turbine pumps
- Variable speed and variable frequency systems
- Wide variety of controller systems
- Optional accessories for pump stations, including:

- | | |
|---------------------------------------|-----------------------------------|
| —Reduced voltage starting | —Self-priming equipment |
| —Phase protection | —Backflow preventors |
| —Lightning arrestors | —Manual and automatic selectors |
| —Surge protection | —Intake and discharge components |
| —Run time meters | —Dialers tied to telephone system |
| —Hi/low pressure protection | —Booster stations |
| —Indicating lights for all situations | —Pressure control valves |