

Dissolved Salts in Root Zones Containing Inorganic Amendments

Inorganic amendments are generally sand-sized, mineral particles that are employed to increase water and nutrient retention in sand-based root zones. There are three major classes of inorganic amendments including calcined clay products such as Profile (Profile Products); clinoptilolite zeolite products such as Ecolite (Western Organics); and diatomaceous earth products such as Axis (Eagle-Picher Minerals).

A distinguishing feature of inorganic amendments is their internal porosity, composed of small diameter pores internal to the amendment particles themselves. Thus, 20 percent of an inorganic amendment by volume in mixes with USGA-guideline sand contained 8 to 12 percent of the total volume of pores with diameters < 0.08 mm, considered to be internal pores (Bigelow et al., 2004). These internal pores, due to their small size and because they are not connected to one another, contribute to water retention of the root zone. Inorganic amendments can also contribute to CEC of a root zone with the greatest contribution from clinoptilolite zeolite and the least from diatomaceous earth. Further, as shown by McCoy and Stehouwer (1998) the exchange sites of these inorganic amendments prefer monovalent versus divalent cations.

There is, however, a concern that root zones containing inorganic amendments at rates approaching 20 percent by volume, in conjunction with the use of saline irrigation waters, may lead to incomplete leaching and salt retention within the root zone. Consequently, we conducted a column leaching experiment to test this concern where the columns were built to represent a USGA-style putting green profile and the root zones contained 20 percent by volume amendment with Axis, Ecolite, Profile or sphagnum peat.

The column leaching experiment

Unamended sand and 8:2 sand:amendment volume ratio mixes using Axis, Ecolite, Pro-

file or sphagnum peat were each packed into 2-inch diameter by 18-inch-long PVC columns that contained 3 inches of gravel in the bottom. The test columns were prepared to allow removal of the top 3 inches by cutting off a 3-inch section and reattaching with duct tape. After assembling the columns, the root zones were extensively washed with a dilute, 0.01 M CaSO_4 background solution to remove resident ions.

After allowing the columns to drain overnight, a 3 dS m^{-1} saline solution (a very high salinity content for water to irrigate turf) that contained 225 mg L^{-1} NaCl, 1070 mg L^{-1} Na_2SO_4 , 248 mg L^{-1} MgSO_4 and 380 mg L^{-1} CaCl_2 was applied to the columns at a sufficient quantity to replace all of the background solution with the saline solution. The columns were then allowed to drain overnight.

Prior to the leaching phase of the study, the upper 3-inch segment was removed and weighed to determine the water content. Its root zone contents were emptied onto aluminum foil to air-dry for an hour. Based on preliminary work, this was the drying time required for mixes amended with inorganic amendments to reach a water content of about 14 percent volume, ensuring that most of the salts in the surface layer of the column were contained within the internal porosity. The soil sample was subsequently weighed, repacked into the 3-inch sub-column and replaced.

The background solution of CaSO_4 was then applied to the column at the rate of 0.75 in h^{-1} and a fraction collector set to collect approximately 15 ml of solution leaching from the bottom of the column was turned on. The fraction collector sampling interval was 22.6 min per sample for all experimental runs. This was the salt leaching phase of the experiment, and delivery of saline solution to the column continued for approximately 32 hours (Photo 1). Subsequently, the syringe pump was turned off and the surface of the column

By Ed McCoy, Ph.D., and Keith Diedrick, Ph.D.

Continued on page 42



The experimental set-up of the column leaching experiment showing the 2-inch diameter columns, the syringe pump (center top) and fraction collector (center bottom).

Continued from page 41
was covered to prevent drying. Collection of leachate samples continued until the column had finished draining, typically overnight.

The solution samples leached from the bottom of the columns were analyzed for Ca, Mg, K and Na using ICP and for Cl and SO₄ by ion chromatography. The EC_w (electrical conductivity) values were also determined. These results were plotted as a function of cumulative leachate volume to form breakthrough curves for both the saline solution loading and leaching phases. In this way, we could graphically compare the leaching behavior of the various root zones to determine if inorganic amendments retained the saline solution to a greater degree than either the unamended sand or the 20 percent by volume peat amended root zone. Finally, the entire experiment was repeated with similar results and interpretations.

Column leaching results

Electrical conductivity breakthrough curves —
The electrical conductivity (EC_w) break-

through curves during saline solution leaching are shown in Fig. 1. The general behavior of the leaching phase is the mixing with and displacement of the saline solution by the more dilute background solution. Thus the early volumes of leachate displaced from the columns had EC_w values of approximately 3.0 dS m⁻¹ (3000 μS cm⁻¹) equal to that of the saline solution. Subsequently, the leachate solution EC_w values declined to the smaller values of the background solution. Comparison of the breakthrough curves showed rather small differences between the amendment treatments for leaching of the saline solution. The unamended sand exhibited saline solution displacement with the smallest cumulative leaching, followed by similar rates of displacement between Ecolite and Profile. Axis and the peat amendment required the greatest cumulative leaching. This ordering is similar to the measured water contents of the root zones prior to the solution leaching phase where the peat amended root zone was the wettest and the unamended sand was the driest. Thus, it appears that the leaching dif-

ferences are explained by the larger volume of resident saline solution in the root zone requiring greater cumulative leaching by the background solution.

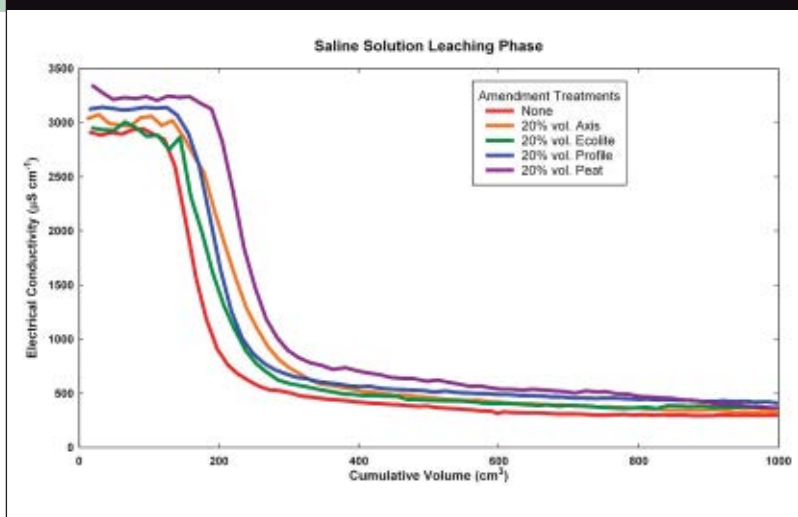
Chloride breakthrough curves — Cl breakthrough curves from the saline solution leaching phase are shown in Fig. 2. The fate of chlorine ions during leaching is important because being an anion, Cl does not interact with the cation exchange sites within the root zones yet can interact with the internal porosity of the inorganic amendments. Thus, any substantial delay, in terms of cumulative volume, of Cl leaching within the inorganic amendment columns would be an indication of such an interaction.

As with leaching of total EC_w , the earliest leaching of Cl occurred for the unamended sand and the latest leaching occurred for the peat with the inorganic amendment treatments intermediate. Thus, the results of Cl leaching show treatment differences that can principally be explained by differences in initial water contents within the experimental columns. Those columns that retained a greater solution volume after draining showed the greatest delay in leaching of Cl. No effects on Cl fate were apparent from the internal porosity of 20 percent by vol. amendment of Axis, Ecolite or Profile.

Sodium breakthrough curves — Na breakthrough curves from the saline solution leaching phase are shown in Fig. 3. Na, being a cation is expected to interact with the cation exchange complex within the root zones. Because the initial column washing solution was dilute $CaSO_4$, it is expected that the columns entering the saline solution loading phase contained very few Na ions on the exchange complex or in solution. Further, because the saline solution contained large quantities of Na ions, one would expect a Na for Ca exchange to occur as the saline solution was progressively introduced into the columns.

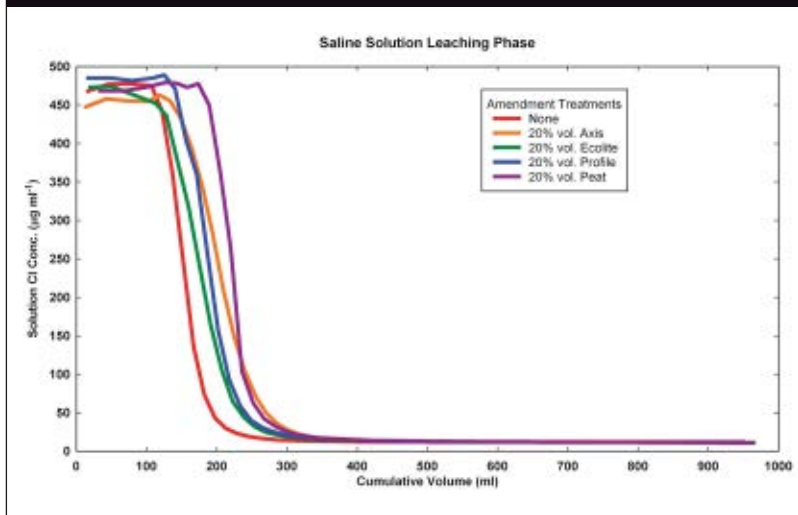
The saline solution leaching phase results of Fig. 3 show initial Na concentrations roughly equal to those at the end of the loading phase. The lower values for Ecolite were due to incomplete saturation of cation

FIGURE 1



Column leachate EC_w values as a function of cumulative leachate volume from the saline solution leaching phase of the column leaching experiment.

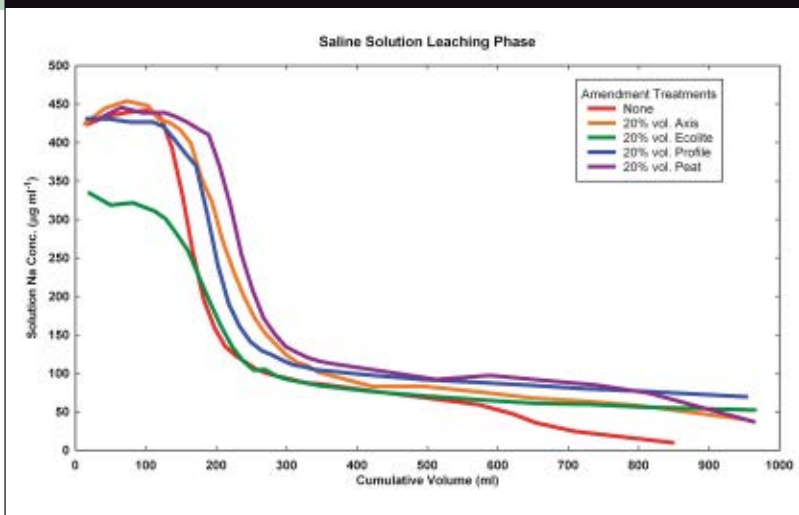
FIGURE 2



Column leachate Cl concentrations as a function of cumulative leachate volume from the saline solution leaching phase.

exchange sites of this column during the loading phase. This corresponds to the large CEC value of the Ecolite amendment. Regardless of the initial concentration differences, however, the earliest leaching occurred for the unamended sand and the latest leaching occurred for the peat with the inorganic amendment treatments intermediate. These results were similar to those of total EC_w and Cl suggesting that treatment differences

Continued on page 44

FIGURE 3

Column leachate Na concentrations as a function of cumulative leachate volume from the saline solution leaching phase.

Continued from page 43

in Na leaching were principally due to differences in initial water contents within the experimental columns. Yet following this initial Na leaching, ending at between 200 and 300 ml, there was a slower, linear decline in Na concentration that appeared quite similar for all amendment treatments. Likely this was due to cation exchange.

Thus, Na release from the root zones appeared to occur at two different rates, an early rapid rate and a later slower rate. But this too can be explained by a rule of cation exchange whereby a given cation is more easily displaced when at a high degree of saturation on the exchange complex than when at a lower degree of saturation. During the early phases of Na leaching it was likely that a high degree of Na saturation occurred on the exchange sites, resulting in easier Na displacement by the incoming solution. As Na was leached, however, the degree of Na saturation declined, making the remaining Na ions harder to displace.

Overall summary

A column leaching experiment was conducted to determine if the presence of inorganic amendments within the root zone had an influence on leaching of salts from a putting green soil profile. Comparisons were made between an unamended sand root zone and root zones containing 20 percent by volume of Axis, Ecolite, Profile, or sphagnum peat.

The columns were first washed with a dilute solution and then infiltrated with a saline solution having EC_w value of 3 dS m^{-1} . Following an overnight period to drain and a drying step to concentrate the salts within the internal porosity, the columns were infiltrated with dilute $CaSO_4$. The final step was the saline solution leaching phase during which samples were collected from the outflow at the bottom of the soil profiles. These leachate solution samples were analyzed for Ca, Mg, K, Na, Cl, SO_4 and total EC_w . The resultant breakthrough curves for EC_w , Cl and Na were all similar with the earliest salt leaching occurring for the unamended sand, and the most delayed salt leaching for the peat amendment. Salt leaching for the inorganic amendments was intermediate. Further, these differences were related to the water contents of the columns prior to leaching. Thus, it appears that leaching differences between root zones are explained by the larger volume of resident, saline solution requiring greater cumulative leaching by the background solution. The Na results also showed an expected cation exchange response between the resident Na ions and the displacing Ca ions.

Consequently, the results of this research failed to find a salinity hazard from the use of high rates of inorganic amendments within turfgrass root zones. Diffusive salt exchange between the leachable, inter-particle porosity and the non-leachable, internal porosity was sufficiently rapid, such that a typical irrigation cycle should displace accumulated salts. Responses due to cation exchange, a perceived benefit of both organic and inorganic amendments, were, however, also apparent.

Ed McCoy and Keith Diedrick are in the School of Natural Resources at The Ohio State University. Inquiries can be directed to mccoy.13@osu.edu.

FUNDING SOURCES

This research was funded by Profile Products, LLC, Buffalo Grove, Ill.

REFERENCES

- Bigelow, C.A., D.C. Bowman and D.K. Cassel. 2004. Physical properties of three sand size classes amended with inorganic materials or sphagnum peat moss for putting green rootzones. *Crop Sci.* 44:900-907.
- McCoy, E.L. and R.C. Stehouwer. 1998. Water and nutrient retention properties of internally porous inorganic amendments in high sand content root zones. *J. Turfgrass Mgmt.* 2(4):49-69.

Ad Index

Advertiser	Page
The Andersons	5
Arysta	13
Audubon	27B
B A S F Corp	CV2, 19
Bayer Environmental	27A, CV4
Becker Underwood	7
Buffalo Turbine	26
Grigg Bros	24
Jacobsen	9
John Deere	CV3
Kochek	2
Nufarm	Insert, 22-23, 25, 35
Richway	2
Solu-Cal USA	29
Spectrum Technologies	32
Standard Golf	Insert
Syngenta	31
Toro	3
Trojan Battery	11
Turfco Mfg	47

This index is provided as an additional service. The publisher does not assume any liability for errors or omissions.

The Superintendents Have Spoken!

Golfdom is the Market's Clear Choice
for Breaking News and Analysis



"*Golfdom* is always current. I like the way they have articles that are discussed amongst the superintendent community and, quite often, *Golfdom* is ahead of the information curve."

— *Dave Coote, Wood Ranch Golf Club, Simi Valley, Calif.*



"*Golfdom* does a wonderful job of covering the stories that no other publication covers. There is a lot of great information in *Golfdom* that you just cannot find in other magazines."

— *Jason Busch, Powder Horn Ranch Golf Course, Sheridan, Wyo.*



"The staff is fantastic, and in general it's a very good read—not just for superintendents, but for owners and GMs and board members, the information is relevant for all parties involved in a golf course."

— *Brian Anderson, Nemacolin Woodlands Resort, Ohio, Pa.*



"*Golfdom* is always on the cutting edge in research and has great articles that both turf scientists and groundworkers can read and understand."

— *Robert Carey, Spring Brook Country Club, Morristown, N.J.*



"The best thing about *Golfdom* is information we get on the political issues as well as the technical issues we are being faced with. Also, the State of the Industry Report is huge for us; we have to know where we are headed and what the future holds."

— *Mark Burchfield, Victoria Club, Riverside, Calif.*



"People don't realize the longevity, how many years *Golfdom* has been in operation. They're a little more cutting edge, they speak more of the truth from what you hear in other magazines. *Golfdom* tells it how it is and isn't afraid to cover the issues."

— *Joseph Hubbard, Broken Sound Club, Boca Raton, Fla.*

Golfdom

The Company Line

NEW PRODUCTS FOR SUPERINTENDENTS

Golf Car Upgrade

Club Car has launched a new 19-mph upgrade known as the Xcelerator for its gasoline golf cars, creating the only factory-authorized upgrade for Club Car vehicles on the market. The kits allow users to purchase new 19-mph vehicles or affordably upgrade their vehicles without sacrificing performance. The Xcelerator is designed and manufactured by Club Car for installation on new or existing vehicles. The product is sold as: The Xcelerator Option, designed for factory installation on new gasoline golf cars; The Xcelerator Clutch Kit, designed for field installation on existing gasoline vehicles. These all-inclusive kits feature a drive clutch, driven clutch, CVT belt, accelerator cable and associated hardware. When used on Precedents, they also include a heat shield, which is already integrated into the DS Player.

clubcar.com

Insect Repellent

Naturally derived **BugBand** insect repellent is now available in a 3-ounce pocket-sized spray lotion, convenient to carry anywhere, including on airplanes.

BugBand insect repellent provide proven protection from biting insects while avoiding synthetic, man-made pesticides. The naturally derived insect repellent is safe for children, adults, pets and equipment and has

been proven to be an effective alternative to traditional pesticides such as DEET.

www.bugband.net



Broadleaf Herbicide

United Turf Alliance announces the introduction of ArmorTech SureZone Turf Herbicide containing four proven active ingredients, including the protox inhibitor sulfentrazone. The other active ingredients in the new herbicide are 2,4-D, MCPP and dicamba. "The sulfentrazone in SureZone herbicide is noteworthy because it causes weed cells to rupture and provides that quick visual response everybody is looking for," United Turf Alliance President Tim Zech said. "As a fourth active, it takes SureZone beyond the traditional three-ingredient herbicide realm and also gives applicators more flexibility for controlling weeds in cool weather." SureZone is a water-based formulation packaged in 2 x 2.5-gallon cases and 55-gallon drums. Labeled for use on most cool- and warm-season turfgrasses, with the exception of St. Augustine, it controls a long list of broadleaf weeds including many tough species.

www.utaarmortech.com

Natural Soil Amendment

TerReplenish from **Feed Earth Now** is a naturally-derived product that starts with OMRI certified EM-1 Microbial Inoculant to process locally-



Geese Control

Superintendents can deter geese and other birds from damaging the course, making a mess and bothering players while beautifying the grounds with the Dori Pole Nylon Pennant System, offered by **Consort Display Group**. With a fiberglass pole and a 15-foot long or 8-foot long nylon pennant, it offers the industry's only non-tangling, swiveling "yoke" bracket, which mounts eye-catching pennants that unpredictably "dance" in the wind to deter geese and birds from locating at golf courses. For golfers, the pennants can also indicate wind force and direction. The Dori Pole comes in 15 standard pennant colors, 23 custom colors, 12 color pairs and four pole heights from 12-feet to 22-feet. The system is easily installed for permanent or temporary display, completely weather resistant and can remain mounted year-round. consort.com

generated food scraps using a high-volume method of Bokashi anaerobic fermentation. No chemicals, animal waste, human waste or synthetic materials are added to the process. The resulting liquid and dry pulp products are thus safe, natural and free of chemicals, lead, heavy metals and pathogens. TerReplenish

treats the soil's microbiotic eco-system instead of treating just the individual plant. Feed Earth Now is a sustainable food scrap recycling firm that is preparing to produce a new kind of natural soil amendment that the company says is superior in performance to compost and synthetic fertilizers. feedearthnow.com

Wireless Time Clock

ExakTime has introduced JobClock Hornet, the first rugged wireless time clock that automatically sends electronic time records back to the office every hour. Hornet is housed in a weatherproof ABS plastic composite case, built to last in any weather condition. Lightweight and portable with a 30-day rechargeable battery, Hornet can easily track time anytime, anywhere. With Hornet updating time records hourly, management can make real-time job adjustments based on 100-percent accurate, timely information. Superintendents can know instantly when workers are about to hit overtime, and ends the frustration of paper time cards.

www.exaktime.com

Creeping Bentgrass

Tee-2-Green announces the launch of its latest advanced creeping bentgrass variety,



PST-0JO. Pure-Seed Testing bred PST-0JO for superior resistance to diseases, high tolerance to temperature extremes and wear, and for the ability to thrive with fewer inputs and less maintenance. Bill Rose, president of Tee-2-Green, says, "PST-0JO is well adapted for low mowing to achieve superior Stimpmeter readings, when those results are desired, and this variety produces less thatch than any other bent in our trials to date." The genetic lineage behind PST-0JO includes Penncross and the Penn As and Gs.

tee-2-green.com

Light Tower

Larson Electronics' Magnalight.com has announced the release of a powerful LED light tower that combines efficiency and high light output with rugged durability. Designed to withstand demanding industrial, commercial and construction environments, this LED light tower provides illumination comparable to metal halide towers while using a fraction the amount of power. The WALQP-1X150LED work area LED light is built to produce powerful illumination and rugged performance with an LED light head producing 14,790 lumens and a tower constructed of heavy gauge steel. This light tower is equipped with a 150 watt LED light head that is IP68 rated waterproof to three meters and a steel quad-pod constructed of heavy gauge steel.

Magnalight.com



Broad Spectrum Herbicide

BioSafe Systems introduces AXXE Broad Spectrum Herbicide. AXXE is formulated as an herbicidal soap utilizing ammonium nonanoate. This active ingredient is NOP compliant and OMRI listed for use in organic production. AXXE is formulated as a liquid concentrate that is mixed with water and is powerful, effective and economical for control of annual and perennial broadleaf weeds, as well as mosses, liverworts and lichens. Made of natural fatty acids, AXXE works by removing, or 'burning,' the waxy cuticle of green vegetation, and will not move through soil to injure nearby plants. AXXE is available in 5, 30, 55 and 275 gallon sizes.

biosafesystems.com



Aerator

Broyhill's AccuAire core aerator features a FlexWing design that allows it to follow the contour of the ground, providing even penetration. The solid steel frame and extra-wide racks add weight to maximize core depth in all types of soils. Core spoons rotate on new sealed roller ball bearings to make the machine last. Special water tanks are optional for extra weight on compact turf. Equipped to use slicer blades or core spoons, the AccuAire is available in two widths, 69 inches or 93 inches. The trailered AccuAire is equipped with a hydraulic cylinder or electric actuator lift, and hooks up easily to utility vehicles.

broyhill.com



THE TURFCO CR-10 MAKES IT HAPPEN!



Whether you're topdressing your fairway, renovating bunkers or relocating material, the Turfco® CR-10, with a four cubic-yard hopper, is the workhorse you've been looking for. Its patented three-position switch, cross-conveyor flow control and self-cleaning hopper make it the most effective material handler available. And now the CR-10 is available with WideSpin™ technology—allowing you to deliver light or heavy topdressing applications at unprecedented widths and depths. All this—plus a three-year warranty. The CR-10. Don't start a project without it.

Call 1-800-679-8201 for a **FREE** on-site demonstration or video.

WWW.TURFCO.COM



THE LEADER. SINCE 1961.

The 19th Hole with...

Paul Grogan, CGCS

TPC Deere Run, Silvis, Ill.



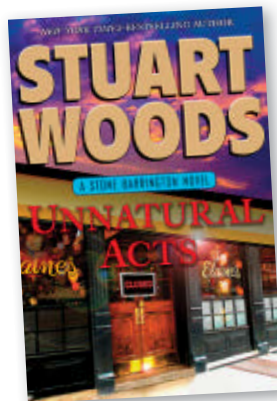
I'll order a beer, as long as we're not playing Deere Run! Coors Light, or whatever is good on draft. And we can settle up all the bets.



I went to Purdue. It's a fine turf school now, but in the '60s, the early '70s, they only had one turf class — it was all ag related.

The first year after I graduated from high school, 1966, I started working at a small 9-hole course in Marion, Ind., called the Elks Country Club. It's where I played golf. My dad had a 30-year membership there. I've been in the business since then.

They gave me a push mower and a weed-eater. Well, there was no such animal as a weed-eater back then, it was an idiot stick. I still call them idiot sticks. It was an old sickle-bar. Any idiot can swing a sickle-bar.



I don't watch a lot of golf on TV. After being at a golf course all day, that's the last thing I want to see.

I don't think people mean to do something wrong. Things just happen. I used to yell and scream a lot. Now, I've got to the point that I just shake my head and ask them what they were thinking. The work can be monotonous. Some people just fall asleep at it.

We used to call people. Now we send email. It's crazy. I've gotten back into calling people. I like to hear people talk.

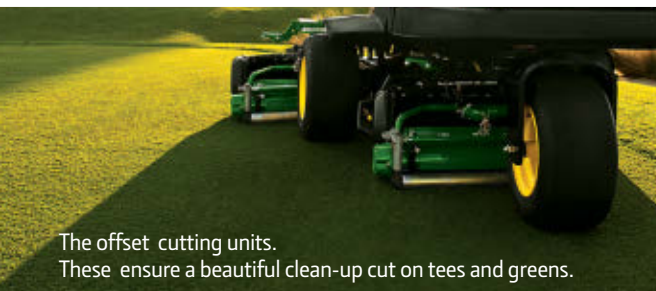
In the winter I read books. Historical fiction, mysteries, some type of action. Stuart Woods does a good series with a character called Stone Barrington. He's done 15 or 16 books in that series. You get hooked on it, and then you're like, "When's the next one coming out?"

We're still banging around what to do when I retire. Probably move closer to our two girls in Indiana. I'll try to find a job at a golf course, mowing rough, so I can be one of those guys that gets yelled at by a guy in a suit for doing something dumb.

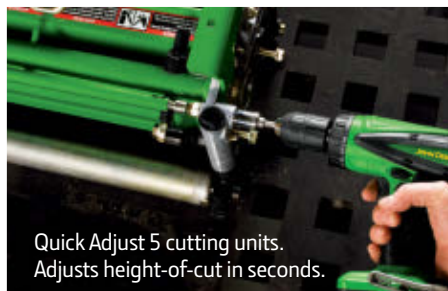
As interviewed by Seth Jones, February 15th, 2012.



How can one greens mower satisfy so many people?



The offset cutting units. These ensure a beautiful clean-up cut on tees and greens.



Quick Adjust 5 cutting units. Adjusts height-of-cut in seconds.



The finish. Create a putting surface players will remember.

The 2500E E-Cut™ Hybrid Riding Greens Mowers. The only greens mower everyone can appreciate.

Only the 2500E E-Cut Hybrid riding greens mowers offer:

- Offset cutting units that greatly reduce “triplex ring” in the clean-up cut, and a durable ball-joint suspension system that reliably follows contours for a flawless finish.
- Fast maintenance, with Quick Adjust 5 cutting units that make it simple for a technician to change height of cut in seconds.
- Proven hybrid components and experience stretching back to 2005.

All this, and surprisingly affordable, too. For a test drive or a virtual walk around, scan the tag or visit us at JohnDeere.com/Golf



JOHN DEERE
GOLF

