

Getting to the Roots of Nitrogen-Use Efficiency

By Richard J. Hull

Nitrogen is the most abundant mineral element in turfgrass and is consequently the fertilizer nutrient most required for turf management. Because of its mobility in the soil and potential for causing environmental problems, nitrogen use in turf management has become a concern at community, state and even national levels. This concern has resulted in local regulations limiting the use of nitrogen fertilizers on golf courses, athletic fields and other large turf areas. National sustainable landscaping guidelines have been proposed that would limit or discourage the inclusion of turf in landscape designs.

This is unfortunate because the research comparing nitrogen losses from several rural and suburban land uses has shown woodlands and lawns to be the least contributors to nitrate pollution (Gold et al. 1990). By comparison, variously managed corn plantings lost 50 times more nitrogen through nitrate leaching into groundwater. Even when nitrate leaching from various landscape components was compared, several plantings leached more nitrate than turf (Hull & Amador 2008). Thus, the science simply does not support discriminating against turf as a landscape feature because of potential environmental harm from nitrate leaching.

The tendency of any vegetative land cover to discharge nitrogen into the environment (groundwater, surface water, atmosphere, etc.) is a function of its nitrogen-use efficiency. That is, the percentage of nitrogen available to a planting that's absorbed by the plants and retained against loss. In field crops, nitrogen-use efficiency is often expressed as the amount of harvested yield obtained per unit of nitrogen available to a crop. This latter definition is useful when food crops are being compared, but it makes little sense when turfgrasses are included in the comparison. For this reason, any evaluation of nitrogen-use efficiency by vegetation types should be based on nitrogen uptake by

plants, assimilation into organic forms and retention against losses to the environment. We have developed these ideas more fully elsewhere (Hull and Liu, 2005).

Recently a team of Australian researchers reviewed the prospects for improving the nitrogen-use efficiency of crop plants based on their root characteristics and functions (Garnett et al., 2009). I thought it might be useful to compare some of their observations on cereal crops with the situation in a turfgrass sod. I will concentrate on comparing their analyses of cereal grasses with what is known about turfgrass nitrogen-use efficiency.

Root/soil interface

Even a casual comparison of cereal crops and turf identifies a number of obvious and significant differences. While both are grasses, cereals are annual grasses grown in rows while turf is composed of perennial grasses grown as a sod. These differences are enormously important when considering the stability of nitrogen in the plant/soil ecosystem. While both plants have fibrous roots, only the turfgrass sod maintains a functional root system throughout the year. This means that only during the growing season does the cereal plant community constitute a sink for available nitrogen in the soil solution. Even then, the roots of an annual grass are most vigorous and capable of absorbing mineral nutrients in the spring and early summer. But this capacity gradually declines as the plant matures and energy is diverted away from the roots and toward grain production. By comparison, both cool- and warm-season turfgrasses exhibit seasonal peaks in root activity. Only during extreme environmental conditions does root function totally stop.

Nitrogen fertilization rates of cereals are somewhat greater than those of turf, and cereals are generally fertilized heavily during the

Continued on page 52

Because cereals recover only 33 percent of fertilizer nitrogen in harvested grain on average, nitrate leaching appears likely.

Continued from page 51

spring and early summer, when root activity is greatest, but rarely in late summer or fall. Cool-season turf is usually fertilized most heavily in the fall to promote recovery of the root system that was damaged during stress conditions of summer. Often, nitrogen is also applied at lower rates in early and late spring. Fertilization of warm-season turf is scheduled more like a cereal crop with greater emphasis on the spring and summer when root growth is most active. Even so, soil solution nitrate concentrations under a cereal crop average 84 parts per million nitrate-nitrogen (Garrett et al. 2009) while the solution of a turf soil averages about 2.5 ppm. This 34-fold greater nitrate concentration in cereal soils certainly makes them more vulnerable to nitrate leaching into groundwater. Because cereals recover only 33 percent of fertilizer nitrogen in harvested grain on average, nitrate leaching appears likely. In fact, the remaining 67 percent of applied nitrogen is lost either as surface runoff, nitrate leached to groundwater, volatilization as ammonia to the atmosphere, or as nitrogen gas and nitrous oxide due to bacterial denitrification of nitrate (Vitousek et al. 1997).

Turf, on the other hand, recovers the equivalent of 65 percent to more than 100 percent of fertilizer nitrogen in clippings, indicating that nitrogen uptake from the soil must be highly efficient. Several studies have shown that retaining clippings on the turf will allow a 35-percent to 50-percent reduction in nitrogen fertilizer with no reduction in turf quality.

Root morphology and density have been shown to influence nitrogen-use efficiency (Garnett et al. 2009). Root-length density, the length of root per volume of soil (inches/cubic inch), is positively correlated with nitrogen uptake by plant roots and negatively correlated with nitrate leaching. Thus, a larger fibrous root mass radiating throughout a greater depth of soil should increase the efficiency of ammonium absorption, and to a lesser extent, nitrate. Nitrate is highly mobile within the soil with 79 percent reaching root surfaces through mass flow and 20 percent by diffusion. Only about 1 percent of absorbed nitrate reaches the roots by interception as a result of root growth through the soil (Barber 1995).

Ammonium, however, is 10 to 100 times less mobile than nitrate since most of it is bound to soil colloids. Thus, a much higher percentage of ammonium would reach root surfaces through interception when elongating roots contact soil colloids. In soils where ammonium is a more significant component of available nitrogen, a greater root length density will markedly increase nitrogen-use efficiency.

Nitrogen transport in grass roots

The carrier proteins that transport nitrate and ammonium across root cell plasma membranes from the soil into living cells have been studied extensively in cereal grasses (barley, corn, oats) but much less so in turfgrass (Hull and Liu 2005). However, published research indicates nitrate and ammonium are absorbed by turfgrass roots every bit as efficiently as they are in cereal grasses, maybe even more efficiently. Within both grass types, there is considerable variability among species and often even more variation among cultivars within species. Thus, the potential exists for genetic improvement in nitrogen transport efficiency in both cereals and turf.

The regulation of nitrogen transport proteins has also been studied and it offers some explanation for differences in nitrogen-use efficiency between cereals and turfgrasses. The presence of ammonium in the soil solution can depress the root absorption of nitrate. Since ammonium is about 15 times more concentrated in soil water under cereals than it is under turf, it likely has a substantially greater inhibiting effect on nitrate uptake by cereal roots than it does on turfgrass roots. This easily explains the 34-fold greater nitrate concentration in the soil solution of cereal soils over that of turf soils and the accompanying much lower nitrate-use efficiency of cereal crops compared to turf.

Elevated nitrate concentrations in the soil solution tend to inhibit root growth, especially the development of lateral roots (Garnett et al. 2009). This reduces root-length density that further depresses nitrogen uptake, probably mostly ammonium uptake, and results in even greater soil water ammonium that further inhibits nitrate absorption. Other fac-

Continued on page 54



Knock out multiple weeds in a single round.

Only Solitare® takes on crabgrass, sedges and broadleaf weeds with no tank mixing required.

Fighting more than one weed problem used to require more than one product. Now there's new Solitare® herbicide from FMC Professional Solutions, the only all-in-one postemergence solution designed to help you control multiple weeds in a single, fast-acting application.

Wherever several weeds like crabgrass, sedges and broadleaf weeds come together, you'll experience the Solitare "sweet spot." That's because Solitare controls or suppresses over 60 weeds without the hassle and cost of tank mixing. Dual-action Solitare herbicide features a patent-pending combination of active ingredients that combats weeds from the foliage down and the root up. Solitare also impacts viability of seeds and tubers within the soil, helping to decrease weed populations this season and next. When multiple weeds gang up on you, there's only one solution you want in your corner: Solitare herbicide.

For more information on Solitare and other solutions from FMC, visit www.fmcprosolutions.com or contact your FMC Sales Representative or local FMC Distributor.

FMC

FMC Professional Solutions

1-800-321-1FMC • fmcprosolutions.com


Solitare®
HERBICIDE

Always read and follow label directions. FMC and Solitare are trademarks of FMC Corporation. ©2010 FMC Corporation. All rights reserved.

Continued from page 52

tors also contribute to the lower nitrogen-use efficiency of cereals compared to turfgrasses. The perennial root systems of a grass sod contribute substantial amounts of organic matter throughout the soil profile as roots continuously die and are replaced. This organic matter supply encourages a complex microbial population that converts dead roots into organic soil colloids that in turn provide cation exchange sites that bind ammonium ions (NH₄⁺). Being in equilibrium with ammonium ions in the soil solution, this colloid-bound reservoir of ammonium maintains a low but stable concentration of ammonium in the soil solution replacing that absorbed by roots or oxidized by microbes. The presence of both ionic nitrogen species in the root environment favors root absorption by helping to maintain ionic balance between root cells and soil solution (Garnett et al. 2009).

Colloidal organic matter also sequesters organic nitrogen within its chemical structure and serves as a slowly available stockpile of soil nitrogen. Soil organic matter accretion can accumulate carbon and nitrogen within the turf-soil ecosystem for about 45 years when it may exceed 4.5 percent of soil dry weight (Qian et al. 2003). From then on, the turnover of soil organic nitrogen is sufficient to support turf growth with little if any fertilizer nitrogen being added. Such a mature turfgrass sod will leach virtually no nitrate to groundwater unless it continues to be fertilized in excess of 25 pounds nitrogen per acre per year.

Accumulation of ammonium and/or amino acids (glutamine) within root cells will suppress nitrate and ammonium uptake by down-regulating the genes that encode for transport protein (Garnett et al. 2009). If this occurs, nitrate can accumulate within the soil solution and become vulnerable to leaching in the event of excess rain or irrigation. Excess nitrate in roots can and likely will be transported to the shoots, especially to the leaves. There, nitrate sends a signal to the roots, probably in the form of glutamine, to suppress further nitrate absorption and root growth.

Excess nitrogen in the leaves also diverts photosynthetic energy (sugars) toward greater shoot growth leaving less available for trans-

location to the roots, further depressing root growth. In cool-season turf, root deterioration can occur during periods of elevated soil temperatures. However, soil microbial activity will be stimulated under higher temperatures, increasing the oxidation of organic matter and the ultimate release of nitrate. Soil nitrate levels will increase and be subject to leaching if root absorption is inhibited. Warm-season turfgrasses are much less vulnerable to high temperature growth inhibition; in fact elevated temperatures stimulate them. All this results in a summer decline in nitrogen-use efficiency, especially in cool-season turf.

Because of their annual lifecycle, cereal grasses are unable to establish the complex association with soil microbes and organic matter metabolism that is characteristic of perennial grasses. Consequently, dramatic increases in their nitrogen-use efficiency may be difficult to achieve. At 33 percent nitrogen-use efficiency, there's room for improvement but Garnett et al. (2009) admit that a clear path to achieving improvement is not evident.

Thus, it appears that turfgrasses inherently pose less of a problem for nutrient loss than do most crop plantings. Grasses have been used for more than a century to stabilize soils and prevent nutrient losses. It seems only reasonable and research clearly confirms that no landscape component offers less threat to the environment than well-managed turf.

Richard Hull is emeritus professor of plant sciences and entomology at the University of Rhode Island.

REFERENCES

Barber, S. A. 1995. Soil Nutrient Bioavailability: A Mechanistic Approach, 2nd Edition, John Wiley, New York.

Garnett, T.; V. Conn and N. B. Kaiser. 2009. Root based approaches to improving nitrogen use efficiency in plants. *Plant, Cell & Environment* 32:1272-1283.

Gold, A. J., W. R. DeRagon, W. M. Sullivan and J. L. Lemunyon. 1990. Nitrate-nitrogen losses to groundwater from rural and suburban land uses. *Journal of Soil & Water Conservation*. 45:305-310.

Hull, R. J. and J. Amador. 2008. Landscape types influence severity of nitrate leaching. *Golfdom/TurfGrass Trends* 64(4):89-93.

Hull, R. J. and J. T. Bushoven. 2009. Does research offer answers to problem of summer decline? *Golfdom/TurfGrass Trends* 65(1):66-70.

Hull, R. J. and H. Liu. 2005. Turfgrass nitrogen: Physiology and environmental impacts. *International Turfgrass Society Research Journal* 10:962-975.

Qian, Y., W. Bandaranayake, W. J. Parton, B. Meham, M. A. Harivandi and A. R. Mosier. 2003. Long-term effects of clipping and nitrogen management in turfgrass on soil organic carbon and nitrogen dynamics: The CENTURY model simulation. *Journal of Environmental Quality* 32:1694-1700.

Vitousek, P.M., H. A. Mooney, J. Lubehenco and J. M. Melillo. 1997. Human domination of Earth's ecosystems. *Science* 277:494-499.

Ad Index

Advertiser	Page No.
AgraQuest	32
Amega Sciences	40
Andersons	CV4
BASF	11, 17, 23, Insert
Bell Laboratories	46
DuPont	47
E-Z-Go	25
FMC	12-13, 41, CV3
GridBee	56
IGCEMA	14
Jacobsen	31
John Deere	48
Kochek	44
NuFarm	28-29, 38, 39
PBI/Gordon	34-35
Petro Canada	CV2
Phoenix Environmental	7
Quali-Pro	5
Rain Bird	45
Reliable Golf	2
Sipcam Advan	30
Sonic Solutions	58
Standard Golf	43
Toro	9
Turfco Mfg.	46
U.S. Aqua Vac	57
Underhill	36, Insert
Valent	3, 33, 55
White Metal Golf	2
TURFGRASS TRENDS	
FMC	53
John Deere	48

This index is provided as an additional service. The publisher does not assume any liability for errors or omissions.



YOU'LL HAVE TOTAL CONTROL OVER PYTHIUM. GOLFERS NOT SO MUCH.

WITH THE NEW CHEMISTRY OF FLUOPICOLIDE AND THE PROVEN POWER OF PROPAMOCARB COMBINED IN ONE PREMIX, STELLAR™ FUNGICIDE PROTECTS YOUR COURSE WITH POWERFUL PYTHIUM CONTROL. AFTER ALL, YOUR TURF IS ALREADY UNDER ENOUGH ATTACK, ISN'T IT?

Stellar™
FUNGICIDE
PROTECT YOUR TURF.™



Products That Work, From People Who Care® | www.valentpro.com | 800-89-VALENT (898-2536)

Read and follow the label instructions before using.

Stellar and Protect Your Turf are trademarks and Products That Work, From People Who Care is a registered trademark of Valent U.S.A. Corporation. ©2008 Valent U.S.A. Corporation. All rights reserved. 08P-1088

The Company Line

■ POND-MAINTENANCE PRODUCTS

Submersible circulator

The new GridBee submersible circulator from SolarBee Inc. improves water quality in ponds, small lakes and other recreational waters. By creating a gentle, near-laminar flow across the surface of the water, the GridBee circulator reduces blue-green algae and helps restore biodiversity. Ideal for golf courses, municipal fishing ponds, lakeshore areas and any small water body susceptible to pond scum, the electric-powered circulator works from beneath the water surface and doesn't detract from the natural environment. One GridBee circulator prevents stagnant water throughout the entire pond surface area. With a flow rate of 400 gallons per minute, the GridBee unit is located 6 to 36 inches beneath the water surface and is available with an optional 10-inch float ball for visibility.

Colorant, algae control, bio treatment

Becker Underwood offers three products for pond maintenance. Black Onyx is a lake and pond colorant. Available in both liquid and

water-soluble packet (WSP) formulas, Black Onyx provides the rich, black color required for a highly reflective, mirror-like appearance.

Admiral Liquid controls the growth of algae and aquatic vegetation in lakes, ponds and other bodies of water while adding a natural-looking blue color.

The company's Lake Pak WSP is a biological treatment for lakes and ponds. A proprietary blend of beneficial microbes effectively degrades excess nutrients to reduce foul odor and sludge in water.

Private-labeled colorants

Amega Sciences offers two private-labeled products for pond management. Black Lake Colorant or Blue Lake Colorant will help to reduce the UV lights that reach the bottom of ponds, lakes or water features. Reduction of UV light blocks light that's vital to plant and algae growth. Pond colorants are a great tool



for improving water color to provide desired aesthetics to any body of water.

They are easy to apply and safe to aquatic life, the company says.

Weed and algae control

SePRO offers Komeen for control of aquatic weeds such as Hydrilla, Egeria and Southern Naiad. Komeen provides consistent and reliable control of these nuisance weeds and more in a wide variety of application situations. Komeen carries no restrictions on how it may be applied or how soon the water may be used after treatment.

K-Tea algaeicide is a good choice for eliminating standing or slow-moving water of unsightly and troublesome planktonic and filamentous algae. K-Tea can be used on a broad spectrum of algae, including Cyanophyceae (blue-green), Chlorophyceae (green), Diatomaceae (diatoms) and Protozoa (flagellates). K-Tea is a copper-based

Continued on page 58

PHOTO BY: ISTOCK INTERNATIONAL INC.



Circulate water for clearest results

You'll love your pond again.

The GridBee™ submersible circulator creates a gentle, near-laminar flow that prevents stagnant water zones and restores your pond or lake's biodiversity. And because the GridBee circulator works from beneath the surface, there's nothing to interfere with the natural look of your recreational water.

For a clear solution that's easy, economical and effective, call us today at **888-495-0104**.

Download our white paper, "Why circulation works."
www.gridbee.com/golf

GridBee™
Submersible Circulators

AMERICA'S #1 LAKE & POND CLEANING SERVICE

OUR SERVICES:

Remove muck and sludge from lakes,
ponds, or any other waterways

Restore waterways to their natural,
clean bottom

Enhance water quality

Unclog intake pipes and springs

Reduce odors

Save you money!

866-989-MUCK (6825)
www.usaquavac.com



Winner of environmental friendly awards across the U.S.A.

Algae Control Without Chemicals!



Join the Clubs!

“SonicSolutions is a major component of our pond management strategy. For the past several years our irrigation pond has stayed algae free. SonicSolutions has helped us obtain certification status with the Audubon Cooperative Sanctuary Program.”

**Matt Ceplo, Superintendent
Rockland Country Club, NY**

“Within a week or two after start up, the algae in the pond died. Since then, the pond has remained algae free. It is now the cleanest of our six ponds without the use of any chemical algicides.”

**Michael Jr. Rohwer, Superintendent
Shadowridge Country Club, CA**

“I installed the SonicSolutions units when my ponds already had algae in them. I was completely surprised how quickly they killed the algae and lowered my chlorophyll levels!”

**Gonzalo Vargas
Coco Beach Golf Resort, Puerto Rico**

Controls Algae With Ultrasonic Waves!

- **Green Solution** - No chemicals
- **Low maintenance** - Simple to use
- **Environmentally safe**
- **Safe for fish, plants, or other aquatic life**
- **Solar available!**
- **Ask us about our 3-Month Rental Demo!**

SonicSolutions[®] LLC
Algae Control Without Chemicals!

1-866-KO-ALGAE
(1-866-562-5423)
sonicsolutionsllc.com

The Company Line

Continued from page 56
product that has proved effective with years of use, the company says. It works best when applied at the first signs of algal blooms.

Algaecide

BioSafe Systems' GreenCleanPRO Granular Algaecide works on contact to suppress and eliminate all types of aquatic algae. GreenCleanPRO's chemistry is an environmentally friendly alternative to algaecides that utilize copper or other harsh chemicals. Superintendents can use GreenCleanPRO in natural or man-made water features.

Ultrasonic waves

SonicSolutions offers ultrasonic algae control used by golf courses to keep their water features and irrigation ponds clear of algae. Environmentally safe, SonicSolutions uses the resonance of the ultrasonic waves to kill algae, yet is safe for fish, plants and other aquatic life. Floating just below the surface, SonicSolutions operates 24 hours a day on less than 10 watts of power providing coverage for up to 6 acres per unit depending on conditions. Multiple units are used in larger installations.

Herbicide

Avocet PLX, with the active ingredient glyphosate, is a systemic herbicide from **Phoenix Environmental Care** that provides control of emergent and floating aquatic plants, weeds, grasses and terrestrial and ditchbank woody brush in flowing and non-flowing fresh and brackish water. It can also be used on shorelines, landscapes, turf and non-crop areas. As a fast-acting herbicide, Avocet PLX controls the entire plant and minimizes regrowth.

Algae control

Unlike traditional copper-based products, **Aquatrols'** Radiance doesn't require agitation, special equipment or complicated techniques to apply. Simply pour into your water fixture and let Radiance self-disperse. Radiance kills

algae and protects against re-infestation for a full month. Radiance also self-disperses from a single application point, keeps algae blooms from occurring and is safe for fish-bearing ponds.

Lake and pond cleaning

U.S. Aqua Vac Inc. performs lake and pond cleaning nationwide. The company specializes in sludge, silt and sediment removal from large or small lakes and ponds of residential, municipal and commercial facilities. U.S. Aqua Vac utilizes state-of-the-art equipment and well-trained personnel who remove the mucky silt responsible for most environmental damage in lakes and ponds. Instead of using outdated, costly and less-effective drain-and-dig methods, U.S. Aqua Vac incorporates the latest and most effective pond and lake restoration and cleaning techniques, including robotic machines, barges and commercial divers.

Colorants

Milliken offers Black Pearl Lake & Pond Colorant, a blended formulation of water-soluble dyes and inert ingredients. It's designed for use in lakes, ponds, decorative water features and other impounded bodies of water with limited outflow. Black Pearl Lake & Pond Colorant beautifies murky, cloudy or off-colored water with a natural black tint. Milliken also offers Mirage Blue Lake & Pond Colorant. It beautifies murky, cloudy or off-colored water with an aqua-blue tint.

Pond dye

Precision Laboratories Inc. offers Jet Black EZ SoluPak. Although blue has long been the traditional color of choice for lake and pond colorants, professionals are now considering black because of its mirror-like appearance. Jet Black EZ SoluPak is a blend of environmentally friendly, non-toxic black dyes specially formulated to reduce sunlight penetration and, when applied to any water feature, will impart a natural, black color. ■

GOLFDOM (ISSN 1526-4270) is published monthly (12 issues per year) by Questex Media Group LLC, 306 W Michigan Street, Suite 200, Duluth, MN 55802. Corporate office: 275 Grove St., Suite 2-130, Newton, MA 02466. Accounting, Advertising, Production and Circulation offices: 306 W. Michigan St., Suite 200 Duluth, MN 55802-1610. **Subscription rates:** One year \$43 (U.S. and possessions), \$65 (Canada and Mexico) and \$98 (all other countries). Air expedited service is available in countries outside the U.S. and Canada for an additional \$75 per year. Current issue single copies (prepaid only) \$5 (U.S. and possessions), \$7 (Canada and Mexico) and \$8 (all other countries). Back issues (if available, prepaid only) \$10 (U.S. and possessions), \$14 (Canada and Mexico) and \$16 (all other countries); add \$6.50 per order shipping and handling for both current and back issue purchases. Periodicals postage paid at Duluth MN 55806 and additional mailing offices.



POSTMASTER: Please send address changes to *Golfdom*, P.O. Box 1268, Skokie, IL 60076-8268. Canadian G.S.T. Number: 840033278RT0001, Publications Mail Agreement number 40017597. Printed in the U.S.A. **Copyright 2010 by Questex Media Group LLC.** All rights reserved. No part of this publication may be reproduced or transmitted in any form or by any means, electronic or mechanical, including photocopy, recording, or any information storage and retrieval system, without permission in writing from the publisher. Authorization to photocopy items for internal or personal use, or the internal or personal use of specific clients, is granted by Questex Media for libraries and other users registered with the Copyright Clearance Center, 222 Rosewood Dr., Danvers, MA 01923, phone 978-750-8400, fax 978-750-4470. Call for copying beyond that permitted by Sections 107 or 108 of the U.S. Copyright Law. For those not registered with the CCC, send permission request to questexpermissions@theygroup.com or 800-494-9051, ext 100.



Intelligent Irrigation

What is your root zone telling you?



TDR 300
Soil Moisture Meter

- Hand Water Objectively
- Monitor Irrigation Uniformity
- Schedule Irrigation Effectively
- Reduce Water Usage



The LCD screen displays:

- Current Measurement
- Rod Length
- Number of Readings
- Running Average



Rods available in lengths of 1.5", 3", 4.8", and 8"

"Two weeks after owning it, I couldn't envision being without it. The TDR 300 simplifies and quantifies the critical balance between adequate soil moisture and playability of green surfaces."

Sean O'Connor, CGCS
Forest Akers Golf Courses
Michigan State University

www.specmeters.com/TDR300

Spectrum
Technologies, Inc.
"To Measure Is To Know"

12360 S. Industrial Dr. East
Plainfield, Illinois 60585
Toll Free: (800) 248-8873
Email: info@specmeters.com

REQUEST YOUR
FREE CATALOG



Channeling George Carlin

This is the column you've always wanted to write. You know, the one where you've just come back from the green committee meeting and you have to sit down and do what you most definitely weren't trained to do as a golf course superintendent: write a 400-word update for the club newsletter.

Face it, there has been a time when you had a few too many Budweisers and you said to yourself, "I'd like to tell these people what I really think." But we know that wouldn't be wise in this, uh, economic environment.

So it's Shack to the rescue! Please read this letter and let me know if it's as therapeutic for you as it is for me.

GREEN CLIPPINGS

By The Dude Who Grows Your Grass

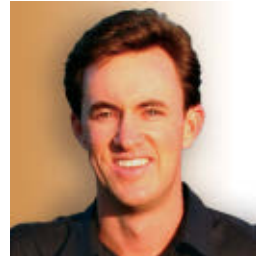
We've seen really lousy growing conditions the last month and that hasn't stopped many of you heathens from flagging me down to ask me when things will get better.

Let's get something straight: I don't take questions or pithy comments from grown men wearing anklet socks, and I certainly don't have time for someone who sucks on a stinky cigar and then deposits it back in his as-seen-on-TV golf car cigar holder.

And ladies, I appreciate that you feel our fairway mowers are contributing to global warming, and I hear you when you complain that noise levels are such that your hearing is deteriorating. But that's all part of my grand plan to render you deaf so I can tell you what I really think

I KNOW YOU CAN'T TELL YOUR GOLFERS THIS,
BUT YOU JUST MIGHT FIND IT THERAPEUTIC
TO HELP YOU THROUGH YOUR WORKING DAYS

BY GEOFF SHACKELFORD



of your silly hats and your goofy swings.

Now, about the excessive amount of *Poa annua* creeping into the greens we rebuilt to United States Golf Association specs, even though our entire course is built on sand. Your faithful green committee was presented a plan by yours truly — in a PowerPoint and printed out in color, no less — explaining why I needed to purchase a new \$15,000 sprayer. I explained to them that we have these things called chemicals that we can safely apply to the grass that helps fight the *Poa* that you all find so positively horrific.

They countered that we didn't have the funds to purchase this much-needed upgrade to our equipment, even though I brought them down to the maintenance facility to see our current sprayer, which one member of the committee laughed at due to its deteriorated state. Big help he is, by the way.

After little deliberation, the committee voted unanimously — is there any other way with Chairman Group-think running the show? — to pass on purchasing a new sprayer. It's at this point that I note the club recently spent \$100,000 reupholstering the Mixed Gender Grill in a homage-to-

St. Andrews theme. (What a great name by the way, the Mixed Gender Grill. Which genius came up with that?).

Anyway, so our chairs have images of Old Tom Morris and Allan Robertson whapping away with their hickories in a lovely knitted pattern to support your big fannies. Great use of the club's rainy-day fund. Ought to really sell a lot of memberships instead of spending a little to protect our \$4-million course renovation.

Oh, and that reminds me, the architect we hired to do that work, even though he made about \$280,000 on that project, is hard up for work and now wants to charge us \$400 an hour for visits to develop a new master plan. Your brilliant green committee chairman is actually entertaining the idea because our architect got him a round on Pine Valley last month.

There's a hot little piece of gossip to chew on as you waste away in the Mixed Gender Grill, lunching on Chef Boyardee's daily offering to the world's great grade-school cafeterias.

Follow Shack, Golfdom's Contributing Editor, at www.geoffshackelford.com or via [Twitter.com/GeoffShackelford](https://twitter.com/GeoffShackelford).