



AND YOU'VE ALREADY MADE HIS DAY.

SOLUTIONS FOR BETTER TURF | CELEBRATING 70 YEARS OF INNOVATIVE TECHNOLOGY | UNPARALLELED CUSTOMER SERVICE

Cleary has always been and will remain an excellent resource for superintendents. More than a supplier of superior turf products, we're your long-term partner in creating turf conditions that will make any golfer's day. For more information about our products, **contact your local distributor** or visit www.clearychemical.com.

Make it a Cleary Day.



INSIST ON AUTHENTIC CLEARY TURF PRODUCTS:

3336 F | 3336 WP | 3336 G | 3336 GC | 3336 Plus | 26/36 | Alude
Endorse | Spectro 90 | Protect DF | Spotrete

PROUD SUPPORTERS OF: GCSAA, NGCOA, RISE, USGA, National Golf Association and 38 regional superintendent organizations

Visit us at GIS Booth #1409

Continued from page 29

“Certainly the advent of the additional exhibitors makes it difficult to be in an impactful location,” Kinkead says. “Oftentimes, people tout that there are more decision makers at GIS, but fundamentally, if a golf course is going to buy a product like a topdresser, then the superintendent is going to make that decision. If an owner or general manager is knowledgeable

about it, then that can be helpful, but superintendents, by and large, are going to make that call. So we’d like to have more superintendents at the show.”

Exhibitor satisfaction has dropped each year since the GCSAA’s last solo show in San Diego in 2004. Self-reported sentiment surveys conducted by GCSAA reveal that exhibitors’ impressions of qualified buyers, the

2008 Show Stat:

\$9 million

GCSAA’s expected trade show revenue

A Test Drive Could SAVE You \$25,000

See us
in Booth
4259
at the
GIS Show!

Lastec introduced articulating rotaries to the turf industry in 1990. Since then other manufacturers have followed our lead and offer articulating rotaries that are less efficient, less accurate, far less maneuverable, and far more expensive.

You owe it to yourself, your budget, and your players to test the best before you pay more for just a name. Besides, after the test drive, you’ll likely agree that the best name...at any price... to meet your rotary needs is Lastec.

See what is NEW for 2008 at the GIS Show.



LASTEC

1.800.515.6798 • lastec.com/a569

show’s importance for business and whether it was a good return on investment has fallen each year under the GIS banner. That said, three years barely makes a trend. Besides, Hurricane Katrina forced a last-minute relocation to Atlanta in 2006, and West Coast shows (last year was in Anaheim, Calif.) typically have lower turnout and exhibitor satisfaction. Overall exhibitor satisfaction last year was the lowest since before 9/11 even though attendance was up, and Anaheim set a record for qualified buyers. So location and market conditions clearly play a significant role in vendor impressions.

Is anyone buying?

Some younger superintendents might consider it odd to actually purchase products and equipment at a trade show, but it was the norm just 10 years ago, sources say. Then, the Internet changed the way people research goods and services. Superintendents might not make purchases online, but few show attendees are willing to make purchases at a trade show without doing some additional research in cyberspace.

“No matter how appealing we try to make our product offerings and try to incentivize purchases or lease orders at the show for future delivery, people aren’t doing it.” Knoepp says. “People would prefer to go onto the Internet to order products at their convenience, even to the point of ignoring price incentives.”



Attendees can learn about the products and services of more than 1,000 exhibitors at this year's Golf Industry Show.

The downside to the digital marketplace for exhibitors is justifying trade-show expenses. Without a concrete return on investment or a way to ascertain whether a lead came from a trade-show conversation, Internet search or word of mouth, it's becoming increasingly difficult to justify uprooting staff and normal business routines to attend trade shows in general, especially if a company's booth is relegated to a low-traffic area.

But for the most part, buyer activity is a small part of the show. Just as important, vendors say, is the opportunity to chat with the highest concentration of superintendents of any annual event. The show also provides valuable networking and education opportunities for distributors and resellers of chemicals and equipment, for example. With the "who's who" of the industry gathered in one place, it might be those after-hours activities that help justify the trip. Plus, you might be able to shop for products online, but you can't really simulate a trade show or networking venue of this size in any virtual way.

"I'll worry that the Internet will harm trade shows when I can taste a virtual meal," says Stephen Schuldenfrei, president of the Trade Show Exhibitors As-

sociation, which helps exhibitors execute better trade shows.

Another challenge vendors experience this year and probably next year as well is the fact that golf has seen better times. Rounds are about flat, and courses are closing faster than they're opening. Commodity prices are at or near all-time highs, and businesses, for the most part, are operating under fairly tight margins.

So it might be difficult for some companies to justify a price hike of more than 18 percent this year for GIS exhibit space.

2008 Show Stat:

300,000

Expected square feet of exhibit space

After four years without an increase, exhibitor rates rose this year from about \$19 per square foot to about \$23, which didn't go unnoticed by some players in an industry that has been ebbing for years.

Turfco will have a slightly smaller booth this year, partly because of the

Continued on page 37



3336 PLUS PROVIDES UP TO 50% MORE DISEASE CONTROL.

- Highly effective, broad-spectrum turf fungicide with ClearTec™ Activation Technology
- Unique formulation provides a more effective use of the active ingredient thiophanate-methyl, resulting in longer lasting disease control than other products containing the same ingredient

SOLUTIONS FOR BETTER TURF

For more information on 3336 Plus or other Clearly turf products, contact your local distributor or visit www.clearlychemical.com.



Make it a Clearly Day.

Read and follow all label directions. The Clearly logo and 3336 Plus are trademarks of Clearly Chemical Corporation. ©2008 Clearly Chemical Corporation.

HONOR THE

WE HONOR THE GAME THROUGH OUR ATTENTION TO DETAIL. At Club Car, our devotion relationship with us and discover how our creative business solutions can help you succeed. Visit us in

THE GAME.



to the game — and our customers — is reflected in everything we do. Build a Booth #2053 at the Golf Industry Show. Visit www.clubcar.com or call 1.800.CLUBCAR.

Club Car



Is He That Good, Or Is It Just
Tee-To-Green, Dollar-Spot-Free BETTER TURF™?

It's the turf ... because it's been treated with **Emerald® fungicide**. A different class of chemistry for dollar spot control, **Emerald** can effectively control dollar spot that has developed resistance to other fungicides. And with a new lower price, you can use **Emerald** everywhere — so even your tees and fairways are clean and green.



Emerald
FUNGICIDE

betterturf.com | 800-545-9525



BASF

The Chemical Company

Always read and follow label directions.
Emerald is a registered trademark and Better Turf is a trademark of BASF.
© 2007 BASF Corporation. All rights reserved.

Is GIS Diluted?

Continued from page 33

higher costs associated with attending the show. But the primary concern, Kinkead says, is the years to come. As the company continues to expand its product offerings, it might not be able to justify the added expense of more booth space to showcase its full portfolio.

"The rates have an impact on what you are going to do at the show in terms of the size of the booth this year and the size of the booth going forward," Kinkead says. "Clearly, the golf industry is not going to be in a boom like it was in the 1990s, and now is a hard time for an increase in rates without necessarily an increase in the number of golf courses attending the show. That's a very difficult thing for us to look at. Our industry is not growing leaps and bounds, so we would certainly prefer to see incremental increases."

Architect Todd J. Clark of CE Golf Design is another exhibitor that won't be making the \$8,000 trip (includes booth space and travel) this year after exhibiting for the past five years. He had a hard time justifying the expenses this year, even though he acknowledges that Orlando likely will have a better draw than a West Coast show.

But the foremost reason he won't attend isn't because of attendee dilution or expenses. He's not too keen on the show's points system, which allows exhibitors to choose the selection order for booth space according to how long they've exhibited and how much money they've spent with the associations and show partners during the course of the year.

"The problem I had last year was the way the show bases its point system," Clark says. "We were stuck off in a corner, completely away from all the other designers who have done it for years and spend more money on booth space. So they have a competitive edge, and we get lost."

More turf maintenance companies echoed a similar sentiment last year as exhibitors with more priority points from the builders, owners and managers jockeyed for premium booth space. It appeared some

turf companies with fewer priority points were pushed down the totem pole.

"One thing I'm a little concerned about, not so much for us but what I hear from smaller distributors, is that it's gotten so large that some of the smaller distributors feel like they're stuck out on the back 40," says Mike Bandy, marketing manager of turf products for Andersons Golf Products. "They really need to make sure that some traffic gets out to some of those other areas."

No turf maintenance companies were bumped off the main isle last year due to

2008 Show Stat:

1050

Expected number of exhibitors

exhibits from club managers, says GCSAA Communications Director Jeff Bollig. That perception might have perpetuated because GIS administrators sprinkled CMAA exhibitors throughout the trade-show floor to give them better visibility in their first GIS.

And although it might be unpopular among some smaller vendors, using a priority points system is fairly common in the trade-show business, Schuldenfrei says.

Of course, the points system gets tricky when multiple associations merge shows, and there isn't a volume precedent to copy. There are several examples of associations that have merged their respective shows like GIS, but it's not an industry trend, Schuldenfrei says.

"I can understand the desire to merge shows because it broadens reach. If the show is able to broaden all sectors, then it works well," he says. "But if the core constituency sees it as noncompatible, then it doesn't work well, and each individual show is essentially the same but now has a new set of issues."

Those issues could be attendee dilution, exhibitor dilution, higher costs due

Continued on page 39



THE GOLF CAR TECHNOLOGY REVOLUTION BEGINS ON JANUARY 31, 2008.

New technologies are everywhere. But which ones will have a real impact on your operation? At Club Car, we can't wait to show you our latest innovations: powerful, proprietary technologies that can enhance revenue and fuel bottom line growth. For 50 years, we've helped revolutionize the game with a passionate commitment to our customers' success. Don't miss the next revolution, beginning in Booth #2053 at the 2008 Golf Industry Show in Orlando. Please visit us at www.clubcar.com. Or call us at 1.800.CLUBCAR.

ClubCar

HONOR THE GAME.

Continued from page 33

higher costs associated with attending the show. But the primary concern, Kinkhead says, is the years to come. As the company continues to expand its product offerings, it might not be able to justify the added expense of more booth space to showcase its full portfolio.

"The rates have an impact on what you are going to do at the show in terms of the size of the booth this year and the size of the booth going forward," Kinkhead says. "Clearly, the golf industry is not going to be in a boom like it was in the 1990s, and now is a hard time for an increase in rates without necessarily an increase in the number of golf courses attending the show. That's a very difficult thing for us to look at. Our industry is not growing leaps and bounds, so we would certainly prefer to see incremental increases."

Architect Todd J. Clark of CE Golf Design is another exhibitor that won't be making the \$8,000 trip (includes booth space and travel) this year after exhibiting for the past five years. He had a hard time justifying the expenses this year, even though he acknowledges that Orlando likely will have a better draw than a West Coast show.

But the foremost reason he won't attend isn't because of attendee dilution or expenses. He's not too keen on the show's points system, which allows exhibitors to choose the selection order for booth space according to how long they've exhibited and how much money they've spent with the associations and show partners during the course of the year.

"The problem I had last year was the way the show bases its point system," Clark says. "We were struck off in a corner, completely away from all the other designers who have done it for years and spend more money on booth space. So they have a competitive edge, and we get lost."

More turf maintenance companies echoed a similar sentiment last year as exhibitors with more priority points from the builders, owners and managers jockeyed for premium booth space. It appeared some

turf companies with fewer priority points were pushed down the totem pole.

"One thing I'm a little concerned about, not so much for us but what I hear from smaller distributors, is that it's gotten so large that some of the smaller distributors feel like they're stuck out on the back 40," says Mike Bandy, marketing manager of turf products for Andersons Golf Products. "They really need to make sure that some traffic gets out to some of those other areas."

No turf maintenance companies were bumped off the main isle last year due to

2008 Show Stat:

1050

Expected number of exhibitors

exhibits from club managers, says GCSAA Communications Director Jeff Bollig. That perception might have perpetuated because GIS administrators sprinkled CMAA exhibitors throughout the trade-show floor to give them better visibility in their first GIS.

And although it might be unpopular among some smaller vendors, using a priority points system is fairly common in the trade-show business, Schudlenfei says.

Of course, the points system gets tricky when multiple associations merge shows, and there isn't a volume precedent to copy. There are several examples of associations that have merged their respective shows like GIS, but it's not an industry trend, Schudlenfei says.

"I can understand the desire to merge shows because it broadens reach. If the show is able to broaden all sectors, then it works well," he says. "But if the core constituency sees it as noncompatible, then it doesn't work well, and each individual show is essentially the same but now has a new set of issues."

Those issues could be attendee dilution, exhibitor dilution, higher costs due

Continued on page 39

THE GOLF CAR TECHNOLOGY REVOLUTION BEGINS ON JANUARY 31, 2008.

New technologies are everywhere. But which ones will have a real impact on your operation? At Club Car, we can't wait to show you our latest innovations: powerful, proprietary technologies that can enhance revenue and fuel bottom line growth. For 50 years, we've helped revolutionize the game with a passionate commitment to our customers' success. Don't miss the next revolution, beginning in Booth #2053 at the 2008 Golf Industry Show in Orlando. Please visit us at www.clubcar.com. Or call us at 1.800.CLUBCAR.

Club Car

HONOR THE GAME.



Disarm®

Protection From Tee To Cup™

Now in New, More Economical
DISARM® Fairway Pack™
One Gallon Jugs



Wherever you need disease control, you need DISARM®.

University trials prove that DISARM® Fungicide provides unsurpassed strobilurin disease control. And because it's priced at a more affordable cost per acre than competitive strobilurins, you can apply DISARM on fairways and greens throughout your entire golf course. Used alone or in combination with other non-strobilurin fungicides, DISARM controls all major turfgrass diseases, including brown patch, zoysia patch, summer patch, gray leaf spot, anthracnose and pythium. Plus, it is the only strobilurin labeled for control of light-to-moderate infestations of dollar spot. To learn more, contact Arysta LifeScience North America Support Services at 1-866-761-9397 or visit www.arystalifescience.us/disarm.

Always read and follow label directions. DISARM is a registered trademark of Arysta LifeScience North America Corporation. The "Protection From Tee To Cup" slogan and Fairway Pack are trademarks of ArystaLifeScience North America Corporation. The Arysta LifeScience logo is a registered trademark of Arysta LifeScience Corporation. © 2007 Arysta LifeScience North America Corporation. DSM-063



Arysta LifeScience

Harmony In Growth

Is GIS Diluted?

Continued from page 37

to the larger venues and large-scale growth that potentially could render the show too difficult to navigate.

Outgrowing the Pains

Most new business ventures face learning curves. And all trade shows battle retention because some shows might not be suited to a particular company. So overall, GIS is huge, successful show, judging by its incremental growth and feedback from vendors and attendees.

More than half of respondents of a recent Golfdom survey say they enjoyed the show immensely, versus 28 percent who say they liked it better when it was superintendents only.

The success largely has been due to GCSAA, which continues to analyze processes to deliver better value to attendees and vendors. It doesn't really have a choice. The association lives and dies by its show, which brought in more than half of its \$19.2 million revenue in 2007 (\$8.7 million from the trade show and \$1.2 mil-

other goods that are purchased by certain groups (will be clearly marked and grouped)."

GIS also offers incentives for new vendors so they can capture premium booth space. GIS reserves a few 10-foot by 10-foot booths on the main isle for new exhibitors as part of its New Product Showcase. It's an incentive to grow the show and offer newcomers a premium position to peddle their wares.

And the changes appear to be working. Despite a handful of growing pains, vendors, by and large, are satisfied with the changing demographic and show diversity.

"For our business, I think the merger was a good move," says Norm Poppe, general manager for the Applewood Seed Co. in Arvada, Colo. "We're in the wildflower seed business, so we're trying to sell the beautification of the golf course, which is something that management oftentimes can relate to more than the performance parts of the golf course. So we were pleased to talk with them because we feel that those people are looking at our product in a different way than superintendents."

Applewood, a 25-year veteran of the GIS and the GCSAA show, formally attended more than 20 shows, but GIS is the only one that continues to generate enough foot traffic and qualified buyers to justify the expense. It helps that the company's longevity secures it a good opportunity to choose a premium booth location.

You won't have any trouble finding the usual turf suspects, either. Large chemical and equipment manufacturers have secured their places on the main isle through longevity and investments into various industry foundations.

But do a favor for the GCSAA, GIS and some of the smaller vendors: When two roads emerge from the main isle, try taking the one less traveled. And even though your feet ache, your stomach growls, your head hurts and your eyelids droop, fight on to that hidden vendor who just might be selling what you're looking for. ■

2008 Show Stat:

25,000

Expected number of attendees

lion from the education conference).

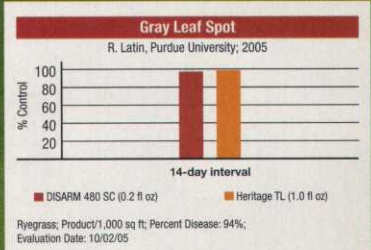
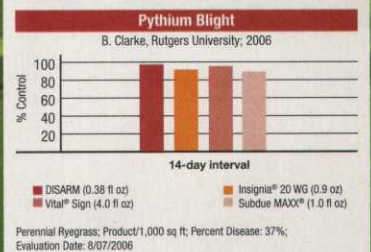
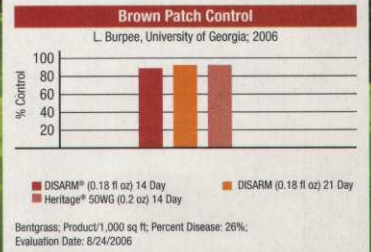
And GCSAA will implement more innovations at the show this year. Bollig says GIS will offer better segmentation than last year, using different carpet colors, for example, to help differentiate niche exhibitors. Attendee badges will have clear notations of GCSAA, CMAA or NGCOA as well, so exhibitors know with whom they might be talking.

"We've made the solution centers to keep people on the trade show floor, we've moved speakers onto the trade show floor, and we've created different configurations and harder segmentations," Bollig says. "The club managers exhibits will all be on one end, and

Disarm[®]

Protection From Tee To Cup[™]

Greens control with fairway affordability.



Insignia is a registered trademark of BASF. Vital is a registered trademark of Luxembourg Industries (Pamol) LTD. Heritage and Subdue MAXX are registered trademarks of a Syngenta Group Company.



Arysta LifeScience

Harmony In Growth

