

Toro® Groundsmaster® 3500-D and Reelmaster® 3100-D: Two innovative trim mowers with the Sidewinder™ cutting system. The reels on the 3100-D and the ground-following rotary decks on the 3500-D move side to side for superior trimming.



Toro® Multi Pro® 1200 and 1250 sprayers: Featuring the innovative Spray Pro™ control system that directly links flow rate to ground speed ensuring precise application rate.



Who to better understand a perfectionist than a perfectionist.

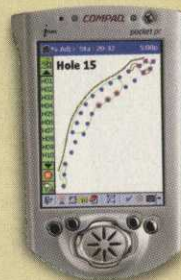
At Toro we know when it comes to your course, no detail is too small. That's why pros like you a
And keep it looking great year after year. To us, it's the perfect relationship. For more information, contact yo



© 2001 The Toro Company



Toro® Workman® 1100 and 2100 vehicles: With the most capacity and power in their class, these vehicles get more done. They also feature rattle-free plastic beds for a quieter ride.



Toro® Prism®: Palm size control that interacts with your Toro® SitePro® control system to manage your irrigation system quickly and accurately from the field.



Toro® Greensmaster® Flex 21: The only greens mower that flexes with the contour of greens to virtually eliminate scalping.

Circle No. 101

the best source for new ideas on ways to make it look great.
Toro distributor at 1-800-803-8676 or visit us at TORO.com.



www.toro.com

Golfdom

MAY 2001 • VOLUME 57 • NUMBER 5

Vanquish Vandalism

30 In Other Words

Hispanics may now or could eventually comprise a large portion of your crew. What are you doing to improve communication?

By Larry Aylward



40 The Lyon King

Dennis Lyon is his name, and Aurora, Colo., is his domain. His management style is one reason why the city's municipal courses are some of the best in the country.

By Jason Stahl

44 About Adjuvants

The right adjuvant mixed with the right herbicide can lead to optimum weed control in post-emergent applications. But how many superintendents know that?

By Larry Aylward



cover story

BY FRANK H. ANDORKA JR.

Vandalism exacts more than a financial toll — it also demoralizes superintendents and their crews. Find out what steps you can take to prevent it from happening to you.

24

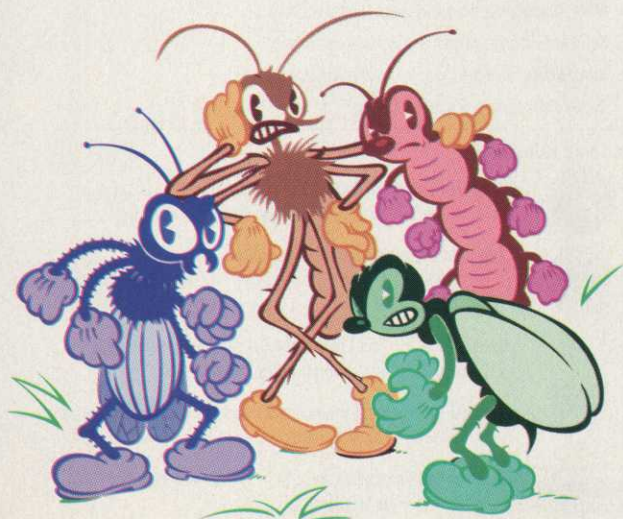
About the cover

This time, at least, we know who created the vandalism. Arcadia, Calif.-based illustrator Roger Motzkus accurately captured the sickening violence of a truck tearing the heart out of the green.

Credit where it's due— We forgot to credit GCSAA for the photo of Norman Schwarzkopf that appeared in our April issue. Thanks, GCSAA.

News with a hook

16 Here Today,
Consolidated Tomorrow



50 Insidious Insects

Experts fearlessly forecast which insects will be on the Most Wanted list.

By Frank H. Andorka Jr.

columns

12 Flagstick

Cheers and Jeers,
Spring Edition

14 Pin High

Management By
The Golden Rule

23 Shades of Green

Overwhelmed By
Overseeding?

38 Designs On Golf

For the Love of
Simplicity in Design

48 Dave's World

It's a Bird, It's a
Plane, It's a ...

68 Out of Bounds

Record Albums

real-life solutions

54 X Hole an Xcellent Idea

Superintendent builds spare
hole to play when there's work
to be done.

departments

6 Going Postal

8 Events

16 Off the Fringe

20 Hole of the Month

61 Tips: Recruiting Hispanics

62 Leaders

64 Company Line

67 Classifieds

Golfdom

www.golfdom.com

EDITORIAL STAFF

- Pat Jones** PUBLISHER/EDITORIAL DIRECTOR 440-891-3126 pjones@advanstar.com
Larry Aylward EDITOR 440-891-2770 lalward@advanstar.com
Frank H. Andorka Jr. ASSOCIATE EDITOR 440-891-2708 fandorka@advanstar.com
Geoff Shackelford CONTRIBUTING EDITOR 310-451-5877 geoffshackelford@aol.com
Joel Jackson CONTRIBUTING EDITOR 407-248-1971 flgrn@aol.com
Mark Luce CONTRIBUTING EDITOR 785-841-6044 mluce@sunflower.net
Dr. Karl Danneberger CHIEF SCIENCE EDITOR danneberger.1@osu.edu
Lisa Lehman ART DIRECTOR 440-891-2785 llehman@advanstar.com
Kim Traum SR. GRAPHIC DESIGNER 440-891-3175 ktraum@advanstar.com
Mike Klemme CHIEF PHOTO EDITOR 580-234-8284 mkleme@golffoto.com
Sue Gibson EXECUTIVE EDITOR 440-891-2729 sgibson@advanstar.com
Vernon Henry GROUP EDITOR 440-826-2829 vhenry@advanstar.com

GOLFDOM ADVISORY STAFF

- Joe Baidy**, CGCS, TURNING STONE GC
Cliff Beckmann, THE WESTIN SALISHAN LODGE & GOLF RESORT
Jan Beljan, ASGCA, FAZIO DESIGN
Jerry Coldiron, CGCS, LASSING POINTE GC
Kevin DeRoo, BARTLETT HILLS GC
George Frye Jr., OCEAN COURSE AT KIAWAH
Bob Graunke, CGCS, TIDEWATER GC & PLANTATION
Steve Hammon, TRAVERSE CITY G&CC
Alan Hess, CGCS, GOLF PARTNERS MANAGEMENT LTD.
Armand LeSage, WHITE BEECHES G&CC
Jim Husting, CGCS, WOODBRIDGE G&CC
Rod Johnson, CGCS, PINE HILLS CC
Tom Kastler, CLUB AT RUNAWAY BAY
Bob Lohmann, ASGCA, LOHMANN GOLF DESIGN
Walter Mattison, (IN MEMORY)
Bil Montague, CGCS, MG
Don Naumann, SIERRA PACIFIC TURF
Jim Nicol, CGCS, HAZELTINE NATIONAL GC
Doug Petersan, CGCS, CC OF AUSTIN
Joel Ratcliff, CGCS, WORLD TOUR
Mike Rothenberg, CGCS, SHARON HEIGHTS G&CC
Ken Sakai, GOLF PACIFIC MANAGEMENT GROUP
Dave Wilber, AGRONOMIST, SACRAMENTO, CALIF
Randy Zidik, CGCS, E.H. GRIFFITH INC.

ASSOCIATIONS



American Society of Golf Course Architects 221 N. LASALLE ST., CHICAGO 60601; 312-372-7090; WWW.GOLFDESIGN.ORG



Golf Course Superintendents Association of America 1421 RESEARCH PARK DR., LAWRENCE, KS 66049-3859; 800-472-7878; WWW.GCSAA.ORG

Independent Turf and Ornamental Distributors Association 25250 SEELEY ROAD, NOVI, MI 48375; 248-476-5457



National Golf Course Owners Association 1470 BEN SAWYER BLVD., STE. 18, MOUNT PLEASANT, SC 29464; 843-881-9956; WWW.NGCOA.ORG



National Golf Foundation 1150 SOUTH U.S. HIGHWAY ONE, SUITE 401, JUPITER, FL 33477



Responsible Industry for a Sound Environment 1156 15TH ST. NW, SUITE 400, WASHINGTON, DC; 202-872-3860; WWW.PESTFACTS.ORG

United States Golf Association P.O. BOX 708, FAR HILLS, NJ 07931; 908-234-2300; WWW.USGA.ORG

The DGM System

Bringing Syringing into the 21st Century

NEW — Hose handling concept designed for easy, economical syringing of greens.

A Direct Underground Maintenance Retractable Hose Reel System (DGM System™) is installed permanently at each green with a 75 foot, 3/4" I.D. water hose (typical). The system is easily accessed when needed and just as quickly stored out of sight.

- High Density Poly Ethylene (HDPE) enclosure with removable cover and hose spout with locking cover.
- Unit is supplied with stainless steel support rails.
- Easy hose change feature



DGM Systems

2842 E. Business 30, P.O. Box 248
Columbia City, IN 46725-0248
U.S.A Phone: (800) 444-3134
Fax: (800) 444-4587
www.reelcraft.com
email: reelcraft@reelcraft.com



patent pending

CIRCLE NO. 104

New!

Funny Business

Golfdom's Joke of the Month

Turn to

Golfdom Classifieds

every month for great deals and one of our favorite jokes!



POWERFUL²

Dual systemic fungicide works as a curative and a preventative.

RELENTLESS²

Starts working immediately and lasts up to 30 or more days.

CONTROL²

Controls over 30 fungi including dollar spot.

SysStar fungicide works twice as hard, on more sites, with more modes of action than any other fungicide on the market. **Dual Systemic** action is the key. This powerful systemic action works

from inside the plant to protect it from root tips to plant tops. Don't waste another season with a single action fungicide. Get the powerful dual systemic action of SysStar

– and get it on the double... ()².

SYS  **STAR**

The *dual systemic* fungicide for turf, landscape and ornamentals. 1-800-621-5208.

Circle No 117

Going Postal

■ WE'VE GOT MAIL

Grumpy Old Man?

Since when is *Golfdom* columnist Joel Jackson the conscience of the industry? In February, he told me that I'm not allowed to have a good time at the national. In March, he advocated that superintendents rat out one another if someone has a less than perfect environmental record. What's next month's topic — abortion?

Jackson needs to start talking to some real superintendents. People such as myself are the heart of this industry, and we've had it with all the politically correct banter.

Let's get back to the basics of our industry, and that's growing grass. Put the old man out to pasture.

**Mitchell E. Trent, Superintendent
Waynesborough CC, Paoli, Pa.**

Jackson responds:

If I sounded holier than thou, maybe it comes from preaching to the choir and still hearing some of the tenors singing off key. I've been trying to take the sermon to Capitol Hill. If only the lawmakers would go back to basics and use common sense, we wouldn't have to worry about being politically realistic — if not correct.

Movin' On

I'm writing in response to your recent article, "Getting Over Getting Fired" (February). My husband of 25 years has been a superintendent for 22 years. A year ago, he was in the exact situation of the superintendents in the article. He has been at several prestigious courses, hosted several major tournaments and has given his heart and soul to his career. As the article stated: "So you were doing a great job at your golf course, but you were fired because of politics. Join the crowd." These statements cover it all.

To this day, we can still not tell friends or colleagues why my husband is not at his previous job. For-

tunately, he obtained a wonderful new position at a caring club, but we had four months of depression, rejections and the worst upheaval of our lives. [After reading your article], I feel as if someone truly understands what we as a family — and my husband as a superintendent — have gone through and thankfully survived, although we have not walked away totally unbruised. In fact, it will take many years to completely recover.

Thank you for taking the time to research such an important issue for superintendents.

**Janet Kuhns
Somerville, N.J.**

Won't Forget Walter

Thank you for your excellent editorial on our mutual friend, Walter Mattison ("A Farewell, Not A Goodbye," February). Your description of Walter was on the mark. I had met him earlier in Hawaii, but was pleased when he was hired at WidgiCreek GC.

He was great to have on board as we shared a love of the game, creating the golf course and working with the land in general. I didn't worry about leaving the project when Mattison was there to look after my newest baby.

I was also pleased to read Larry Aylward's report regarding how Mattison was treated at Widgi ("Anger and Outrage is All for Naught," February). Aylward's article helped me better understand what went on.

**Robert Muir Graves, Architect
Graves & Pascuzzo Ltd., Bend, Ore.
(Graves designed WidgiCreek GC)**

Feel like going postal? We want to hear from you. You can e-mail your letters to Frank Andorka at fandorka@advanstar.com, fax to 440-891-2675 or send them via snail-mail to: 7500 Old Oak Blvd., Cleveland, OH 44130. Make sure to include your name and phone number. Letters may be edited.

Golfdom

www.golfdom.com

BUSINESS STAFF

John D. Payne GROUP PUBLISHER 440-891-2786 jpayne@advanstar.com
Nicole Caprara ADMIN. COORDINATOR 440-891-2734 ncaprara@advanstar.com
Jill Hood PRODUCTION MANAGER 218-723-9129 jhood@advanstar.com
Rosy Bradley PRODUCTION DIRECTOR 218-723-9720 rbradley@advanstar.com
Darryl Arquette CIRCULATION MANAGER 218-723-9422 darquitte@advanstar.com

ADVERTISING STAFF

CLEVELAND HEADQUARTERS

7500 OLD OAK BLVD.
CLEVELAND, OH 44130-3609

Heather Fox EASTERN MANAGER hfox@advanstar.com
440-891-3168 FAX: 440-891-2675

Kevin Stoltman MIDWEST MANAGER kstoltman@advanstar.com
440-891-2772 FAX: 440-891-2675

Michael Harris DISPLAY, ACCOUNT EXECUTIVE mharris@advanstar.com
440-891-3118 FAX: 440-826-2865

Leslie Zola CLASSIFIED, ACCOUNT EXECUTIVE lzola@advanstar.com
800-225-4569 X2670 FAX: 440-826-2865

REGIONAL OFFICES

Tom Galligan GROUP SALES DIRECTOR tgalligan@advanstar.com
3901 52ND AVE.
KENOSHA, WI 53144-1830
262-653-9523 FAX: 262-653-9524

Gretchen Wagner WESTERN MANAGER gwagner@advanstar.com
74-563 PEPPER TREE DR.
PALM DESERT, CA 92260
760-837-3734 FAX: 760-837-3785

MARKETING SERVICES

Marcie Nagy REPRINTS (500 MINIMUM) 440-891-2744 mnagy@advanstar.com

Tamara Phillips CIRC. LIST RENTAL 800-225-4569, EXT. 2773 tphillips@advanstar.com

Subscriber, Customer Service 218-723-9477; 888-527-7008

Books, Directories, Current Issues, Back Issues, Photocopies, Microfiche, Film Copies, CD-Rom 800-598-6008; 218-723-9180



CORPORATE

Robert L. Krakoff CHAIRMAN AND CEO

James M. Alic VICE CHAIRMAN

David W. Montgomery VP/FINANCE, CFO AND SECRETARY

William J. Cooke EXECUTIVE VICE PRESIDENT

Alexander S. DeBarr EXECUTIVE VICE PRESIDENT

Daniel M. Phillips EXECUTIVE VICE PRESIDENT

Eric I. Lisman VICE PRESIDENT & GENERAL COUNSEL

Adele D. Hartwick VICE PRESIDENT-TREASURER & CONTROLLER





THE BEST GREENS AREN'T BUILT.
THEY'RE MAINTAINED.



No machine maintains greens better than the John Deere 2500 Tri-Plex Greens Mower. After years of extensive testing feedback from literally thousands of superintendents worldwide, the 2500 has been engineered to give an exceptional quality of cut, the utmost in operator comfort, and the highest level of serviceability.



Cut is king on the 2500. The cutting unit suspension carries the weight of the lift arms and grass catchers on the traction unit instead of the cutting unit. The 2500 also has the lowest psi of any tri-plex greens mower. And all controls are conveniently located at the operator's fingertips. For a better look at the 2500, call your local John Deere distributor or 1-800-537-8233.

Circle No. 106



WWW.JOHNDEERE.COM

NOTHING RUNS LIKE A DEERE®



JOHN DEERE

Events

SEMINARS & CONFERENCES

MAY

12-16 American Society of Golf Course Architects Annual Meeting

Columbus, Ohio
Contact 312-372-7090

14 Cactus and Pine GCSA's Karsten Field Day and Seminar

Tucson, Ariz. Contact 480-609-6778

16 North Carolina State University Field Day

Raleigh, N.C.
Contact 800-476-4272

22 Management of Localized Spots and Water Repellent Soils

Houston
Contact 800-833-4451

22 Managing Turfgrass Root Systems

Houston
Contact 800-833-4451

JUNE

11 Iowa GCSA's State Meeting

Ames, Iowa
Contact 319-286-5596

JULY

12 Managing Turfgrass Environment

Scottsdale, Ariz.
Contact 480-609-6778

18-22 Turfgrass Producers International Conference and Expo

Toronto
Contact 800-405-8873

AUGUST

2 Iowa State University Field Day

Ames, Iowa
Contact 319-286-5596

16 Michigan Golf Course Owners Association 8th Annual Golf Outing and Field Day

Augusta, Mich.
Contact 517-482-4312

21 Cornell University Field Day

Ithaca, N.Y.
Contact 607-255-1792

SEPTEMBER

10 Iowa Turfgrass Institute

Burlington, Iowa
Contact 319-286-5596

OCTOBER

8 Iowa GCSA State Meeting

Panora, Iowa
Contact 319-286-5596

NOVEMBER

1 Golf Course Managers Association of Cape Cod's Annual Meeting

Sandwich, Mass.
Contact 508-693-0578

3-7 Georgia GCSA's Annual Meeting

St. Simons Island, Ga.
Contact 706-742-2651

**NOW
AVAILABLE**

F I V E
GREAT REASONS WHY
YOU SHOULD CONSIDER
BULL'S EYE Bermuda
FOR YOUR NEXT
PROJECT.

- Virtually No Seedheads
- Good Shade Tolerance
- Deep Blue-Green Color
- Medium-Wide Blade For Texture Contrast
- Can Be Mowed With Rotary or Reel



BULL'S-EYE
Bermuda

WEST COAST
TURF

Life is Short. Sod It!

www.westcoastturf.com 760/360-5464 800/447-1840 FAX: 760/360-5616

Let us know about your events. Send information to Frank Andorka at 7500 Old Oak Blvd., Cleveland, 44130. Fax information to 440-891-2675 or e-mail to fandorka@advanstar.com.

Tools of the Trade



MAXIMUM PROTECTION FROM STRESS WITH AMINO ACID BIOFERTILIZERS



Use MACRO-SORB® *radicular* throughout the growing season to increase nutrient absorption and enhance root growth and development.



Use MACRO-SORB® *foliar* to increase photosynthetic activity, especially during periods of stress, and throughout the year to enhance your foliar spray program.



Use QUELANT®-Ca to correct a calcium deficiency within the plant or once a month to keep calcium levels sufficient throughout the year.



Use QUELANT®-K to enhance synthesis of carbohydrates and increase turfgrass tolerance to heat, drought, cold, traffic, disease, and other adverse conditions.

Call 800-925-5187 for your nearest distributor
www.nutramaxlabs.com

Circle No 105



Aurora
Central Control
System Software



Aurora
Stand-Alone
Controllers



Aurora
Network
Satellites



Thompson
Heavy-Duty
Rotors



Thompson
Solid-Brass
Valves



Signature
Management
Consultation

We've got the software,
the hardware,
the controllers,
the satellites,
the rotors,
the valves,
and the *only* two-way
communication system
that doesn't require a PC.



Free controller/remote trial offer!

To get you started on the right course, order an Aurora™ stand-alone controller and remote control by May 31, 2001. If you don't see a difference within 90 days of your order, simply return the unit and we'll cancel your order (less shipping and handling fee). Call now to see how easy and affordable upgrading your current system can be. Our help desk is available 7 a.m. to 7 p.m. PST, Monday thru Friday.

(left: Paul Latshaw and Paul Ramina with their Aurora Controller on the 8th hole of the Riviera Country Club.)