

# Coming events

## MARCH

- 5-10**—PGA business school I, Syracuse.  
**6**—National Restaurant Association seminar, controlling labor costs, Holiday Inn O'Hare Kennedy, Rosemont, Ill.  
**6-8**—Canadian Golf Superintendents Association, 29th annual Canadian Turfgrass Show, Hotel Toronto, Toronto.  
**9-11**—Sierra Nevada Golf Course Superintendent Association & Nevada Recreation and Park Society, seminar, John Ascuaga's Nugget, Sparks Convention Center, Reno, Nev.  
**13**—NRA seminar, controlling labor costs, New England Center for Continuing Education, Durham, N.H.  
**13-15**—Midwest Regional Turf Foundation, turf conference, Purdue University, West Lafayette, Ind.  
**13-16**—PGA workshop, teaching & playing, Phoenix.  
**13-17**—PGA seminar for private facility pros, Westchester, N.Y.  
**19-22**—PGA workshop, USGA rules & tournament management, Boston.  
**20**—NRA seminar, controlling labor costs, Marriott, Bloomington, Minn.  
**20**—USGA Green Section, western regional conference on golf course management, Washington Athletic Club, Seattle.  
**21**—USGA Green Section, western regional conference on golf course management, Sheraton Universal Hotel, Universal City, Calif.  
**21**—USGA Green Section, mid-continent regional conference on golf course management, Detroit (Mich.) Golf Club.  
**21**—Northcentral Pennsylvania Turf School, Holiday Inn, Bradford.  
**27-Apr. 1**—PGA business school II, Cypress Creek, Fla.  
**28-30**—The Irrigation Association, turf short courses, Management Education Center, Troy, Mich.

## APRIL

- 5**—USGA Green Section, northeastern regional turf conference, Marriott Motor Inn, Newton, Mass.  
**6**—USGA Green Section, mid-Atlantic regional turf conference, Northridge CC, Raleigh.  
**10**—New England Section PGA, annual spring merchandise show & dinner, Howard Johnson Motor Lodge, Boston.  
**12**—USGA Green Section, northeastern regional turf conference, Tarrytown (N.Y.) Hilton Inn.  
**13**—USGA Green Section, mid-Atlantic regional turf conference, Kingsmill GC, Williamsburg, Va.  
**17-19**—PGA tour school II, Houston.  
**30-May 3**—National Golf Foundation & Sporting Goods Industries spring meetings, Key Biscayne Hotel, Key Biscayne, Fla.

## MAY

- 21-24**—National Restaurant Association, restaurant hotel/motel show, McCormick Place, Chicago.

## JUNE

- 25-29**—American Seed Trade Association, annual convention, Crown Center Hotel, Kansas City, Mo.

## JULY

- 19-21**—American Sod Producers Association, summer convention & field day, Sheraton Spokane, Spokane, Wash.

## SEPTEMBER

- 13-16**—World Fertilizer Conference, St. Francis Hotel, San Francisco.  
**23-26**—SGMA, Sporting Goods Manufacturers International Show, New York Coliseum, New York City.  
**28-30**—National Club Association, annual meeting, Capitol Hilton, Washington, D.C.



Pros will learn more about merchandising at the PGA seminar for private facility pros March 13-17 in Westchester, N.Y.

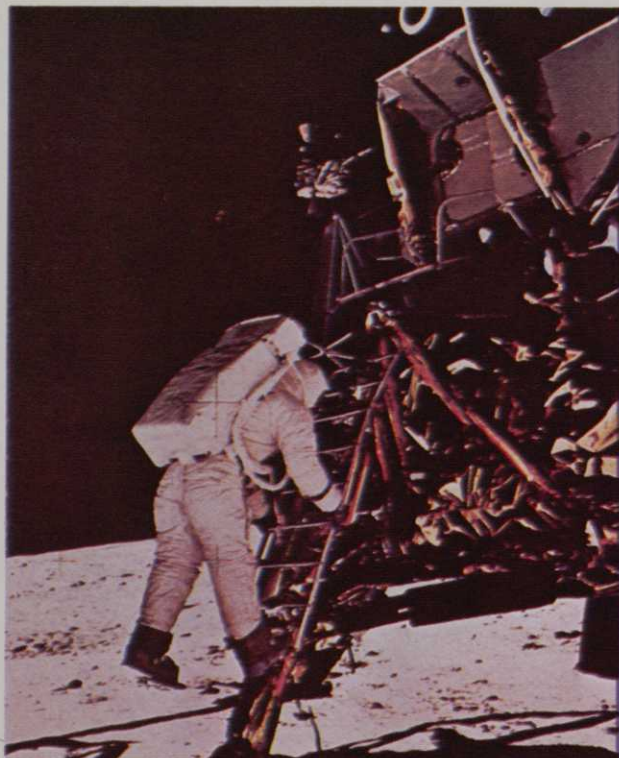
# WHAT DO WE ADD TO



NOTHING!

**THE SUPER NATURAL ORGANIC FERTILIZER**  
**Every nutrient known to be needed for growth**  
**is already there — naturally!**

The Sewerage Commission, 8500 S. 5th Ave., Oak Creek, Wis. 53154



MAN'S CONQUEST OF THE MOON  
WAS, WITHOUT DOUBT,  
A GREATER ACHIEVEMENT THAN  
THE DEVELOPMENT OF  
AN OUTSTANDING BLUEGRASS, BUT...

For Turf Professionals  
and Home Gardeners,

**Adelphi**  
KENTUCKY BLUEGRASS

(U.S. Plant Patent No. 3150)

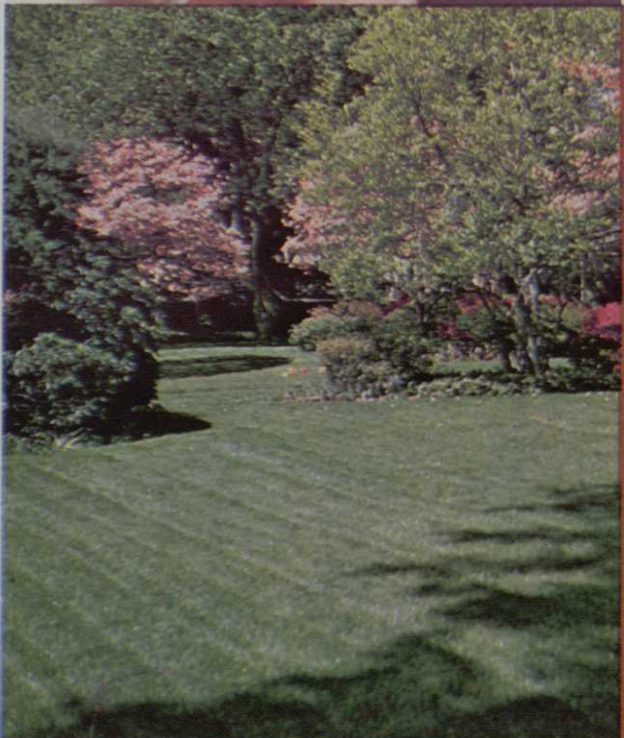
is, truly...a "GIANT STEP" IN TURF



**RATED OUTSTANDING FOR  
OVERALL PERFORMANCE...in actual use  
...BY PEOPLE WHO KNOW  
AND GROW GREAT GRASS.**

Put into proper perspective, many of man's achievements are "giant steps" ... none as dramatic as the conquest of the moon and space.

In the world of turf, "ADELPHI" Kentucky Bluegrass is the giant step of the decade. Its rich, darker green color, its excellent density, its good resistance to disease... have been bred right into it by man. Its acceptance has been virtually universal. "ADELPHI"... on golf courses, athletic fields and on beautiful lawns everywhere.



**ISN'T IT TIME YOU TOOK  
THE GIANT STEP IN TURF?  
...TO ADELPHI.**

FOR INFORMATION, CONTACT:

**J & L ADIKES, Inc.**

Jamaica, N.Y. 11423

**JONATHAN GREEN & SONS**

Farmingdale, N.J. 07727

**NORTHRUP KING CO.**

Minneapolis, Minn. 55413

**VAUGHAN-JACKLIN CORP.**

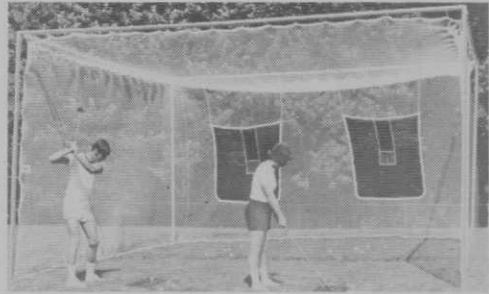
Bound Brook, N.J. 08805 • Downers Grove, Ill. 60515  
Spokane, Wa. 99213

Canadian Inquiries: National-NK Seeds Ltd., Box 485, Kitchener, Ont.

Rothwell Seeds Ltd., Box 511, Lindsay, Ont.

Other International Inquiries: Northrup King Co., Minneapolis, Minn. 55413

# Products



## Indoor/outdoor practice cage

Jayfro Corp.'s golf practice cage is made of heavy knotless nylon with a 4½-foot-square nylon baffle combination target and weighted bottom. It's available in two sizes (for one or two golfers), with or without a 2-inch-diameter aluminum frame.

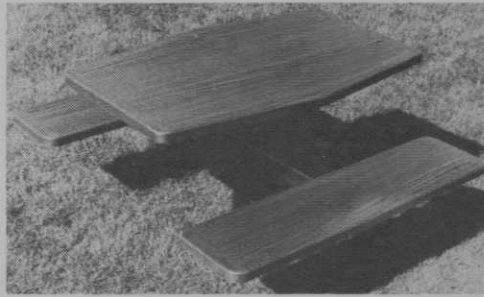
Circle 202 on free information card

## Keep trespassers out

Close off private drives with the Cableguard. It comes complete with cable, an auger bit, tree paint, a padlock, four keys, and complete installation instructions. Simple hand tools ad-

just the cable length between two trees or posts. From Cableguard Systems, Inc.

Circle 206 in free information card



## Outdoor tables

Embassy outdoor furniture offers a contemporary appearance combined with easy installation (just a single leg to sink in the ground), simple maintenance, and sturdy steel construction. A wide range of colors is available. The manufacturer: Syspended Seating Inc.

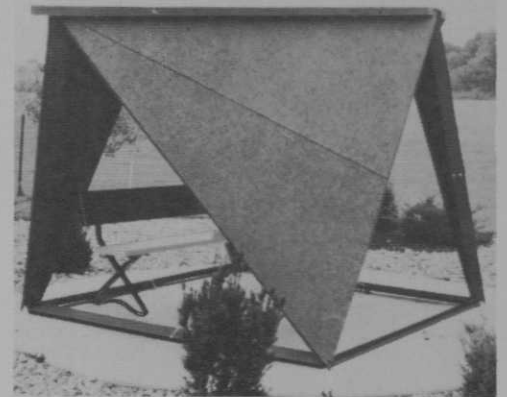
Circle 205 on free information card

## Rear-engine tractors

Gravely's new 8000 series commercial grounds maintenance tractors feature a rear-mounted engine bolted directly to an all-gear, eight-speed transmission. The center power

takeoff with optional front and rear PTO's provides direct all-gear drive to more than 20 attachments for fine or rough mowing, plowing, light grading, and other tasks. Engine choices range from 12 to 16½ horsepower.

Circle 210 on free information card



## All-wood shelter

Standard Golf Co.'s new Shelterport provides excellent shelter for 8 to 10 golfers, holds two benches, and looks good on the golf course, too. It uses metal joint connectors with 2 by 4's in a triangular frame design, covered with wood side panels. The wood base members provide the form for pouring the concrete slab. Lightning rods are available at extra cost.

Circle 208 on free information card

# Advertisers index

AMF Harley-Davidson .....	21
Adelphi .....	32
Bunton Co. ....	4
ESB Brands, Inc. ....	8
Eastern Golf Co. ....	6
Far West Golf Co. ....	33
Holsclaw Bros., Inc. ....	23
International Seeds, Inc. ....	25
Jacobsen Manufacturing .....	30
Lester Electrical of Nebraska, Inc. ....	4
Lewisystems .....	26
Manhattan Ryegrass Growers Association .....	cover 2
Milwaukee Sewerage Commission .....	31
Northrup King Co. ....	11
Oregon Fine Fescue Commission .....	16
Paulson Supply Co. ....	13
Ryan/OMC Lincoln .....	22
T-Golf, Inc. ....	23
Tee-2-Green Corp. ....	Cover 4
Teutonix, Inc. ....	6
Trojan Battery Co. ....	cover 3
Uni-Builders .....	34
Velsicol Chemical Co. ....	17
Yamaha Motor Corp., U.S.A. ....	18, 19

## golfbusiness

### ADVERTISING SALES OFFICES

**HEADQUARTERS:** 9800 Detroit Ave., Cleveland, OH 44102 (phone 216/651-5500)  
**RICHARD J. W. FOSTER**  
 General manager

**NEW YORK:** 757 Third Ave., New York, NY 10017 (phone 212/421-1350)  
**STEPHEN STONE**  
 Eastern manager

**CHICAGO:** 333 North Michigan Ave., Room 808 Chicago, IL 60611 (phone 312/236-9425)  
**JOE GUARISE**  
 Midwestern manager

**ATLANTA:** 3186 Frontenack Court, NE, Atlanta, GA 30319 (phone 404/252-4311)  
**RICHARD GORE**  
 Southern manager

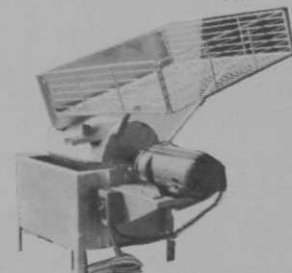
**LOS ANGELES:** 5455 Wilshire Blvd., Suite 1107 Los Angeles, CA 90036 (phone 213/933-8408)  
**JOHN SANDFORD**  
 Western manager

**SAN FRANCISCO:** 582 Market St., Suite 1904, San Francisco, CA 94104 (phone 415/982-0110)  
**ROBERT A. MIEROW**  
 Western manager

IF YOU HAVE A  
**DRIVING RANGE**  
 YOU SHOULD BE TALKING TO US



FOR:



DISPENSERS  
 PICKERS  
 PICKER DRIVE UNIT  
 BALL WASHERS  
 RANGE BALLS  
 BALL PAILS  
 KLEET KLEENERS  
 TEES, PENCILS  
 AND MORE

### TIRED OF PRICE INCREASES?

WE HAVE LOWERED OUR 1978 PRICES. YOU NOW BUY DIRECT FROM THE MANUFACTURER. THIS ELIMINATES THE MIDDLEMAN COSTS ALLOWING YOU SAVE UP TO 30%.

WRITE OR CALL FOR OUR CATALOG

**FARWEST GOLF INC.**  
 1234 INDUSTRIAL AVENUE  
 ESCONDIDO, CALIF. 92025  
 (714) 743-4881

THE LARGEST MFG. OF RANGE EQUIP. IN THE WEST

Circle 119 on free information card

When answering ads where box number only is given, please address as follows: Box number, % Golf Business, Dorothy Lowe, Box 6951, Cleveland, Ohio 44101.

Rates: All classifications 65¢ per word. Box numbers add \$1 for mailing. All classified ads must be received by the Publisher before the 10th of the month preceding publication and be accompanied by cash or money order covering full payment.

Mail ad copy to Dorothy Lowe, Golf Business, Box 6951, Cleveland, Ohio 44101.

**WANT TO PLACE A CLASSIFIED AD IN GOLF BUSINESS?**

Write:

Dorothy Lowe  
GOLF BUSINESS  
BOX 6951  
Cleveland, OH 44101

**HELP WANTED**

**CLUB GENERAL MANAGER**

Jack Nicklaus Golf Center at Kings Island  
Cincinnati, Ohio Area

Experienced in all phases club management: Administration, Inventory Control, Food/Beverage, Accounting. Golf course maintenance experience not a factor. Need experience selling memberships. Converting from public to private. Must be able to communicate with members and employees. Position available immediately. Salary open.

Write or call **BURCH RIBER**  
3565 Kings Mills Road  
Mason, Ohio 45040  
(513) 381-4904

**PROFESSIONAL:** Vermont resort golf course; pro shop, lessons. P.O. Box O, Ludlow, Vermont 05149.

**GREENSKEEPER-MANAGER** for par 30 lighted golf course. Driving range and miniature course. Established and successful mid-west operation with excellent pro-shop sales. Salary and commission. Box 154, Golf Business, Box 6951, Cleveland, Ohio 44101.

**POSITION WANTED**

**PRO-MANAGER.** Presently employed. Want relocation in Carolinas or Georgia. Married,

responsible, dependable, thoroughly knowledgeable in every phase of club operations. Box 158, Golf Business, Box 6951, Cleveland, Ohio 44101.

**GOLF PROFESSIONAL** is available 1978. PGA member 25 years, married, experienced, also manager, greenskeeper. Box 84, Golf Business, Box 6951, Cleveland, Ohio 44101.

**PRO-MANAGER** responsible and dependable with character and financial references. Box 149, Golf Business, Box 6951, Cleveland, Ohio 44101.

**FOR SALE**

**SEMI-PRIVATE GOLF COURSE.** Five years old, overlooking beautiful Lake Assawompset in southeastern Massachusetts. Clubhouse with full liquor license, maintenance building, automatic irrigation system, all late model equipment. W. L. Byrne, Inc., 617 947-0724.

**26 HARLEY DAVIDSON** golf carts for sale. 1969-1974, new paint, new seats. \$600 each or all at \$14,000. 614 363-6631.

**FOR SALE:** Beautiful 18 hole public golf course, 1½ mile from city limits, well established and rolling. Includes all equipment and buildings, also beautiful home on premises. \$1,000,000.00. Woodlawn Golf Course, 4634 Treat Hwy., Adrian, Michigan 49221.

**FOR SALE:** 1978 Aquamater 24 volt electric drinking water cooler that can be installed on 115 V AC power including irrigation control circuits. Write or call for more information. Aquamaster, 591 Northeast Fifth Street, Pompano Beach, Florida 33060. Phone: 305 942-8076.

**GOLF COURSE PROPERTY** zoned for 207 units of cluster homes (2 story), 264 Garden Home units (2 story), Midrise homes 216 units (6 story), and 138 single units (family) for sale near Tampa, Florida. Inquire of: G. R. Greenwell, 407 Beverly Blvd., Brandon, Florida 33511. Telephone: 813 681-4634.

**LEGAL NOTICES**

**ADVERTISEMENT FOR LEASING PROPOSALS** Involving the design, construction, operation and maintenance of a regulation 18-hole golf course at the Hudson Mills metropark, Washtenaw County, Michigan. Proposals will be received by the Huron-Clinton Metropolitan Authority, 3050 Penobscot Building, Detroit, Michigan 48226 until 2:00 p.m. (Local Time), Thursday, April

27, 1978, from Proposers able to show a reasonable acquaintance with and an ability to successfully execute the requirement herein described. This project involves the leasing of lands within Hudson Mills Metropark for purposes of designing, constructing, operating and maintaining a Regulation 18-hole Golf Course. Proposal Forms, Location Plans, Soil Survey and Topographical Information may be obtained at the above address on or after January 25, 1978. Each proposal shall be accompanied by a Certified Check or Bid Bond by a recognized Surety Company in the amount of five (5%) percent of the estimated cost of constructing the improvements as a guarantee that the successful proposer will enter into a Lease Agreement. After the time of opening, no proposal may be withdrawn for a period of one hundred eighty (180) days. The Authority reserves the right to reject any or all proposals, to waive irregularities and/or formalities and to make award in any manner deemed for the best interest of the Authority. Huron-Clinton Metropolitan Authority, Robert L. Bryan, Secretary.

**WANTED TO BUY**

**IF YOU OWN A GOLF COURSE** and want to sell it for less than \$500,000.00 please contact me through Box 157, Golf Business, Box 6951, Cleveland, Ohio 44101.

**BUSINESS OPPORTUNITIES**

**GOLF COURSES:** Want to buy or sell a golf course? Our business is exclusively golf courses transactions. We also do golf course market value appraisals. McKay Realty — GOLF AND COUNTRY CLUB PROPERTIES. 15553 N. East St. (U.S. 27), Lansing, Mich. 48906.

**OREGON** 18 hole course, year round play, pro shop, bar, recreation room, lounge, club storage, restaurant, maintenance equipment, 150,000 population, gross \$225,000.00 annually, price: \$770,000.00 terms. Hillsboro Realty, Inc., 136 East Main Street, Hillsboro, Oregon 97123. AC 503 648-7112.

**FLORIDA — Regulation 18 hole — par 72 — public fee course**, including full service clubhouse, all equipment, pool, 8 lighted tennis courts, access from I-95. Can add contiguous high occupancy 60 unit apartment complex and two development parcels totaling approximately 72 acres. For information write Robert J. Fewell Co., 2300 Ponce De Leon Blvd., Coral Gables, Florida 33134.

**18 HOLE GOLF COURSE**, par 72, 180 acres, additional land available. Geneva Enterprises, Inc., R3, Clinton, Indiana 47842. Telephone 317 832-8384.

**MISCELLANEOUS**

**GOLF CAR TIRES** First line 18 x 8.50-8, \$15.25; 18 x 9.50-8, \$15.75 plus F.E.T. Send for our line. Golden Triangle Sports, Inc., 6317 Library Road, Library, Pa. 15129. Phone 412 835-6898.

**ARE YOU LOSING MONEY** in your bar, restaurant or pro shop, is your income limited, overhead and payroll too high? We can help. 18 years of experienced, reasonable rates. Write Golf Business Consultants, Box 532, St. Therese, Quebec.

**GOLF CART FLOOR MATS.** New nylon reinforced rubber mats for Harley carts. \$14.75 per set. C.O.D. or send payment to Rice Dice Cutting Co., 8831-33 Ave., Kenosha, Wisc. 53142.

From  
this



Price  
**\$77.00**

To  
this



**NEW — SHELTER HOUSE** — or storage bldg. frame 8' x 8' x 88"  
Solid construction of 2" x 4" lumber that comes pre-cut and pre-numbered in a kit with easy to read instructions, drawings and shingling information. Any local lumber yard can supply the necessary 4' x 8' panels for roof and wall covering.

Can be put together in half-a-day with ordinary hand tools. Door drawings are included for use as a storage bldg.

F.O.B. Newbury, Ohio  
Approx. weight 115 lbs.

**UNI-BUILDERS INC.**  
10357 Kinsman Road, Newbury, Ohio 44065 • (216) 338-3258



# Change for the Best!

## OUR BEST DESIGN CHANGES EVER...INTRODUCE THIS NEW GENERATION OF TROJAN® "MILEAGE MASTER" BATTERIES

- ★ One piece solid covers assure easier, more efficient cleaning.
- ★ Concealed mini-length cell connectors with less resistance increase performance.
- ★ Filler caps spaced closer to center give minimum interference with terminal connecting cables.
- ★ Trojan Batteries powered the first electric golf car 30 years ago — only by improved performance can we stay in first place.
- ★ We're designating this new generation by types taken from their discharge ratings in minutes at a 75 AMP rate.

### HERE THEY ARE . . .

GROUP NUMBER	TYPE	VOLTS	75 AMPS TO 5.25 VOLTS AT 80° F MINUTES	OVERALL DIMENSIONS			
				LENGTH	WIDTH	*HEIGHT	WEIGHT
GC-2	<b>T-90</b>	6	<b>90</b>	10 <sup>3</sup> / <sub>8</sub>	7 <sup>1</sup> / <sub>16</sub>	10 <sup>1</sup> / <sub>4</sub>	58
GC-2H	<b>T-105</b>	6	<b>105</b>	10 <sup>3</sup> / <sub>8</sub>	7 <sup>1</sup> / <sub>16</sub>	11 <sup>1</sup> / <sub>2</sub>	67
GC-2H	<b>T-135</b>	6	<b>135</b>	10 <sup>5</sup> / <sub>16</sub>	7 <sup>1</sup> / <sub>8</sub>	11 <sup>3</sup> / <sub>8</sub>	73

OTHER SPECIAL BATTERIES AVAILABLE FOR ELECTRIC VEHICLES.

\* TYPE OR TERMINAL WILL VARY HEIGHT SLIGHTLY

For further information call toll free 800-423-6569, in Calif. 213-945-1471

TROJAN BATTERY COMPANY • 9440 ANN STREET • SANTA FE SPRINGS, CALIFORNIA 90670