

Certified

# MANHATTAN

Perennial Ryegrass



School grounds in St. Paul, Oregon gets plenty of traffic but still looks great.

Manhattan fairways at Elkhorn Valley Golf Course, Mehama, Oregon. Imparts beauty and wear tolerance to this mountain course.

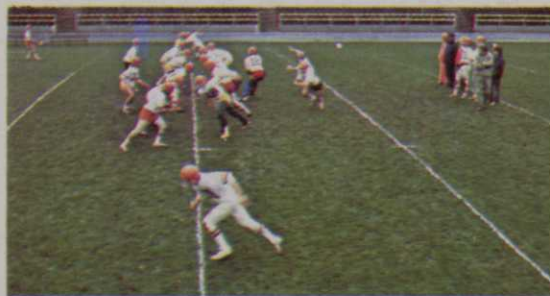
Manhattan Perennial Ryegrass has those desirable characteristics long sought in a turf grass. Consider these data facts in your turf program:

- Superior fast establishment.
- Long term performance.
- Depth of crown assures better recovery from turf damage, greater wear tolerance, holds better under short mowing.
- Good density . . . more competitive with unwanted weeds and grasses.
- Less thatch development.
- Maintains vegetative tillers.
- Performs better in fall, later in spring and summer.
- Resistant to brown patch.
- Dark green color.
- Deep rooted, requires less water.
- Fine leafed.

Manhattan fine leaf perennial ryegrass is the versatile grass. Excellent for golf tees and fairways, parks and athletic fields, home lawns. Developed at Rutgers University, New Brunswick, New Jersey, grown in Oregon under rigid certification and quality control.



Home lawn near Woodburn, Oregon after three years in 100% Manhattan.



Sprague football stadium, Salem, Oregon holds up well even in the soaking rains of Oregon's fall months.

For more information write:

**Manhattan Ryegrass  
Growers Association**

1349 Capital N.E.  
Salem, OR 97303

Distributed by:

**Whitney Dickinson Seeds, Inc.**

52 Leslie Street  
Buffalo, N.Y. 14240



"TURFTYPE"  
PERENNIAL RYEGRASS

## "The Versatile Grass for Professional Use"