

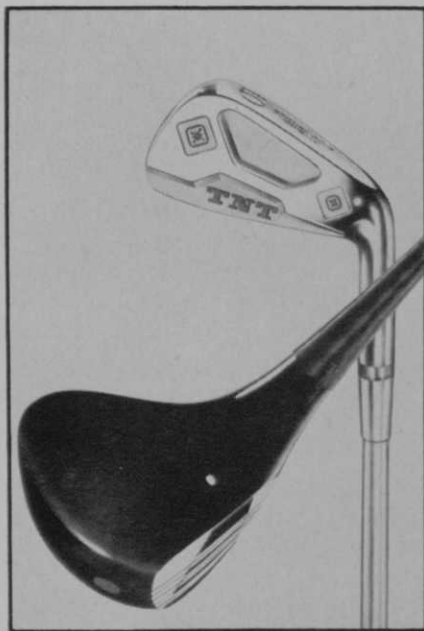
JACOBSEN MFG. COMPANY introduces the Model F-9 top dresser, which features 13.5 cubic foot hopper capacity and a rotating brush for deep distribution of top dressing. Mounted on the Model 12 truck, the unit can dress a 36-inch wide swath at speeds of up to four mph.

Circle No. 117 on reader service card



NORTHWESTERN GOLF COMPANY announces TNT model woods and irons with toe and heel weighting that is individually added at heel and toe with specially designed brass plugs. Heads are precision faced with laminated maple and the finish is ebony black. TNT irons are produced in 18-8 austenitic steel by the lost wax process. Precise relieving in the center of clubhead provides correct weight distribution and maintains strength. TNT model clubs are available with graphite, Microlite 400 stainless steel, lightweight chrome steel and dynamic steel shafts.

Circle No. 118 on reader service card



# NCA TO BEEF UP AIDS TO CLUBS

Members, as well as the industry as a whole, can expect more direct action this year from the association

by **KEN EMERSON**

EXECUTIVE DIRECTOR, NATIONAL CLUB ASSN., WASHINGTON, D.C.

The National Club Assn. expanded its legislative, legal and tax service to the private club industry and elected new officers and directors at its 12th annual meeting in Honolulu, Hawaii, February 11-13.

In expanding service, the association will increase the frequency of its information services, which totaled more than 30 publications last year, add more contacts in Congress and in government agencies to its present resources and begin a new effort to aid clubs at the state level, particularly in the area of taxation. The first product of this level of activity will be NCA's 50 State Property Tax Analysis.

The association also established a precedent when it re-elected Cyril F. Brickfield to a third term as president. Brickfield, an attorney in Washington, D.C., was twice president of the Bethesda CC, is a former president of the Federal Bar Assn., is currently legislative counsel for the National Retired Teacher's Assn. and the American Assn. of Retired Persons and is a trustee of the Suburban Hospital in metropolitan Washington.

Brickfield has been closely associated with the legislative process in Washington for nearly 20 years, having served as counsel to the House Judiciary Committee for 10 years and then as Deputy Administrator of the Veterans Administration prior to his return to private practice.

Elected as vice presidents of NCA were Joseph J. Donoghue, general

manager of Losantiville CC, and Milton E. Meyer Jr., secretary of Pinehurst CC.

Secretary of the association will be Judge James J. Clyness Jr., president of the Country Club of Ithaca, N.Y.; treasurer is Louis L. Szep, general manager of the Oklahoma City G & CC.

The following are newly elected directors for a term of three years: Frank G. Hathaway, past president of NCA, secretary-treasurer of NCA, president of the Los Angeles Athletic Club; Herbert L. Emanuelson Jr., a Yale graduate and practicing attorney in New Haven, Conn.; E. Guenter Skole, general manager of the Cosmos Club, Washington, D.C., and a former director of the Club Managers Assn. of America; Louis L. Szep; Don A. Rossi, executive director of the National Golf Foundation, from Rolling Green CC, Arlington, Ill.; James E. McLoughlin, executive director Metropolitan Golf Assn. and a member of Whippoorwill Club, Armonk, N.Y.; Morris A. Cox, past president of the California GC, San Francisco, president of the Peninsula Hospital and the Rotary Club. Newly-elected directors for a one-year term are: Sam Dunham, former director NCA, from Salt Lake City, manager of the Ambassador Athletic Club and Houston White, attorney from Los Angeles, vice president of the Bank of California, past president and a director of the University Club of Los Angeles. □



FOR  
GREENS AND TEES

**PENNCROSS BENT  
AND  
TORONTO C-15 BENT  
SOD or STOLONS  
ALSO  
FYLKING & WINDSOR**

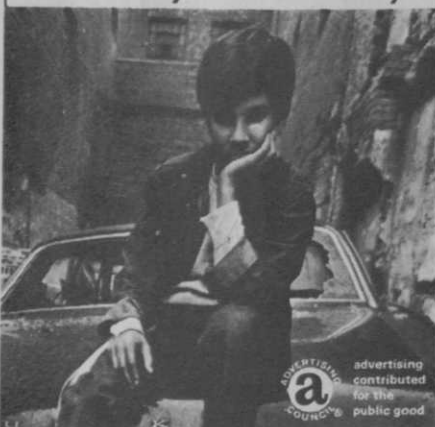
Quality Growers for 22 years



4301 WEST FLOSSMOOR ROAD  
TINLEY PARK, ILLINOIS 60477  
312-798-2210

For more information circle number 179 on card

**What he needs,  
money can't buy.**



ADVERTISING  
a contributed  
for the public good

There are boys who need fathers. Guys in veterans' hospitals who need someone to visit them. Old people who need someone to talk to. Kids who need tutors.

We know lots of people and groups who need your help. Write "Volunteer," Washington, D.C. 20013.

**We need you.**   
The National Center for  
Voluntary Action.

**GRAU** from page 14

a concern, too. Do you know of any way that the dust can be reduced short of eliminating liming? (Pennsylvania)

A—Superintendents who have hydraulic applicators (hydro-mulchers, hydro-seeders, hydro-grassers) have the problem licked, especially for putting greens and tees. In water suspension there is no dust. For 50 to 70 acres of fairways hydraulic spreading is a bit impractical and this is the area where dust is a big problem.

Very recently, I have received a sample of finely-pulverized limestone that has been pelletized into firm granules. This product is virtually dust free and can be spread with conventional gravity feed spreaders or with spinner type spreaders. The granules can be crushed with firm pressure from one's fingers. Dropped into water, the pellets quickly disperse and spread out in the familiar appearance of finely pulverized limestone.

One advantage of granules is that they roll off blades of grass. When moisture is supplied (rain or irrigation), they dissolve (they really disintegrate) and settle down to the job that lime is designed to do—without dust. You can expect the cost to be somewhat higher than conventional limestone.

In naming the company that designed and manufactures this pelletized lime (known as Granulime), I assume no responsibility for the product. I would prefer that Paul Perrine, president, answer the inquiries, rather than I. The company is Calcium Products Corp., P.O. Box 270, Aurora, Ind. 47001. The mine and plant are near Irvington, Ky.

No information has been given to me about Ca and Mg contents nor about the fineness (screen test) of the limestone prior to the granulating process.

This question and answer has been prepared to acquaint GOLF-DOM's readers with another step in progress toward refined management of turfgrass areas. It implies no recommendation for use or endorsement of the product. Those readers who are interested are asked to correspond directly with Paul Perrine.

JET FUEL DAMAGE

Q—Everyday there are 20 to 25 big jets that fly over my golf course in their landing pattern. I can see fuel being dumped as they approach the runway. The greens that lay beneath this approach pattern give me more trouble than all the others. Is there a connection? (Maryland)

A—There is a first time for everything and this is the first I've heard of possible trouble from dumped jet fuel. I don't know the answer, but I'll work with you to find the answer. I wonder if other clubs near big airports have had any similar experiences?

NATURE'S BOUNTY

Q—We have many, many plants of pokeweed (*Phytolacca americana*) springing up all around our golf course, especially where the soil has been disturbed and organic materials have been placed for disposal. What is a good way to get rid of them? (Virginia)

A—Eat them! Boiled pokeweed greens are a delicacy superior to spinach. Poke is similar to asparagus. All you have to do is gather it, cook and eat it. You can freeze it for winter eating. But don't eat the purple berries. When pokeweed grows tall and the leaves are old and inedible, one can use the fleshy roots. If anyone wants to pursue the subject I will accept letters and answer all of them in the future. I cannot answer individual letters. □

PRESIDENTS from page 29

ing potential; 54 per cent indicated that their clubs have been refusing outside business because of the guideline. Twenty-five per cent of the presidents of member-owned facilities said their clubs have considered giving up their non-profit exemption to secure more non-member income. On first consideration, this figure does not seem great. However, on further consideration, it is considerable when viewed in light of the very advantageous tax status that would be lost. Therefore, these clubs must feel that the potential income that could be derived from outside business, even after taxes, would far outweigh any savings via an exemption. □

# Golf course architects' guide

## EDMUND B. AULT Ltd.

GOLF COURSE ARCHITECT

### *Sculptured Greens*

Member

National Golf Foundation

7979 Old Georgetown Road

Bethesda, Maryland 20014

301-942-0716

301-657-4278

For more information circle number 155 on card

## BELLANTE, CLAUSS, MILLER & NOLAN, INC.

*Art Wall Jr.*

GOLF COURSE ARCHITECTS

Master Planning • Site Analysis

Plans Specifications • Supervision

Irrigation Systems • Storage Ponds

Bellante-Clauss Bldg.

Scranton, Pa. 18503

717-346-8771

Widener Building

Phila., Pa. 19107

215-561-1941

For more information circle number 156 on card

architects of the  
"PLAYABLE"  
golf course

George Fazio • Tom Fazio

308 Tequesta Dr., Tequesta, Florida 33458

Phone (305) 746-4539

P. O. Box 9951, Philadelphia, Penn., 19118

Phone (215) 242-1330

For more information circle number 157 on card

A TRADITION OF DESIGN EXCELLENCE

ROBERT TRENT JONES INC.  
GOLF COURSE ARCHITECTS

7 CHURCH ST.  
MONTCLAIR, N.J.  
07042  
201 744 3033

705 FOREST AVE.  
PALO ALTO, CALIF.  
94301  
415 326 3833

P.O. BOX 4121  
FORT LAUDERDALE, FLA.  
33304  
305 564 3422

For more information circle number 159 on card

## Bob Jordan

Golf Course Constructor

Irrigation Systems

"I Supervise All Work"

235 State St., East Peoria, Illinois

Phone: 699-6974 or 673-1067

For more information circle number 160 on card

DEAN OF GOLF COURSE DESIGN

*Robert Dean Putman*  
GOLF COURSE ARCHITECT



2572 WEST SCOTT

FRESNO, CALIF. 93705

PHONE (209) 439-6927

DESIGNER OF OVER 300 GOLF COURSES

For more information circle number 162 on card

## PUTTING GREEN PERFECTION!



with . . . BENT GRASS STOLONS or SOD

- Washington
- Cohansey
- Arlington
- Congressional
- Toronto
- Pennpar

Phone: Area 313-437-2026

Hiram F. Godwin & Son Inc.

55150 Ten Mile, South Lyon, Mich. 48178

For more information circle number 144 on card

## COMPLETE GOLF COURSE CONSTRUCTION

Also rebuild, move tees and greens, install watering systems.



IBERIA

EARTHMOVING SERVICE, INC.

IBERIA, OHIO • Ph. Galion, O. 419 468-5454

For more information circle number 158 on card

# MADDOX

CONSTRUCTION COMPANY

GOLF COURSE  
CONSTRUCTION  
BY CONTRACT

Since 1924!

P.O. BOX 66  
ST. CHARLES, ILL.  
312-231-2665

212 W. FAIRCHILD  
DANVILLE, ILL.  
217-442-2411

For more information circle number 161 on card

USE YOUR  
ZIP CODE

birth  
defects  
are  
forever.

unless  
you  
help.



give  
to the  
March  
of  
Dimes

THIS SPACE CONTRIBUTED BY THE PUBLISHER

# Buyers' Service

For information on products listed, check appropriate box. Mail page to:  
**GOLFDOM—235 E. 45th St., New York, N.Y. 10017**

## GOLF COURSE

### MAINTENANCE EQUIPMENT

- Aerifying machines
- Blowers/Sprayers
- Edging machines
- Hole Cutters
- Lapping-in-machine
- Mowers
- Mower grinders
- Pumps
- Rakes (trap)
- Rollers
- Sod cutters
- Soil screeners
- Soil shredders
- Spikers
- Sprayers
- Spreaders
- Sweepers
- Sweepers-mulchers (turf)
- Thatch cutting machines
- Thatch cutters and vacuum removal
- Tractors
- Trailers (utility)
- Trucks (utility)

### CHEMICALS

- Algae killer (ponds)
- Turf color spray
- Crabgrass control
- Fertilizers
- Fungicides
- Herbicides
- Insecticides
- Wetting agents

### FURNISHINGS

- Ball washers
- Benches
- Comfort stations
- Course shelters
- Drinking fountains
- Flags
- Flag poles
- Refreshment stands
- Score Card Box (metal)
- Signs: yardage and direction
- Tee markers
- Vending machines

### CONSTRUCTION AND SUPPLIES

- Humus and peat
- Irrigation systems and equipment

- Lighting equipment
- Matting-seedbed protection
- Pipe
- Sand
- Seed
- Soil conditioners
- Stolons
- Trees and shrubs
- Tree care service

### GOLF COURSE ARCHITECTS

### GOLF COURSE CONSTRUCTION

- Stone Pickers

## PRO SHOP

### APPAREL AND ACCESSORIES

- Blouses
- Caps and hats
- Golf shoes (men's)
- Golf shoes (women's)
- Rain jackets
- Rubber spiked overshoes
- Shirts
- Shorts (ladies' and men's)
- Skirts
- Slacks
- Socks
- Sport jackets
- Sunglasses
- Sweaters
- Trophys
- Windbreakers

### GOLF EQUIPMENT AND ACCESSORIES

- Bags
- Bag carts
- Bag tags
- Balls (regular)
- Bath slippers (paper)
- Clubhead covers
- Clubs
- Golf gloves
- Golf practice devices
- Grips
- Grip slip preventative
- Locks for golf bags

### FIXTURES AND EQUIPMENT

- Bag storage racks
- Ball washer detergents
- Club cleaners and polishers

- Club repair supplies
- Floor covering (spike resistant)
- Handicap racks
- Handicap cards

### RANGE SUPPLIES AND EQUIPMENT

- Balls (range)
- Ball dispensers (coin)
- Ball strippers
- Ball washers (range)
- Ball washers (counter & dispenser)
- Clubs (range)
- Mechanical range ball retrievers
- Miniature course obstacles
- Miniature putting lane material
- Practice driving nets
- Range mats

## GOLF CARS

### CARS, ACCESSORIES

- Batteries
- Battery chargers
- Golf cars, new
- Golf cars, reconditioned
- Tires

## CLUBHOUSE

### FOOD, LIQUOR AND SERVICE EQUIPMENT

- Soft drinks, mixers
- Beer and ale
- Liquor
- Wines
- Prepared meats and poultry
- Prepared fish and seafood
- Fats and cooking oils
- Cooking equipment (mixers, slicers, juicers, sharpeners, scales, carts, table tops, peelers)
- Sanitation and maintenance equipment (dishwashers, disposals, steam cleaners and floor maintenance equipment)
- Holding equipment—hot and cold—(refrigeration, freezers, cold plates, steam tables, beverage coolers, ice machines)
- Supplies (china, glass, plastic, paper, pots and pans, cutlery, tools, flatwear, locker-room)
- Furnishings (furniture, wall coverings, floor coverings, lamps, decorative accessories, interior design consultants)
- Locks for lockers (combination—built-in-key-type padlocks)

Is your golf course:

- |  |  |  |
|--|--|--|
| <input type="checkbox"/> Private                                 | <input type="checkbox"/> Resort        | <input type="checkbox"/> Par 3         |
| <input type="checkbox"/> Semi-private                            | <input type="checkbox"/> Public        | <input type="checkbox"/> Military      |
| <input type="checkbox"/> Municipal (city, state or county owned) | <input type="checkbox"/> School        | <input type="checkbox"/> Pitch & Putt  |
|  | <input type="checkbox"/> Company owned | <input type="checkbox"/> Driving Range |

Size of course:

- 9 holes     18 holes     27 holes     36+ holes

Turfed acreage of golf course and club grounds regularly maintained: \_\_\_\_\_ acres.

Send information on products checked to:

Name \_\_\_\_\_

Title \_\_\_\_\_

Club \_\_\_\_\_

Address \_\_\_\_\_

City \_\_\_\_\_ State \_\_\_\_\_ Zip \_\_\_\_\_

## WOMEN from page 56

sional in 1934, she was "it" for two years. "I was all alone, employed by Wilson, given a small salary we called pocket money, my expenses and a royalty on the equipment sold that bore my name. It was the most lovely job in the world and for a short while I was the only one who had it. What a heady feeling. During those years we would play for the sport of it, for the social life it offered and for whatever glory we could get in participating. I remember well those exhibitions for charity with Bob Jones, Henry Cotton and Gene Sarazen. But now girls are playing for over a million dollars. Wow!"

Take a look at how they are scoring. Wow again!

Last year Kathy Whitworth averaged 72.38 for 84 rounds of competitive golf! Other leaders were Sandra Haynie, 72.93 for 68 rounds; Jane Blalock, 73.41 for 80 rounds; Mickey Wright, 74.00 for 27 rounds; Donna Caponi (Young), 75.46 for 64 rounds; Sandra Palmer, 73.32 for 84 rounds and Jo Ann Prentice, 73.94 for 84 rounds.

If a man played as well, his handicap would be scratch and he just might be representing his country in the Walker Cup matches or get an invitation to play in the Masters, not to mention a few dozen member-guests around the country. If he remained an amateur, that is.

In just about every area of golf, women have arrived. And they are here to stay.

## Golf Course Sales

The nation's leading commercial turf products company has several openings for technical representatives to promote a special line of commercial turf products. Representatives will call on golf course superintendents as well as industrial and educational institutions. Applicants should have a BS degree or its equivalent in one of the agronomic sciences, plus have sales or practical experience in the turf industry. In addition to an excellent starting salary, commission and automobile, we offer a comprehensive benefit program at no cost to the employee.

Send resume in confidence to:

Box #314, c/o GOLFDOM

An Equal Opportunity Employer



### JOBS OPEN

**GOLF & COUNTRY CLUB MANAGER.** Leading public golf and country club in Broward County, operating two 18-hole courses, restaurant and bar services, has immediate opening for a professional business manager. The successful applicant will have total P & L responsibility for the Club. He will be expected to develop advertising and promotional programs to build membership, provide effective leadership and employee training, institute operational controls for cart rental, food services, bar and cash control, and substantially increase pro shop profit contribution. Additionally, he will be responsible for all greenskeeping, landscaping and maintenance of equipment, buildings, and grounds. He will supervise a staff of forty permanent employees. Considerable previous experience and a strong flair for public relations are required. Submit detailed resume, including to-date salary history and South Florida golfing community references, in complete confidence, to: Vice-President, Box 401, c/o GOLFDOM.

WANTED: EXPERIENCED GOLF COURSE CONSTRUCTION SUPERINTENDENT for the Florida Area - Must be Qualified - Send complete resume to GOLF COURSES BY IBERIA, INC., Box 62, Iberia, Ohio 43325.

### JOBS WANTED

GOLF PROFESSIONAL Desires Position. Experienced, Age 32, Married, wife can assist. Good References. Will relocate. Write Box 405, c/o GOLFDOM.

PRO-MANAGER available for Golf or Country Club. Thoroughly familiar with All Phases of Golf. Write Box 402, c/o GOLFDOM.

**PGA GOLF PROFESSIONAL—GENERAL MANAGER**—College graduate, sharp businessman, 32 years old, married with family. Experienced teacher and promoter of golf. Excellent references, credit rating, public relations ability and moral character. Seeking similar position at established country club, preferably in Pennsylvania or nearby state. Write Box 403, c/o GOLFDOM.

### BUSINESS OPPORTUNITIES

MFG. REP., covering the Western New York area, is looking for lines. Write Box 404, c/o GOLFDOM.

FOR SALE: Par-3 Golf Course, Driving Range, Miniature, Pro-Shop and 6 Room House. Fully equipped. \$85,000. Qualified buyers contact owner: 5220 Center N.E., Salem, Oregon 97301.

### REAL ESTATE

DO YOU OWN A GOLF COURSE? INTERESTED IN SELLING? Can you quote a realistic price? If so please contact me at 305-842-9876 or write GOLF PROFESSIONAL, 901 Lake Shore Dr., Lake Park, Fla. 33403.

WILL LEASE OR BUY GOLF COURSE in Wisconsin or Northern Illinois. P.O. Box 558, Park Ridge, Illinois 60068.

### MISCELLANEOUS

TIRES: GOLFCART-ARMSTRONG FIRST QUALITY. 18x850x8—\$10.70! 18x950x8—\$10.95! 650x5—\$9.30! 800x6—\$10.70. Quantity discount for 12 or more. Other sizes available. Net, FOB. PUBLIC SERVICE TIRE, P.O. BOX 15, Brentwood, N.Y. 11717.

RATES: Minimum insertion \$13.44 for 20 words or less additional words 81c each; in boldface type 91c per word. Use of GOLFDOM box number counts as five words. ALL CLASSIFIED ADS ARE PAYABLE ON PLACEMENT ORDER. NO CLASSIFIED ADS ACCEPTED AFTER THE 10th OF MONTH PRECEDING DATE OF ISSUE. NO CLASSIFIED ADVERTISING OFFERING NEW MERCHANDISE OR EQUIPMENT WILL BE ACCEPTED.

Send text and payment to: GOLFDOM, ATT: M. Coughlin, Classified Advertising Manager, 355 Lexington Ave., New York, New York, 10017. Under no circumstances are we permitted to divulge the names or addresses of those placing blind advertisements.

Response to all box number ads should be addressed to the Box # c/o GOLFDOM, 355 Lexington Ave., New York, New York 10017. Replies are promptly forwarded to the advertisers. When replies to blind ads require more than 10c postage the additional proper postage for forwarding must be supplied.

# ADVERTISER'S INDEX

| ADVERTISER                  | PAGE    | ADVERTISER                               | PAGE      | ADVERTISER                  | PAGE  |
|-----------------------------|---------|--|-----------|-----------------------------|-------|
| Acushnet Process Sales Co.  | 36-37   | Hercules                                 | 50C-50D   | Oregon Chewings             | 14    |
| Aladdin Labs                | 34A-34B | H & E Sod Nursery                        | 62        | Par-Aide Products Co.       | 41    |
| American Cyanamid           | 29      | Hogan, Ben                               | 24-25, 30 | Pargo, Inc.                 | 28    |
| Aqua-Dial                   | 49      | Holsclaw                                 | 40        | Philadelphia Carpet Co.     | 2     |
| Ault, Edmund                | 63      | Iberia Earthmoving Service, Inc.         | 63        | Proturf                     | 65    |
| Bellante & Clauss, Inc.     | 63      | Jacobsen, Mfg.                           | CII       | Putman, R.D.                | 63    |
| Browning (Jarmon)           | 1       | Jones, R.T.                              | 63        | Rainbird Sprinkler          | 50A   |
| Burgett                     | 26      | Jordan, Bob                              | 63        | Ram Golf Co.                | 34E   |
| Carlisle Tire & Rubber Div. | 6       | Keller, Casual                           | 55        | Reeve Co.                   | 34D   |
| Certain-Teed                | 51      | Keller, Walter                           | 40        | Ryan Equipment Co.          | 5, 12 |
| Chicopee Mills, Inc.        | 54      | Lester Electrical of Nebraska, Inc.      | 50        | A.G. Stafford               | 50    |
| Club Car, Inc.              | 39      | Lofts Seed                               | CIV       | Smithco, Inc.               | 20    |
| Cushman Motors              | 19      | Maddox Construction Co.                  | 63        | Smith, Kenneth              | 38    |
| Eastern Golf Co.            | 38      | Mallinckrodt Chemical Co.                | CIII      | Standard Mfg., Co.          | 23    |
| ESB Brands, Inc.            | 7       | Manhattan Ryegrass                       | 10        | Super Secur                 | 50    |
| E-Z-GO Div., Textron, Inc.  | 8-9     | A.J. Miller                              | 58A-58D   | Telsco Industries           | 46    |
| Fazio, George               | 63      | National Stewart Sandwich Service, Corp. | 21        | Trojan Battery Co.          | 15    |
| Gilison Knitwear            | 34I     |  |           | U.S. Gypsum Co.             | 22    |
| Godwin, Hiram F.            | 63      |  |           | Westcoaster (Otis)          | 33    |
| Golf Across Canada          | 34K-34V |  |           | Westinghouse Electric Corp. | 13    |
| Goodyear Tire & Rubber Co.  | 11      |  |           | Wittek                      | 34H   |

## GOLFDOM

OFFICIALS AND MANAGEMENT MAILING FORM

**IMPORTANT:** Your cooperation with the information below will bring **GOLFDOM** to those responsible for your club's successful operation . . . and keep them up-to-date on the latest and most practical ideas on Administration, Management, Maintenance and Services. Please complete and mail this coupon—**TODAY**—to **GOLFDOM CIRCULATION DEPT.**, 235 East 45 Street, New York, N.Y. 10017. We'll see that those who qualify receive **GOLFDOM** monthly, without cost.

Club or Course Name \_\_\_\_\_  
 Mail Address \_\_\_\_\_  
 City \_\_\_\_\_ State \_\_\_\_\_ Zip \_\_\_\_\_  
 Owner \_\_\_\_\_  
 Other Duties \_\_\_\_\_  
 Street \_\_\_\_\_  
 City \_\_\_\_\_ State \_\_\_\_\_ Zip \_\_\_\_\_  
 President \_\_\_\_\_  
 Other Duties \_\_\_\_\_  
 Street \_\_\_\_\_  
 City \_\_\_\_\_ State \_\_\_\_\_ Zip \_\_\_\_\_

Manager \_\_\_\_\_  
 Other Duties \_\_\_\_\_  
 Street \_\_\_\_\_  
 City \_\_\_\_\_ State \_\_\_\_\_ Zip \_\_\_\_\_  
 Superintendent \_\_\_\_\_  
 Other Duties \_\_\_\_\_  
 Street \_\_\_\_\_  
 City \_\_\_\_\_ State \_\_\_\_\_ Zip \_\_\_\_\_  
 Professional \_\_\_\_\_  
 Other Duties \_\_\_\_\_  
 Street \_\_\_\_\_  
 City \_\_\_\_\_ State \_\_\_\_\_ Zip \_\_\_\_\_

Turfed acreage of Golf Course and Club Grounds regularly maintained:

Course Acres \_\_\_\_\_ Grounds Acres \_\_\_\_\_  
 Is your course new? Yes  No   
 Size of Course:  9 holes  18 holes  27 holes  36+ holes  
 Is your Golf Course:  Private  Semi-private  Municipal  
 (city, state or county owned)  Public  Par 3  Military  
 School  Company owned  Resort  
 Facilities at Course:  Bar  Restaurant  Hotel  Pool  
 Tennis Courts  Pro Shop

If Private Club check No. of members. If semi-private or Public indicate No. of players per week:

100 or less  100-200  200-300  300-400  500-1000  Over 1000

Your Signature \_\_\_\_\_ Date \_\_\_\_\_

# CONTROL MOST TURF DISEASES THROUGHOUT THE GROWING SEASON!

WITH ONE MALLINCKRODT BROAD-SPECTRUM FUNGICIDE!

# KROMAD<sup>®</sup>

## SPRING

Apply 3 oz. KROMAD per 1000 sq. ft. weekly. Controls most spring fungus diseases including dollar spot and leaf spots. For "resistant" dollar spot, use TOBAZ<sup>®</sup> (separately—don't mix with KROMAD) at 2 oz. rate.

## SUMMER

Apply 3 oz. KROMAD per 1000 sq. ft. weekly. Controls brown patch, dollar spot, copper spot, red thread and the leaf spots. In severe brown patch weather, add ½ oz. CALO-CLOR<sup>®</sup> in tank-mix or TOBAZ (separate application) at the 2 oz. rate. If pythium threatens, apply KOBAN<sup>®</sup> (separate application) at 4 oz. rate. For "resistant" dollar spot, apply TOBAZ (separately) at 2 oz. rate.

## AUTUMN

Apply 3 oz. KROMAD per 1000 sq. ft. weekly. Controls most fall diseases including dollar spot, copper spot, red thread and leaf spots. For "resistant" dollar spot, use TOBAZ (separate application) at 2 oz. rate.

For winter turf improvement and protection, see your Mallinckrodt distributor for the finest snow mold control chemicals.

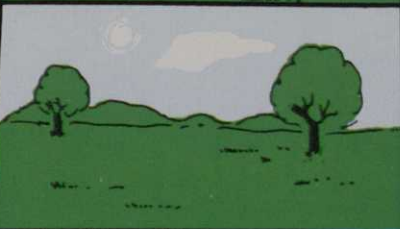
Your distributor has KROMAD folders with this complete program...ask him for yours!



MALLINCKRODT CHEMICAL WORKS

Turf Products

St. Louis • New York • Los Angeles



The KROMAD FUNGICIDE PROGRAM is part of your Mallinckrodt

**T**urf  
**I**mprovement and  
**P**rotection  
**S**ystem.

Get your "TIPS" booklet from your Mallinckrodt distributor.