



## MAINTENANCE CONTINUED

disc spiker, the *Ren-O-Thin* power rake for aeration and thatch removal and several large area turf aerators among others.

**Toro Mfg. Company** introduces the *Parkmaster 9* lawn mower which cuts a swath 18½ feet wide and will mow 80 to 90 acres a day, according to the manufacturer. It features a 79hp turf tractor and nine six-blade reel-type gang mowers. Seven and five unit models are available with cutting widths of 15 and 11 feet, respectively.



Also new this year is the *Spartan 7*, a reel gang mower. Spacing of the seven blades is staggered, varying from 23 to 57 degrees. The mower is 8¼ inches in diameter with seven chromemoly hardened blades double-riveted to cast iron spiders. Width of cut is 29½ inches and height of cut ranges from .50 to 2.25 inches.

**Turf-Vac Corp.** introduces the *Model FM-10* sweeper to its line this year. In addition, there are several new features on the *Model 70* sweeper which will also be shown.



**Vandermolen Corp.** introduces the *Diadem 290* spreader with a 50-foot cutting swath. It is capable of spreading fertilizer, seeds, herbicides, granular chemicals, salt or sand. It

features a Dreycal epoxy plastic finish for long-range rust protection. The *Diadem 290* has a capacity of 11 cubic feet or roughly 770 pounds of fertilizer.

**Warren's Turf Nursery** imports from **Ransomes-Sims & Jefferies Ltd.**, England, a 15-foot hydraulic seven-unit power gang mower for large area mowing. The *Hydraulic 5/7* features hydraulic transmissions, reverse drive to clear choked reels and allow backlapping, power driven wheels for easy transport and is available with a brush and comb set and outrigger rolls.

In addition, the *Auto Certes 20*-inch putting green mower with a high-speed 10-knife cylinder and the *Certes 16*-inch hand-push green mower are offered.

**York Modern Corp.** offers the *LFT-PR*, a lawn de-thatching machine which also removes leaves and grass clippings and windrows at the same time. It features 117 spring teeth mounted in synthetic rubber, a three hp gas engine and a pull-type hitch that can be hooked to any garden tractor. The *LFT-PR* covers a strip three feet wide.

## Turf products, sprayers

**Agrico Chemical Company**, Div. of Continental Oil Company, introduces *Agrinite 24% Nitrogen Fertilizer*, a turf supplement for all seasons. It features a high percentage of water insoluble nitrogen, long-lasting burning action, and it is odorless.

**American Bioculture Company** makes *American Bio-Turf*, a biochemical solution which is said to balance the soil environment by retaining moisture, making efficient use of fertilizer and minimizing mechanical aeration through stimulated microbial action. In addition, it breaks down thatch.

**Aquatrols Corp of America** offers *Aqua-Gro*, *Aqua-T* and *Aqua-Gro Granular* soil wetting agents and *Stoma-Seal* chemical control for wilt.

**The Broyhill Company** makes a line of turf sprayers which includes the *960* series with tanks in 100 to 300 gallon sizes, 500 p.s.i. piston pumps and handguns among other features. In addition, Broyhill makes the *Model 1860* for spot turf application and the 150-gallon *Model 1660* with eight-inch flotation tires.

**Certified Laboratories** introduces the *CCL-500* line of high temperature lubricants for maintenance equipment to its line of fertilizers, weed killers and supplemental feeding products for greens and fairways. The *CCL-500* line includes solvents and de-greasers.

**Chanderlin Seed Company**, Div. of Loft Seed Company, offers *Baron Kentucky Bluegrass*, a new aggressive variety. It is dark green, wide-bladed, low-growing, dense and rapid-germinating. It will be available in the fall of 1971.

**Chemagro Corp.** offers a line of pesticides which includes *Baygon*, a wettable powder for control of flies and mosquitoes; *Dasanit 15% Granular*, an ornamental and turf nematocide for control of plant parasitic nematodes; *Dexon*, a wettable powder for control of root rot, seed rot, heart rot and cottony blight; and *Dyrene*, a wettable powder for fungus control.

**Chipman Div.**, Rhodia Inc., makes *Chipco Turf Products* which include *Chip-Cal Granular* and *Chipco Turf Herbicide MCPP* among other fungicides, herbicides and pesticides.



**W.A. Cleary Corp.** offers a line of herbicides and fungicides which in-  
(Continued on page 62)



TURF PRODUCTS CONTINUED

cludes *Clear-Spray*, a liquid anti-desiccant to prevent moisture loss; *Caddy*, a liquid cadmium fungicide for red thread, dollar and copper spot; and *MCPP* for weed control in Bentgrass greens. Also offered are *All Wet*, a 100 per cent non-ionic wetting agent, *Thimer*, a wettable powder fungicide and others.



**Cloro-Spray Corp.** features *Dew-Down Xtra* wetting agent and *Ferro-Spray Plus*, a liquid fertilizer con-

taining iron, in its line of fertilizers and wetting agents. *Dew-Down Xtra* contains chlorophyll to aid photosynthesis. *Ferro-Spray* is an iron solution which is soluble in cold water and stable.

**Con-Pres-Pak** has developed a constant pressure pumping package which maintains a constant preset pressure of up to 150 pounds for up to 1,500 gallons per minute. It is available in a vertical configuration for use in a supply well or pump.

**Diamond Shamrock Company** offers a line of herbicides and fungi-

# With a VIKING electric car fleet your total investment return is guaranteed in only 18 months!

Pretty bold statement, right? But we at Viking know we have the product, the experience, the organization to back it up. All we want is the opportunity to prove it to you.

Our two models, the Viking '71 and the Viking Baron are a blend of safety, styling and

simplicity of operation and maintenance...the results of 16 years of pioneering golf car design. Take a look, take a ride. You'll realize Viking is the professional approach to golf car fleet investment.

For a no-nonsense, black on white look at the figures as well as a demonstration ride in the new Vikings, call or write today.

**VIKING CORPORATION**  
P.O. Box 3628, South Bend, Indiana  
Phone AC 219/234-0075



# VIKING '71

For more information circle number 230 on card



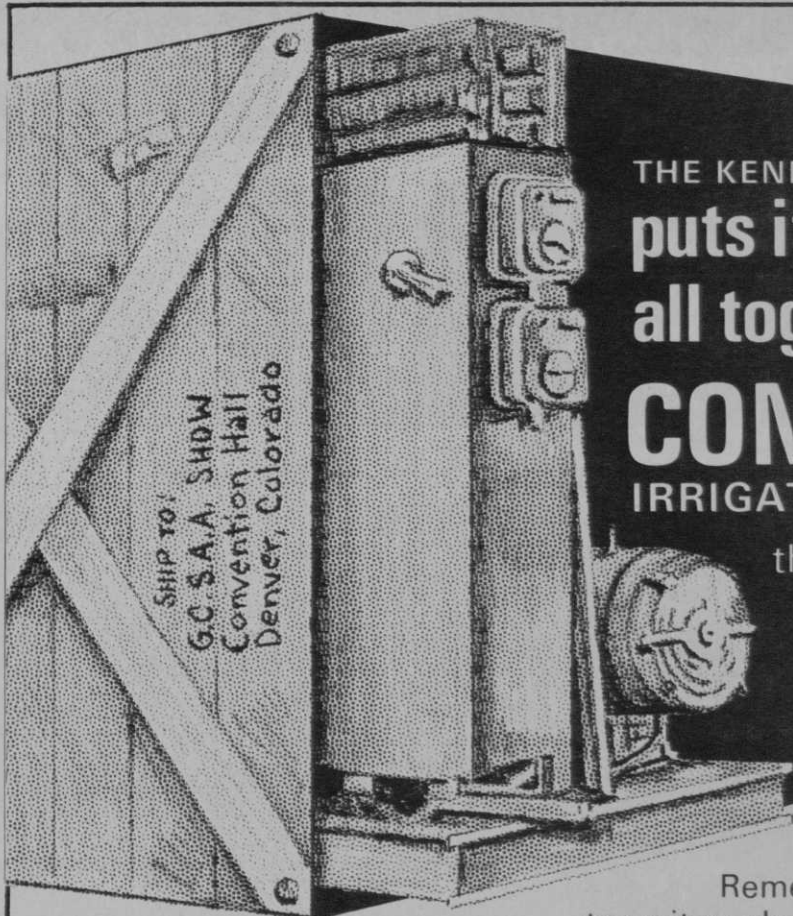
cides for turf disease control. Featured are *Dacthal W-75*, a pre-emergent herbicide for crabgrass and *Poa annua* control; *Dacamine Turf*, a post-emergent herbicide for control of broad leaved plants, and *Daconil 2787*, a non-mercurous fungicide for turf disease control.

**E.I. DuPont De Nemours & Company** introduces *Tersan 1991* new in its line of turf fungicides. It is recommended for use as a spray in controlling dollar spot, brown patch and Fusarium patch. Also offered are *Tersan LSR* turf fungicide recommended for leaf spot diseases and *Tersan SP* for control of snow mold and Pythium blight.

**Eagle Picher** makes *Dialoam*, a turf condition composed of a granular diatomite material. It is said to cut compaction, improve drainage and retain moisture and is non-toxic and compatible with all fertilizers.

**Elanco Products Company** features *Balan Granular*, a pre-emergent turf herbicide for control of major weed-grasses including *Poa annua*. The chemical is waterproof to prevent

(Continued on page 65)



THE KENNETH BARRIE CORP.

puts it  
all together with

## CON-PRES-PAK

IRRIGATION PUMPING SYSTEM

the new "total package" of  
tomorrow that makes  
today's system obsolete.

Remember when you had to wait weeks, perhaps months for all the parts that made a pump? This not only took time but also cost more to put it all together. Those days are gone. Forever! Now that the Kenneth Barrie engineering team has designed the remarkable Con-Pres-Pak. It's tomorrow's irrigation pumping system available today. Worth your investigation.

### Saves Installation Time and Money

The Con-Pres-Pak comes complete. No waiting for necessary parts to arrive. Just wire and plug in. Assembly is a thing of the past.

### Saves Space

Takes less space because all parts are factory designed and pre-assembled. All fit together in one unique, compact unit. Incredible!



**THE KENNETH BARRIE CORP.**

*the country's oldest golf course irrigation company*

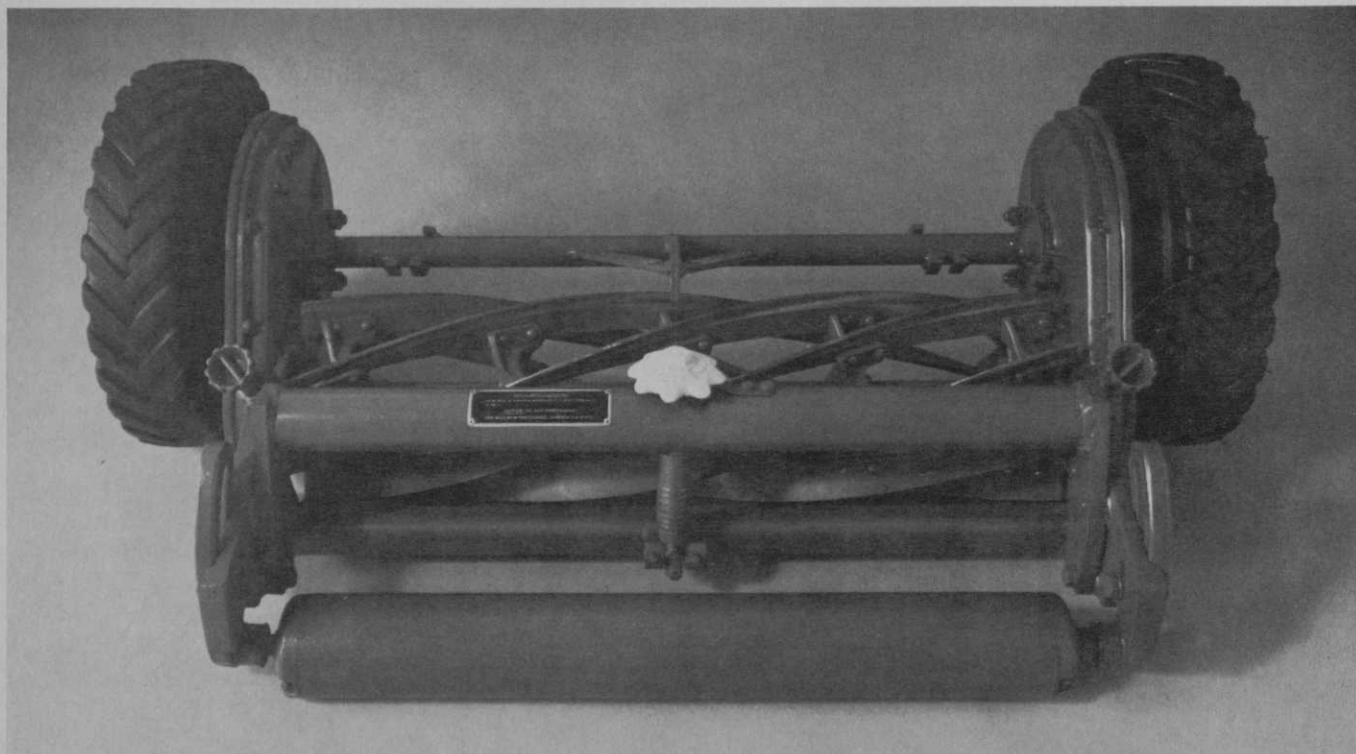
*Since 1914*

375 Centre Street Boston, Mass. 02130 (617) 522-9700

See the New Con-Pres-Pak in Booth F-72 at the  
G.C.S.A.A. SHOW . . . Convention Hall • Denver, Colorado

Biggest advance in gang mowing in 50 years...the new

# Spartan 7†



One-knob lets you adjust the bed knife without a wrench.

Your most inexperienced man can be a gang mowing expert with the new Spartan 7† from TORO. He turns one knob, mounted in the center of the frame, to adjust the bed knife clearance. No more fiddling with four bolts. One click of the center knob changes the blade 1/1000th of an inch. It's simple,

†Exclusive trade name of Toro Manufacturing Corp.

accurate, and safe. Reduces adjustment time up to 50%.

This Spartan 7 is also more rugged than any gang mower you can buy, so it will hold adjustments

**TORO**  
We Take Care

longer. It has 7 blades instead of the usual 6, which means you'll get a better cut. Cutting height adjustments are easier, too. And you can have steel, semi-pneumatic, or pneumatic tires.

If you want to take better care of your turf, and save time in the process, get in touch with us.

For more information circle number 239 on card



TURF PRODUCTS CONTINUED



leaching away by irrigation and rainfall. It contains no poisonous arsenic, mercury or lead. It also leaves no residue since it is gradually deactivated by normal soil activity.

Hercules Inc., makes Nitroform, a nitrogen fertilizer that comes in two forms. Blue Chip is granular and free-flowing and designed for dry application in mechanical spreaders. Powder Blue is a powder suspended in water to be applied with a sprayer and used on greens and other closely knit turf.

J.M. Huber Corp. introduces Huber Top Dressing Mix, a ready-to-use top dressing composed of sand, soil and peat. In addition, a fibrous peat is offered in bulk or in four cubic foot bags.

Mallinckrodt Chemical Works offers Calo-Clor turf fungicide and other turf products. Calo-Clor is 60 per cent mercurous chloride fungicide and is recommended for brown patch, dollar spot and snow mold control. In addition, the Spray-Hawk precision mobile turf sprayer is offered.

Millburn Peat Company, Inc. offers peat moss for soil aeration, improved drainage and compaction prevention in building and top-dressing greens and maintaining club grounds.

(Continued on page 66)

## THE NATURAL TEE

Highland Colonial Bentgrass is rich-appearing fine-bladed luxury grass that will give you the kind of thick carpet the modern golfer looks for.

Durable and beautiful . . .

Highland Colonial Bent is just possibly the best value in grass seed today.

Adaptable to a variety of soils and climates, it will thrive at its ideal cutting height of 3/4 inch or even when close cut to 1/4 inch.

It may be used alone or in a mixture. Highland Bent is a cool-season variety that is always in good supply. With some 8 million seeds per pound, the potential number of plants is great.

Write for free brochures to Dept. B

Highland Bent on the Golf Course  
Cultural Practices  
Answers to Questions About Highland Bent



## HIGHLAND COLONIAL BENTGRASS COMMISSION

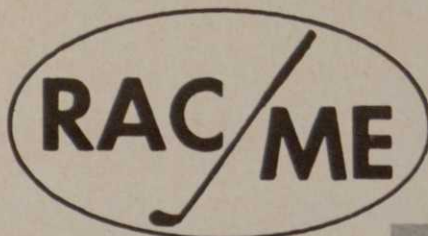
SUITE 1, RIVERGROVE BUILDING

2111 FRONT STREET N. E.

SALEM, OREGON 97303

For more information circle number 206 on card

## GOLF BAG STORAGE RACKS



TRADE

MARK

38 YEARS IN BUSINESS  
Call Collect 301-322-3900  
Or Write For Free Literature

### INSTALLATIONS INCLUDE:

Chevy Chase C.C., Chevy Chase, Md.  
Congressional C.C., Bethesda, Md.  
Garden City G.C., Garden City, N.Y.  
Dunbar C.C., Lake Arrowhead, Calif.  
Scarsdale G.C., Hartsdale, N.Y.  
Royal Poinciana G.C., Naples, Fla.  
Longboat Key C.C., Sarasota, Fla.  
Woodbridge C.C., Woodbridge, Conn.

## IMPROVE BAG STORAGE BEST BY TEST

WE DESIGN YOUR LAYOUT  
ECONOMICAL — EASY TO  
ASSEMBLE HEAVY DUTY  
FURNITURE STEEL



## ACME IRON WORKS, INC.

4900 Frolich Lane, Kenilworth Ind. Park  
Tuxedo, Md. 20781

For more information circle number 256 on card



TURF PRODUCTS CONTINUED

**Milwaukee Sewerage Commission** offers *Milorganite Fertilizer*, a standard organic fertilizer for golf courses.

**F.E. Myers & Brothers Company** introduces the *Myers 7020 Series Power Sprayer* designed for chemical applications. The 7020 features a high pressure, 20 gallons per minute pump, 12hp electric start engine and high flotation tires. Epoxy coated tanks are available in 300, 400 and 500 gallon sizes. Also offered are the *Myers 3-point hitch P-T-O* air sprayer and the *Myers 100-ETMP Series* low cost, compact engine powered sprayer which uses a high pressure gun.

**National Chemsearch Corp.** introduces *Gro-Tard*, a liquid growth control treatment which inhibits weed growth without harming turf, according to the manufacturer. A once-a-year application stunts the growth but makes grass thicker.

**Penncross Bentgrass Assn.** promotes a line of putting green grass seed which was developed at the University of Pennsylvania.

**Plant Marvel Laboratories** makes *Plant Marvel* 100 per cent water soluble fertilizers with sequestered minor and trace elements to assure ready root absorbance. They are compatible with all insecticides and are available in eight formulas. Also offered are eight *Aqua-Sol* water soluble formulas for turf feeding and *Fertil-Ade* liquid fertilizer which contains 100 per cent active elements for turf feeding through roots and foliage.

**Princeton Turf Farms** makes a line of fertilizers.

**O.M. Scott and Sons Company** announces two additions to their line of *ProTurf* products. These are *ProTurf Starter Fertilizer* and *ProTurf Iron-S*. The Starter Fertilizer provides phosphorous, potassium and nitrogen to aid growth. Iron-S corrects yellowing due to iron chlorosis with an iron-active ingredient.



**Smithco, Inc.**, offers the *Hawk Sprayer* which features a fiberglass tank available in 200 and 300 gallon sizes. The *Golden Eagle Pump* has a pressure range of 0 to 500 p.s.i. In



addition, Smithco offers the *Red Rider*, a three-seat vehicle with a capacity of 23 cubic feet and a heavy gauge steel ramp loading tailgate. It is powered by a Kohler engine.

**Stauffer Chemical Company** offers *Betasan* for control of crabgrass and *Poa annua*; *Aspon*, an insecticide for chinchbug control; *Vapan*, a temporary soil fumigant; and *Eptan*, a herbicide for wheat control in flowers and ornamentals.

**Swift Agricultural Chemicals Corp.** makes *Par-X* fertilizer for greens, tees and fairways. It contains a slow-release nitrogen for turf feeding. It is burn-free and leech-resistant.

**Terra-Green Div., Oil-Dri Corp. of America**, features *Terra-Green* special topdressing to reduce compaction, increase water filtration rates and provide better drainage for greens and tees.

**Texas Turfgrass Assn.**

**Tuco Div., Upjohn Company**, offers the *Acti-dione* line of broad spectrum turf fungicides. They are recommended for the prevention and control of disease on bentgrass, Kentucky bluegrass, Merion bluegrass, fescues, bermudagrass and St. Augustinegrass.



**U.S.S. Agri-Chemicals Div., United States Steel Corp.**, makes *Vertagreen* turf foods and *Vertagard* turf protection chemicals. Vertagreen is available in *Tee-Green Technical Turf* food for greens and aprons, *Tournament Plus*, a fairway fertilizer, and *Weed & Feed* for *Poa annua* and crabgrass control. The Vertagard line includes herbicides, insecticides and fungicides. In addition, the *Vertagreen Rotary Spreader* is available for \$16.95.

**Velsicol Chemical Corp.** features *Banvel* herbicide for control of broadleaf weeds and knotweed. Effective at lower temperatures, Banvel is said to control weeds with an application of one pound per acre. Recommended for use during periods of adequate rainfall.

**Vineland Chemical Company** offers a line of herbicides which includes *Dal-E-Rad*, an arsenate compound for weed control and *Vi-Pex* and *Vi-Par*, liquid herbicides for clover, ivy, chickweed and bentgrass control. In addition, a line of fungicides is offered.

**Warren's Turf Nursery** features *A-20* and *A-34* bluegrass. A-20 is a hardy, disease resistant bluegrass which can be plugged into fairways with an automatic plugger. A-34 is recommended for heavily shaded areas.

(Continued on page 68)



## Great Drives Fly Off Agrico® Tees

That's because golf superintendents rely on Agrico Country Club Fertilizers for top-notch tees.

Agrico tees are thick, rich, colorful tees. The kind that builds confidence at the start of each new hole . . . brings out the best in a golfer. That helps keep your membership enthusiastic about your course . . . a golf superintendent's dream.

Write us about Agrico's Custom-Tailored Golf Course Program. Maybe we can make your dream come true.



### AGRICO® COUNTRY CLUB FERTILIZERS

AGRICO Chemical Company, Memphis, Tenn. 38117  
Division of Continental Oil Company • Phone (901) 682-1561  
Sales Office: Carteret, N. J. 07008 • Phone (201) 541-5171

For more information circle number 204 on card

# Betasan<sup>®</sup> lets your turf grow free

Your turf grows free all season from unwanted grasses and weeds that compete with the beauty of your landscape.

Free from weed competition for soil moisture, plant food and room for your grass to grow healthy and plush.

Now, treat greens, tees, fairways and other turf with Betasan selective herbicide . . . to stop crabgrass and goosegrass . . . prevent *Poa annua* from developing into a problem. Betasan also controls broadleaves, such as henbit and shepherdspurse.

Betasan liquid or granules stop unwanted weed growth in bentgrass, bluegrass, fescue, Bermudagrass, dichondra and more than 35 ornamentals. Betasan interferes with sprouting weed seed . . . controls them before they get a growing start.

Betasan gives effective, economical and long-lasting grass and weed control in established turf, including dichondra . . . leaves no tell-tale burn often resulting from weed control treatment.

This year, use Betasan . . . produce better turf and grass that's free from unsightly weed growth. See your distributor today for Betasan.

For best results, use Betasan correctly by following label directions carefully. Stauffer Chemical Company, Agricultural Chemical Division, Dept. HD, 299 Park Avenue, New York, NY 10017.

Betasan from



"COME TO SEE US AT BOOTH NUMBER B-32"



TURF PRODUCTS CONTINUED

**Wyandotte Chemical Corp.** offers *Support* and *Surface*, calcined clay soil amendments for constructing and reconditioning greens. *Support* also contains starter nutrients.

## Accessories

**Container Development Corp.** offers the *Lewis Line* of spin action ball washers with one gallon water capacity, closed top, stainless steel plunger rod, nylon brushes, heavy duty towel clip, ball ejection tray and over-the-post mounting. In addition the *GF Series* of tapered fiberglass flagpoles is offered.

**Fore-Par Mfg. Company** introduces a new line of *Anti-Rebound* tee markers and a line of accessories which includes practice green markers, personalized flags and tee plaques.

**Par-Aide Products** makes a line of small accessories which includes the *Masters*, the *DeLuxe Single* and the *Twin* ball washers. In addition Par-Aide offers tee and locker room benches, flagpoles, flags, tee markers, cups and hole cutters and a line of spike brushes.

**Standard Mfg. Company** makes a line of color-coordinated consoles that incorporate into one unit a washer, litter caddie, towel and spike cleaner. Color-coordinated tee benches and markers also will be offered.

## Other

**American Society of Golf Course Architects**

**Foley Mfg. Company** makes the *Model 365 Lapping Machine*, the *Model 388 Lawn Mower Grinder* and the *Model 398 Rotary Blade Grinder* and *Balancer*. The *Model 365*, which sells for \$115, features a reversing switch which sharpens reel mower blades without removal. The *Model 388* for sharpening rotary mower blades is equipped to make right and left hand cuts and has a built-in balancer.

**National Golf Foundation** □

For more information circle number 269 on card



Superintendents attending this year's convention will discover in Denver hospitality, good eating and a bit of nostalgia

# MILE HIGHLIGHTS

By Lois Barr Reporter, Denver Post

Denver in February can be delightful or disarming depending on the weather. The temperature will probably be in the 30s, but it could be lower or higher. The Mile High City has been known to receive snow in September and temperatures that started seeds sprouting in February.

Visitors in February then should consider the weather unpredictable and follow the rule of thumb: Bring a heavy winter coat; then leave it in the hotel room if the temperature dictates.

In addition to unexpected warm weather, Denver can be delightful in other ways. The city, for example, has a seemingly unlimited supply of good restaurants, many in the downtown area. Although far from the ocean, the sea food is rated excellent in at least two of them—**Laffites** and the **Boston Half Shell**.

Both offer excellent service and both are within walking distance of most hotels. Laffites is located on the corner of 14th and Larimer Streets in what is known as Larimer Square, which also houses boutiques, nightspots, restaurants and a theater.

After investigating **Poor Richard's**, a leather shop, and other boutiques, a visitor might wish to have a beer at **Your Father's Mustache**, then dine at the **Bratskeller**, a German beer stube. Visitors also may decide to tour the rest of Larimer Street and discover what Denver was like just after the turn of the century.

Although many of the big hotels and other famous buildings are gone, some still remain. The street now is a conglomeration of saloons, pawn shops and discount stores filled with some of the city's more seedy characters. The visitor should stop in for at least one drink at **Denver's Oldest Bar**, 1339 17th Street, which really is the oldest bar in the city and dates back to the early 1900s. However, as a warning, walk there

only while it is still light.

If the convention-goer chooses to dine in the Boston Half Shell on bouillabaisse, the restaurant's specialty, he'll also want to survey the surrounding area.

The Boston Half Shell is located in Brooks Towers, a skyscraper of an apartment building. Although not on a par with the Empire State Building, it is the tallest in Colorado.

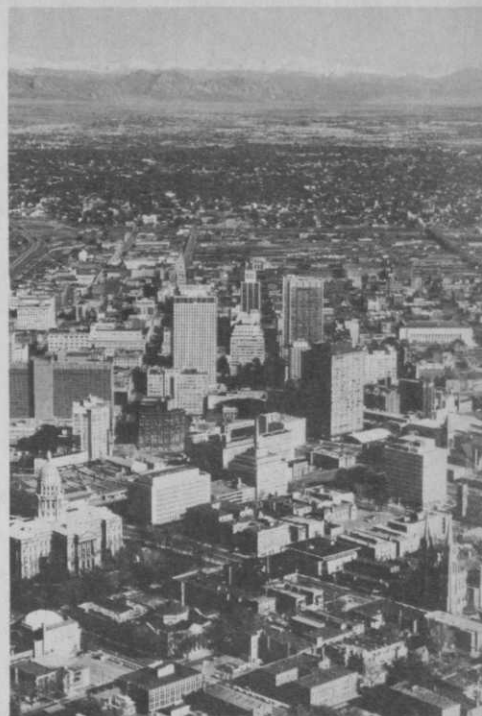
In addition to the Boston Half Shell, the building also houses a coffee shop, a small but expensive dress boutique, a flower shop and a simply wonderful nightspot called **Marvelous Marvs**. Marvs, which has a slight cover charge, features top-flight entertainment and is worth an evening's visit.

Also combining historical interest with good food is the **Brown Palace Hotel** located in the center of downtown Denver at 17th Street and Tremont Place. The architecture of the hotel is modern, or so it was several decades ago when the hotel was built. The story goes that the architect, believing his work was a failure, threw himself from the top floor and was killed.

Nevertheless, the Palace became one of the most famous buildings in Colorado when H.A.W. Tabor, the silver king from Leadville and husband of Baby Doe, stayed there on his frequent trips to Denver.

The hotel is still furnished in keeping with a bygone era. Some original miniature ships, thought now to be worth several thousand dollars, are there. It is, therefore, appropriate that the hotel's prize restaurant should be called **The Ship's Tavern**. It's a pleasant place to eat. The service, atmosphere and food are excellent.

Other restaurants which will delight the visitor are the **Qvorvm** (pronounced Quorum) and **Emerson Street East**. The Qvorvm, in the Argonaut Hotel at 233 East Colfax



Avenue, features European cuisine and has repeatedly been named one of the best restaurants in the country by *Holiday Magazine*.

To sports fans Emerson Street East, at East Colfax Avenue and Emerson Street, is a delight. Pictures of famous people and moments in sports decorate the walls and the menus. The restaurant is a favorite spot for the Denver Broncos, who gather there after games. A jazz combo entertains.

From restaurant-going to shopping isn't much of a transition, since the facilities for both are located in the downtown area. **The Denver**, a large department store, should be first on the shopping list. Its location at 15th and California Streets is kitty-corner from The Denver Post, which has a history all its own. The paper was started in 1895 by F.G. Bonfils and Harry Tammen, a couple of unscrupulous scoundrels whose escapades built a Rocky Mountain empire. Miss Helen Bonfils, daughter of old F.G., now owns the newspaper. A visitor, taking a tour of the Denver Post building, is reminded of the paper's vigorous past.

After shopping at The Denver, the convention-goer can go next door to **Neusteters** or across the street to **Gano-Downs**. Both stores are higher priced than The Denver, but carry smart-looking clothes. As the visitor walks up 16th Street to **May-D & F**, one of Denver's leading depart-

*(Continued from page 97)*

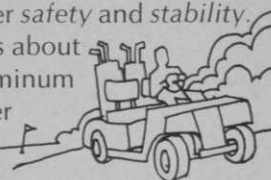
# The Golf Car of 1975 NOW!



The Best DRIVE You'll Ever Make  
The Best MAKE You'll Ever Drive

## Why is it a 4-Wheeler?

A leading insurance authority predicts an end to the 3-wheel golf car by 1975. The 4-wheel CAROCHE outperforms a 3-wheeler, with greater safety and stability. Lighter than most 3-wheelers, it costs about the same. And its sturdy aluminum frame and fiberglass body will never rust, corrode or need painting.



## Why is it electric?

Congress has set 1975 as the deadline for eliminating harmful exhaust from cars. The electric CAROCHE will go 36-54 holes on hilly courses, without the pollution, smoke, noise, odor or fire hazard of gas cars. In addition, independent studies have proven electric vehicles cost considerably less to operate and maintain than those powered by gasoline engines.



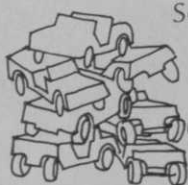
## Why is CAROCHE ahead of its time?

When CAROCHE was introduced in 1970, it caught the golf car industry by surprise. For instance, it was the first golf car to employ both automotive type hydraulic wheel brakes and a mechanical braking system on both rear wheels. It was the only golf car available with supplementary bag racks—easily attached or detached at rental point—enabling it to carry either three or four bags. Its combination of light weight, compact size and easy serviceability made it an instant winner with fleet owners. And how do you make the best even better?



That's the story for CAROCHE in 1971.

## Why don't you at least ask for a demonstration?



Some golf cars will have obsoleted themselves by 1975. CAROCHE may be as much as a decade ahead of its time. Write or call today for a free demonstration of the golf car of the future —CAROCHE.

*Caroche*

What a golf car should be.



P.O. Box 897 Augusta, Ga. 30903 (404) 798-8687

**We'd like a CAROCHE demonstration.**

NAME .....

CLUB .....

ADDRESS .....

CITY ..... COUNTY .....

STATE ..... ZIP .....

Limited Number of Dealerships Available. Write for Details