

"The Grass Is Always Greener"

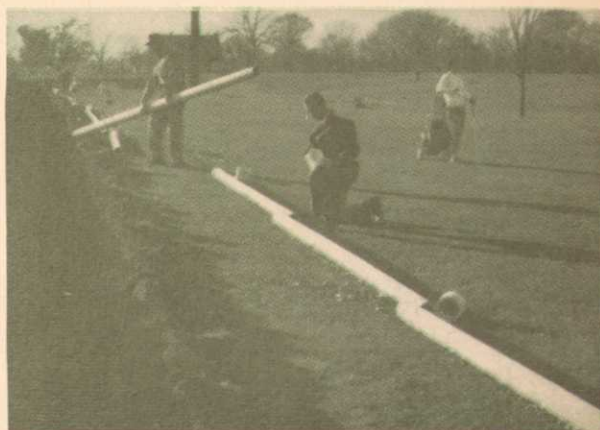


NEW 16-mm FULL COLOR SOUND FILM AVAILABLE FREE FOR CLUB SHOWINGS!

See how your club can "beat the drought." Select dates for showing, fill out and send in coupon. Allow at least two weeks for delivery of film. For further information write to Certain-teed Products Corp., Pipe Division, 540 Pennsylvania Avenue, Fort Washington, Pennsylvania 19034.



CERTAINTEED



Public Information Dept.
Certain-teed Products Corp.
540 Pennsylvania Avenue
Fort Washington, Pennsylvania 19034

Club Name

Club Address

City

State

ZIP

My Name

Preferred Date

Alternates

Signed



Today's best mowing power. New Ford LCG tractors. Do a lot more.

Beat the push for time with versatile, economical Ford LCG (low center-of-gravity) tractors. Powered for your operation, there are two sizes—the Ford 2110 LCG and the more powerful Ford 4110 LCG. Here's all you need to handle large mower set-ups, to maintain fast mowing speeds in all conditions.

All the features you expect from Ford are available. Tractor weight is well distributed on front and rear wheels, so these units tread lightly on turf. Where increased flotation is desired, wide-base front tires and jumbo rear tires are available. A full range of mowing speeds is furnished by the Ford 8-speed dual-range transmission, or the optional 10-speed Select-O-Speed transmission to match load, ground, and slope conditions.

Ford LCG tractors mow, and do a lot more. They can help you make the most of available manpower, can help hold the ceiling on rising costs. See your Ford tractor and equipment dealer soon. Ford Motor Company, Birmingham, Michigan 48012.



Ford—your key
to time.
Time—your key
to profits.

FORD TRACTOR



With a power increase of 14 per cent, the Ford 4110 LCG can help you beat the push for time, on all your course maintenance operations. The Ford 4110 now delivers 52 observed PTO horsepower.* The Ford 2110 LCG delivers 30.85 observed PTO horsepower.*

*Manufacturer's rating with 8-speed dual range transmission.

For more information circle number 255 on card

Basic Equipment

Continued from page 60

Primary Area Use

18-Hole Golf Course					Quantity	BASIC EQUIPMENT REQUIREMENTS FOR VARIOUS GOLF COURSES							FERTILIZER SPREADERS*							SOD EQUIPMENT AND MISCELLANEOUS						
9-Hole Golf Course																										
Par 3—18-Hole																										
Executive 18-Hole																										

*Cyclone Spreaders may also be used for distributing seed.

SPRAY EQUIPMENT												
1	1H	1H	1		Power Spray; 10-20 GPM pump, 400 P.S.I. with 200-500 gallon tank	X	X	X	X	X		X
1	1I	1I	1		Weed Boom (20')				X	X		X
1J	1J	1J	1J		Portable Weed Boom (4'-8') mounted on wheels (bicycle wheels, etc.)	X	X	X				
1	1	1	1		2-4 Nozzle Spray Gun							
1	1	1	1		Scale (Balance) for weighing fungicides, insecticides, herbicides							
1	1	1	1		3 Gallon Hand Spray—spot weed control, etc.	X	X	X	X	X	X	X

H—A 3-wheeled turf vehicle w/portable 110 gallon Power Sprayer can be substituted especially under conditions where use of the large Power Sprayer is impractical.

I—16' Weed Boom where equipment under footnote H is used.

J—May be purchased or fabricated. Not necessary where 3-wheeled turf vehicle is used since it can be driven across green when spraying.

TRACTORS-TRUCKS-TRANSPORT VEHICLES												
1	1	1	1		Diesel or gasoline low center of gravity Tractor with 3-Point Hitch and P.T.O.	X	X	X	X	X	X	X
1	1	1K	1		½ Ton Pick Up Truck (equipment transport/service)	X	X	X	X	X	X	X
2	1	1L	2		3-wheel turf vehicles (equipment and personnel transport)	X	X	X	X	X	X	X
1			1		Tractor (turf) w/dual rear wheels and Dump Box	X	X	X	X	X	X	X
1M	1N		1M		Diesel or gasoline agricultural type Tractor with Front End Loader							

K—3-wheeled turf vehicles could be substituted because of the smaller area.

L—Not really necessary if a ½ Ton Pick Up Truck is utilized.

M—Optional—increases efficiency of soil handling and can be used for other purposes such as pulling the Power Sprayer in the event other Tractors are not available for one reason or another.

N—This is a luxury item on this size golf course. It would be more practical to purchase a detachable Front End Loader for use on the LCG Tractor with 3-Point Hitch and P.T.O.

Continued on page 70

Treatment

- | No. | Nature of Treatment |
|-----|---|
| 1. | Minimum maintenance—6 lb N/1,000 sq. ft., no topdressing, no cultivation and liming to maintain 6.0 pH. |
| 2. | Spoon cultivation and vertical cut to break cores—late April, June and September. |
| 3. | Spike (disc spiker)—two week intervals, June 1 - August 15. |
| 4. | Groove cut machine—April and September. |
| 5. | Groove cut plus topdressing—April and September. |
| 6. | Wetting agent—two week intervals from June 1 to August 15. |
| 7. | Ground limestone—25 lb/1000 sq. ft./year. |
| 8. | Extra nitrogen fertilizer—total of 9 lb. N/1000 sq. ft./year. |

9. Topdressing—April, May, June, July, September.
10. Combination of treatments 7, 8, and 9.

The organic matter accumulation was measured in terms of actual depth and by the weight loss occurring during ashing of the organic material. Additional observations were made of turfgrass quality, turfgrass color, disease incidence, annual bluegrass incidence, and occurrence of dry spots.

Topdressing at a rate of 0.2 cubic yards per 1,000 sq. ft. per year and groove cultivation were the most effective management practices in reducing the accumulation of thatch on a bentgrass turf maintained at one-quarter inch. Annual liming and spoon cultivation gave some indications of deterring thatch accumulation. In contrast, high nitrogen fertilization and the use of a wetting agent tended to increase thatch accumulation. Observations made

Continued on page 81



**VENZKE
ENDOR**
COIN OPERATED
RANGE BALL
DISPENSOR

25c Vends Bucket of Balls
24 hours each day - All Year 'round
ALL WEATHER-ALL MECHANICAL
5 YEAR GUARANTEE

FREE BROCHURE - WRITE OR CALL
Collect **215-372-5185**

Reading Golf, Inc.
300 SPRUCE ST., READING, PA. 19602

For more information circle number 205 on card



WHAT'S SO SPECIAL ABOUT CYCLONE SPREADER/SEEDERS?

**SPEED/ACCURACY
FREEDOM FROM STRIPES/VERSATILE
DEPENDABLE/EASY TO USE**

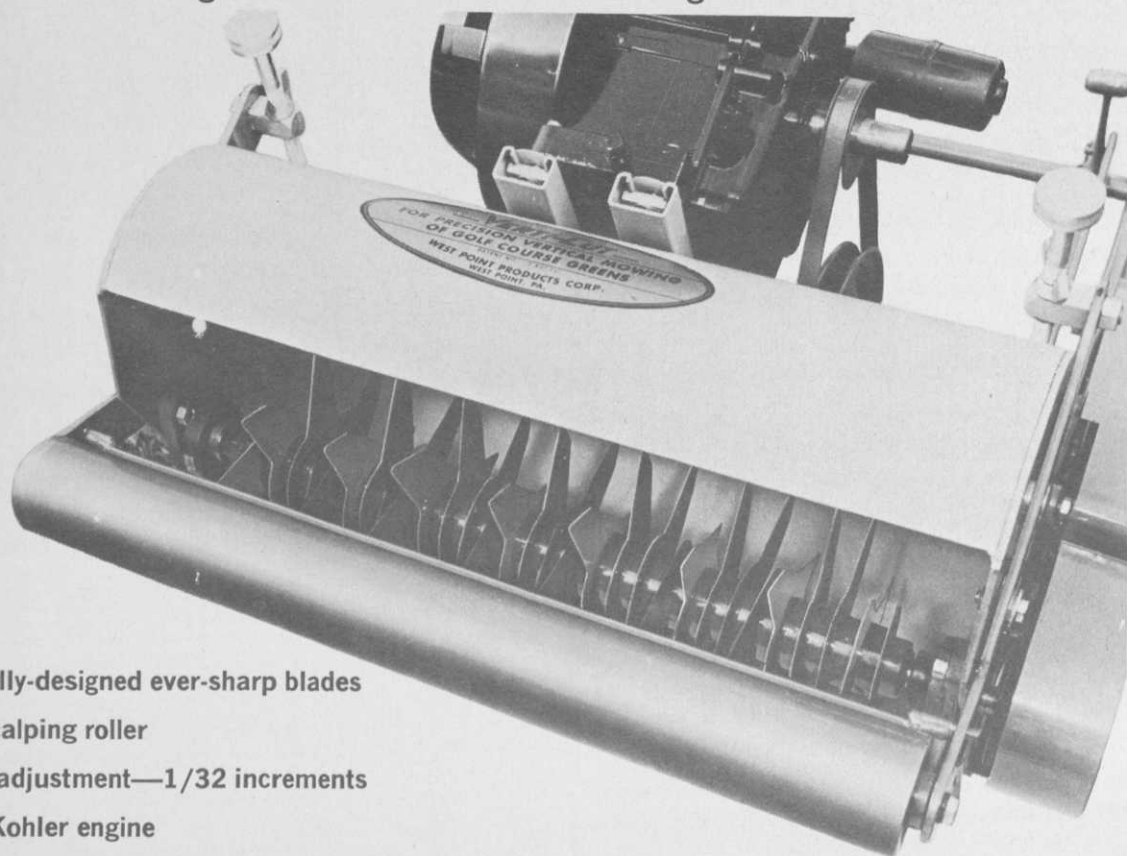
There's a Cyclone for almost every spreading and seeding job . . . more than 20 different models! If you have a special spreading or seeding problem, let us know about it. Chances are we already have the answer for you. □ Cyclone Spreader/Seeders save time—save work—save materials. They broadcast at precise, recommended rates—up to 5 times faster than ordinary spreaders. Cyclone Equipment is widely used for seeding, fertilizing, applying granular insecticides, herbicides, ice melters, soil conditioners, dust control materials, etc. Comprehensive spreading charts are included with all models. □ It's results that count! And for best results—use Cyclone Equipment. See your Cyclone Dealer or Distributor today, or ask us for full information on the dependable, versatile Cyclone line of Broadcast Spreading Equipment. □ Manufacturers of Broadcast Spreading Equipment since 1868—1968 our 100th Anniversary!

THE CYCLONE SEEDER CO., INC.
Dept. 60-10, Urbana, Indiana 46990

Cyclone

*Do YOUR golfers know that the VC-5 VERTI-CUT® reduces golf scores??

*Grain develops quickly on intensively managed turf. It can deflect the best putts. The VC-5 Verti-Cut® removes "grain" with no disturbance to the grass.



- specially-designed ever-sharp blades
- anti-scalping roller
- finest adjustment—1/32 increments
- 7 HP Kohler engine

Some fifteen years ago, when golf course greens were still being raked by hand to remove thatch, West Point designed and introduced the first Verti-Cut® Mower for greens. Over the years many refinements have been made to that original model. The new model VC-5 Verti-Cut® is equipped with 7 HP Kohler engine.

But the design of the patented blade has remained the same. It CUTS OUT grain and thatch leaving behind it a smooth, superior putting surface.

And while the Verti-Cut® is improving putting surfaces, it's improving growing conditions for the turf. NO plant can

survive if dead and dying plant material is permitted to choke off the plant's air, water, and food supply. The VC-5 Verti-Cut® makes certain that these necessities reach the soil surface.

Make certain to "harvest" the dead material on your greens this fall. The life and health of your turf next spring depends upon it!

And complete the maintenance program by opening the soil with the Vertifier or the Aerifier®. Your turf will respond and produce the kind of turf that is good to play on and that resists drought and disease.

WRITE: West Point Products Corp., West Point, Pa. 19486

Mfrs. of Aerifiers®, Verti-Cuts® for greens, tees, and fairways; and the Vertifier, Power Drag, Aeri-Spiker for greens.

For more information circle number 227 on card

ANNOUNCING

NEW budget-priced ball washer!

**Combines
long life with
low maintenance**

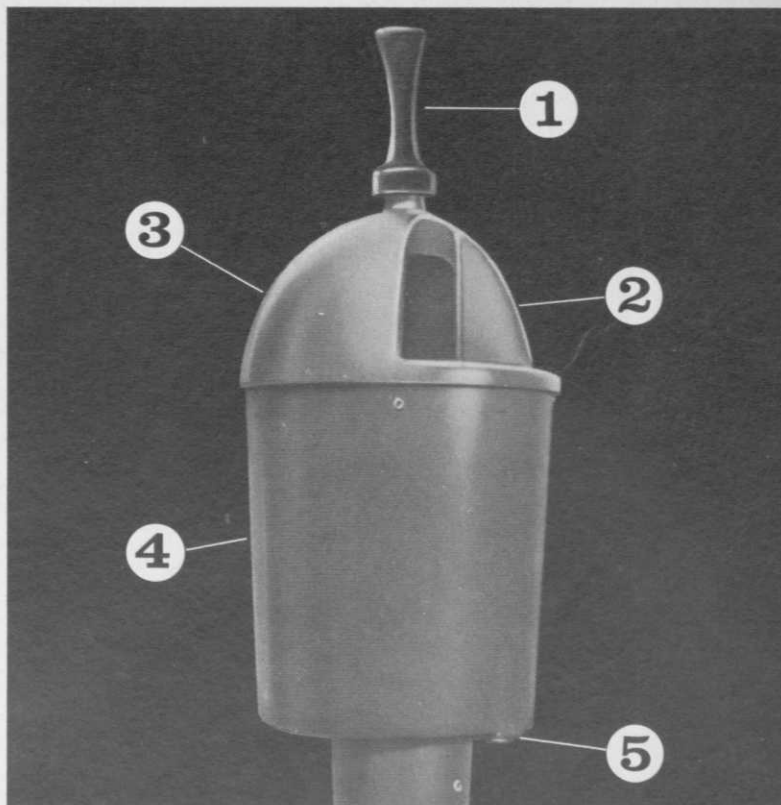
New Lewis aluminum-fiber-glass housing with stainless steel, rubber and nylon fittings assures rust-free dependability and trouble-free operation.

LEWIS LEADS AGAIN! You asked for a Ball Washer combining trim design with smooth operation and minimum maintenance . . . at a modest price. Lewis engineers achieved this with the remarkable new GF-68 Washer, combining aluminum and fiberglass. Its functional design and smooth, splash-free cleaning action pleases players from the first insertion of the ball to its final automatic transfer to the holding tray.

Greens Superintendents recognize these top quality features . . .

Lewis fine quality materials assure long life and easy maintenance:

(1) Tough phenolic grip holds solid stainless steel plunger shaft firmly, permits 360° swivel. (2) Oversize opening directs ball to nylon paddle for spin-action cleaning. Exclusive design automatically ejects ball into receiving "tray". (3) Cast aluminum top is designed for rough use. Easily removed to replace brushes after 3 to 5 years of normal use. (4) Molded fiberglass base forms large water chamber. Washer can't become rusted to post. (5) Outside drain plug for easy flushing.

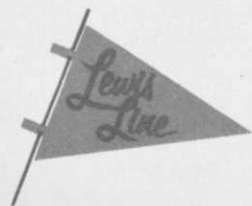


New Fluorescent Flagpole features high visibility . . . pinpoints cup on green from 100-150 yards out. Ken Voorhies, Columbine C.C., Denver, Colorado, shows vertical stance of pole with new chamfered ferrule and chamfered cup.



Lewis Deluxe GF-555 Tee Stations are used by Wade Flatt on all eighteen tees of his Skyline Country Club at Wichita Falls, Texas. He uses Lewis Line equipment exclusively because of its dependable service.

20-55



Lewis Line GOLF EQUIPMENT

Cup Cutter • Cups • Flags • Flagpoles • Tee Markers • Tee Stations • Ball Washers
Practice Markers • Cup Setters & Pullers • Rakes

CONTAINER DEVELOPMENT CORPORATION • 4110 Montgomery St. • Watertown, Wisconsin 53094

this blade is causing a revolution

The blade revolutionizing the golf courses of America from tee to green is 0217® Fylking Kentucky bluegrass (Patent Pending). A new, low-profile grass with unexcelled turf-forming qualities, 0217® Fylking doesn't produce unsightly seed heads. Mows smooth, thrives on close cutting. Greener, thicker—the most disease, weed, wear-resistant lawn yet (proven by 10 years of international testing—rated best obtainable by turf authorities). Join the revolution. See your seed distributor. For additional information or names of authorized distributors, write Jacklin Seed Co., Inc., Dishman, Wash. 99213.



FYLKING KENTUCKY
BLUEGRASS

For more information circle number 247 on card

A case for wetting agents

by Paul Turcotte

Superintendent,
LeJeune Municipal GC, Miami, Fla.

I've been superintendent at LeJeune for eight years, and have been using wetting agents for the last six. The main reason that I started using them (I've tried several, experiencing both burn and continued run-off) was because of water standing on several greens up to 24 hours during periods of heavy downpours. Even with aerification, we couldn't seem to get the water off. (And some days we averaged four inches of rain.) As a result, the greens were sloppy and unfit for play.

Now, within ½ to 1 hour we can put the players back on the green. During heavy showers, I've gone out and sprayed the wetting agent on the standing water to speed up water penetration and get the greens in playing shape.

Plain water just doesn't do the job here. And, this is not a private course where individual attention to watering problems can be handled by adapting course renovation and watering practices.

My job is to grow and hold grass that has terrific wear and tear and compaction due to constant play

365 days a year. Here are some of the values of using wetting agents that I've experienced at LeJeune.

1. We haven't syringed during the day since we started using the agents. We used to syringe a couple of times a day to keep the grass from wilting.

2. We haven't had to restore or sod our tees. Before, we couldn't seem to keep grass on the tees because of the compaction. Aerification was a help, but in winter, with the heavy play, we couldn't aerify when we wanted to. All work had to be done at night.

3. We water 50 per cent less. (We have manual heads on greens, fairways and tees and use less water and less labor.)

4. During the winter months, wear around the cups was very bad. We often changed our cups twice a day. With the wetting agents, the Bermuda is deeper rooted, has established itself and is now in a healthier growing condition during that time. (I've found Bermuda roots down two feet—no rooting problem. In the hottest weather, we notice no discoloration in replacement of cups—and cups are changed daily).

5. I now have very little wash-out in the traps.

Of course the immediate question that came to my mind before I started using the agent was just how much more it will raise my budget. The representative from the company that I now use said it not only wouldn't cost me more, but that it would reduce my expenses.

Continued on page 100

Some of the disadvantages

An argument is only valid when both sides of the story are told. GOLFDOM's columnist, Dr. James Beard, who believes not enough detailed research has been done on wetting agents, revealed these disadvantages about them.

1. Some can cause temporary greens burn.

2. Some people believe there is deterioration of soil as a result of continued use.

3. They are tools that can be used in a turf management program, but not as a regular practice such as every week. This is so because their main function is temporary alleviation. Thus, if you use them to correct something, you have to continue to use them as a corrective; your original problem will always remain. So, their best use is on temporary problems such as localized dry spots or on a thatch condition where its dried out and you can't get water to the spot.



GREAT GREENS ARE PAR FOR **AGRICO**

The professionalism with which Agrico approaches golf course turf problems is a big reason two out of three turfmen continue to select Agrico Country Club Fertilizers year after year. Agrico's custom-tailored program, exclusively for golf courses, plus full service and expert counsel every step of the way, can be of genuine value to you. See your AGRICO man today.

 **AGRICO[®] Country Club Fertilizers ...**
at the roots of the best turf in America!

For more information circle number 208 on card

If you're not using
CASORON®
 to kill weeds around



fairway sand traps...



fences...



cart paths...



water hazards...



ornamentals...



buildings...

you're using the
 wrong weed killer.

When you use CASORON you kill two birds with one stone. You kill all your hard-to-reach annual and perennial weeds around the course. And you free your labor to keep up your greens and fairways during the busy season. All it takes is one application. Get CASORON today or write us for complete information.



THOMPSON-HAYWARD CHEMICAL COMPANY
 P. O. Box 2383 Kansas City, Kansas 66110

For more information circle number 256 on card

Basic Equipment *Continued from page 64*

18-Hole Golf Course	9-Hole Golf Course	Par 3-18 Hole	Executive 18-Hole	Quantity	BASIC EQUIPMENT REQUIREMENTS FOR VARIOUS GOLF COURSES						
					Greens	Aprons and/or Slopes	Trees	Fairways	Roughs	Trimming-Trees, Trees, etc.	Misc.-Clubhouse, etc.

SHOP EQUIPMENT											
1	1	Reel Grinder w. Bedknife Grinder									
2	1	1	2	Lapping Machine							
Other shop equipment such as a Welder, Air Compressor, hand tools, spare parts, etc. are determined by individual requirements but should include necessary tools for repair of electrical equipment, gasoline engines, irrigation system, etc.											

				Primary Area Use								
18-Hole Golf Course	9-Hole Golf Course	Par 3-18 Hole	Executive 18-Hole	Quantity		Greens	Aprons and/or Slopes	Trees	Fairways	Roughs	Trimming—Troughs, Trees, etc.	Misc.—Clubhouse, etc.
BASIC EQUIPMENT REQUIREMENTS FOR VARIOUS GOLF COURSES												
MISCELLANEOUS HAND TOOLS, TRAP AND WATERING EQUIPMENT												
Axes, Picks, Rakes, Shovels, Tampers, tree tools, Spades, Wheelbarrows, ladders												
24" & 36" Rakes, 1 Hose and assorted portable Sprinklers for spot watering. Number and variety determined by individual need.												
TEE EQUIPMENT**												
108	54	108	108	Tee Marker	Number of Ball Washers, Waste Receptacles, Tee Towels, Markers and Direction Signs determined by individual need.							

**Consult Par Aid, Standard and Lewis Catalogs for complete list of Flags, Poles, Cups, Tee accessories and putting green supplies.

				Primary Area Use									
18-Hole Golf Course				Greens				Aprons and/or Slopes					
9-Hole Golf Course				Trees				Fairways					
Par 3-18-Hole				Roughs				Trimming-Troughs, Trees, etc.					
Executive 18-Hole				Misc.-Clubhouse, etc.									
Quantity	BASIC EQUIPMENT REQUIREMENTS FOR VARIOUS GOLF COURSES												
GREEN EQUIPMENT***													
24	12	24	24	Flag Poles (includes extras)									
1	1	1	1	Numbered Flags (2 Sets)									
21	11	21	21	Putting Cups, greens (includes extras)									
21	11	21	21	Putting Cups, practice green (3 extra)									
21	21	21	21	Practice Green Markers									
18	18	18	8	Ball Bruise Repairers									
2	2	2	2	Cup Extractors									
2	2	2	2	Cup Setters									
2	2	2	2	Cup Hole Cutters									

***—Consult Par Aid, Standard and Lewis Catalogs for complete list of Flags, Poles, Cups, Tee accessories and putting green supplies.