

What made more tour golfers play Titleist in '67 than the next 3 balls combined?

Extra distance

(P.S. How'd you do in '67
with your ball? This year,
play the #1 ball . . . the ball with
a little something extra.
Titleist.)

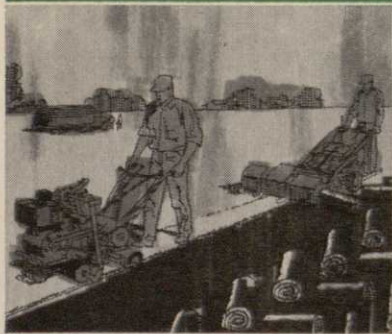


ACUSHNET GOLF BALLS
Sold thru golf course pro shops only

TOURNAMENT	OFFICIAL COUNT OF PLAYERS USING			
	THE TITLEIST	THE ---	THE -----	THE -----
San Diego Open	49	33	12	18
Bing Crosby	121	55	57	35
PGA Seniors	243	42	25	19
Los Angeles Open	45	36	12	19
Bob Hope Desert Classic	213	89	124	37
Phoenix Open	56	29	13	20
Tucson Open	69	25	9	22
Doral Open	44	32	12	22
Florida Citrus Open	43	30	13	18
Jacksonville Open	44	27	14	23
Pensacola Open	45	25	19	19
Greater Greensboro Open	36	31	20	22
Masters	23	17	15	11
Tournament of Champions	9	7	5	3
Azalea Open	80	31	13	10
Dallas Open	59	25	15	20
Texas Open	62	25	13	21
Houston Champions	33	22	12	17
Greater New Orleans Open	60	26	22	18
Colonial	25	16	10	10
Oklahoma City Open	76	21	11	19
Memphis Open	72	25	11	18
Buick Open	60	24	15	16
USGA Open Championship	63	22	15	22
NCAA Championship	153	33	33	7
Cleveland Open	55	25	20	22
Canadian Open	64	28	18	18
Indianapolis Open	64	21	15	22
PGA Championship	57	18	18	21
Minnesota Golf Classic	65	24	9	28
Western Open	61	22	18	26
American Golf Classic	42	22	19	15
Greater Hartford Open	58	26	15	21
Westchester Classic	56	28	19	27
Carling World Open	62	23	21	18
USGA Amateur Championship	100	15	23	7
Philadelphia Golf Classic	61	25	16	25
Thunderbird Classic	48	27	17	18
Atlanta Classic	67	28	16	19
Sahara Invitational	53	28	17	24
Hawaiian Open	80	21	15	15
US National Senior	218	41	126	9
Haig & Haig	79	23	12	17
Cajun Classic	75	23	7	22
TOTALS	3148	1216	941	840
<i>and remember, no one is paid to play Titleist</i>				



First choice in specialized power equipment to help you cut your turf care costs



RYAN SOD CUTTER followed by world's first mechanized sod rolling machine.



VIBRATORY ROLLAIRE applies up to $\frac{3}{4}$ ton pressure. Self-propelled.



MOTORAIRE CORING AERATOR completely aerates average home lawn in an hour.

RYAN EQUIPMENT above (left to right): Tractor-drawn **RENOVAIRE** for aerating large areas; **SPIKEAIRE** power disc spiker; **MATAWAY** power rake or vertical mower; **SPREAD-RITE** top-dresser, fertilizer spreader; and **GREENSAIRE** coring aerator.

With specialized RYAN power equipment you can plan a year-around turf maintenance program which will *decrease* your total turf care costs while giving you *better* turf.

Golf-course *proved*, golf course *approved*, RYAN equipment helps you to *grow grass mechanically* . . . by promoting *complete* utilization of air, water, fertilizer, and disease and pest control chemicals.

Mechanical aeration relieves compaction and stimulates healthy plant growth. Power raking or vertical mowing quickly removes thatch and pulverizes cores after aerating. Mechanical spreading, rolling and

sod cutting make fast, easy work of formerly back-breaking jobs.

Now in world-wide use, the RYAN line of equipment includes tools for most every specialized turf care job. The illustrations show some of the ways these rugged, powered tools can help you build and maintain greener, healthier turf.

First choice of knowledgeable golf course superintendents and other professional turf men, the RYAN line is *sure* to include one or more machines that will *surely* cut your costs.

More complete details are shown in our 24-page "Guide to Greener Grass". Please send for a free copy.



EQUIPMENT COMPANY

2055 White Bear Avenue / St. Paul, Minn. 55109

World-Wide Sales and Service by the Leading Turf Equipment Distributors

For more information circle number 205 on card

TIPS FROM A SUPERINTENDENT
#2 IN A SERIES

Progress report on the beautiful new Playboy Club-Hotel Course in Lake Geneva, Wisconsin

BY ART MUELLER,
Superintendent (formerly superintendent at
Tam O'Shanter Country Club, Niles, Ill.)



The official groundbreaking ceremony took place in August of 1966, complete with Hugh Hefner and his Bunnies. The grubbing and staking began in September. By October of 1967, one year later, we were turning green and getting in shape for our projected June, 1968, opening day. By this time we had moved perhaps a million yards of material.

The Club-Hotel complex includes 300 rooms, a variety of restaurants and bars (a la Playboy Club), two 18-hole golf courses (one designed by Jack Nicklaus and Pete Dye, the other by Robert Bruce Harris), two swimming pools (indoor and outdoor), stables, skiing, skeet and trapshooting and a landing strip for private aircraft. All in all, some 900 acres.

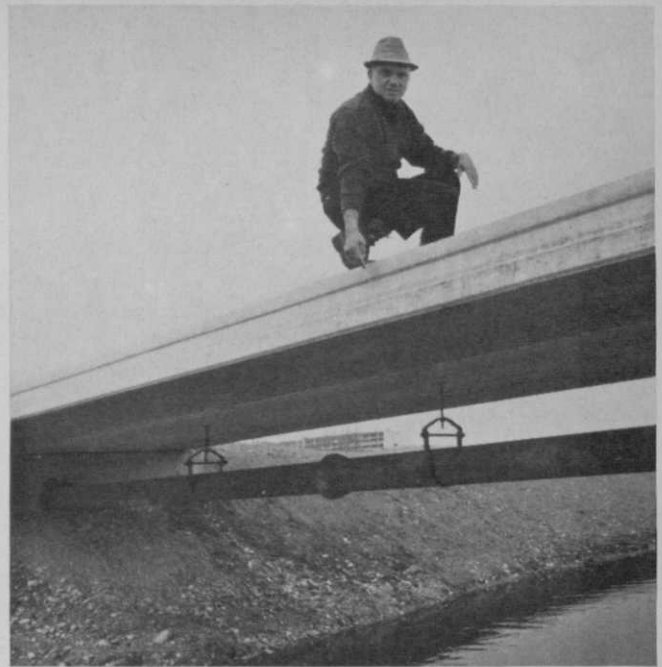
We have six ponds or lakes, including a 20-acre lake. These are stocked with trout and large-mouth bass. These lakes supply the water for our sprinkling system.

Because of the stony subsoil, we chose cast iron pipe for all our water mains. We felt that its strength, plus its ability to take the ground heaving during frost, made it a must for our courses.

The grasses we have are a combination. C15 Toronto for the greens, and what will be creeping bent on the fairways. Right now, we're using a combination of blue, fescue and bent until the ground is conditioned. For the roughs, we're using rye, fescue and blue, but by opening day, it will be mainly blue and fescue.

The countryside here at Lake Geneva is absolutely ideal for a golf course. Hilly, woody terrain with a small river, spring-fed lakes and a natural amphitheater at the eighteenth green. Our first course was designed to take advantage of the actual lay of the land.

This barn lies behind the 10th green, just off the 11th tee. Management may leave it up to retain rural flavor.



This 8-inch cast iron pipe main supplies all the water for the course. Extending from the pumphouse beyond the bridge, it connects to the 6- and 4-inch cast iron tributaries.

No gimmicks of any kind. This is definitely a championship course, and management plans national tournaments here. You'll be seeing a Playboy Open on network TV someday! Our second course will open in June, 1969.

I don't think there's any question that we'll be ready for opening day next June, as long as the weather holds as nicely as it has. One thing my friends ask me all the time: Will the caddies be Bunnies? All I can tell them is, come on up next June and find out for yourself!

This series is sponsored by the
Cast Iron Pipe Research Association

Cast iron pipe is preferred for the irrigation systems of golf courses throughout the country. Its superior strength, corrosion-resistance, quick-handling push-on joints and easy tapping, plus its recognized long life, have made it by far the smartest investment your club can make. For helpful tips on golf course irrigation, send for our free fact-filled 20-page booklet.



Nothing serves like
CAST IRON PIPE

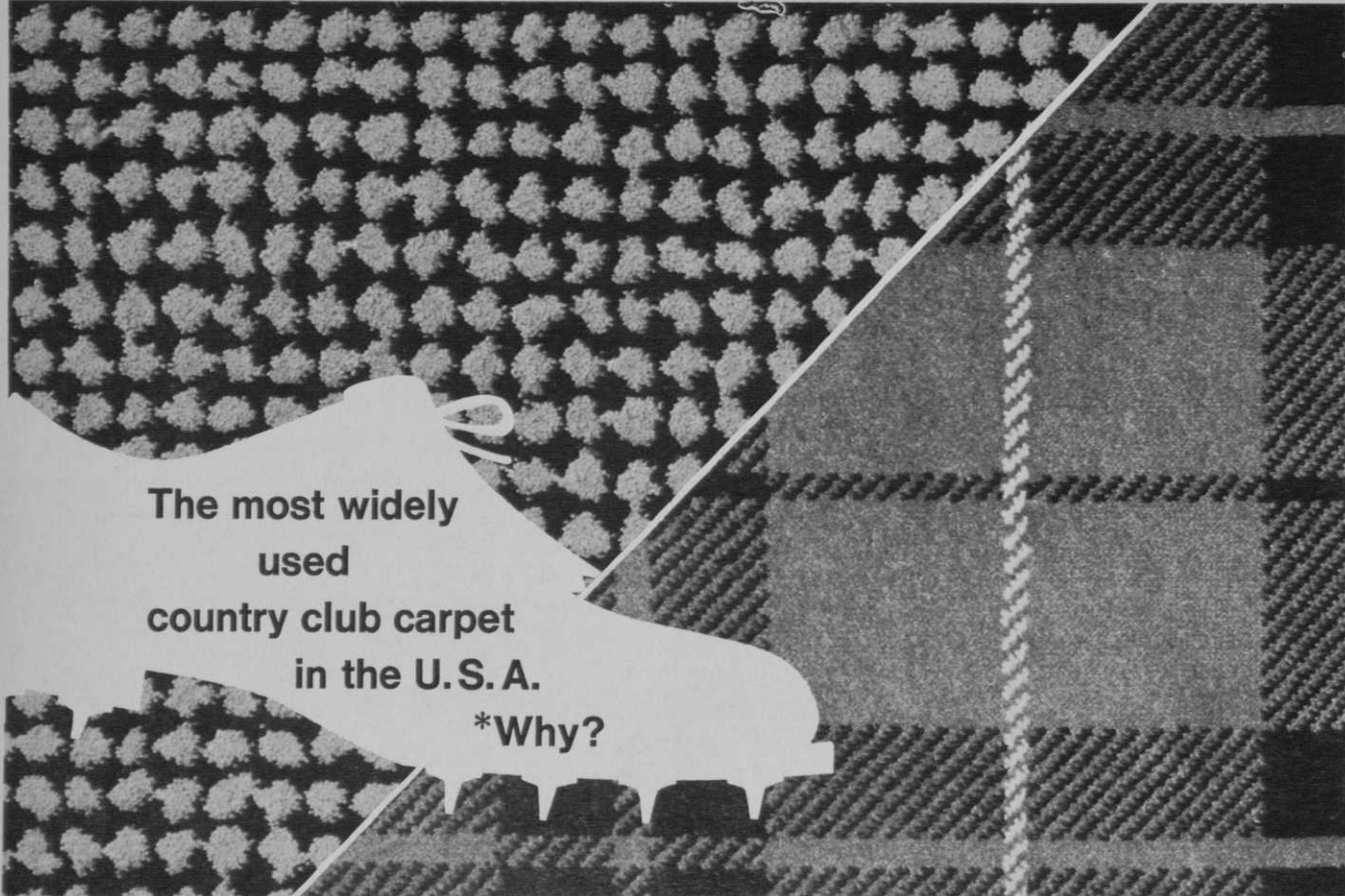


THE MARK OF PIPE THAT LASTS OVER 100 YEARS

CAST IRON PIPE RESEARCH ASSOCIATION, 3440 Prudential Plaza, Chicago, Ill. 60601

An association of quality producers dedicated to highest pipe standards through a program of continuing research

For more information circle number 132 on card



The most widely
used
country club carpet
in the U.S.A.

*Why?

PHILADELPHIA Quality #282 Spikeproof Carpeting

Woven to do a tough job—and this jacquard Wilton woven carpet has proven its mettle for as long as 16 years in actual installations. Offers more than beauty and luxury—prevents falls, reduces skidding so common on hard floors, greatly lowers noise volume. Maintenance is easy—usually only routine vacuuming is required.

Custom weaving service matched to any color submitted, in designs selected from the industry's largest country club collection.

For locker rooms, pro shops, 19th hole grilles, wherever spikes are worn.

*Let the clubs who use this carpet tell you why. For representative list, use coupon below.

Mail coupon for free carpet sample and brochure of installations

Philadelphia Carpet Co. / COMMERCIAL DIVISION
Allegheny Avenue and C Street, Philadelphia, Pa. 19134

Please send a free sample of #282 spikeproof carpet, and brochure. No obligation, of course.

NAME _____
CLUB _____
ADDRESS _____
CITY _____ STATE _____

In contract carpets, the choice is

PHILADELPHIA
Carpet Company

Quality since 1846 / Showrooms: Chicago, New York, Dallas, Los Angeles, San Francisco. Also Crawford & Thompson in Atlanta, High Point, St. Petersburg

ARNOLD E. ABRAMSON

Publisher

ROBERT J. ABRAMSON

Associate Publisher

JOE GRAFFIS, SR.

Associate Publisher

ROSS GOODNER

Editorial Director

HERB GRAFFIS

Executive Editor

DESMOND TOLHURST

Editor

PATTY KEATING

Assistant Editor

DICK MILLER

Assistant Editor

Editorial Consultants

HARRY OBITZ and DICK FARLEY

Merchandising

DR. MARVIN FERGUSON

Agronomy

FRANC ROGGERI

Executive Art Director

MARIUS N. TRINQUE

Art Director

RONALD R. STAFFIERI

Assoc. Art Director

PETER J. ABRAMSON

General Business Manager

DOROTHY M. SHEEHAN

Assistant To The Publisher

RON GUZIK

Circulation Manager

Administration And Promotion

DAVID SIMMONS

Production Director

SOL NUSSBAUM

Production Manager

RAYMOND TAYLOR

Production Assistant

CARLYLE J. KELLEY

Advertising Service Manager

Western Office

ARTHUR H. MORSE II

Vice President For Western Operations

DARRELL OLDHAM

680 Beach St. San Francisco, Cal. 94109

(415) 885-0570

ROBERT D. ANDERSON

Sales Manager

Eastern Advertising Office

ARTHUR MAY

VINCENT ATHERTON

CHARLES MEYER

235 East Forty-Fifth St., New York, N.Y. 10017

(212) 683-3000

Mid-West Advertising Office

ROBERT R. GLENN, Manager

JOE GRAFFIS, JR., TOURISSE GREENFIELD

RICHARD E. CAMPBELL

400 West Madison Street, Chicago, Ill. 60606

(312) 346-0906

Detroit Advertising Office

J. EDWARD VAN HORN, JR.

1617 Fisher Building Detroit, Mich. 48202

(313) 874-2494

Advertising Representatives

Florida & Caribbean

JOEL MELTZER

Suit 108, 924 Lincoln Road

Miami Beach, Fla. 33139

(305) 538-0436

Atlanta

DAVID SKOKE

3110 Maple Drive N. E.

Atlanta, Ga. 30305

(404) 233-5077

Canada

HARVEY GROTSKY

1255 University St., Suite 343

Montreal 2, Quebec, Canada

(514) 866-2251

GOLFDOM

INCORPORATING GOLF BUSINESS

VOL. 42 NO. 2

FEBRUARY 1968

TABLE OF CONTENTS

ARTICLES

- 36 The Aluminum Shaft Dilemma *by Roger Ganem*
46 Supers Declare War on Weevil
50 Flood Problems Down the Drain *by Frank Aaron*
56 The Education of a Pro
64 Space-age Training for *Your* Club *by G. V. "Jerry" Marlatt*

SPECIAL SECTION

- 25 1968 Golf Car Guide
26 No More Wear and Tear *by Tom Mascaro*
28 Get the Most Out of Car Batteries *by Lee R. Hill*
30 To Lease or Not to Lease *by John D. Patterson*
32 Keep Those Engines Purring *by E. L. Fisher*
45 The Need for Driver Safety *by Harold K. Howe*

VIEWPOINTS

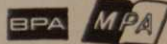
- 10 Swinging Around Golf *by Herb Graffis*
12 Grau's Answers to Turf Questions *by Fred V. Grau*
16 Accent on Management *by Ken Emerson*
18 Turfgrass Research Review *by Dr. James B. Beard*

DEPARTMENTS

- 81 People In the News
88 New Products
94 Coming Events
94 News of the Industry
95 Classified Advertising
96 Advertising Index

Cover: Sea Pines Plantation/William Hilton Inn, Hilton Head Island, S.C.

GOLFDOM, Incorporating GOLF BUSINESS, February, 1968. Published monthly January through October by Universal Publishing and Distributing Corp. at New York, N.Y. Executive Offices: 235 East Forty-fifth Street, New York, N.Y. 10017 Volume 42, No. 2, Arnold E. Abramson, President; Robert J. Abramson, Executive Vice President; Frank Roggeri, Senior Vice President; Morton Waters, Vice President; David Rowan, Senior Vice President; A. H. Morse II, Vice President; Peter J. Abramson, Vice President; George Bauer, Vice President; John Fry, Vice President; Dorothy M. Sheehan, Secretary; Edwin J. Harragan, Assistant Secretary; Shirley Collins, Assistant Treasurer. Copyright © 1968 Universal Publishing and Distributing Corporation. Published simultaneously in Canada. Copyright under International, Universal and Pan-American Copyright Conventions. All rights reserved, including right of reproduction, in whole or in part, in any form. Printed in the U.S.A. For advertising rates, apply to Advertising Manager. Controlled Circulation postage paid at Canton, Ohio. Please send change of address notice to GOLFDOM Magazine, Service Department, P.O. Box 513, Des Moines, Iowa, 50302. The Company also publishes: Golf, The Family Handyman, Ski, Ski Business, Ski Area Management, Vocational Guidance Manuals, Universal Home Plan Books, Nova Books and Award Books. Members of Business Publication Audits, Magazines Publishers Association, and National Golf Foundation. Subscription rates Domestic \$3.00, foreign, \$4.00 per year.







Ford operators are the most.

More operators are familiar with Ford than with any other make. That's because there are more Fords around golf courses than any other. Operators like Fords because Ford builds in features which make the operator's job faster and easier. ■ Take Ford's choice of transmissions for example. With 10-speed powershift, the operator shifts gears on-the-go without clutching or stopping. Or dual-range 8-speed which gives the operator a choice of mowing speeds to help him groom fairways and roughs in the least time. ■ Then add the Ford LCG (low-center-of-gravity) tractor for power favored by operators everywhere. This is the outfit that saves time on the level, and takes hills and slopes in stride. ■ If you want to pamper your operator, specify power-assist steering. To pamper your turf, specify flotation tires, front and rear. To pamper your pocketbook, see your Ford Tractor Dealer. ■ Ford Tractor, 2500 East Maple Road, Birmingham, Michigan 48012.



Gino Paoli
is for golfers who still dress
for golf.



Golfing without Gino Paoli is like playing tennis in purple shorts. Unthinkable. Gino Paoli designs golf clothes exclusively for golf.

For both men and women.

They've even color-coordinated accessories with their golf clothes.

So you can have freedom of movement and a free hand with style.

Ask for Gino Paoli wherever authentic golf clothes are sold.

Gino Paoli, Active Sportswear Division, 1407 Broadway, New York, N.Y. 10018.



Gino Paoli color-coordinates you from your hat to your shoes.
For more information circle number 181 on card

Swinging around golf

by Herb Graffis



This year, for the first time, all voting members of the PGA will receive a report from the association's treasurer and its finance committee . . . Treasurer Warren Orlick and the committee have made PGA history in telling PGA members what is done with the money . . . It's coming up to the business-like performance of the USGA in this respect . . . Why the PGA financial statement never was open information before never has been learned.

Parma, O., in suburban Cleveland, buying Ridgewood CC . . . Hidden Valley CC (Pittsburgh dist.) extensively remodeling to plans of Joe Lee . . . Carl Andree is superintendent . . . Groton, Conn., acquiring Shennecossett, famed old resort course, from Milton O. Slosburg . . . Purchase price of 129-acre course and building; \$900,000 . . . H.C. Googe now pro-manager, Prentiss (Miss.) CC . . . Wiltz J. Bernard now pro at Perry (Ga.) CC . . . He succeeds Ronnie Runions who moved to pro post at Jasper, Fla . . . Bernard was assistant to Ed Causey at Robbins AF Base course.

PGA sections are finding their business is growing too big, important and demanding to be handled as a sideline . . . Jack Horner becomes Carolinas PGA executive director after 23 years as sports editor of Durham (N.C.) Morning Herald . . . Gordon Watson who retired after many years as pro at Brynwood CC, Milwaukee, and Wisconsin PGA official now is executive director, Wisconsin GA . . . Watson's successor at Brynwood is Carl Unis who was assistant to Bobby Brue at Ozaukee CC in suburban Milwaukee.

PGA senior ladies auxiliary program this winter will miss the lovely Mrs. George Ferrier, one of its most active members almost since the group organized and who served as official . . . Chris Ferrier died suddenly, two days after she and her husband had returned to their Danbury, Conn., home from the Ryder Cup matches . . . Another charming woman who was at many of the PGA senior ladies affairs since they began, Mrs. Tom Crane, wife of the former executive director of the PGA, died in their home at Dunedin, Fla., just before the PGA annual meeting.

Some new clubhouses in smaller cities and towns are getting very fancy modern features, for instance at Chickasha (Okla.) CC there is a sauna bath . . . That's reputed to be one of the best treatments for a hangover, next to sniffs from an oxygen tank . . . Bob Hamrich, pro at Champaign (Ill.) CC for past nine years and Illinois Section PGA vice president, resigns and goes as pro to Mayfield CC, Cleveland, O., April 1 . . . Hamrich made a stand-out record for promotion of play and club spirit and excellent scoring of his members.

Continued on page 86