



Keep on-the-go in tight spots with Ford 120. No stopping—no clutching!

Tight spots are "go" spots with Ford 120 tractor. Ford gives you instant maneuverability, without stopping, without clutching. Saves you time. Cuts your job costs. Just move a lever forward up to 6.75 mph, reverse to as much as 3 mph at the speeds you want. 12 hp engine keeps right on running at constant speed. Power-driven equipment stays at peak capacity. Ford attachments save you time year-round. Snow blower. Dozer blade. Gang reel mowers for 5 through 8 foot swaths. 36, 42, and 48 inch rotary mowers. ■ See Ford 120 tractor soon at your Ford tractor dealer. He's in the Yellow Pages. Ford Tractor Division, 2500 East Maple Road, Birmingham, Michigan 48012.



For more information circle number 138 on card

PEOPLE IN THE NEWS

Donald M. Temple, 60 Riverside Dr., N.Y., N.Y., has formed his own national sportswear organization.

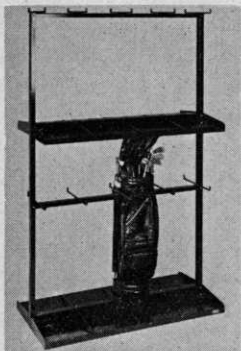
William R. Dean, division vice president, has been promoted to head the premium and military sales division of American Machine & Foundry Co.



TEMPLE



DEAN



INCREASE EARNINGS, SERVICE & SPACE WITH NEW VERTICAL BAG RACKS

Your members will like the extra convenience and care. Your pro shop profits from 40% more space these racks make available. Double unit shown holds 16 bags, size 2' x 4' x 6'-3" high, gives 12" x 12" space for bags. Single unit holds 8, size 1' x 4' x 6'-3" high. Sturdy steel. Bags set solid on tapered shelves.

- Wear and tear of golf bags is completely eliminated
- Provides a neat appearance
- Damp bags dry faster—no mildew
- Faster, easier storage
- Easy to install and add more as needed

Patented • SEND FOR FOLDER

THE A. G. STAFFORD CO.

For more information circle number 197 on card

2000 Allen Ave. S. E.
Box 287 • Canton, Ohio
A. C. 216 453-8431

CUSTOM STONE PICKING



CONTACT
WILLIAM BERGMAN, JR.
1335 M-15, Reese, Michigan
Phone VO 8-9812 (AC 517)

For over 20 years, Wm. Bergman has been clearing farm fields of stones from coast to coast. He uses equipment that was designed by him and his father. Bergman can guarantee 95 % effectiveness in clearing your fields of 3/4" to 10" stones. Let the Bergmans prepare your fields for you.

For more information circle number 232 on card



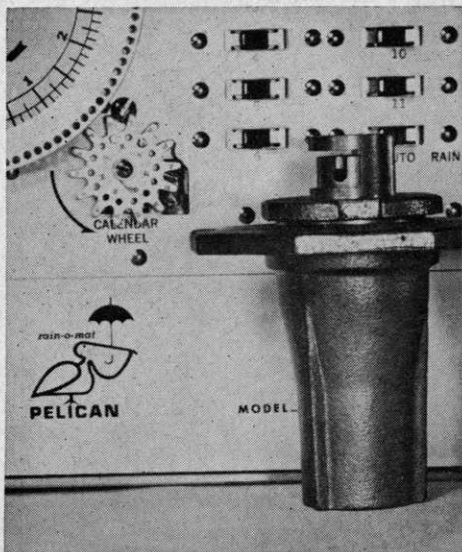
join the crowd

Nine out of ten of the nation's leading golf courses are using Buckner Sprinklers. Why? Because they know about the money, water and labor savings that are possible with a Buckner irrigation system. Buckner systems are designed for heavy duty, long lasting, low cost, low maintenance operation. Our sprinklers are engineered to provide the best effective coverage and penetration of water even in the tightest soil. Whether you use one of our underground or portable systems, you can be sure of eliminating parched areas and water waste. And our new 11 station 611-E automatic controller cuts scheduling to a simple, one-time 5 minute operation. For more facts you should know about the world's leading sprinkler systems, write for free catalog and name of nearest dealer.

Buckner INDUSTRIES, INC.

P.O. BOX 232, FRESNO, CALIFORNIA 93708

For more information circle number 132 on card



THINK rain-o-mat PELICAN
AUTOMATICALLY
rain-o-mat sprinklers, inc.
p o box 2166 Whittier, Calif.

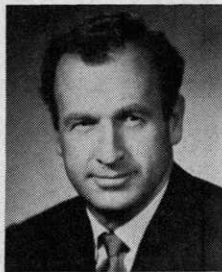
For more information circle number 186 on card

PEOPLE IN THE NEWS

David L. Hill has been promoted to general marketing manager of Bolens Division, FMC Corporation, Port Washington, Wisconsin.



HILL



LAFFERTY

R. F. Lafferty has been appointed president of consumer products div of Brunswick Corp. He will be responsible for the sale of MacGregor, Union Hardware, Zebco and Red Head sporting goods products.

NEW GRIP-GARD SLEEVE



Jackson Bradley, Managing Director of River Plantation Golf and Country Club, Conroe, Texas is widely recognized for his method of the structure of golf clubs and procedures for their mechanical knowledge repair.

*Patent Pending

Ferrule for golf club grips

Recommended by JACKSON BRADLEY

**PUTS A "FACTORY LOOK"
INSTANTLY ON A REPLACED GRIP**

Anyone can install in seconds—no skill or experience required. The **only** ferrule that stretches **intact** over the **large** end of a bare shaft and returns to shape.

Made of good-looking, thoroughly baked black vinyl, the Grip-Gard Sleeve* removes forever the problem of wrinkled tapes and jagged ends when replacing golf club grips. Its taper is specially designed to fit the shaft and grip of **any** iron or wood. No glue required.

Inexpensive to buy, easy to install—builds customer good will. Grip-Gard Sleeves have been used on thousands of repaired golf club grips by some of the largest golf repair shops in the country.



PLASTI-GARD CO. 3915 Tharp Street • Houston 3, Texas

A Division of WATCO

For more information circle number 213 on card

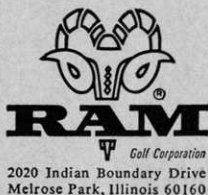
we figured out all the angles, then we made the *Golden Ram*

There's a bagful of stroke-saving angles built into the Golden Ram. For example, irons have "Sole-Support"—an extra-wide flange that puts head-weight at the very bottom of the blade to let you get under and through the ball smoothly (a Golden Ram 5-iron looks similar to the 9 in your bag). This flange has a contour roll front-to-back and side-to-side—less metal to meet turf for cleaner shots, smaller divots. Golden Ram woods are sole-contoured like the irons for improved fairway play; double cycolac face inserts eliminate exposed screws, give solid smack at impact. XPD-100 shafts

are fully flexed with 14 steps on the driver. Golden Rams are custom-made to meet your exacting specifications. But, if your customer has an average build, Golden Ram in standard shaft length is available from stock in your choice of two swingweights—all the playing features at substantially less cost.

YOUR SECRET WEAPON THIS SEASON

Ram golf balls with the Nylon XPD center. A great breed of ball in 95 and 85 compression. Test drive one.



For more information circle number 121 on card

TORONTO



C-15 BENT SOD & STOLONS

"PURE TO STRAIN"
GROWN ON STERILIZED SOIL TO IN-
SURE FREEDOM FROM POA ANNUA
AND OTHER FOREIGN GRASSES.

PENNCROSS BENT SOD



H & E Sod Nursery, Inc.
4301 W. Flossmoor Rd.
Tinley Park, Ill. 60430
312 798-2210

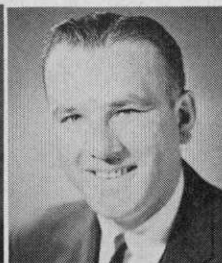
For more information circle number 189 on card

PEOPLE IN THE NEWS

Richard G. Smith has been promoted to assistant advertising and sales promotion manager at A. G. Spalding & Bros.



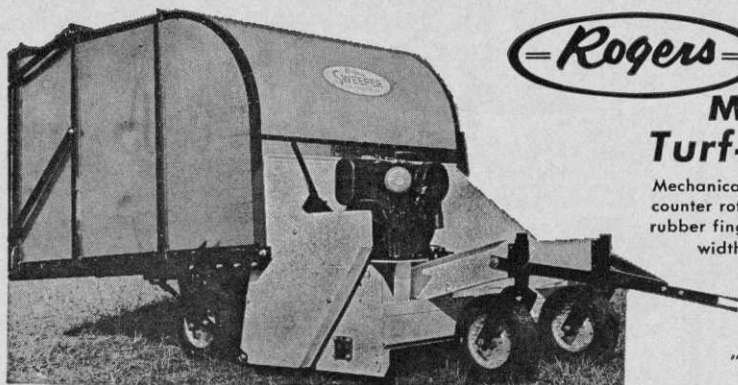
SMITH



EKERN

Robert Ekern has been named sales manager for the new San Leandro, California branch of Cushman Motors.

Roger J. Casl has been appointed advertising manager for Victor Golf Co., Morton Grove, Ill.



Model 720E Turf-Sweeper

Mechanical pick-up: two reels counter rotating—interlocking rubber fingers. 60 inch sweeping width—12 h.p. self-powered univ. hitch.

"One Man Operated"

Turf Sweepers

- Gathers—wet or dry—grass clippings, leaves, rocks, bottles, papers, dead branches, cans and other unsightly debris.
- Sweeping action of high modulus rubber fingers brushes turf clean... without damage!

Aerator

- Designed to aerate deep and clean under any ground conditions • Relieves compaction
- Renovates and removes Thatch • Prepares Seedbed • Smooths rough areas • Drains low areas • Vertical Slicing and Thinning

ROGERS MANUFACTURING CO., INC.

220 No. Mahaffie St. • Olathe, Kansas 66061
PHONE: 913-764-1615 or 913-782-0831

For more information circle number 167 on card



"I never worry about an installation when we use Certain-teed Asbestos-Cement Pipe!"

Lee Freeman is a construction superintendent who specializes in golf course irrigation systems, and has used various kinds of pipe in courses throughout the country and in the Caribbean. "Certain-teed pipe is easy to work with and absolutely dependable. I've used it in the Catskills, in 35-below-zero weather, and in the Deep South, with 100 degree heat. Under all conditions, including swamps, rocks and clay, Certain-teed pipe outperforms any other kind."

Write for new film on golf course irrigation. Full color movie shows how modern courses "beat the drought." "Advice from turf and sports authorities; details of installation. Film title: **THE GRASS IS ALWAYS GREENER.**"

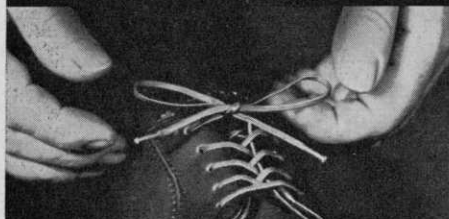
Address Certain-teed Products Corporation, Pipe Division, 25 Skippack Pike, Ambler, Pennsylvania 19002.



For more information circle number 105 on card

Cordo-Hyde®

Shoe Laces Par Excellence



Cordo-Hyde Shoe Laces stand up to shock and chafe — round after round after round. Stay tied, too! Your golf distributor carries them. Shoe lace profits score aces with Cordo-Hyde Laces.



United Shoe Machinery

BOSTON, MASSACHUSETTS

For more information circle number 223 on card

A B C TEE

Now Available!

3 TYPES OF AUTOMATIC TEES

All can be purchased with Nylon type brush mats, and all can be converted to coin operation.

3 TYPES OF BALL DISPENSERS

Capacity: 4,000 to 6,000 balls.

Can dispense by 25¢; 50¢ or 75¢ from 10 to 50 balls.

All machines have been field tested, some for over 10 years, in Europe, Australia & the U.S.

A B C TEE COMPANY

Box 720, Waterloo, Iowa

Write for demonstration and prices.

For more information circle number 178 on card

PEOPLE IN THE NEWS



FLORIAN

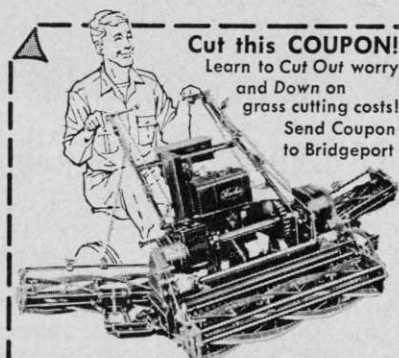


FERRETTI

Al Florian, "Strictly Golf" Manufacturing Co., Chicago, Illinois, will handle the sale and distribution of golf range equipment and miniature golf equipment.

The Skinner Irrigation Company, Troy, Ohio, announces the formation of Ferson Corp. to cover the New England area headed by A. N. Ferretti.

R. O. "Bob" Woltring has been named product sales manager of Product Engineering Co., 4707 S.E. 17th Ave., Portland, Ore. He will be responsible for golf carts and accessories.



Send me **FREE Literature** on **Locke REEL MOWER**

... and also on Devere-Locke rotary and Manco-Locke highwheel mowers. I'd like the name of closest dealer too.

(name)

(street)

(city)

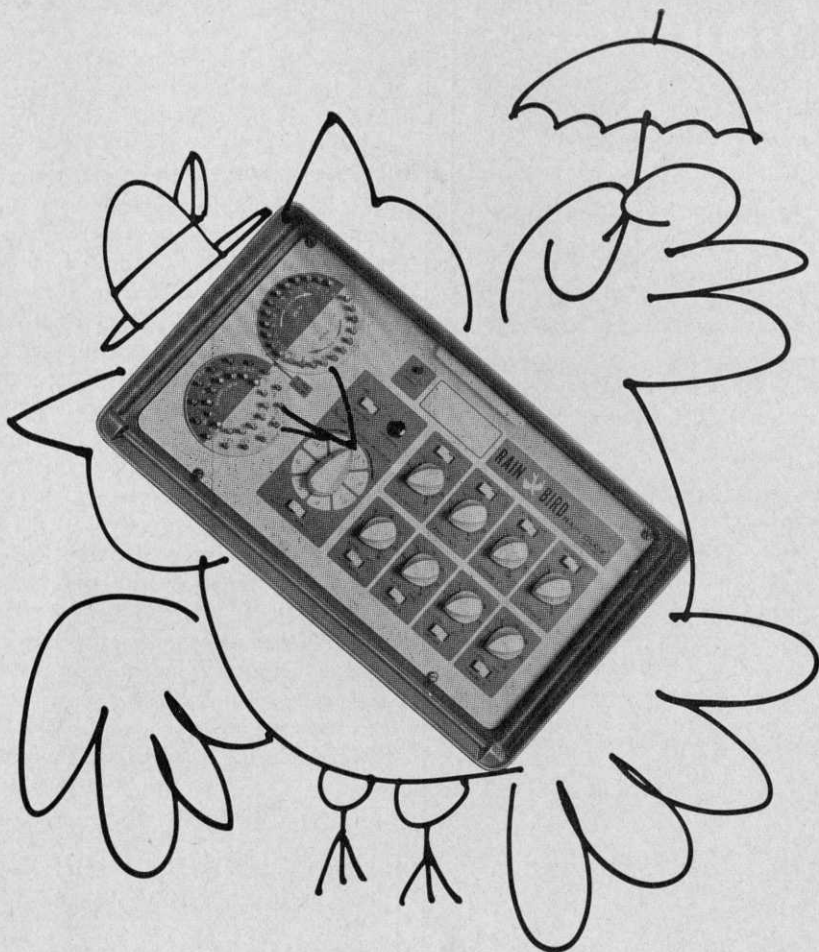
(state)

(ZIP)



Manufacturing Cos., Inc. 1020-L Conn. Ave. Bridgeport, Conn.

For more information circle number 202 on card



THE RAIN BIRD BRAINBIRD

Rain Bird makes many more products for sprinkler systems than the familiar heads, you know.

Like our new RC-8 Rain-Clox electronic controller—the brain that tells the Birds when to water. Reliability is one of its most important features.

Here are more: Dual program—6 lawn stations, 2 shrub. 14-day cycle. Any station can be eliminated from a cycle before the regular day is due and you can water any individual station out of the

cycle the same way. Two mountings: wall or pedestal.

This bird saves labor costs—and landscaping, because the amount of watering is not controlled by unskilled labor. And the Rain Clox is smartly styled—winner of industrial design awards.

Your Rain Bird distributor has more information.

Or write us: Rain Bird, Glendora, California 91740 (in the West); or Rainy Sprinkler Sales, Division L.R. Nelson Manufacturing Company

Inc., West Pioneer Parkway, Peoria, Illinois (in the East and Midwest).



For more information circle number 127 on card



HORNUNG'S
PRO GOLF SALES, INC.
FOND DU LAC, WISCONSIN

**SERVICE
TO THE GOLF PROFESSIONAL**

Write for 1967 Catalog
Over 800 Items

For more information circle number 165 on card

GEOFFREY S. CORNISH

**Golf
Course
Architect**

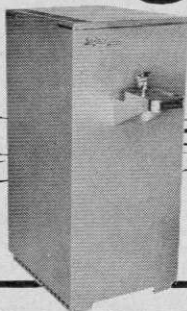
Fiddler's Green Amherst, Mass. 01002
Phone: 413-253-3913

Member
American Society of Golf Course Architects

For more information circle number 211 on card

NEW Safari

**DRINKING
EQUIPMENT**



Safari has a
better way...out
on the course!

Safari Gas-fired Drinking Fountains operate for less than 7½¢ a day. Gives on the spot refreshing water wherever desired.

Safari Gas-fired Water Cooler (self contained) has 12 gallon stainless steel reservoir...refrigeration unit fuel supply inside locked cabinet.

Safari Electric Drinking Fountains use absorption refrigeration unit. No moving parts. No motor to burn out. Operates on low voltage electric element.

Safari Sanitary Iced Drinking Fountains...new Hi-Capacity Heat transfer system. Saves up to 50% on ice and maintenance.

Write for more and detailed information...

SAFARI DEPT. GD

591 N.E. 5th Street, Pompano Beach, Florida 33060
Phone (305) 942-8076

For more information circle number 152 on card

GRAU'S ANSWERS

continued from page 20

sports needs cultivation to break the crust, to let air circulate and to let seed reach the soil.

Fertilizing — To do justice to this subject would be to write a book. Essentially there are three regimes or programs:

1) The hand-to-mouth inorganic program which builds no reserve and demands frequent light applications to avoid damage and to simulate steady feeding;

2) The natural organic concept which, in cool weather, needs to be supplemented with quick-acting materials since bacteria which decompose these organics are sluggish in cool weather;

3) The ureaform program which builds maximum reserves and carryover which starts grass strongly and naturally in spring thus eliminating decisions such as, "Shall I fertilize early and push the Poa or wait 'til the Poa has seeded?"

In actual practice many superintendents develop a combination program using the best features of all three regimes, tailored to their needs.

When buying a fertilizer mixture do

continued on page 102

**GOLF COURSE DESIGN
AND CONSTRUCTION**

EDMUND B. AULT Ltd.

GOLF COURSE ARCHITECT

Sculptured Greens

7979 Old Georgetown Road
Bethesda, Maryland 20014
301-942-0716

For more information circle number 149 on card

**ROBERT MUIR GRAVES
GOLF COURSE ARCHITECT**

LANDSCAPE ARCHITECT • SITE PLANNER
LAFAYETTE, CALIFORNIA

For more information circle number 184 on card